

1250

Missouri
Street

SUITE 102

San Francisco

~~\$2.95/SF/Month~~

NEW LEASE RATE

\$2.75/SF/Month

EXCLUSIVE AGENT:

JACK SILVA, SVP

Investment Consultant

415.308.2966

jack.silva@compass.com

DRE LIC: #00863003

COMPASS
commercial

RATE REDUCED

FOR LEASE | CREATIVE DESIGN LOFT



1250

Missouri Street

Property Detail

BUILDING DETAILS	Office
PROPERTY TYPE	Office/Retail/Flex/ Distribution/R&D
TENANCY	Single
RSF.	1,000
RATE (per SF)	\$2.95/SF/MO Now \$2.75/SF/MO
LEASE TYPE	Modified Gross
MONTHLY RENT	\$2,950 Now \$2,750 / MO
CLASS	A
PARKING	1 Car
ZONING	PDR-2

DESCRIPTION

Compass Commercial is pleased to present the opportunity to lease a Creative Design Loft Space located at 1250 Missouri #102. This creatively designed Commercial Condominium Loft Space offers 1,000 square feet on two levels. The space features direct street access as well as interior access doors on both the main and loft levels. The main level has a visually open floor plan, with built-in cubicles and a bathroom. The second level of the loft features a private conference room (including conference table), kitchen-break room, and remodeled bathroom.

LOCATION DESCRIPTION

Located in San Francisco's Potrero Hill neighborhood, and nearby the Dogpatch. 1250 Missouri St has convenient access to both highways 101 and 280, making it easily accessible to downtown San Francisco , Silicon Valley and the East Bay.



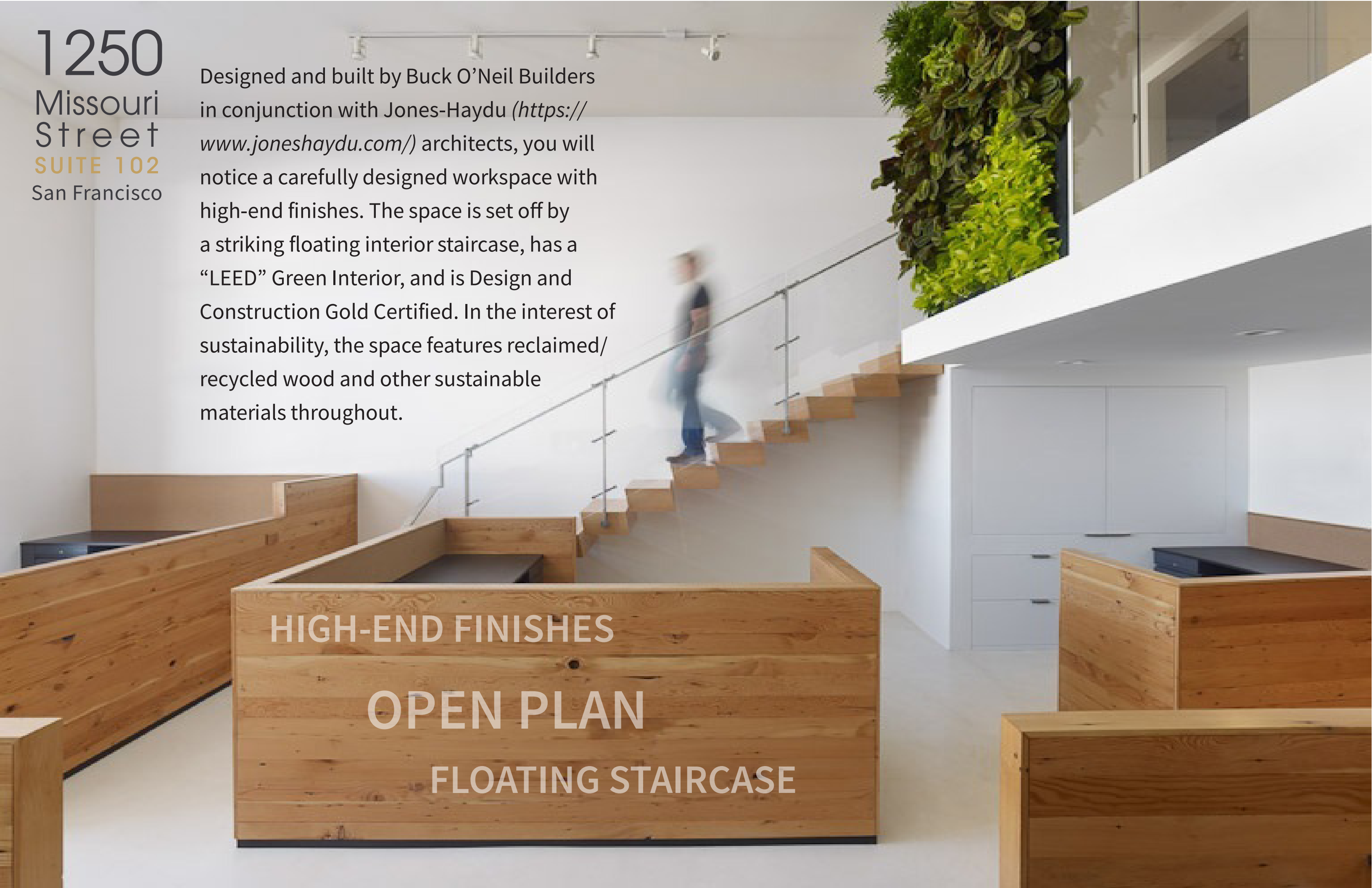
1250
Missouri
Street
SUITE 102
San Francisco

Designed and built by Buck O'Neil Builders in conjunction with Jones-Haydu (<https://www.joneshaydu.com/>) architects, you will notice a carefully designed workspace with high-end finishes. The space is set off by a striking floating interior staircase, has a "LEED" Green Interior, and is Design and Construction Gold Certified. In the interest of sustainability, the space features reclaimed/recycled wood and other sustainable materials throughout.

HIGH-END FINISHES

OPEN PLAN

FLOATING STAIRCASE





1250
Missouri
Street
SUITE 102
San Francisco



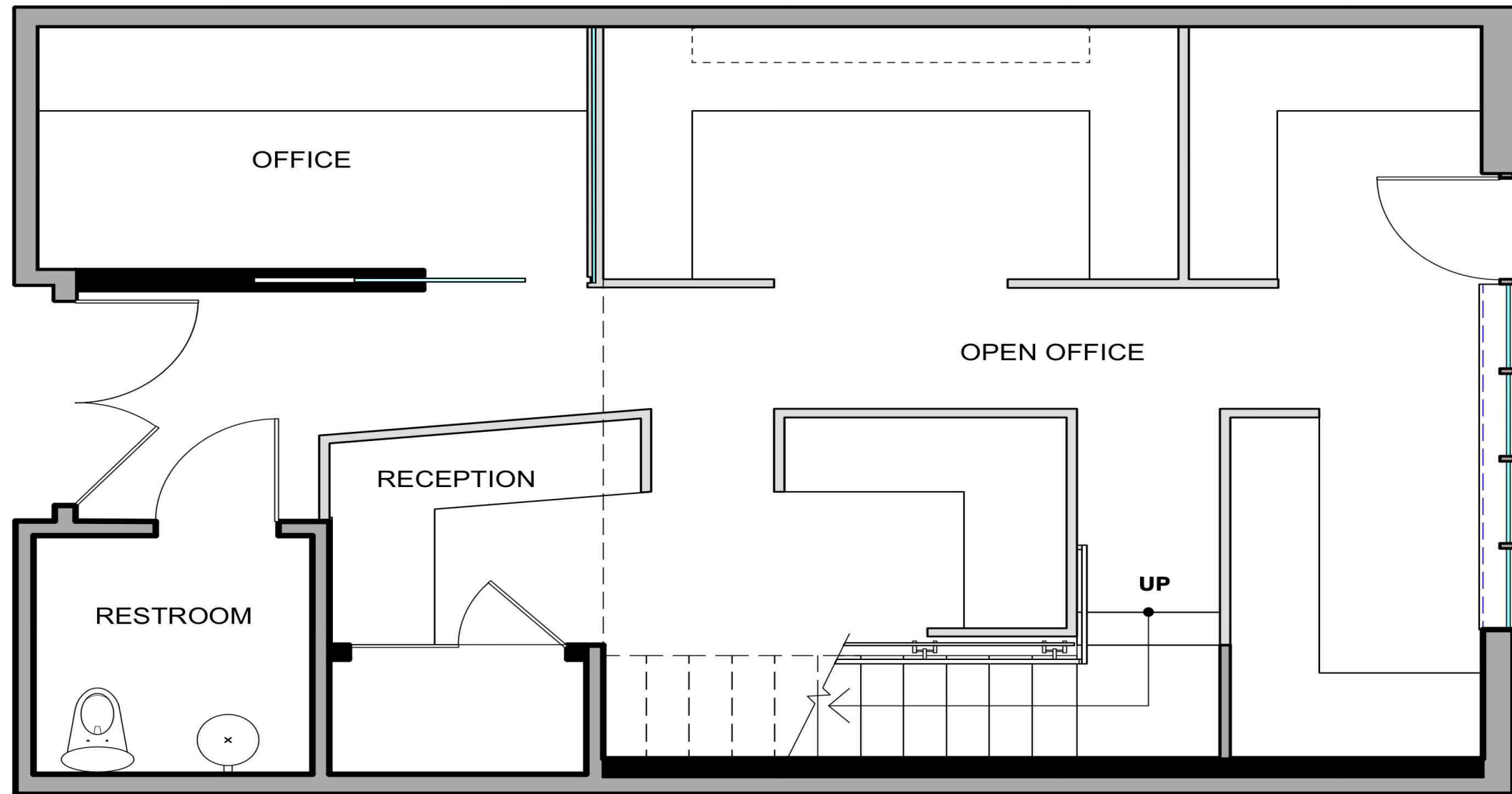


1250
Missouri
Street
SUITE 102
San Francisco

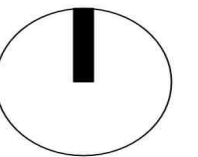


1250
Missouri
Street
SUITE 102
San Francisco

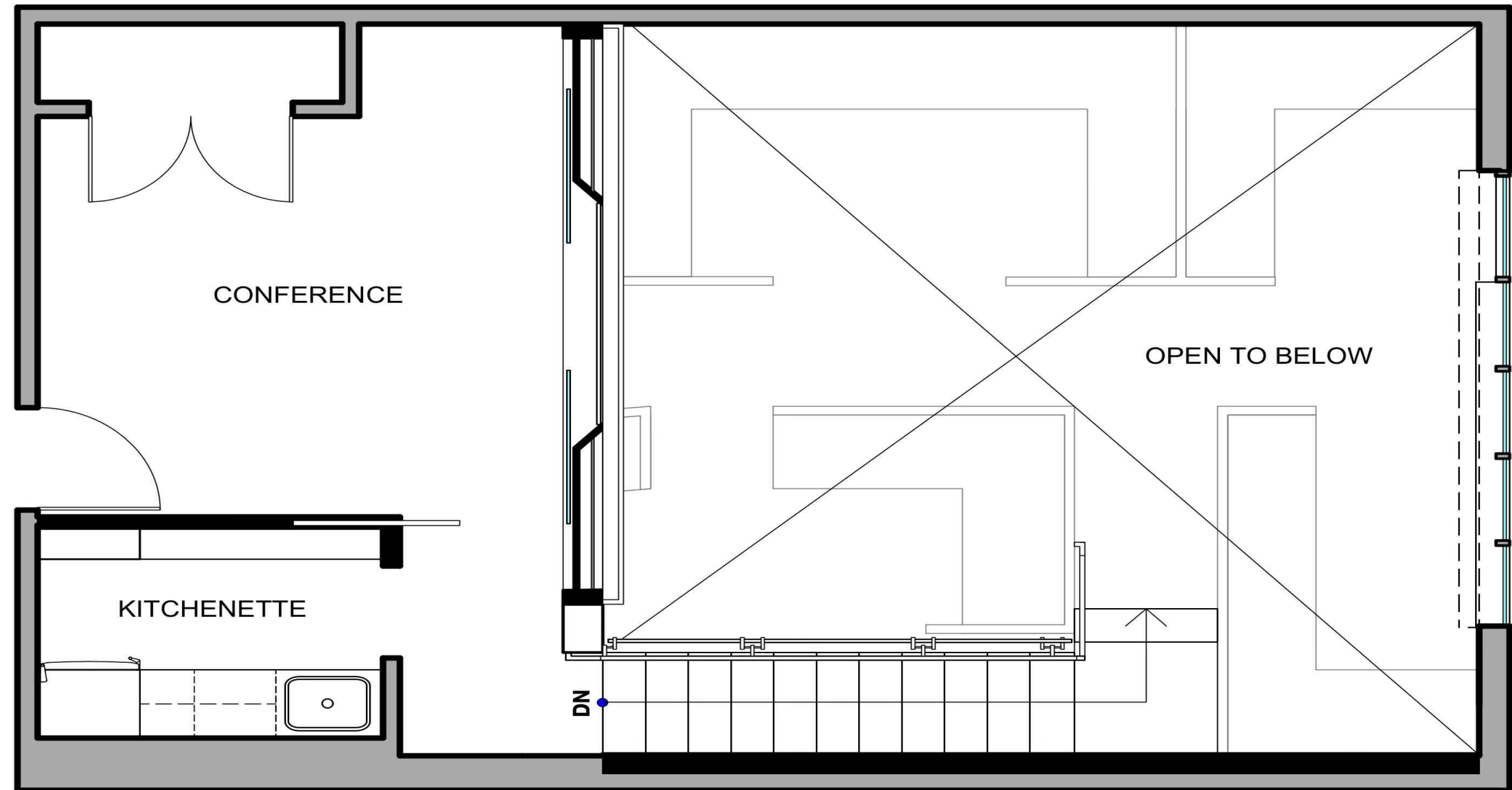
FLOOR PLAN - Lower Level



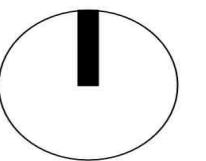
LEVEL ONE (LOWER LEVEL)



FLOOR PLAN - Mezzanine



LEVEL TWO (MEZZANINE LEVEL)



1250

Missouri
Street

SUITE 102

San Francisco

AERIAL VIEW

*Located in San Francisco's Potrero Hill neighborhood,
and nearby Dogpatch.*



AERIAL MAP

MISSION

SAN FRANCISCO

1250

Missouri
Street

SUITE 102

San Francisco

DOGPATCH

POTRERO HILL

CESAR CHAVEZ ST

1250 Missouri St



1250
Missouri
Street
SUITE 102
San Francisco

COMPASS

INVESTMENT ADVISOR

DO NOT DISTURB TENANT
Showings by appointment only.



Jack Silva, SVP

Investment Consultant

415.308.2966

jack.silva@compass.com

DRE LIC: #00863003

Disclaimer

Compass is a real estate broker licensed by the State of California and all Opportunity laws. License Number 01527235. All material presented for informational purposes only and is compiled from sources deemed reliable. Changes in price, condition, sale or withdrawal may be made without notice. Compass is not responsible for the accuracy of any description. All measurements and square footages are approximate.

724 Battery Street, San Francisco, CA 94111

COMPASS
commercial