



# 1912 LIBERTY ROAD

ELDERSBURG, MARYLAND 21784

FOR  
LEASE



**MACKENZIE**

COMMERCIAL REAL ESTATE SERVICES, LLC

# PROPERTY OVERVIEW

## HIGHLIGHTS:

- Consisting of three buildings with a combination of retail and offices spaces
- Abundant parking provided
- Located on Liberty Road in the heart of Eldersburg with great exposure and high daily traffic counts
- Close to many amenities
- Attractive rental rate



AVAILABLE:

**BUILDING 1:  
SUITE 17 (2ND FLOOR) - 960 SF**

PARKING:

**7.27/1,000 SF**

RENTAL RATE:

**BUILDING 1:  
SUITE 17 - \$16.00 SF, MG**



GOOGLE STREET VIEW

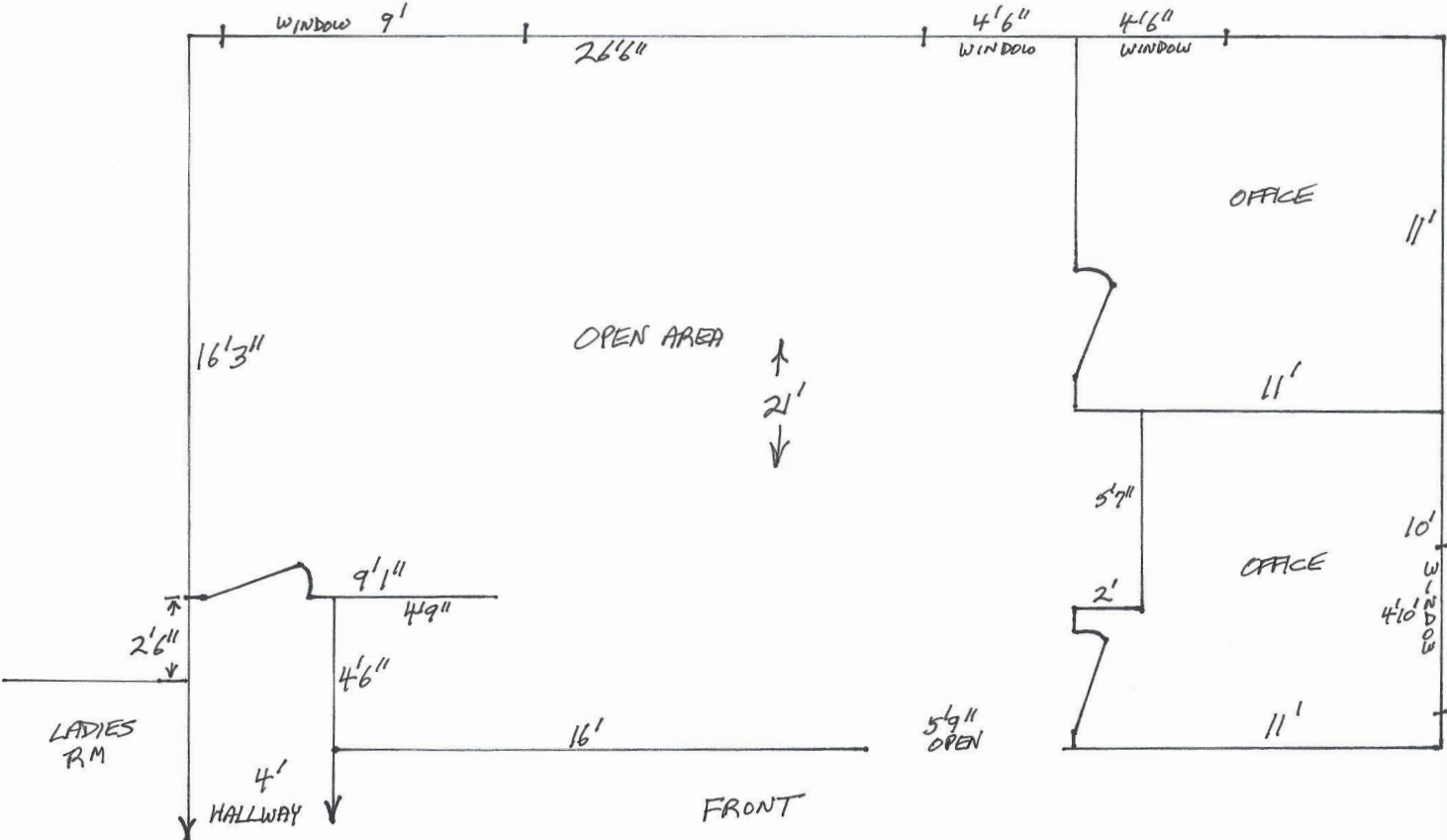


# FLOOR PLAN - BUILDING 1

SUITE 17:  
960 SF

COUNTRY VILLAGE  
BLDG 1, SUITE 17

SCALE:  $\frac{1}{4}'' = 1'$   
10/27/18 JGH  
10/28



# LOCAL AERIAL



merritt clubs

UNITED STATES POSTAL SERVICE

BENNETT RD

Eldersburg Marketplace

Chick-fil-z  
CVS pharmacy

THE HOME DEPOT  
KOHLS  
MARTIN'S  
chili's IHOP

GOLD'S GYM  
Stratosphere

Londontowne Square

LONDONTOWN BL

Eldersburg Crossing

SAFeway  
FIVE GUYS  
BURGERS and FRIES  
ExpressCare  
URGENT CARE CENTERS

five BEEW  
PNC  
Goodwill  
BR&T  
Glory Days  
MICHAEL'S

Walgreens  
Bob E ROYAL FARMS

Starbucks  
POPEYES  
DOLLAR TREE

26

LIBERTY RD

Eldersburg Square

PAPA JOHN'S  
QDOBA MEXICAN EATS  
verizon  
M&T Bank

Freedom Village

LIBERATOR'S RESTAURANT & CATERING  
Panera  
NORAS  
WEE'S FARGO

Advance Auto Parts

McDonald's  
COUNTY CORK PUB  
AutoZone

SITE

weis

DUNKIN' DONUTS  
DQ  
7 ELEVEN

32

SYKESVILLE RD

Eldersburg Commons

Walmart  
TJ-MAXX  
Penny's  
noodles company  
ULTA  
Bank of America  
OLYMPIA Sports  
MOD

26

LIBERTY RD



# DEMOGRAPHICS

2023

RADIUS:

1 MILE

3 MILES

5 MILES

## RESIDENTIAL POPULATION



8,379

27,429

43,414

## DAYTIME POPULATION



7,916

22,626

34,327

## AVERAGE HOUSEHOLD INCOME



\$179,365

\$177,765

\$179,892

## NUMBER OF HOUSEHOLDS



3,175

9,684

15,299

## MEDIAN AGE

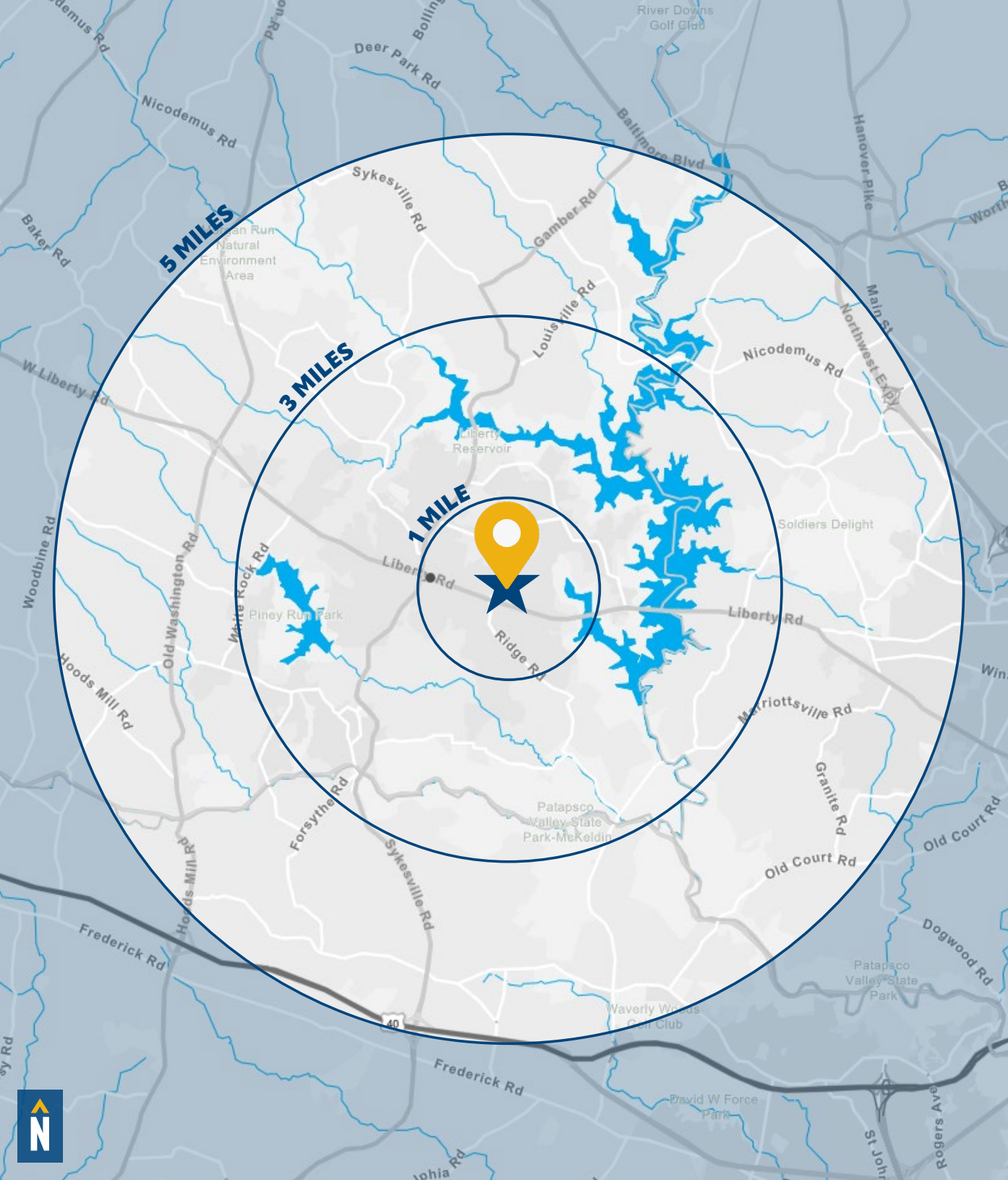


43.0

41.2

42.9

[FULL DEMOS REPORT](#)



# FOR MORE INFO CONTACT:



**DENNIS BOYLE**

SENIOR VICE PRESIDENT

**443.798.9339**

**DBOYLE@mackenziecommercial.com**



**MACKENZIE**

COMMERCIAL REAL ESTATE SERVICES, LLC

**410-872-0400**

10175 Little Patuxent Parkway, Suite 902  
Columbia, MD 21044

OFFICES IN:

ANNAPOLIS

BALTIMORE

BEL AIR

**COLUMBIA**

LUTHERVILLE

[www.MACKENZIECOMMERCIAL.com](http://www.MACKENZIECOMMERCIAL.com)



VISIT **PROPERTY PAGE** FOR MORE INFORMATION.

*No warranty or representation, expressed or implied, is made as to the accuracy of the information contained herein, and same is submitted subject to errors, omissions, change of price, rental or other conditions, withdrawal without notice, and to any specific listing conditions imposed by our principals.*