



147-25
94TH
AVE

3,000 SF RETAIL SPACE FOR LEASE

JAMAICA, QUEENS, NEW YORK

EXCLUSIVE LEASING AGENT

 CUSHMAN & WAKEFIELD



RETAIL GROUND SPACE AVAILABLE

SPACE A	Approx. 1,500 SF (Leased)
SPACE B	Approx. 3,000 SF (Divisible)
TOTAL	Approx. 3,000 SF

Space configuration is flexible

LOCATION	Sutphin Blvd on 94th Avenue
FRONTAGE	94th Avenue Approx. 150 FT
POSSESSION	Immediate
TAXES	Proportionate share of increases over base year
POSSESSION	Immediate
ASKING RENT	Upon Request
NEIGHBORS	Dunkin', Capital One, Bank of America, Chase, Metro by T-Mobile, Crown Fried Chicken & More

COMMENTS

- New construction retail space at the base of a 543 unit residential building
- Residential units fully occupied
- Over 1,500 residential units in the immediate vicinity
- Steps from the Jamaica Station (LIRR) and Sutphin Blvd, Archer Ave, JFK Airport Station, with E, J, and Z subway lines
- Ideal for a variety of users, including retail, medical, restaurant, and fitness



147-25
**94TH
AVE**

APPROX. 3,000 SF TOTAL

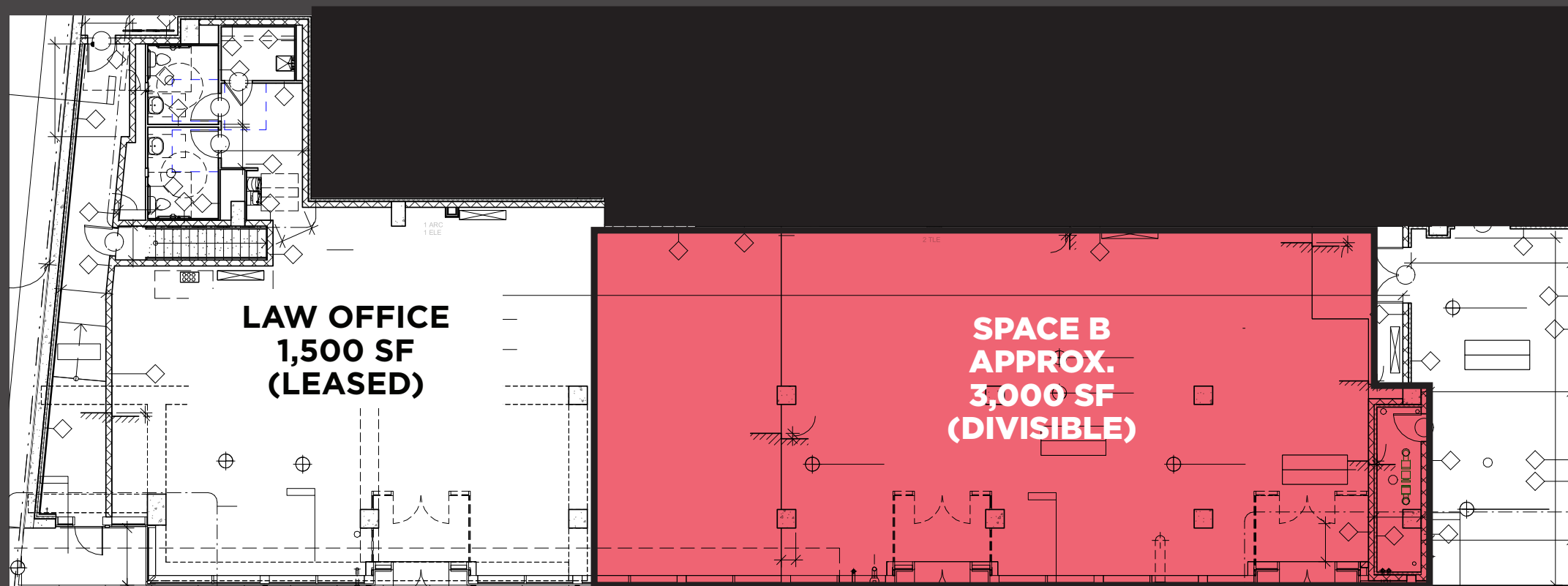
FRONTAGE

APPROX. 150 FT ON 94TH AVENUE

CEILING HEIGHT

APPROX. 19 FT ON GROUND FLOOR

SUTPHIN BOULEVARD



94TH AVENUE



LOCATION MAP

ELIZABETH HOLMES
631 546 5885
elizabeth.d.holmes@cushwake.com



CUSHMANWAKEFIELD.COM

©2024 Cushman & Wakefield. All rights reserved. The information contained in this communication is strictly confidential. This information has been obtained from sources believed to be reliable but has not been verified. NO WARRANTY OR REPRESENTATION, EXPRESS OR IMPLIED, IS MADE AS TO THE CONDITION OF THE PROPERTY (OR PROPERTIES) REFERENCED HEREIN OR AS TO THE ACCURACY OR COMPLETENESS OF THE INFORMATION CONTAINED HEREIN, AND SAME IS SUBMITTED SUBJECT TO ERRORS, OMISSIONS, CHANGE OF PRICE, RENTAL OR OTHER CONDITIONS, WITHDRAWAL WITHOUT NOTICE, AND TO ANY SPECIAL LISTING CONDITIONS IMPOSED BY THE PROPERTY OWNER(S). ANY PROJECTIONS, OPINIONS OR ESTIMATES ARE SUBJECT TO UNCERTAINTY AND DO NOT SIGNIFY CURRENT OR FUTURE PROPERTY PERFORMANCE.

