



FOR LEASE

1643 W. Orange Grove Ave.
Orange, CA

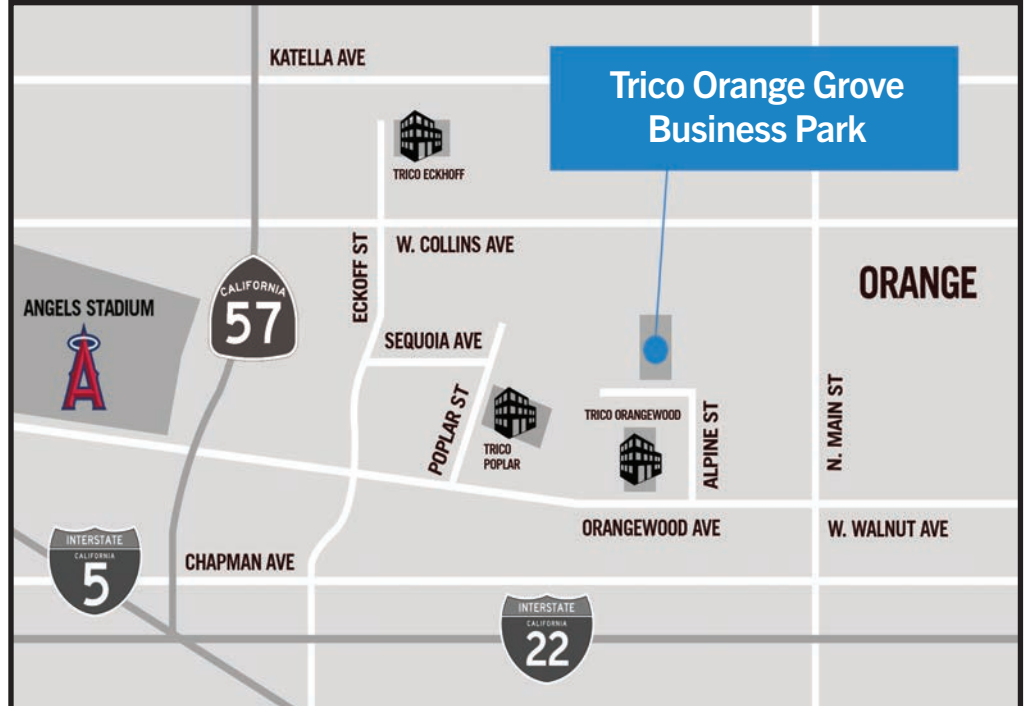
12,600 SF Industrial Unit

SITE HIGHLIGHTS:

- Close Promximity to the 57, 5, and 22 Freeways
- Professionally Managed
- Plenty of Parking

UNIT FEATURES:

- Large Secured Yard!
- 18' Clearance Height
- 2 Ground Level Doors
- Stand Alone Building
- 3-Phase 400 Amp 120/240 Volts of Power



FOR FURTHER DETAILS:

ERIN GARNER

erin@tricoREALTY.com
License #02228139

DAVID KLING

david@tricoREALTY.com
License #01965659

This information has been furnished from sources which we deem reliable; however, we do not guarantee its accuracy and assume no liability. Do not rely on any of the information contained herein without verifying it yourself directly with the listing broker or owner.

Trico Realty, Inc.
License #00342120

3100-A Pullman Street
Costa Mesa, CA 92626

714-751-4420
TricoRealty.com




FOR LEASE

1643 W. Orange Grove Ave.
Orange, CA

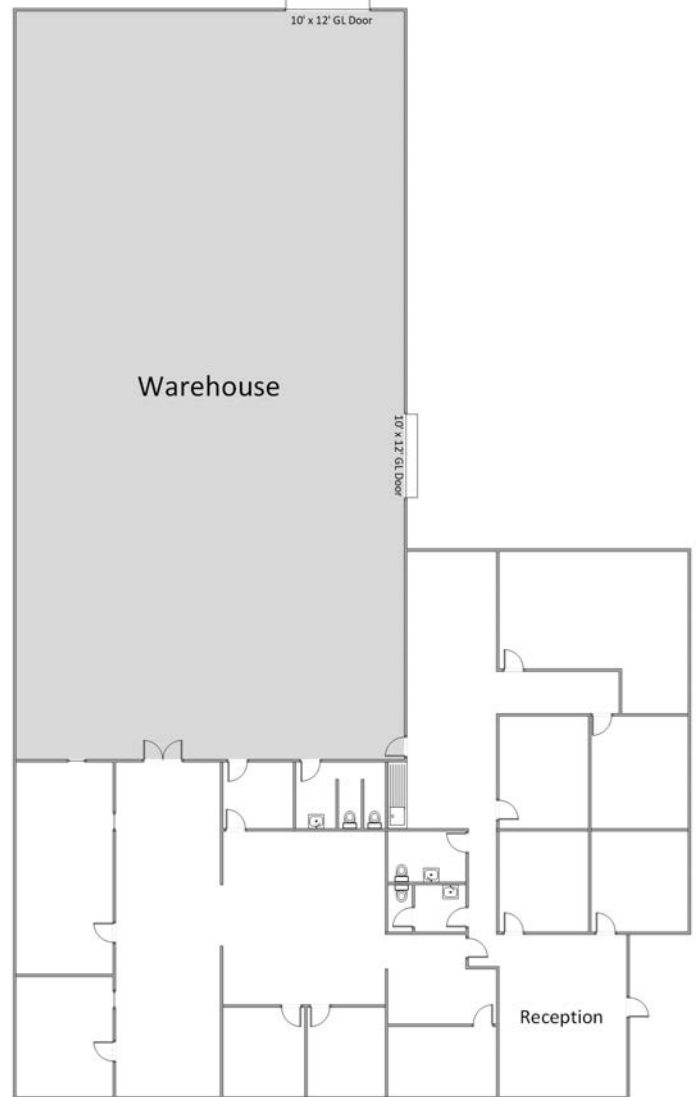
12,600 SF Industrial Unit

Unit Features

 Power: 400A | 120/240

 Clearance Height: 18'

 Ground Level Doors: Two 10'x12'



*Floorplans Not to Scale

ERIN GARNER
erin@tricoREALTY.com
License #02228139

DAVID KLING
david@tricoREALTY.com
License #01965659

714-751-4420
TricoRealty.com
License #00342120