

927 S KANSAS AVE

Topeka, KS 66612



PROPERTY DESCRIPTION

Historic row building for sale in downtown Topeka. Sits in a prime location within walking distance of downtown shopping, restaurants, offices, and the State Capitol.

HIGHLIGHTS

- I-70 access is one block away
- Cyrus Hotel is directly across the street
- The Pennant and Stephen Smith Gallery are on the same block
- Second floor features large windows overlooking Kansas Ave
- Potential for a condo or office on the second floor

OFFERING SUMMARY

Sale Price	\$254,000.00
Building Size	3,696+/- SF
Year Built	1889
Zoning	C-5
Construction	Stud - Brick Veneer
2025 R.E. Taxes	\$6,047.12
Parking	Front door parking available
Traffic Count	8,500+/- vehicles per day

Virtual Walk-Thru Link

<https://my.matterport.com/show/?m=BF4dcz5XT9B>

Listed By:

MARK REZAC

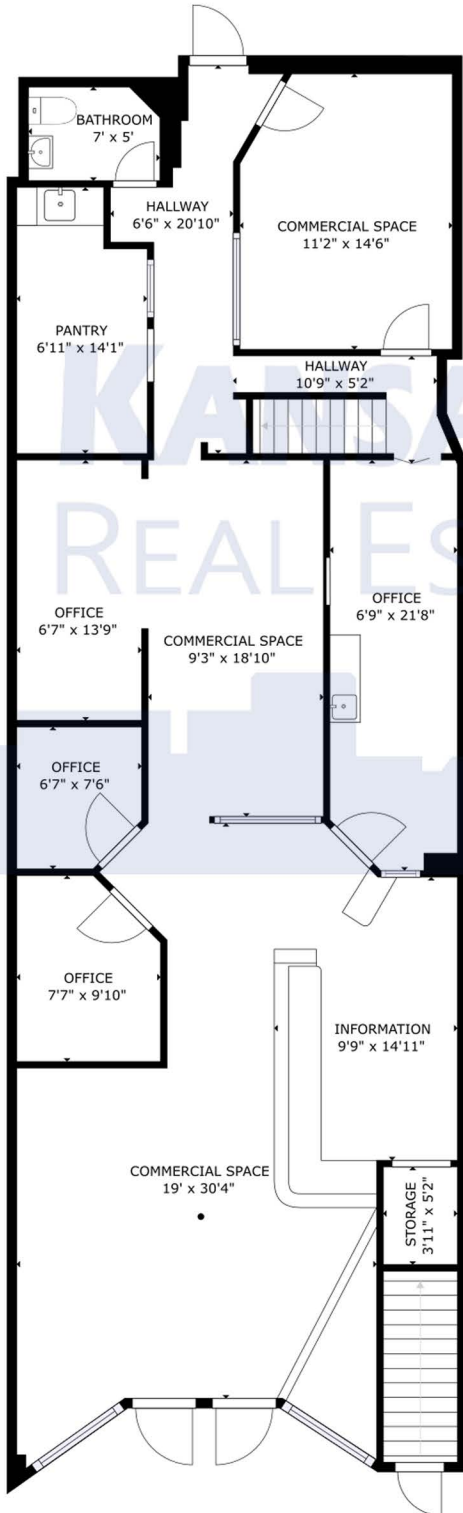
Partner

785.228.5308

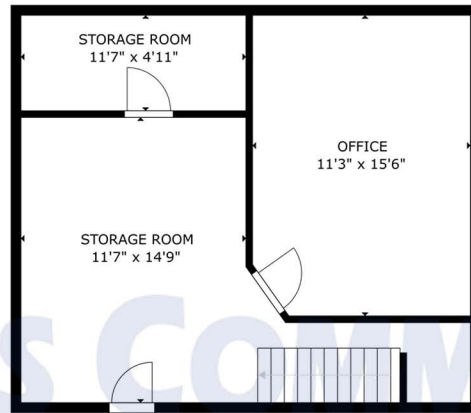
mark@kscommercial.com

All information furnished regarding property for sale or lease is from sources deemed reliable; but no warranty or representation is made as to the accuracy thereof and the same is submitted subject to errors, omissions, changes of price, rental or other conditions prior sale or lease, or withdrawal without notice. The purchaser and or leaser should conduct a careful, independent investigation of the property to determine if the property is suitable for your intended use.

First Floor



Mezzanine



Second Floor

