

1720 EYE STREET, NW

Washington, DC 20006

Office For Lease

5,573 - 6,904 SF



Leasing Information:
202.513.6700

Adam Biberaj
202.513.6736
abiberaj@lpc.com

Merrill Turnbull
202.513.6713
mturnbull@lpc.com

Tim Whitebread
202.513.6712
twhitebread@lpc.com

Lincoln

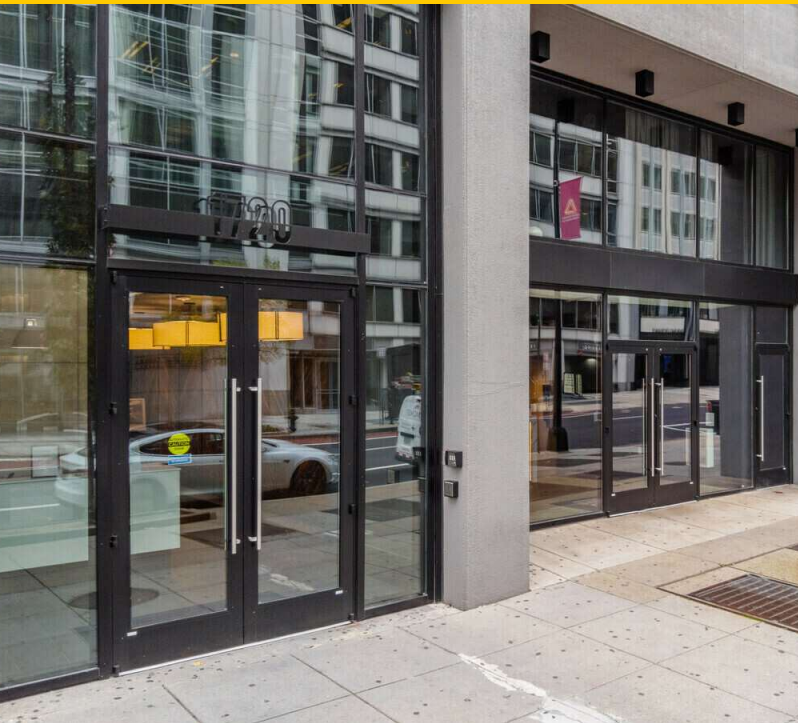
Lincoln Property Company
101 Constitution Avenue, NW Suite 325 East
Washington, DC 20001

www.lpc.com

1720 EYE STREET, NW

Office For Lease

Washington, DC 20006

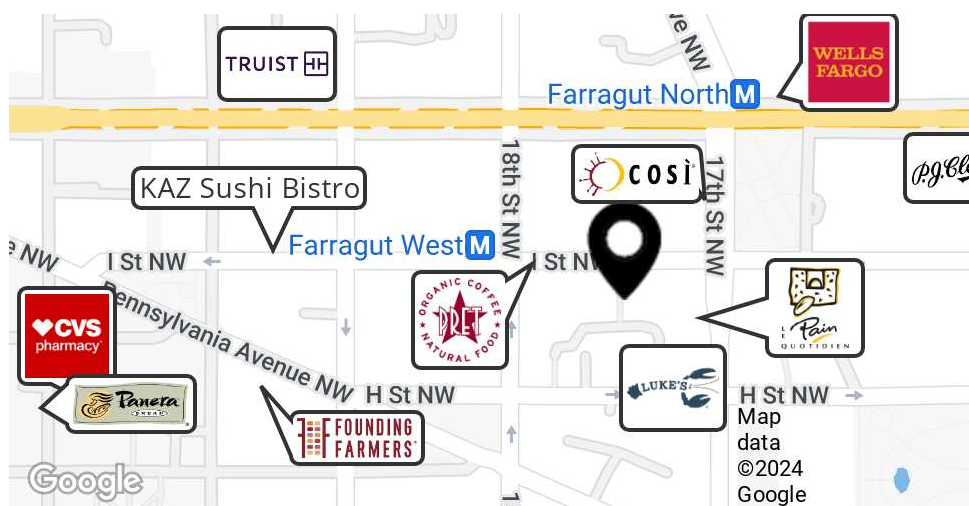


Property Highlights

- Newly renovated entrance, lobby, common areas and elevator cabs
- 6,800 sf of boutique office floor places
- New retail storefronts and façade upgrades featuring industrial windows
- On-site: The Gathering Spot, a full-service restaurant and bar, conference rooms, private offices, podcast room and daily workspace access
- One block from both Farragut West Metro (Orange/Blue/Silver lines) entrances
- Two blocks from Farragut North Metro (Red line)
- On-site property management
- Nearby amenities: Foxtrot Market, La Colombe, Sweetgreen, Loeb's New York Deli, The Bottom Line, P.J. Clarke's, BLT Steak, RARE Steakhouse & Tatte Bakery

Availabilities

Availabilities	SF	Lease Rate	Date Available
5th Floor	6,904 SF	\$49.00 FS	Immediately
6th Floor	5,573 SF	\$49.00 FS	Immediately
7th Floor	6,902 SF	\$49.00 FS	Immediately
8th Floor	6,902 SF	\$49.00 FS	Immediately
9th Floor	6,902 SF	\$49.00 FS	Immediately



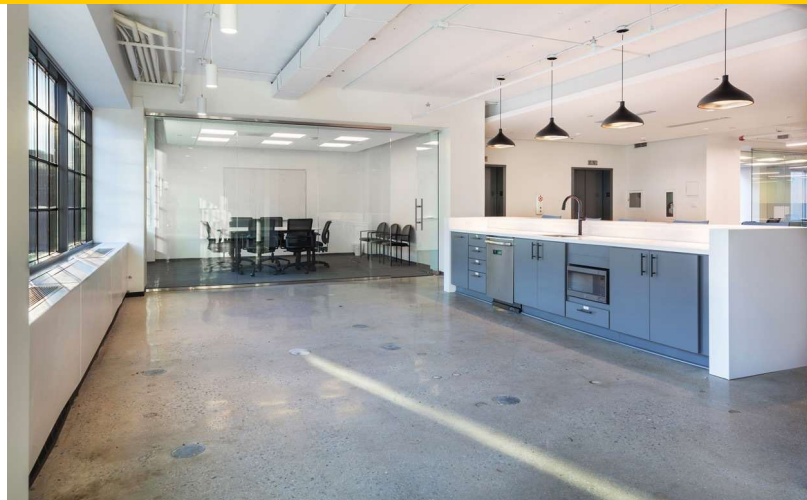
Adam Biberaj 202.513.6736 abiberaj@lpc.com
Merrill Turnbull 202.513.6713 mturnbull@lpc.com
Tim Whitebread 202.513.6712 twhitebread@lpc.com

Lincoln

1720 EYE STREET, NW

Washington, DC 20006

Full Floor Finishes



Adam Biberaj
202.513.6736
abiberaj@lpc.com

Merrill Turnbull
202.513.6713
mturnbull@lpc.com

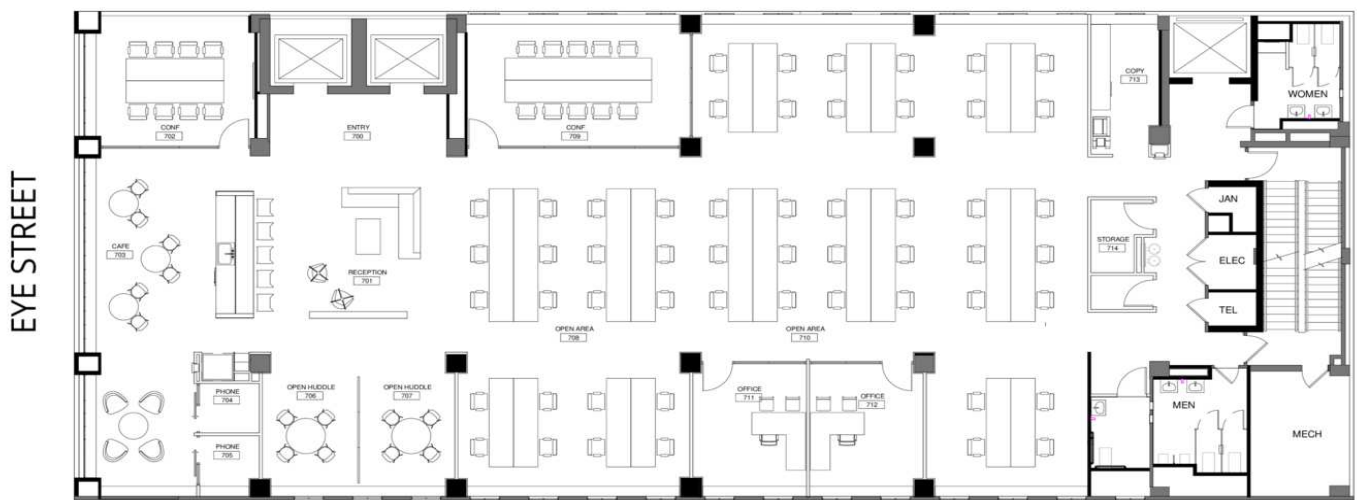
Tim Whitebread
202.513.6712
twhitebread@lpc.com

Lincoln

1720 EYE STREET, NW

9th Floor

Washington, DC 20006



Suite	Size	Lease Rate	Description	Virtual Tour
9th Floor	6,902 SF	\$49.00 FS	Full floor spec suite with beautiful finishes! Bright space on the top floor with reception area, large conference room, small conference room, two huddle rooms, several offices, open space for workstations, and kitchen.	View Here

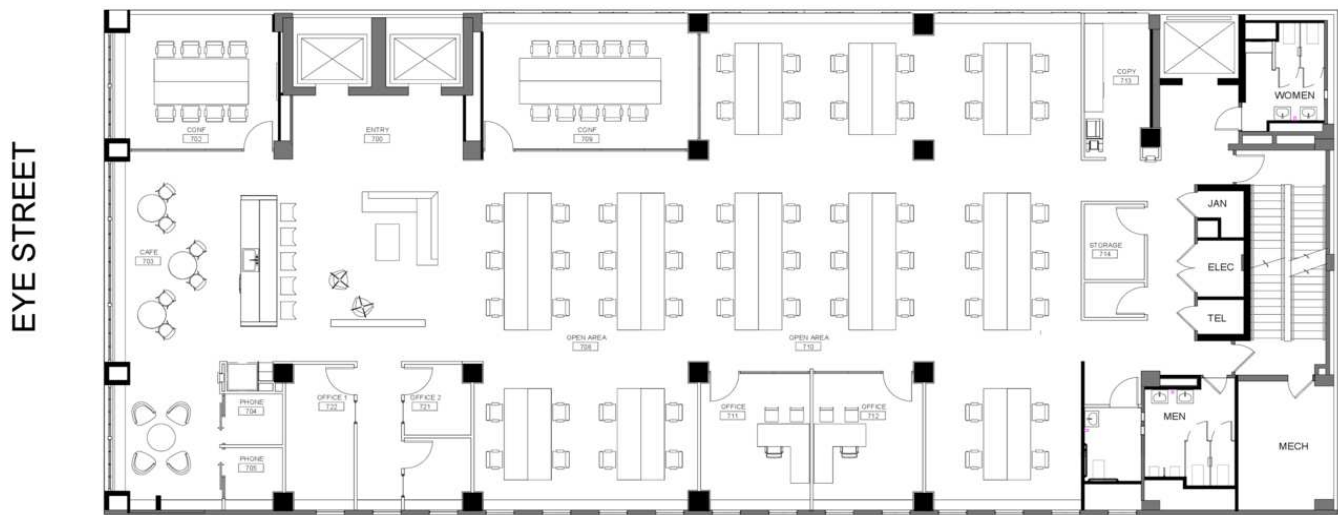
Adam Biberaj **Merrill Turnbull** **Tim Whitebread**
202.513.6736 202.513.6713 202.513.6712
abiberaj@lpc.com mturnbull@lpc.com twhitebread@lpc.com

Lincoln

1720 EYE STREET, NW

7th Floor

Washington, DC 20006



Suite	Size	Lease Rate	Description	Virtual Tour
7th Floor	6,902 SF	\$49.00 FS	Full floor FURNISHED spec suite with beautiful finishes! Bright space on the seventh floor with reception area, large conference room, small conference room, two huddle rooms, several offices, open space for workstations, and kitchen.	View Here

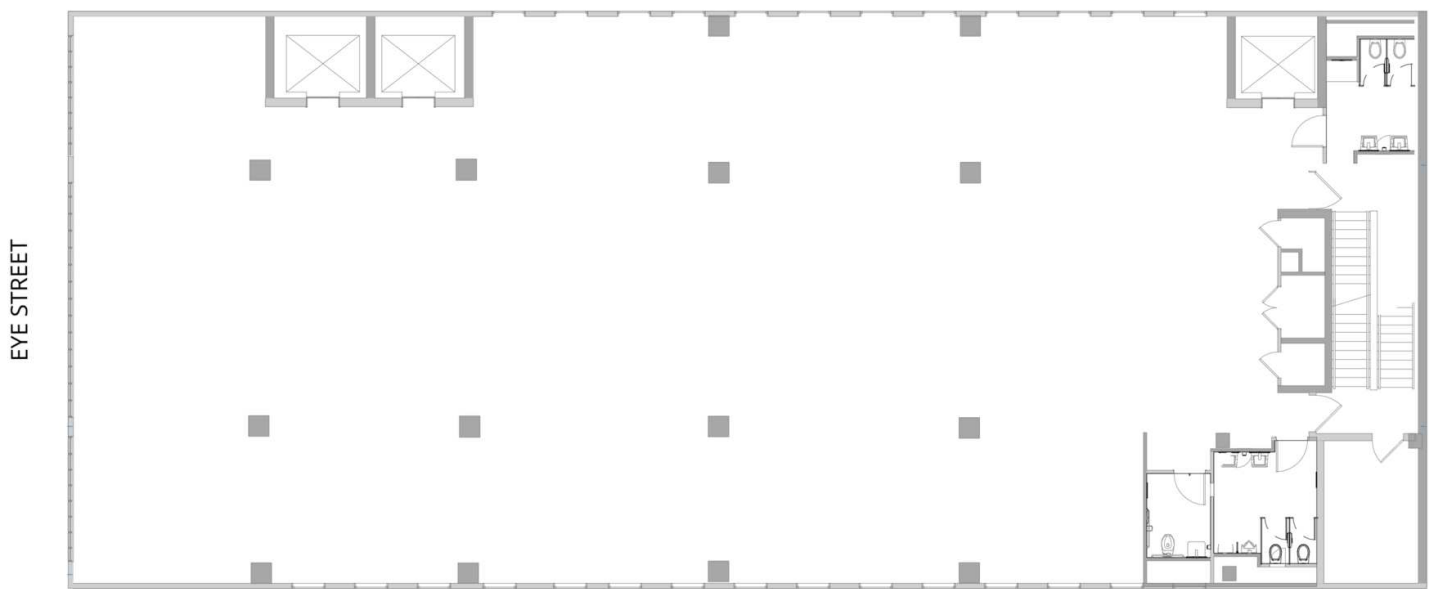
Adam Biberaj **Merrill Turnbull** **Tim Whitebread**
202.513.6736 202.513.6713 202.513.6712
abiberaj@lpc.com mturnbull@lpc.com twhitebread@lpc.com

Lincoln

1720 EYE STREET, NW

6th & 8th Floor

Washington, DC 20006



Suite	Size	Lease Rate	Description
6th Floor	5,573 SF	\$49.00 FS	Turnkey opportunity for a full floor user in recently renovated boutique office building! Renovations include newly new façade, industrial windows, lobby, elevator cabs, and retail storefronts.
8th Floor	6,902 SF	\$49.00 FS	Turnkey opportunity for a full floor user in recently renovated boutique office building! Renovations include newly new façade, industrial windows, lobby, elevator cabs, and retail storefronts.

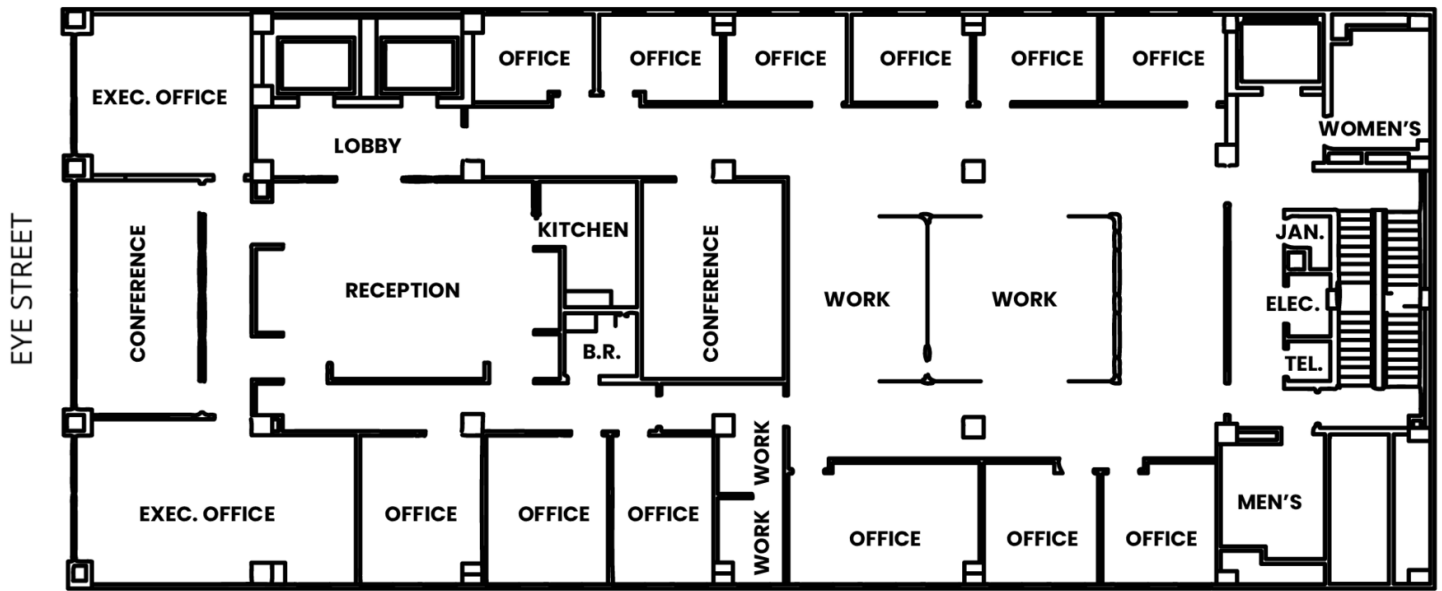
Adam Biberaj **Merrill Turnbull** **Tim Whitebread**
202.513.6736 202.513.6713 202.513.6712
abiberaj@lpc.com mturnbull@lpc.com twhitebread@lpc.com

Lincoln

1720 EYE STREET, NW

5th Floor

Washington, DC 20006



Suite	Size	Lease Rate	Description
5th Floor	6,904 SF	\$49.00 FS	Available Immediately

Adam Biberaj Merrill Turnbull Tim Whitebread
202.513.6736 202.513.6713 202.513.6712
abiberaj@lpc.com mturnbull@lpc.com twhitebread@lpc.com

Lincoln



1720 EYE STREET, NW

Washington, DC 20006

Leasing Information:
202.513.6700

Adam Biberaj
202.513.6736
abiberaj@lpc.com

Merrill Turnbull
202.513.6713
mturnbull@lpc.com

Tim Whitebread
202.513.6712
twhitebread@lpc.com

Lincoln

Lincoln Property Company
101 Constitution Avenue, NW Suite 325 East
Washington, DC 20001

www.lpc.com