



ZARA SPACES

210 BRAND LANE

SWQ of BRAND LANE & HIGHWAY 90, Stafford, TX 77477

Commercial Property Available for Lease

Looking for a strategic location with high visibility and excellent accessibility? This commercial property offers 150 feet of frontage on Brand Lane with two curb cuts, making it an ideal location for businesses looking to expand or establish a strong presence in a thriving commercial hub. With ample parking, move-in-ready spaces, and flexible leasing options, this is a fantastic opportunity for businesses of all sizes.

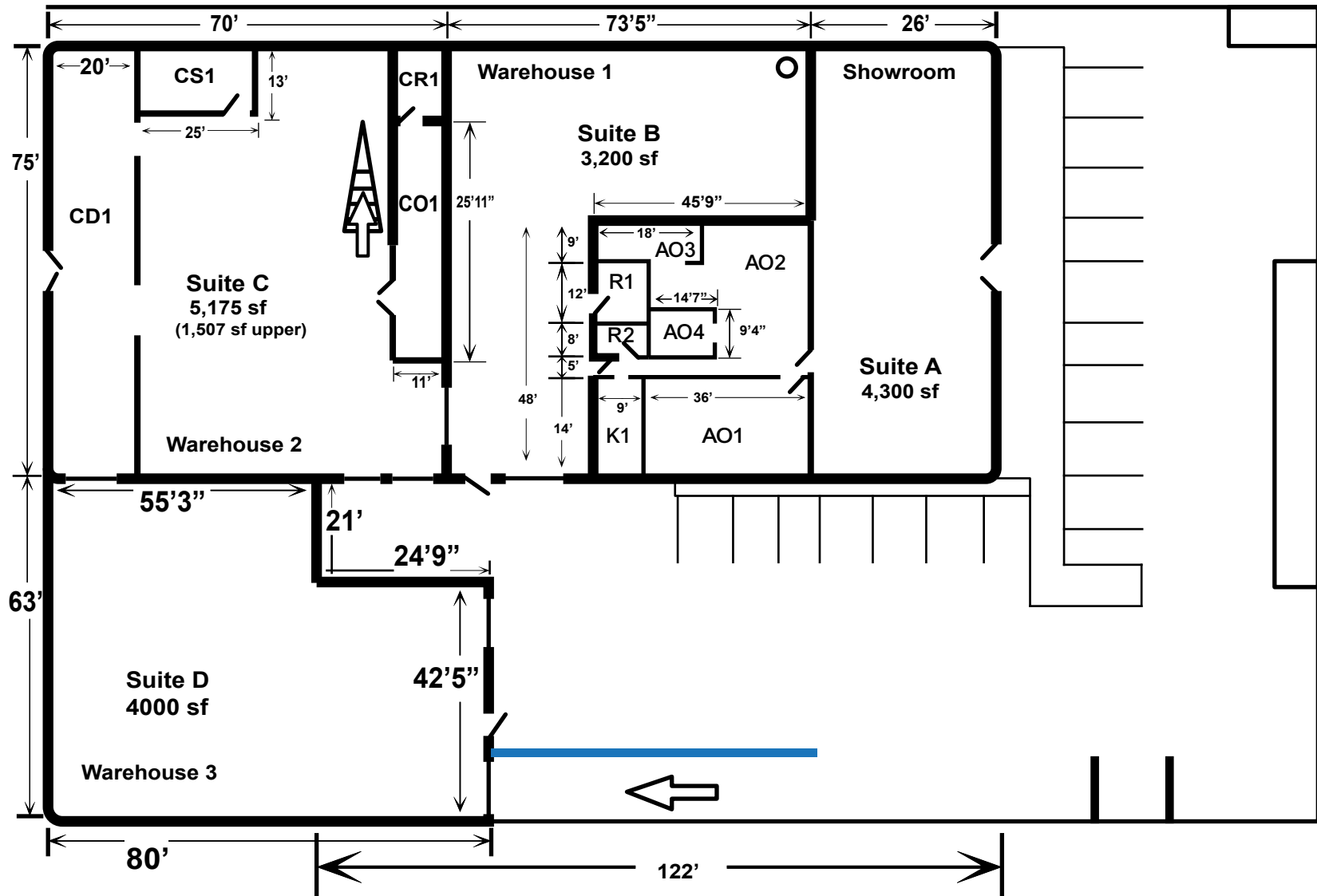


Property Features:

- ✓ **High Visibility** – 150 feet of frontage on Brand Lane.
- ✓ **Easy Access** – Two curb cuts for seamless entry and exit.
- ✓ **Versatile Usage** – Ideal for office, showroom, warehouse, or flex space.
- ✓ **Ample Parking** – Plenty of parking spaces for tenants & visitors.
- ✓ **Convenient Location** – Near major highways & commercial zones.
- ✓ **Modern Infrastructure** – Well-maintained property with essential amenities.
- ✓ **Growth Potential** – Surrounded by a thriving business community.

Position your business for success in one of Stafford's prime commercial corridors. Whether you need an office, showroom, warehouse, or flex space, this property offers the versatility and convenience you need.

Property Site: Floor Plan



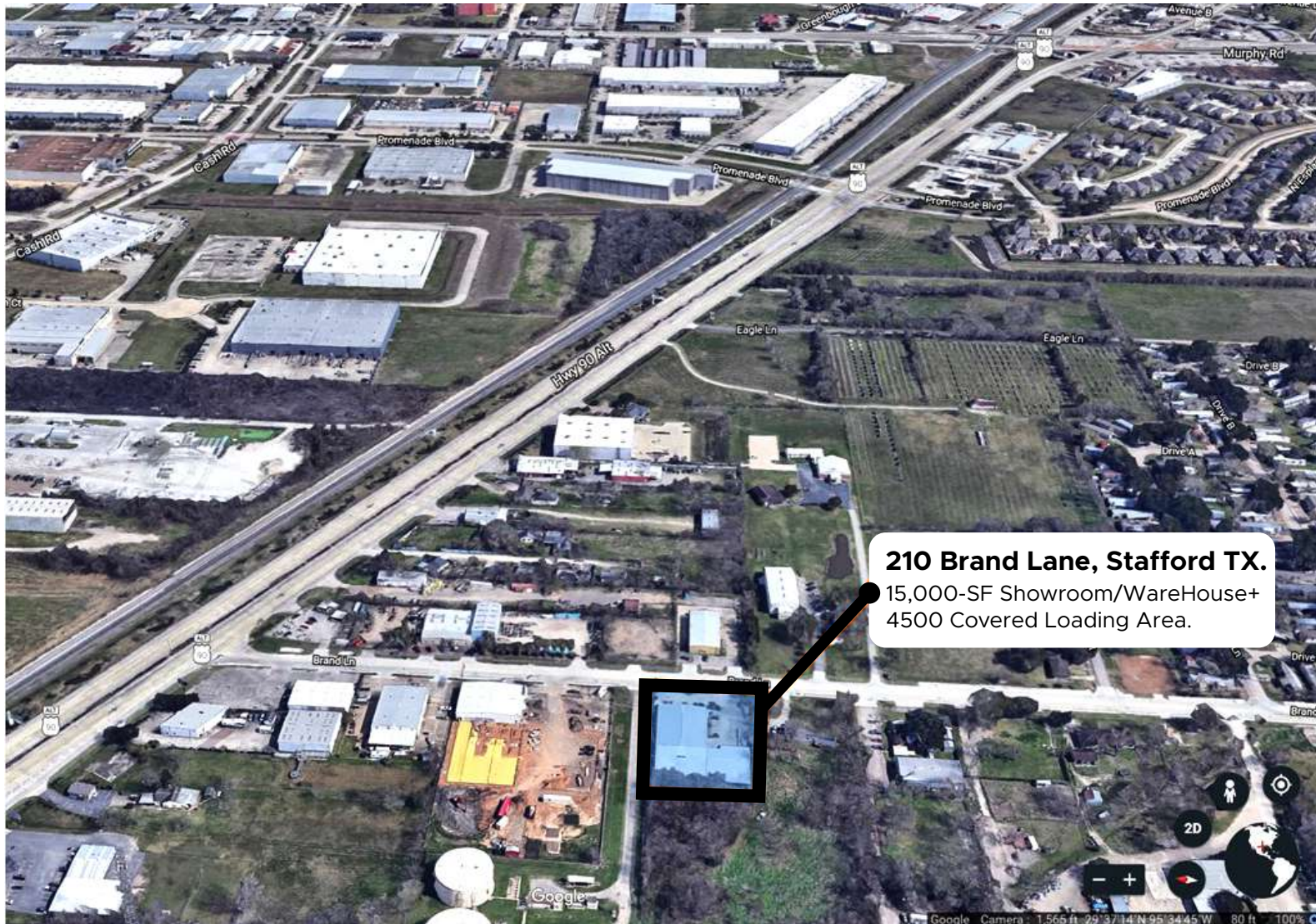
Property Pictures: Suite A – Showroom & Office



Property Pictures: Suite B – Warehouse Space



Site Google Maps



Call Broker for Pricing and More Details!

For inquiries or to schedule a site visit, contact us today:

📍 **Property Location:** SWQ of BRAND LANE & HIGHWAY 90,
210 Brand Lane, Stafford, TX 77477.

👤 **Gunnar Holman**

📞 **Phone:** 281.903.4784

✉️ **Email:** gunnar.holman@zaraspaces.com

🌐 **Website:** www.zaraspaces.com

*Our team is ready to assist you with
leasing, purchasing, or ground lease
options.*

*Don't miss out on this
prime commercial opportunity!*



210 BRAND LANE

SWQ of BRAND LANE & HIGHWAY 90, Stafford, TX 77477