



COMMERCIAL
ASSET GROUP

HAMEL DR

SIGNAGE AVAILABLE

8712 *La Jolie Salon*
Edwards-Jewell
BEVERLY HILLS

Flower by Edwards-Jewell

MEDICAL SPACE AVAILABLE IN BEVERLY HILLS

8712 WILSHIRE BLVD, BEVERLY HILLS, CA 90211

SPACE SIZES

UNIT A: ±671 SF*

UNIT B: ±511 SF*

UNIT C: ±3,328 SF*

**TOTAL SQUARE FOOTAGE:
CONTIGUOUS FOR ±4,510 SF***

LEASE RATE

\$5.00 PSF/MO, MG

AVAILABLE

IMMEDIATELY

TERM

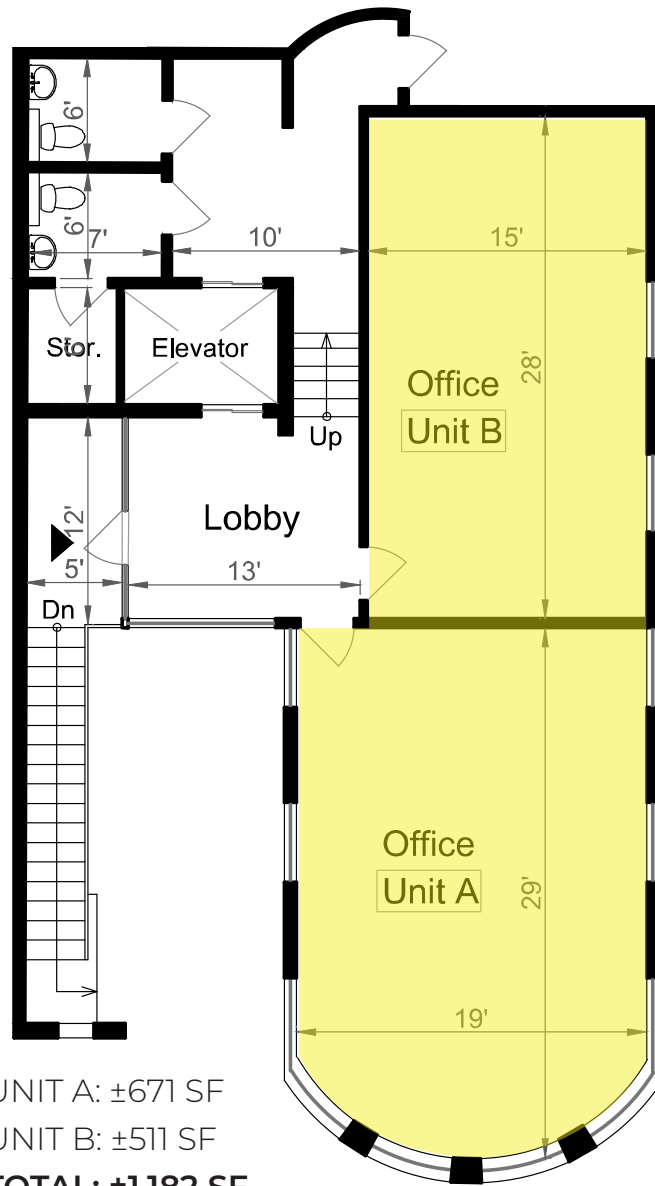
3 - 10 YEARS

PARKING

1/1,000

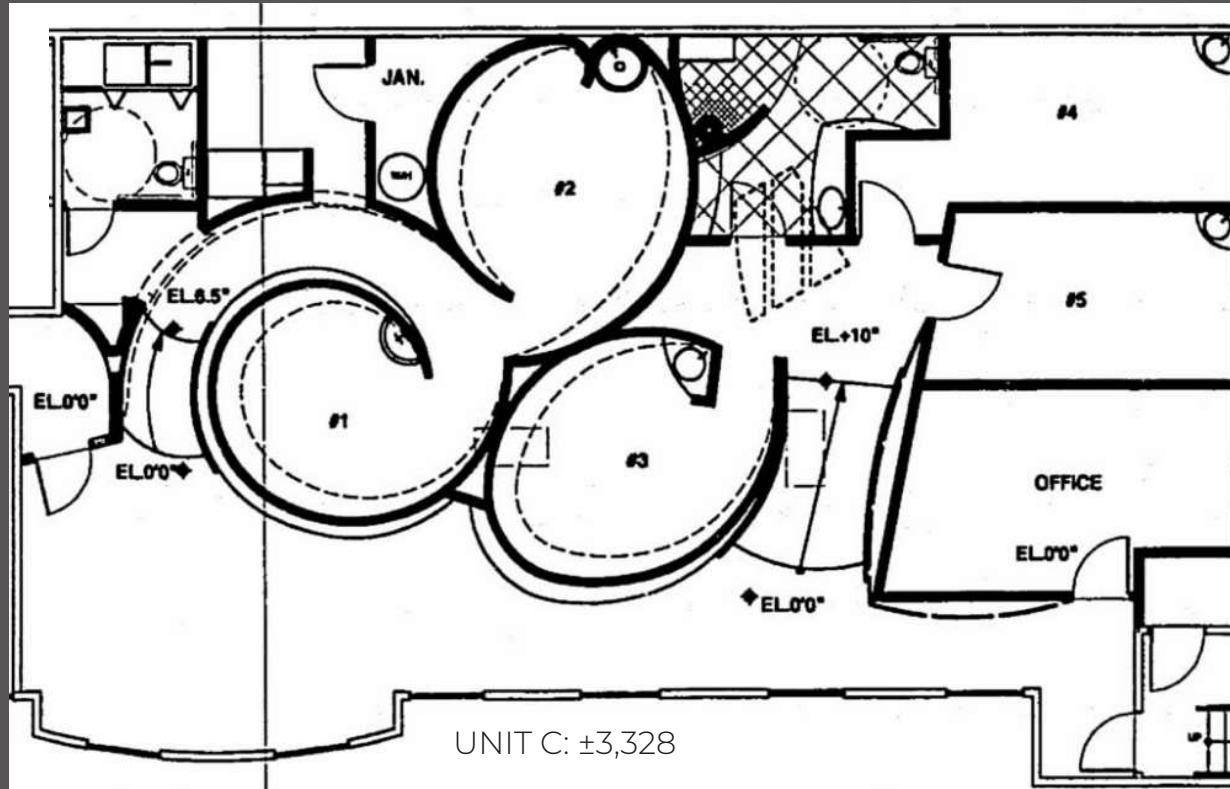
WITH PARKING AVAILABLE NEARBY

These materials are based on information and content provided by others, which we believe are accurate. No guarantee, warranty or representation is made by Commercial Asset Group, Inc. or its personnel. All interested parties must independently verify accuracy and completeness. As well, any projections, assumptions, opinion, or estimates are used for example only and do not represent the current or future performance of the identified property. Your tax, financial, legal and toxic substance advisors should conduct a careful investigation of the property and its suitability for your needs, including land use limitations. The property is subject to prior lease, sale, change in price, or withdrawal from the market without notice.

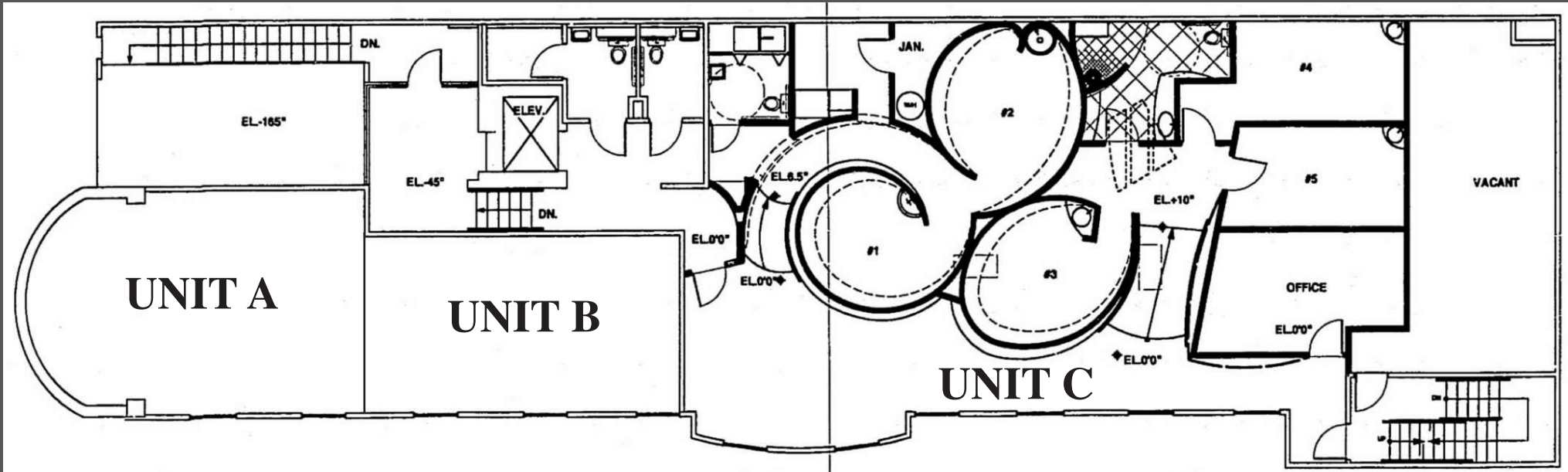


UNIT A: ±671 SF
 UNIT B: ±511 SF
TOTAL: ±1,182 SF

UNIT A + B FLOOR PLAN



UNIT C FLOOR PLAN



UNIT A: ±671 SF
 UNIT B: ±511 SF
 UNIT C: ±3,328 SF
TOTAL: ±4,510 SF

UNIT A, B, + C FLOOR PLAN



INTERIOR PHOTOS



INTERIOR PHOTOS



AERIAL



**COMMERCIAL
ASSET GROUP**

Commercial Asset Group

190 N. Canon Drive, STE 300
Beverly Hills, CA 90210
P 310.275.8222 F 310.275.8223
www.cagre.com LIC. 01876070



Daniel Chiprut

Co-Principal
Commercial Asset Group
D 310.275.8222
daniel@cag-re.com
Lic. 01808709

Adam Funk

Managing Director
Commercial Asset Group
D 310.666.0124
afunk@cagre.com
Lic. 02129715

Steven Salas

Senior Managing Director
Newmark Knight Frank
D 310.508.0660
steven.salas@ngkf.com
Lic. 01232955

Kelly Valdez

Newmark
Brokerage Services Specialist
D 213.596.2239
kelly.valdez@nmrk.com
Lic. 01963632