

FOR LEASE

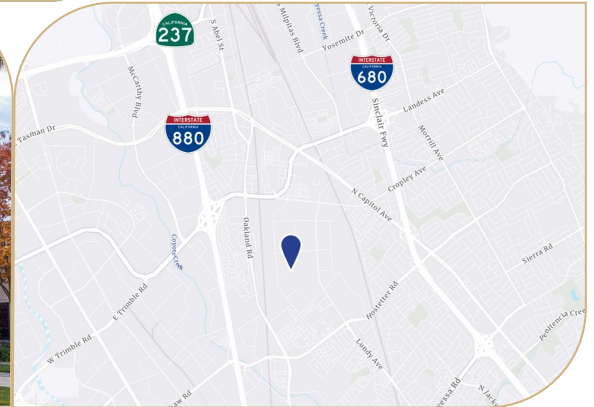
Owned and Operated by



CORPORATE COURT

2058-2060 Corporate Court, San Jose, CA

±23,657 SF R&D/Mfg.

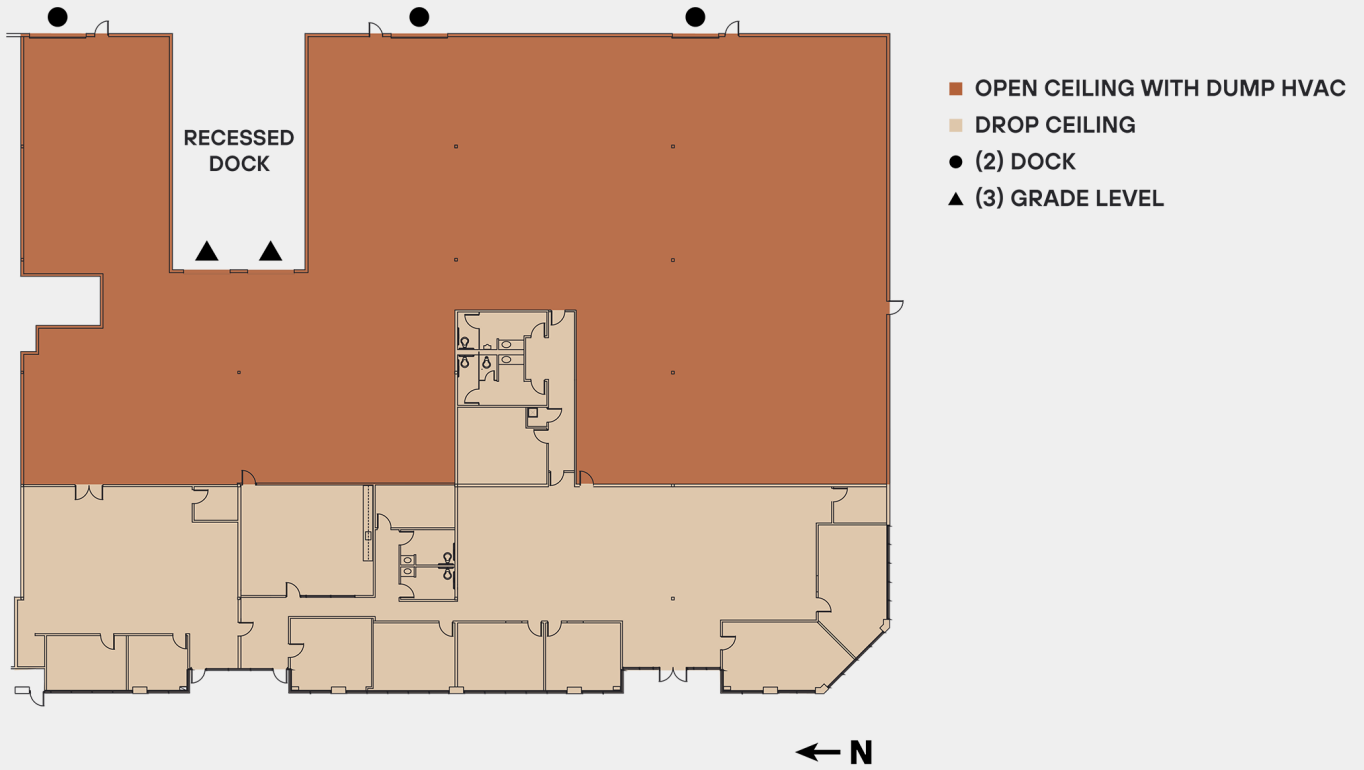


**LEASING INFO
& CONTACT**

Ed Hofer, SIOR (408)482-4182 / ed.hofer@colliers.com / Lic. 00923494
Dave Schmidt, SIOR (408)316-6611 / david.schmidt@colliers.com / Lic. 00821451
Emerson Hofer (408)472-9129 / emerson.hofer@colliers.com / Lic. 02065843

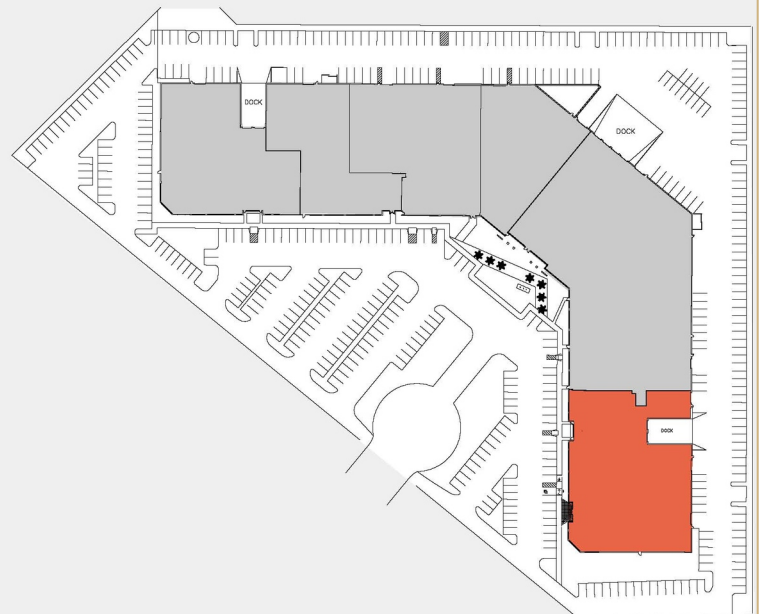


This is not an offer or acceptance of an offer to lease space. A lease will only be offered or made in a written agreement signed by landlord. No representation or warranty of any kind is made by landlord unless set forth in a written definitive lease executed by the landlord.



FEATURES

| | |
|------------------------|----------------------------------------------------------|
| Available space | ±23,657 SF |
| Build out | ±35% Office area ±65% Open ceiling whse/mfg with HVAC |
| Parking | 3.8/1,000 parking |
| Clear height | ±18' |
| Grade level | 3 Grade level loading doors |
| Dock high | 2 Dock high loading doors |
| Power | 400 Amps @ 227/480 Volts |





LUSSO

GRAINGER
FOR THE ONES WHO GET IT DONE

OLYMPUS

 **MICROCHIP**

 **QCT**

CINTAS Purewafer

BESTRONICS
an EmeraldEMS Company

 **UNITED MECHANICAL**

 DeVry University

CLEARIST

SVM

brandvia

SIERRA CIRCUITS

INTERSTATE 880

MASS

AMAZING
Packaging Supplies, Inc.

ZOLL



 **PRIME ELECTRIC**  synaptics



 **SUPERMICR**



Oakland Rd

Murphy Ave

Lundy Ave

E Brokaw Rd

MASS TRANSIT

-  **BART Line**
1.7 mi to Milpitas Station
-  **VTA Light Rail**
1.7 mi to S Milpitas Station