

57/70 Industrial Park – 16 Acres Remain FOR LEASE

11 S 59th Lane, Kansas City, KS



Lynn Holcomb, SIOR
holcomb@fishmancommercial.com
913.747.3301 O 816.289.1526 C

Ryan Holcomb
rholcomb@fishmancommercial.com
913.747.3321 O 913.526.2904 C



TRUCK-TRAILER PARKING/OUTSIDE STORAGE/ LAYDOWN SITES – 16 ACRES FOR LEASE

11 S 59th Lane, Kansas City, KS



16 acres for outside storage, truck trailer parking, and laydown sites to include:

- Fence, gates, and approved surface
- Security lighting
- Modular office buildings
- 5 acres currently available, divisible to 2.5 acres
- Park is not in the flood plain
- Excellent highway access to I-70, I-435, I-35, and I-635

LEASE RATE: \$2,450 per acre per month (includes base month taxes)

Lynn Holcomb, SIOR
holcomb@fishmancommercial.com
913.747.3301 O 816.289.1526 C

Ryan Holcomb
rholcomb@fishmancommercial.com
913.747.3321 O 913.526.2904 C



16 Acres Remaining FOR LEASE Only

11 S 59th Lane, Kansas City, KS



Lynn Holcomb, SIOR
holcomb@fishmancommercial.com
913.747.3301 O 816.289.1526 C

Ryan Holcomb
rholcomb@fishmancommercial.com
913.747.3321 O 913.526.2904 C



Optimal Proximity to Major Highways, Logistics Hubs and Metro Industrial Parks

Turner Logistics Center and
Amazon Distribution Facility



Lynn Holcomb, SIOR
lholcomb@fishmancommercial.com
913.747.3301 O 816.289.1526 C

Ryan Holcomb
rholcomb@fishmancommercial.com
913.747.3321 O 913.526.2904 C



24 x 60 Modular Office Building On Site

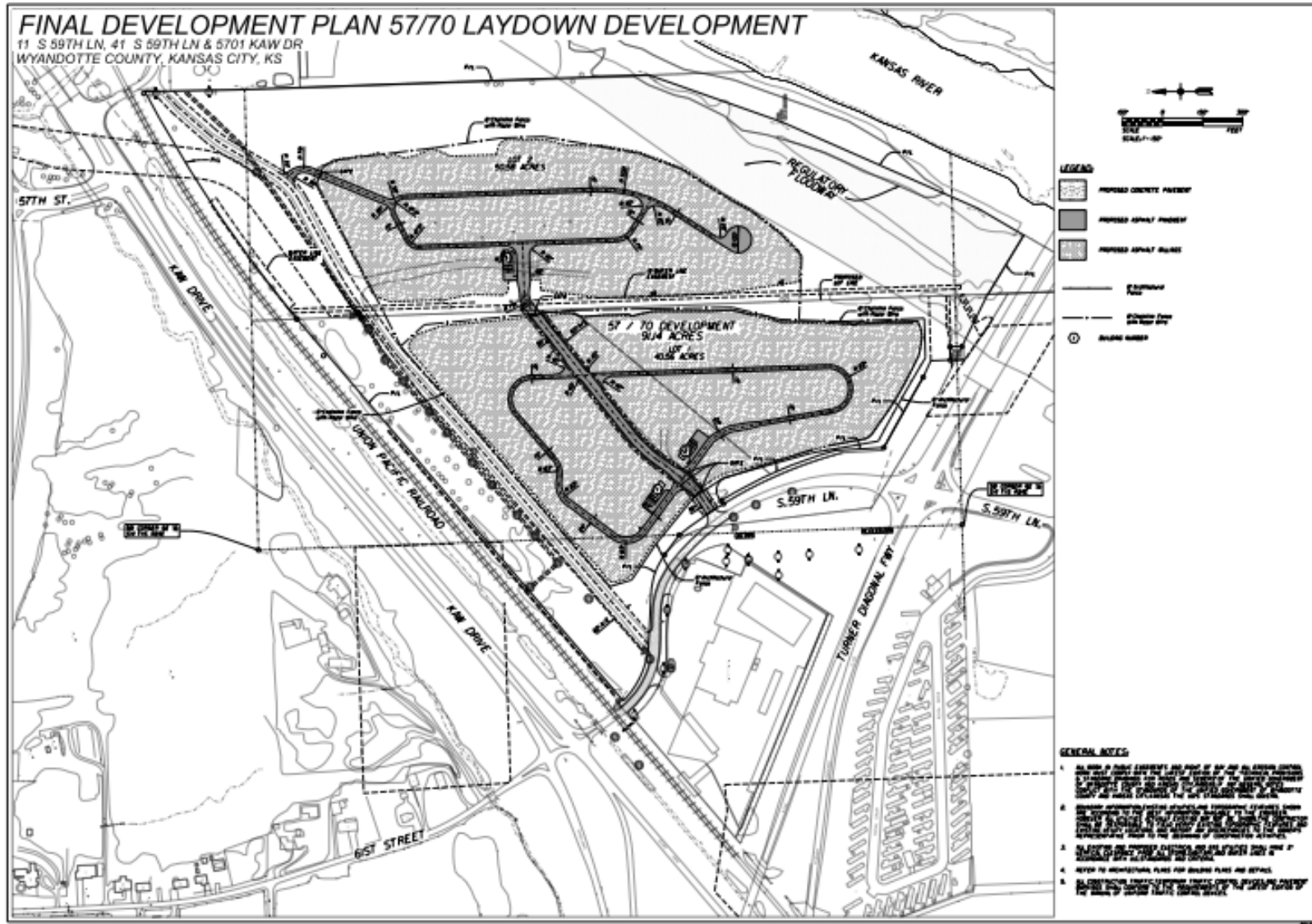
11 S 59th Lane, Kansas City, KS



Lynn Holcomb, SIOR
holcomb@fishmancommercial.com
913.747.3301 O 816.289.1526 C

Ryan Holcomb
rholcomb@fishmancommercial.com
913.747.3321 O 913.526.2904 C

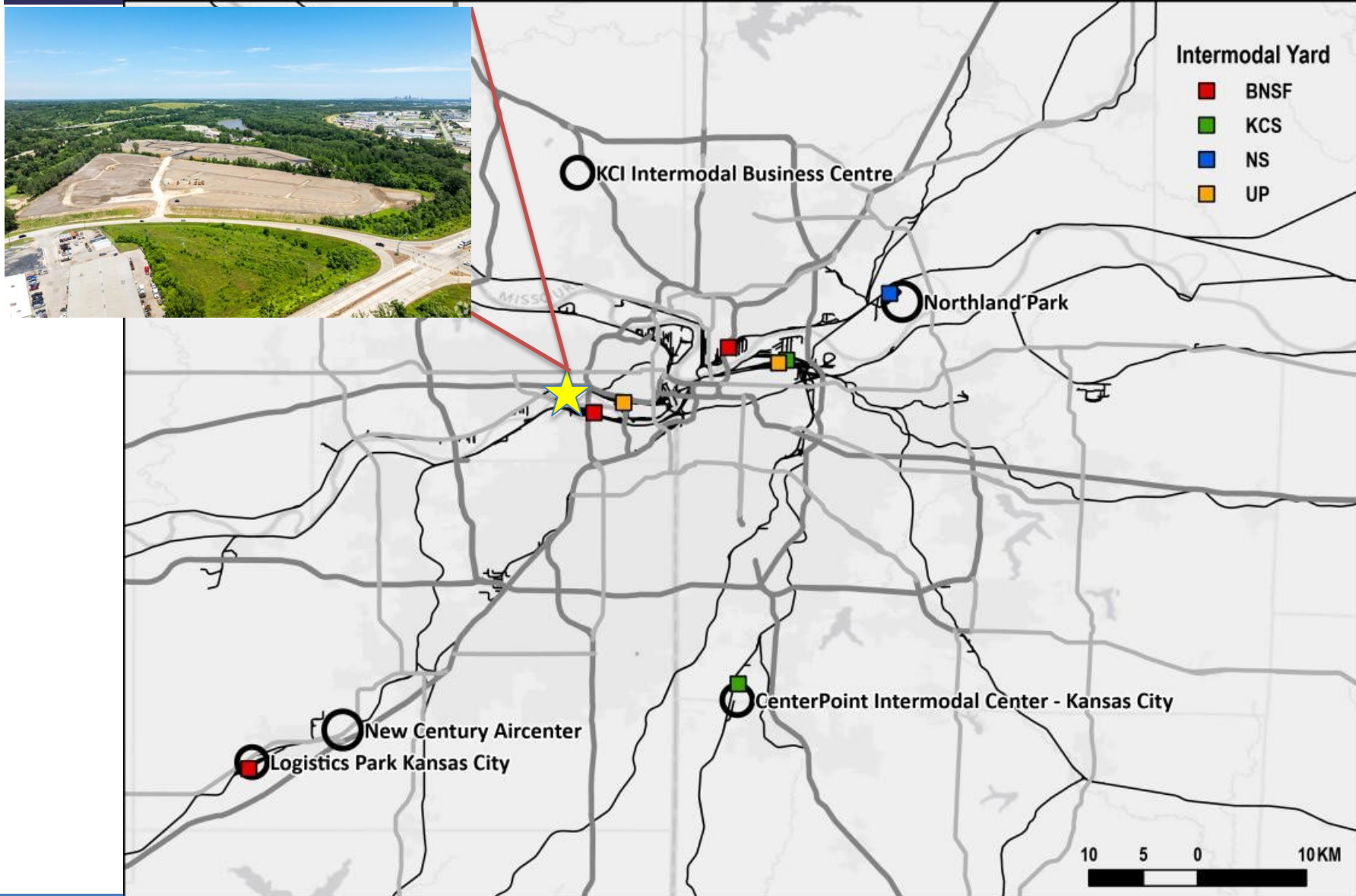




Lynn Holcomb, SIOR
holcomb@fishmancommercial.com
 913.747.3301 O 816.289.1526 C

Ryan Holcomb
rolcomb@fishmancommercial.com
 913.747.3321 O 913.526.2904 C

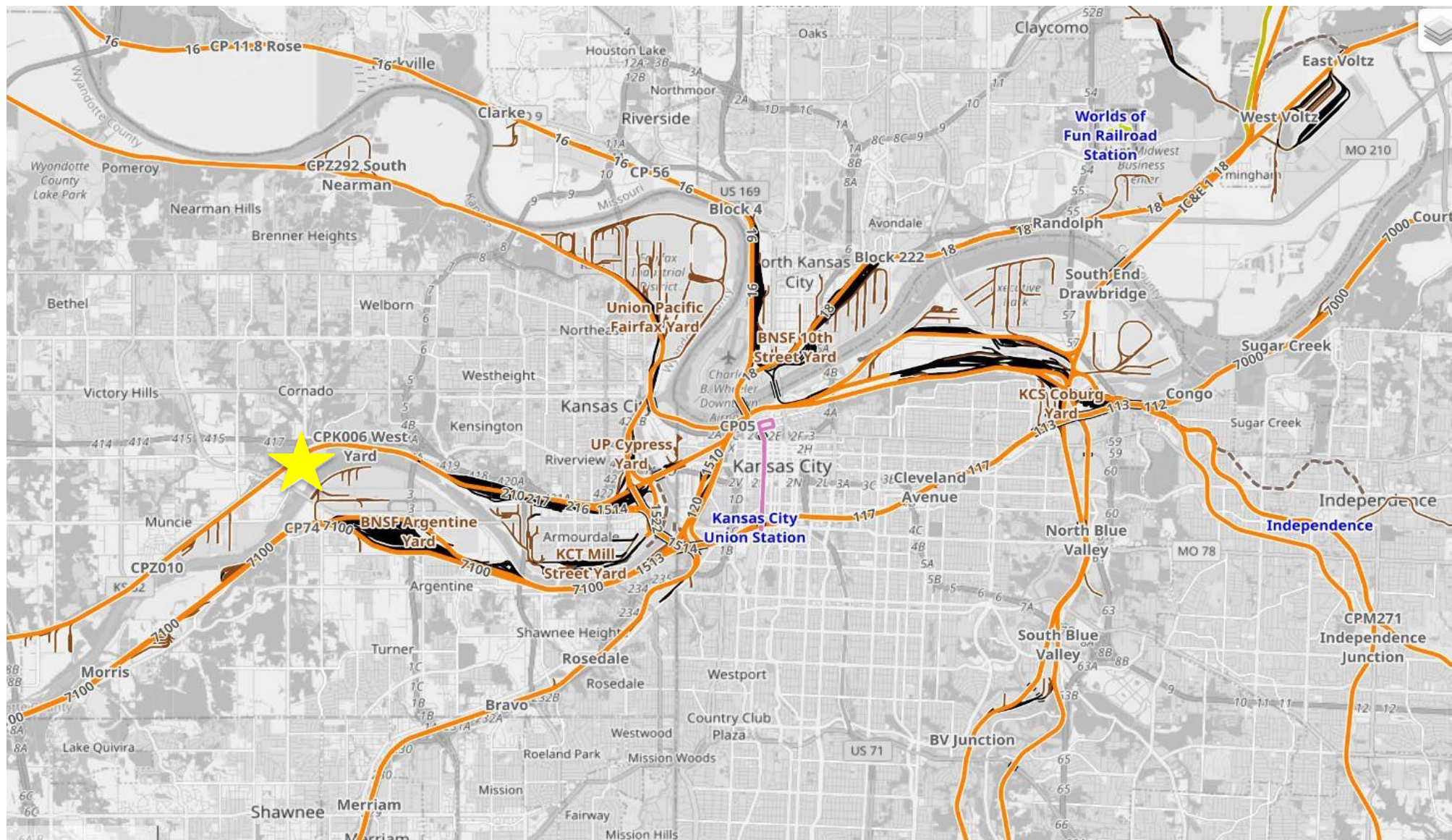




Lynn Holcomb, SIOR
lholcomb@fishmancommercial.com
913.747.3301 O 816.289.1526 C

Ryan Holcomb
rholcomb@fishmancommercial.com
913.747.3321 O 913.526.2904 C

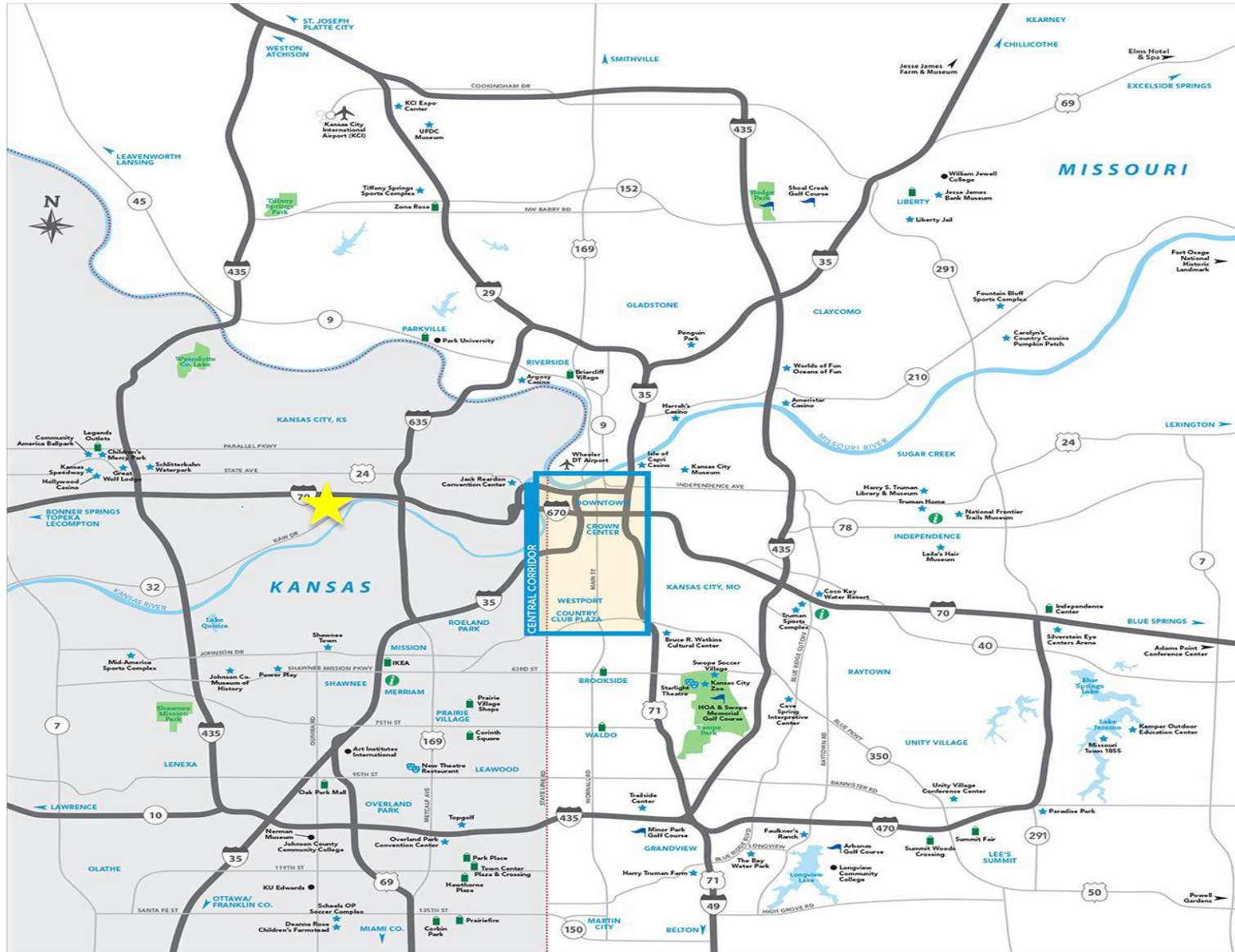




Lynn Holcomb, SIOR
holcomb@fishmancommercial.com
913.747.3301 O 816.289.1526 C

Ryan Holcomb
rolcomb@fishmancommercial.com
913.747.3321 O 913.526.2904 C

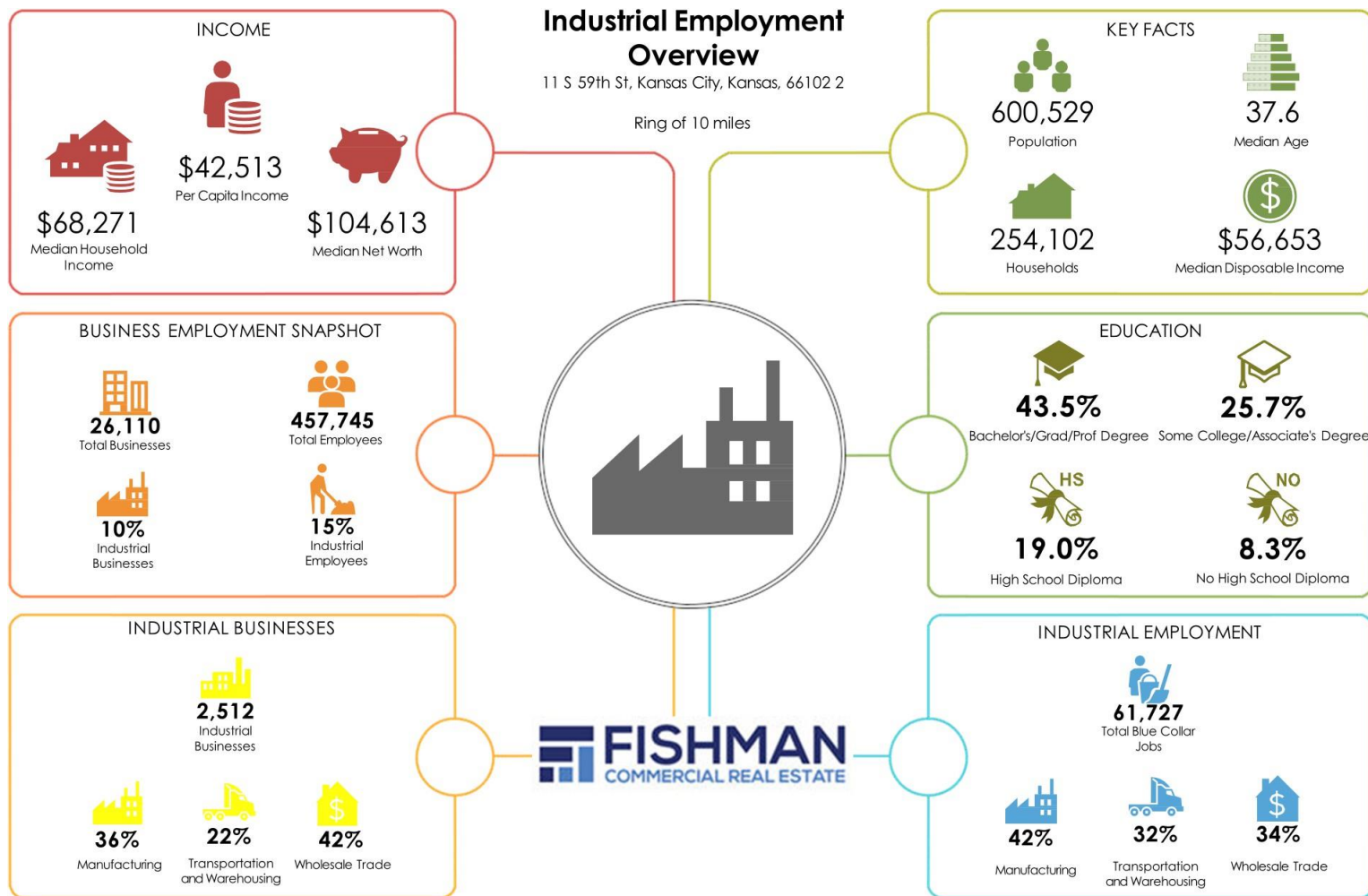




Lynn Holcomb, SIOR
holcomb@fishmancommercial.com
913.747.3301 O 816.289.1526 C

Ryan Holcomb
rolcomb@fishmancommercial.com
913.747.3321 O 913.526.2904 C





Lynn Holcomb, SIOR
holcomb@fishmancommercial.com
 913.747.3301 O 816.289.1526 C

Ryan Holcomb
rholtomb@fishmancommercial.com
 913.747.3321 O 913.526.2904 C

