

**1930 HANAHAN RD**  
NORTH CHARLESTON, SC 29406



**FOR LEASE**



**Contact us:**

**Jeremy Willits**  
Senior Vice President  
+1.843.270.9205

[jeremy.willits@harborcommercialpartners.com](mailto:jeremy.willits@harborcommercialpartners.com)

**Gerry Schauer, CCIM**  
Partner  
+1.843.364.2055

[gerry.schauer@harborcommercialpartners.com](mailto:gerry.schauer@harborcommercialpartners.com)

# 1930 HANAHAN RD

NORTH CHARLESTON, SC 29406

## PROPERTY INFORMATION

TAX MAP ID 475-08-00-003  
COUNTY CHARLESTON  
ZONING LIGHT INDUSTRIAL

## HIGHLIGHTS

This is a nicely appointed, economically priced office space in a central location.

Located in a multi-tenant warehouse in the heart of North Charleston, it is currently designed with 22 private offices, large conference room, break room/kitchenette, reception, IT closet, file rooms, well appointed men's and women's restrooms plus ADA compliant restrooms and 30+ parking spaces.

## OFFERING

UNIT 500

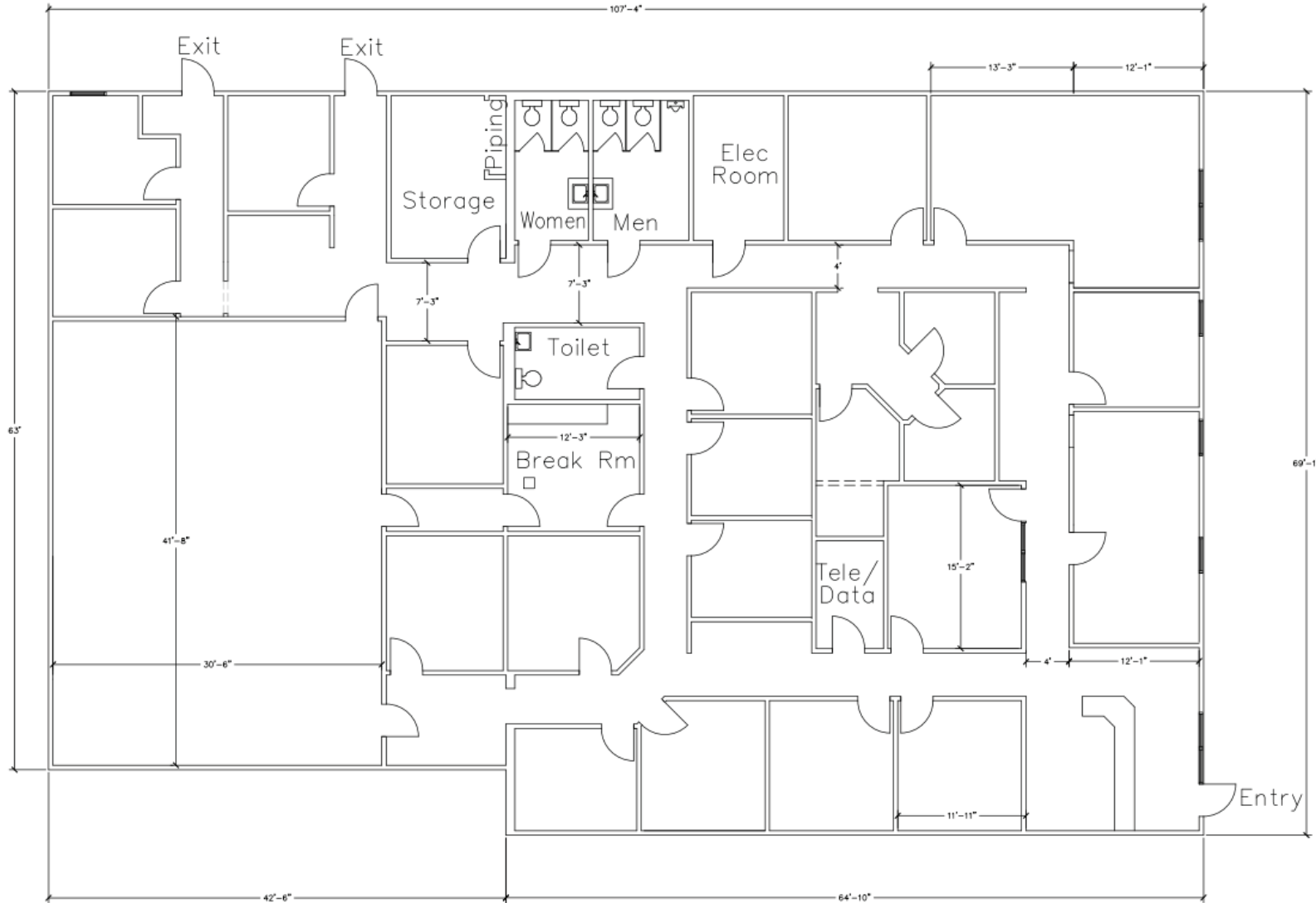
SIZE	LEASE RATE	LEASE TYPE	AVAILABLE
6,969 SF	\$15 PSF	GROSS	NOW



# 1930 HANAHAN RD

NORTH CHARLESTON, SC 29406

## FLOOR PLAN



Contact us:

Jeremy Willits  
Senior Vice President  
+1.843.270.9205  
jeremy.willits@harborcommercialpartners.com

Gerry Schauer, CCIM  
Partner  
+1.843.364.2055  
gerry.schauer@harborcommercialpartners.com

# 1930 HANAHAN RD

NORTH CHARLESTON, SC 29406



Contact us:

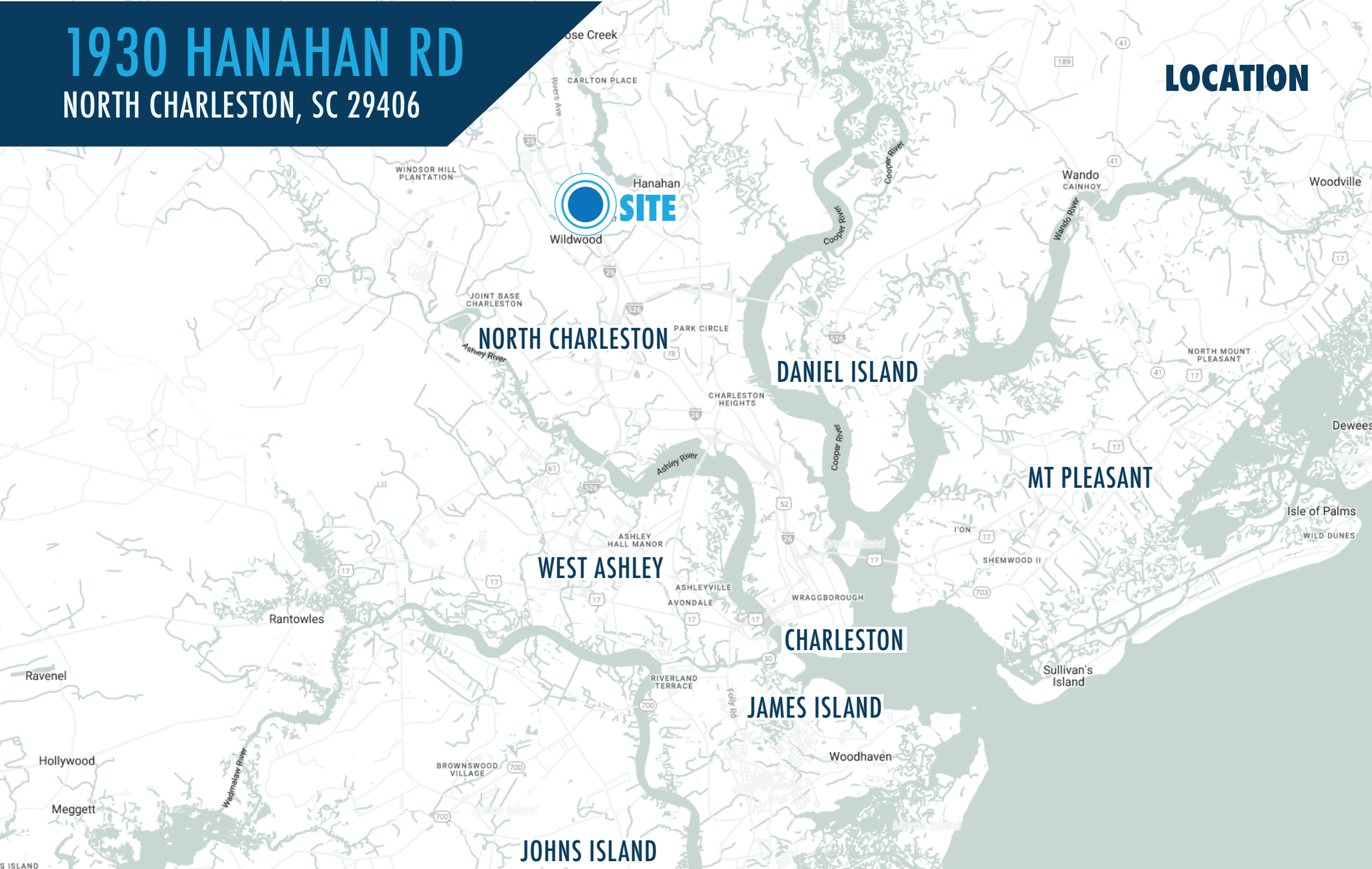
Jeremy Willits  
Senior Vice President  
+1.843.270.9205  
jeremy.willits@harborcommercialpartners.com

Gerry Schauer, CCIM  
Partner  
+1.843.364.2055  
gerry.schauer@harborcommercialpartners.com

# 1930 HANAHAN RD

NORTH CHARLESTON, SC 29406

## LOCATION



### Contact us:

Jeremy Willits  
Senior Vice President  
+1.843.270.9205

[jeremy.willits@harborcommercialpartners.com](mailto:jeremy.willits@harborcommercialpartners.com)

Gerry Schauer, CCIM  
Partner  
+1.843.364.2055

[gerry.schauer@harborcommercialpartners.com](mailto:gerry.schauer@harborcommercialpartners.com)

# 1930 HANAHAN RD

NORTH CHARLESTON, SC 29406

## AMENITIES MAP



### Contact us:

Jeremy Willits  
Senior Vice President  
+1.843.270.9205  
jeremy.willits@harborcommercialpartners.com

Gerry Schauer, CCIM  
Partner  
+1.843.364.2055  
gerry.schauer@harborcommercialpartners.com

# 1930 HANAHAN RD

NORTH CHARLESTON, SC 29406

## DEMOGRAPHICS

ONE MILE

THREE MILES

FIVE MILES



POPULATION

**6,907**

**54,131**

**141,744**



MEDIAN AGE

**36.4**

**36.5**

**36.1**



AVG HOUSEHOLD INCOME

**\$57,397**

**\$66,343**

**\$69,724**

**Contact us:**

**1930 HANAHAN RD**  
NORTH CHARLESTON, SC 29406



**Contact us:**

146 Williman Street, Units 300 & 400  
Charleston, SC 29403

[www.harborcommercialpartners.com](http://www.harborcommercialpartners.com)

+1.843.994.7198



**Jeremy Willits**

Senior Vice President

+1.843.270.9205

[jeremy.willits@harborcommercialpartners.com](mailto:jeremy.willits@harborcommercialpartners.com)



**Gerry Schauer, CCIM**

Partner

+1.843.364.2055

[gerry.schauer@harborcommercialpartners.com](mailto:gerry.schauer@harborcommercialpartners.com)