

# 725 FOLSOM STREET

FOR LEASE | GROUND FLOOR CREATIVE OFFICE OR RETAIL IN SOMA

**TCP**  
**TOUCHSTONE**  
COMMERCIAL PARTNERS



[WWW.TCPRE.COM](http://WWW.TCPRE.COM)

**ZACH HAUPERT** [zhaupert@tcpre.com](mailto:zhaupert@tcpre.com)  
D 415.539.1121 | C 415.812.1219

**MICHAEL SANBERG** [msanberg@tcpre.com](mailto:msanberg@tcpre.com)  
D 415.539.1103 | C 415.697.6088

**TREVOR GUDIM** [trevor@tcpre.com](mailto:trevor@tcpre.com)  
D 415.539.1122 | C 858.922.2632

# 725 FOLSOM STREET

## PROPERTY SUMMARY

### ADDRESS

725 Folsom Street, San Francisco, CA 94107

### AVAILABLE SPACE

+/- 7,000 Square Feet

### RENTAL RATE

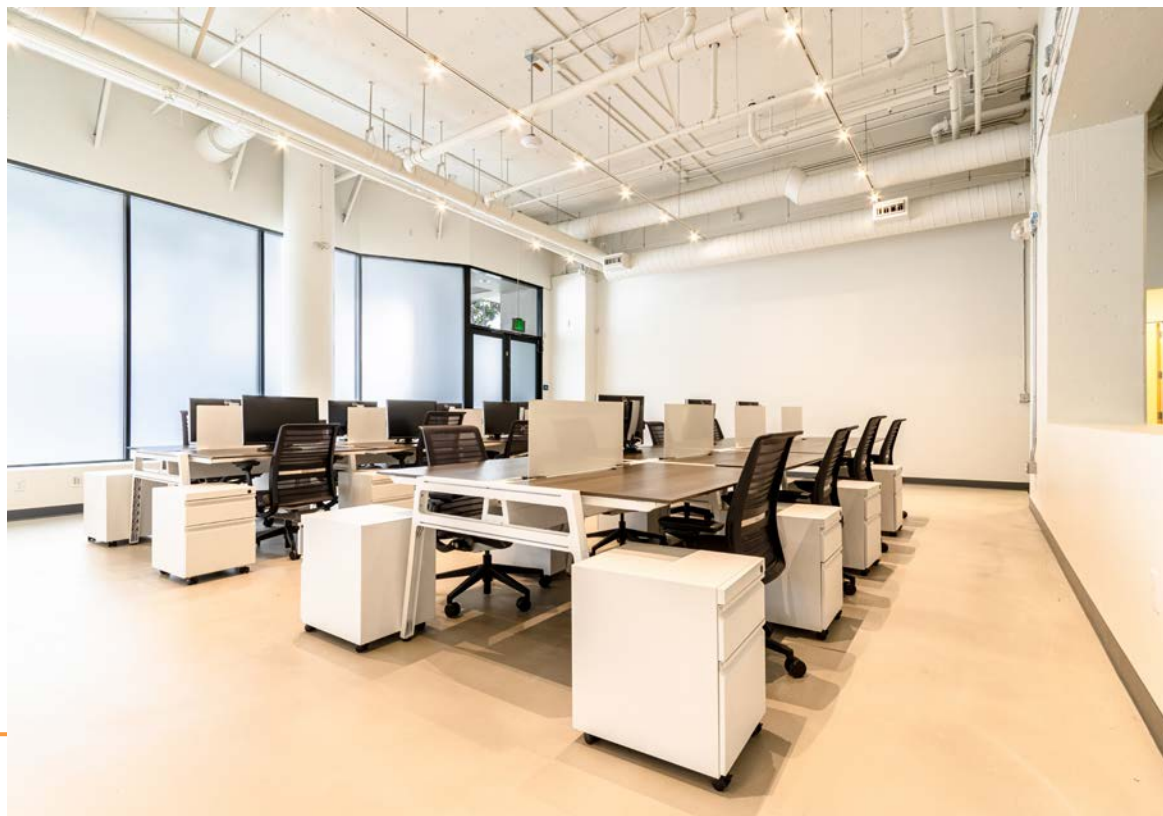
Negotiable

### AVAILABLE

Immediately

## BUILDING ATTRIBUTES

- + Ground Floor Open Plan Office or Retail Space
- + 13'-14' Exposed Ceilings
- + One (1) Large Board Room
- + Four (4) Conference Rooms / Offices
- + Five (5) Call Rooms
- + Kitchenette & Two (2) Restrooms
- + Parking Garage Onsite
- + Fantastic Location Next to Moscone Center, SF MOMA, Public Transportation & Many Nearby Neighborhood Amenities



# 725 FOLSOM STREET

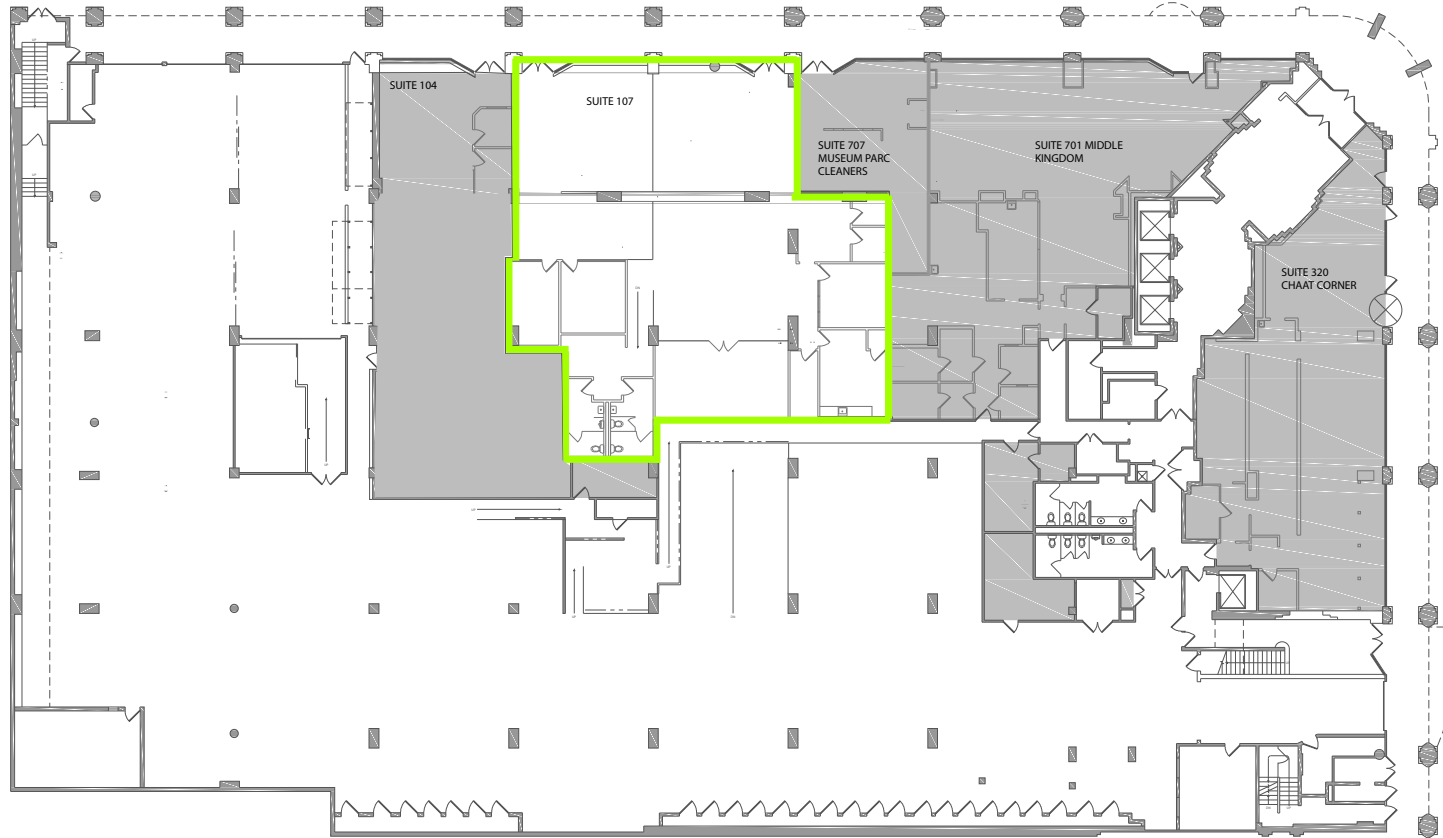


# 725 FOLSOM STREET

## Floor Plan

+/- 7,000 Square Feet

Folsom Street



# 725 FOLSOM STREET

## LOCATION OVERVIEW

Desirable SoMa location, walkable to nearby amenities, public transportation, and to surrounding neighborhoods.



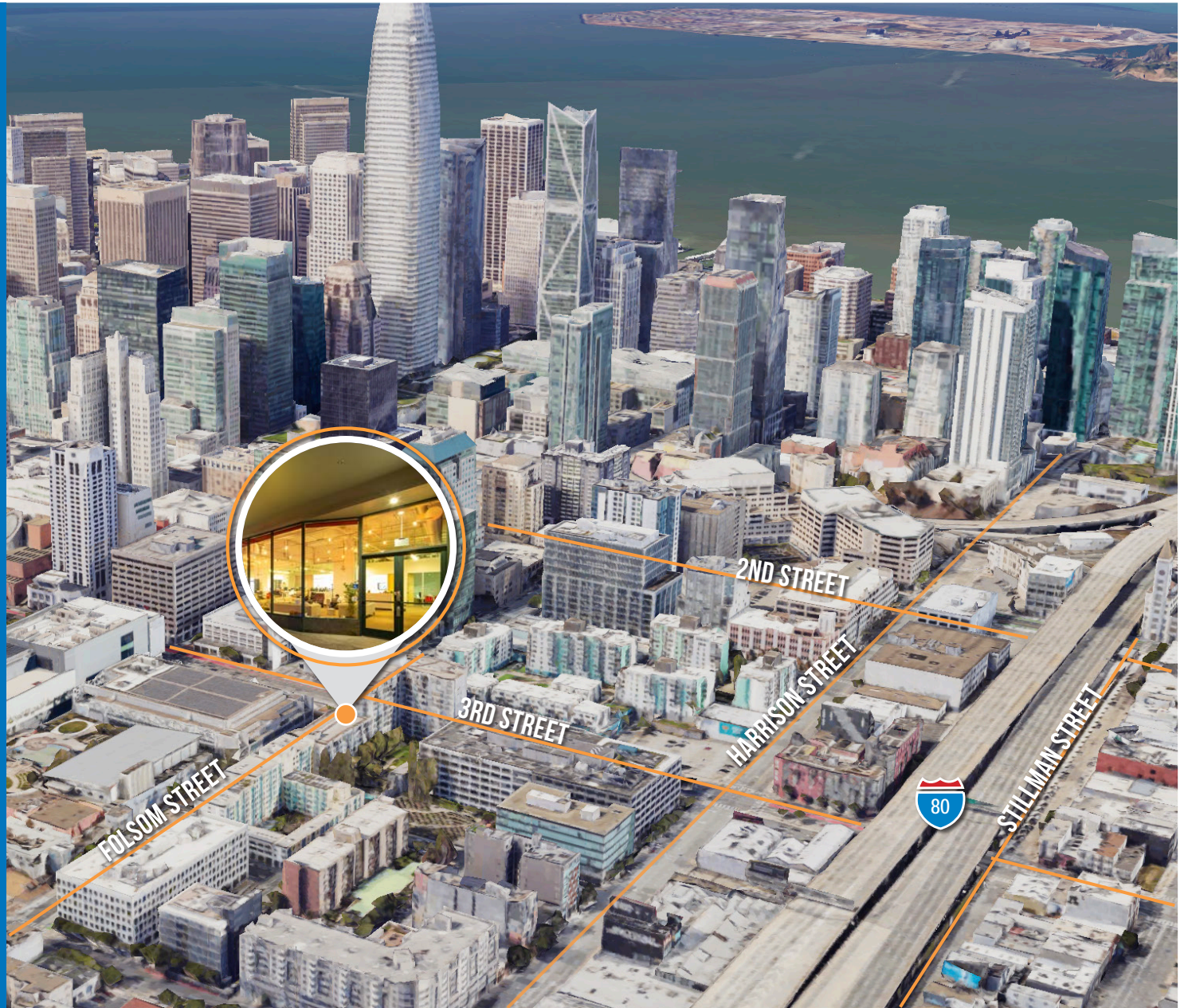
**04 MIN** to 4th & Brannan  
**05 MIN** to Market St  
**10 MIN** to Market St



**02 MIN** to South Park  
**07 MIN** to Oracle Park  
**08 MIN** to Mission District



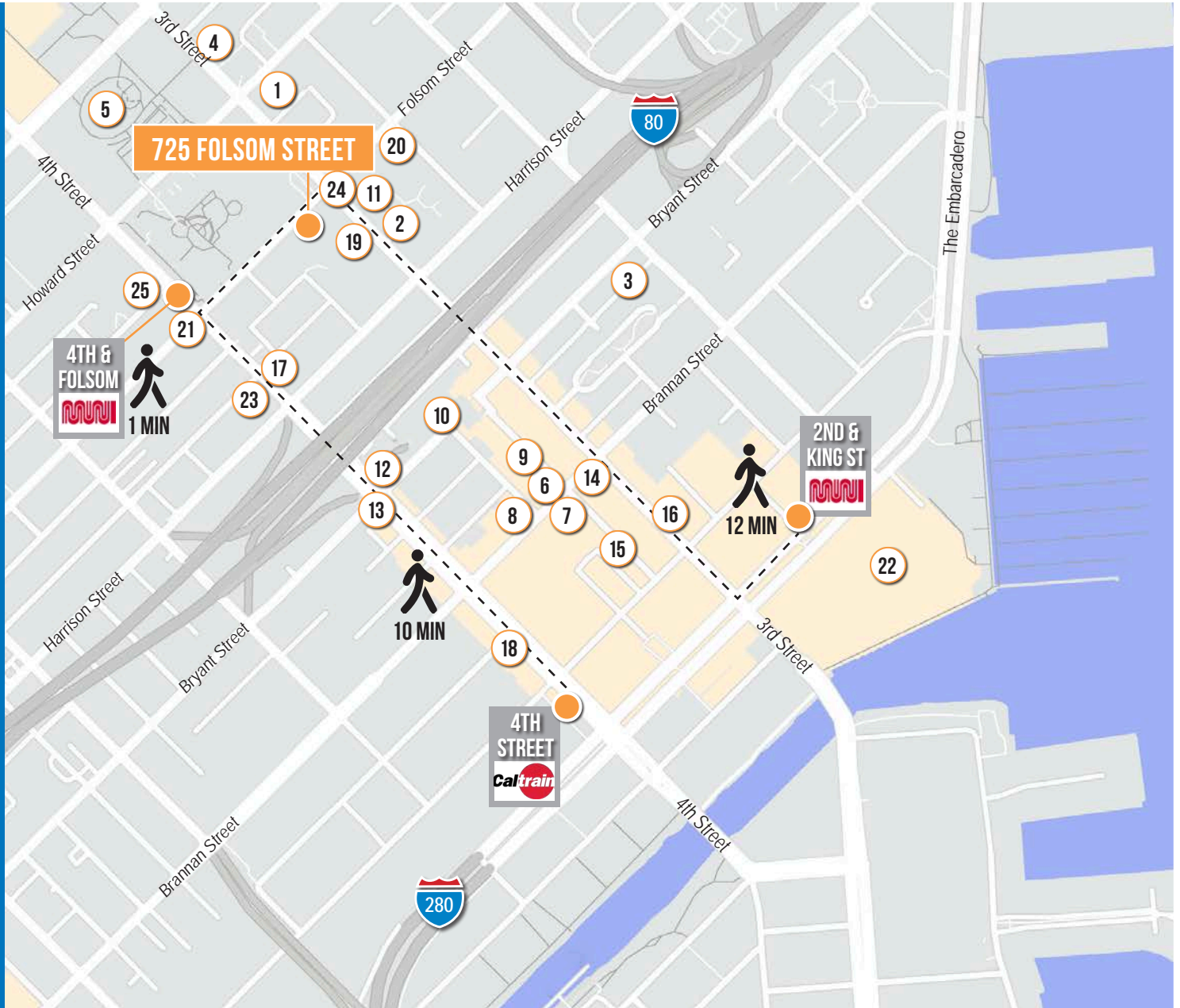
**01 MIN** to 80 On-Ramp  
**10 MIN** to 280 On-Ramp  
**03 MIN** to 101 On-Ramp



# 725 FOLSOM STREET

## NEARBY AMENITIES

- 1.....Fogo De Chao
- 2.....Cafe Du Soleil
- 3.....Blue Bottle Coffee
- 4.....SF MOMA
- 5.....Yerba Buena Gardens
- 6.....Brickhouse
- 7.....Wabi-Sabi SF at Soma
- 8.....Alexander's Steakhouse
- 9.....Sun and Moon
- 10.....Black Hammer Brewing
- 11.....Chaat Corner
- 12.....Shell Gas Station
- 13.....The Hotel Utah Saloon
- 14.....Local Tap
- 15.....Little Skillet
- 16.....Alchemist Bar & Lounge
- 17.....Whole Foods Market
- 18.....The UPS Store
- 19.....Crunch Fitness
- 20.....Wine Down
- 21.....Aphotic
- 22.....Oracle Park
- 23.....Delah Coffee
- 24.....Bocado
- 25.....Shelby's Rooftop Bar



# 725 FOLSOM STREET



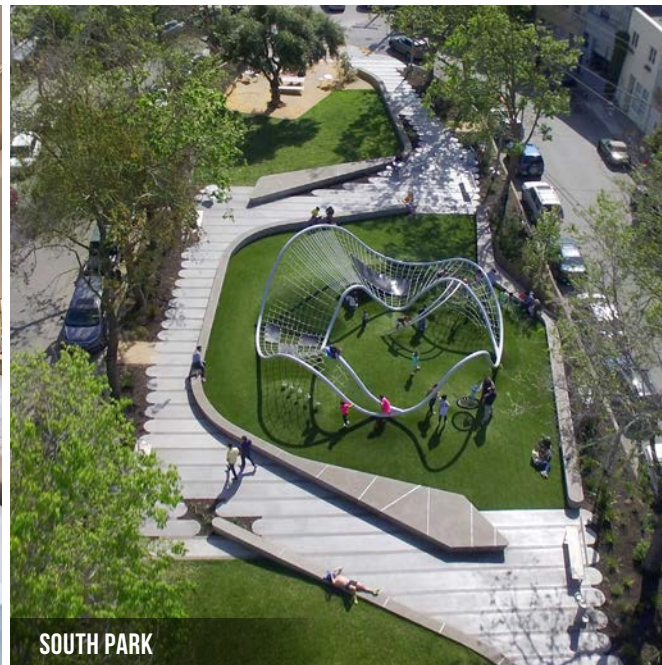
SHELBY'S ROOFTOP BAR



BLUE BOTTLE



WINE DOWN



SOUTH PARK



FOGO DE CHAO

# 725 FOLSOM STREET



Corp. Lic. 01112906  
www.tcpre.com

## ZACH HAUPERT

D 415.539.1121 C 415.812.1219  
zhaupert@tcpre.com DRE # 01822907

## MICHAEL SANBERG

D 415.539.1103 C 415.697.6088  
msanberg@tcpre.com DRE # 01930041

## TREVOR GUDIM

D 415.539.1122 C 858.922.2632  
trevor@tcpre.com DRE # 01979980

This document has been prepared by Touchstone Commercial Partners for advertising and general information only. Touchstone Commercial Partners makes no guarantees, representations or warranties of any kind, expressed or implied, regarding the information including, but not limited to, warranties of content, accuracy and reliability. Any interested party should undertake their own inquiries as to the accuracy of the information. Touchstone Commercial Partners excludes unequivocally all inferred or implied terms, conditions and warranties arising out of this document and excludes all liability for loss and damages arising there from. This publication is the copyrighted property of Touchstone Commercial Partners and/or its licensor(s). ©2024. All rights reserved.