

LAND FOR SALE



PROPERTY DESCRIPTION

Quick access to KS-254.

2022 Taxes: \$113.56

Area Neighbors:

Old School Tap House & Social, Outdoor Adventures RV Rentals, NorthStar Comfort Services, Inc., Reyes Trucking Inc., HarmanHuffman Construction Group, and many more.

LOCATION DESCRIPTION

Close to Koch Industries and the new Wichita State University Technology Campus.

Fantastic access to HWY 254, I-135, K-96 and all of Wichita, Newton, Hutchinson, McPherson and surrounding Kansas communities.

Site is ready to build/develop with wonderful visibility.

OFFERING SUMMARY

Sale Price:	\$125,000
Lot Size:	1.13 Acres
Zoning:	C-3 Heavy Commercial

DEMOGRAPHICS	1 MILE	5 MILES	10 MILES
Total Households	257	16,641	112,525
Total Population	709	40,555	252,043
Average HH Income	\$92,216	\$80,061	\$68,808

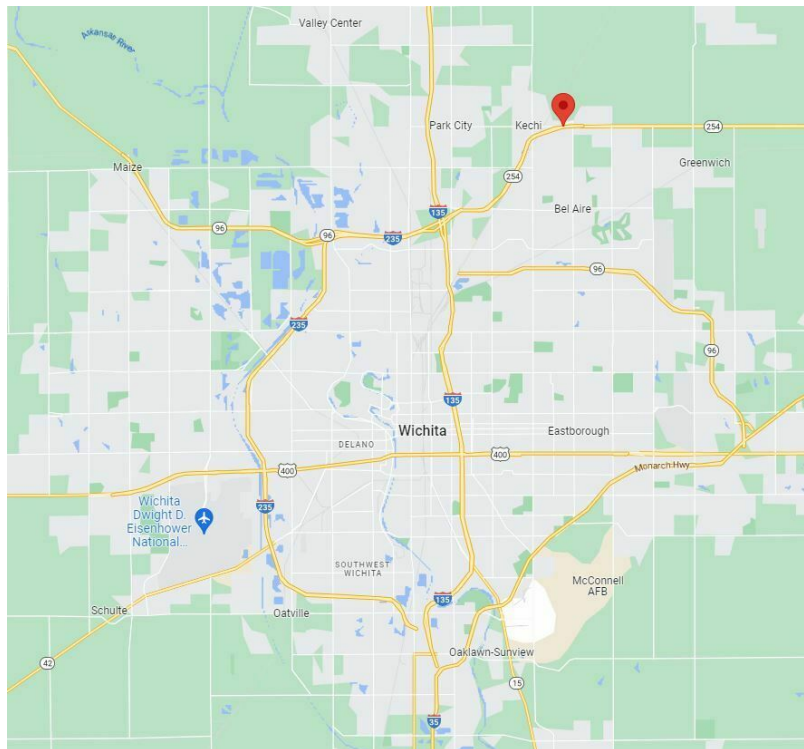
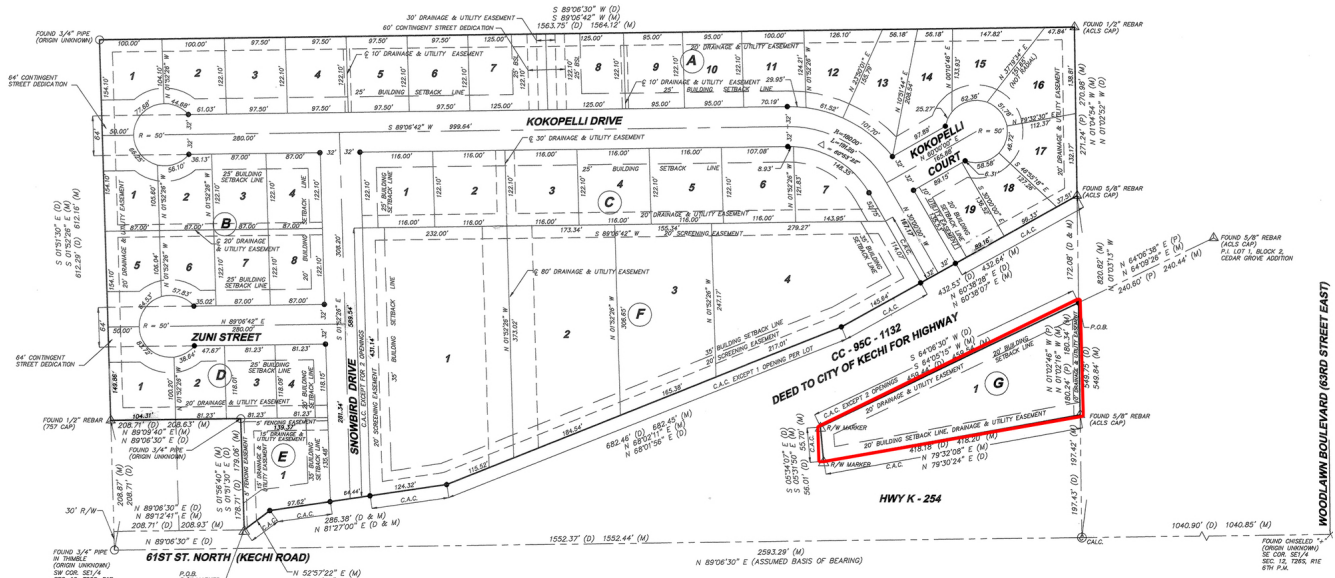
David Leyh, CCIM
Associate Broker
O: 316.262.2442
dleyh@ccim.net

LAND FOR SALE

SNOWBIRD PARK ADDITION

KECHI, SEDGWICK COUNTY, KANSAS

SE1/4, SEC. 12, T 26 S, R 1 E



David Leyh, CCIM
Associate Broker
O: 316.262.2442
dleyh@ccim.net