

# Chandler Medical Center

 Dignity Health.  
Chandler Regional  
Medical Center



## Medical/Office For Lease

655 S Dobson Rd, Bldg A  
Chandler, AZ 85224

**Vince Femiano**  
Senior Vice President  
602.954.7559  
[vince.femiano@transwestern.com](mailto:vince.femiano@transwestern.com)

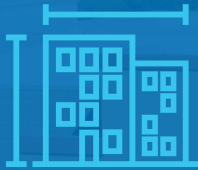
**Kevin Smigiel**  
Vice President  
602.265.5502  
[kevin.smigiel@transwestern.com](mailto:kevin.smigiel@transwestern.com)

  
**TRANSWESTERN**  
REAL ESTATE  
SERVICES

# Chandler Medical Center



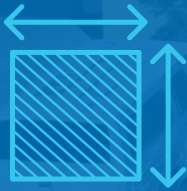
**\$26.00/SF**  
NNN Lease Rate



**±22,591 SF**  
Total Building Size



**2001**  
Year Built




**±2,847 SF**  
Suite 103 Available

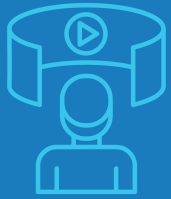


**PAD**  
City of Chandler Zoning

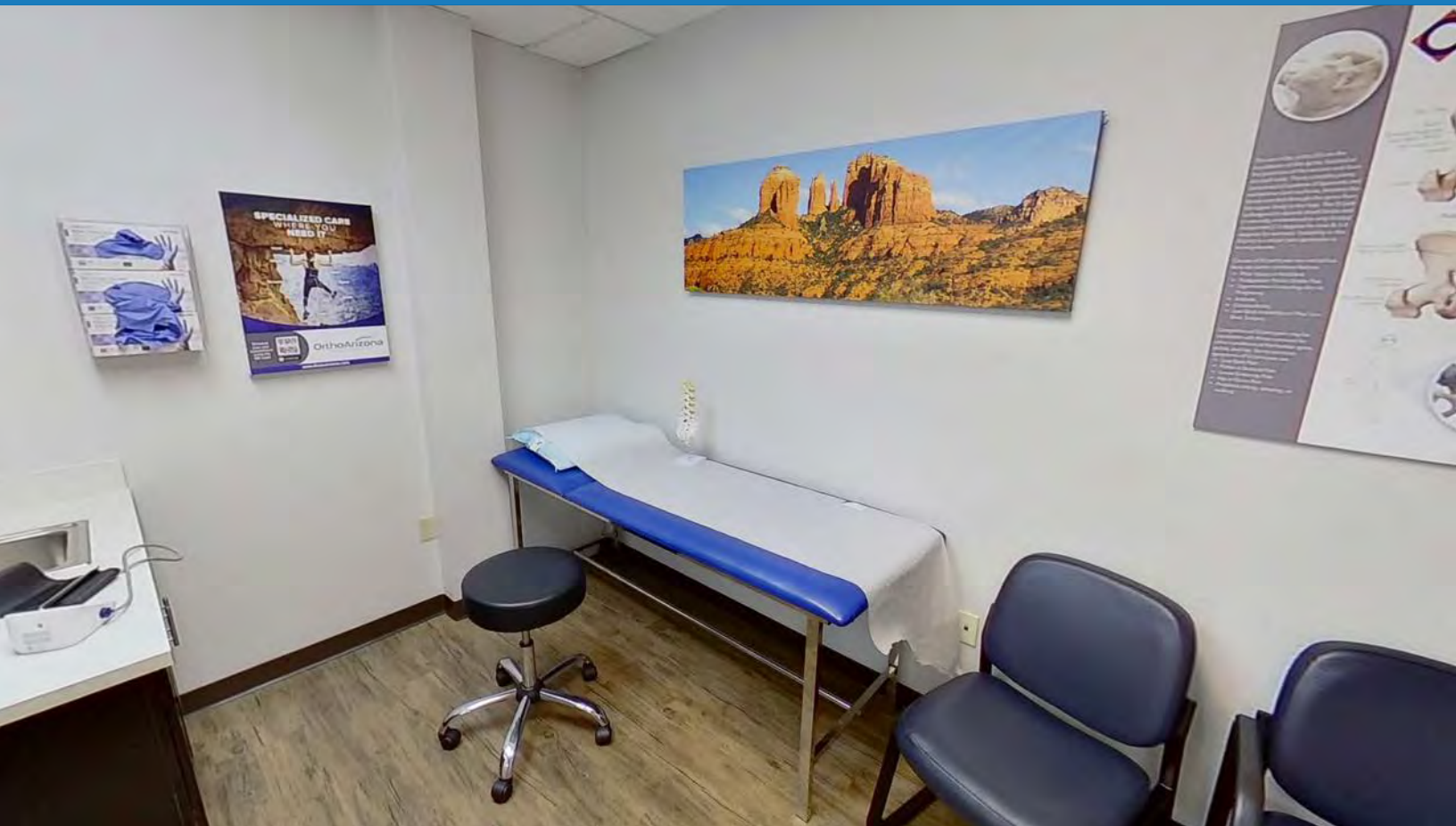




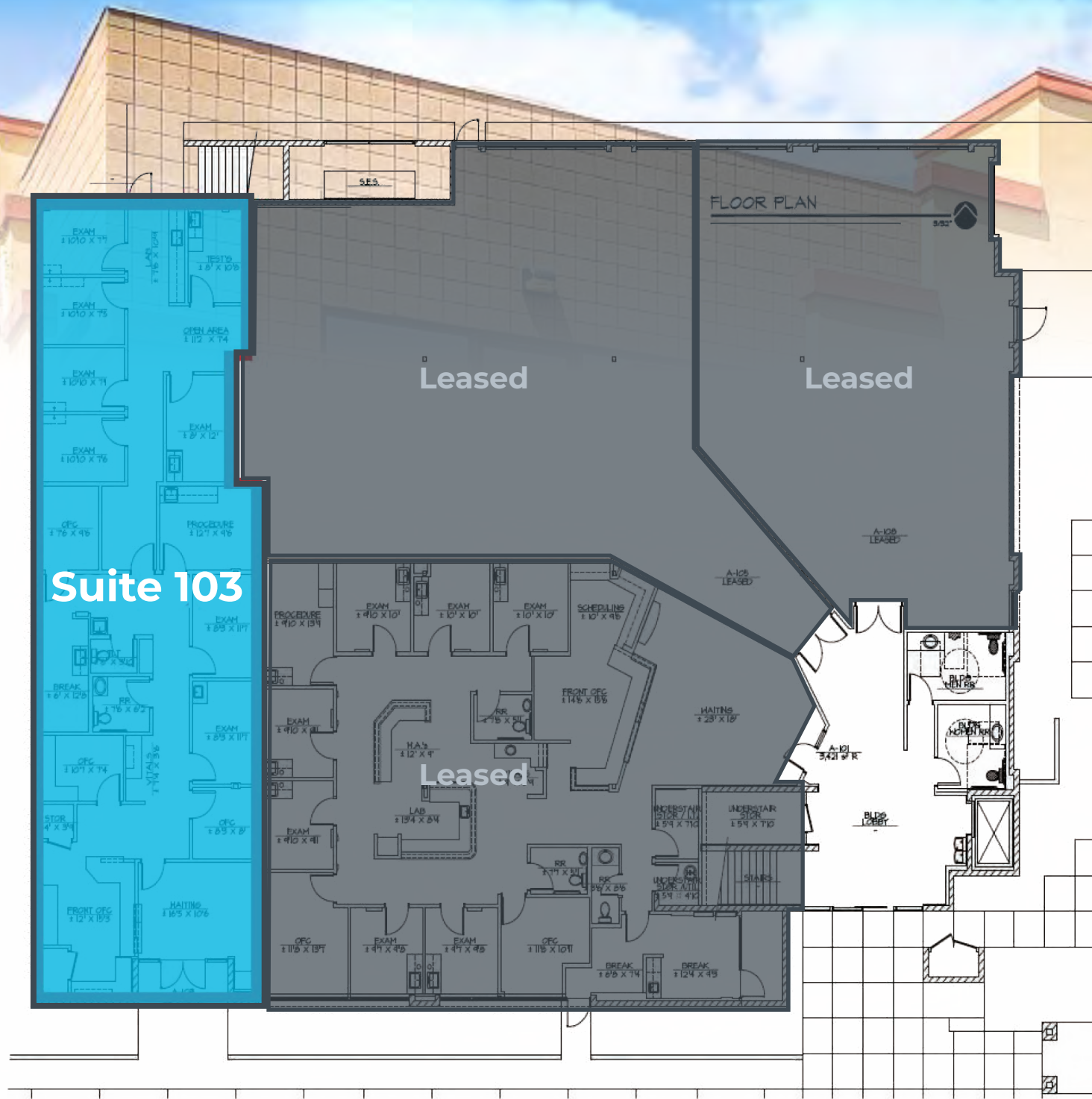
  
**TRANSWESTERN**  
REAL ESTATE  
SERVICES

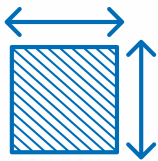
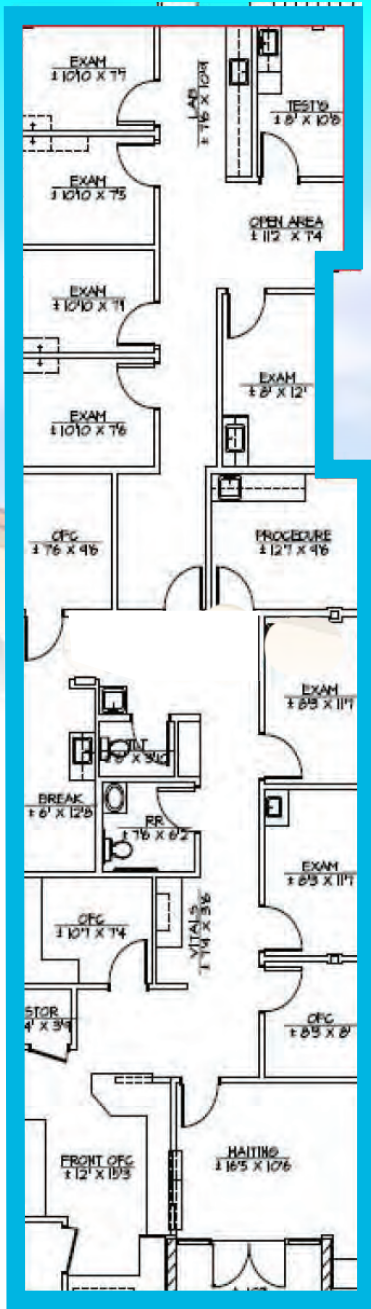


**TAKE THE VIRTUAL TOUR**



# Floor Plan | Suite 103





**Suite 103**  
**±2,847 SF**



**\$26.00/SF**  
**Lease Rate**



W FRYE RD

Dignity Health

Chandler Regional Medical Center



SimonMed Imaging  
See Tomorrow Today®



655 S DOBSON RD

S DOBSON RD



= Medical Group



Vince Femiano • Senior Vice President • 602.954.7559 • vince.femiano@transwestern.com

Kevin Smigiel • Vice President • 602.265.5502 • kevin.smigiel@transwestern.com



Chandler Unified School District



**TRANSWESTERN**  
REAL ESTATE SERVICES

Chandler Medical Dental Center

W FAIRVIEW WAY



# Location Overview

## RETAIL

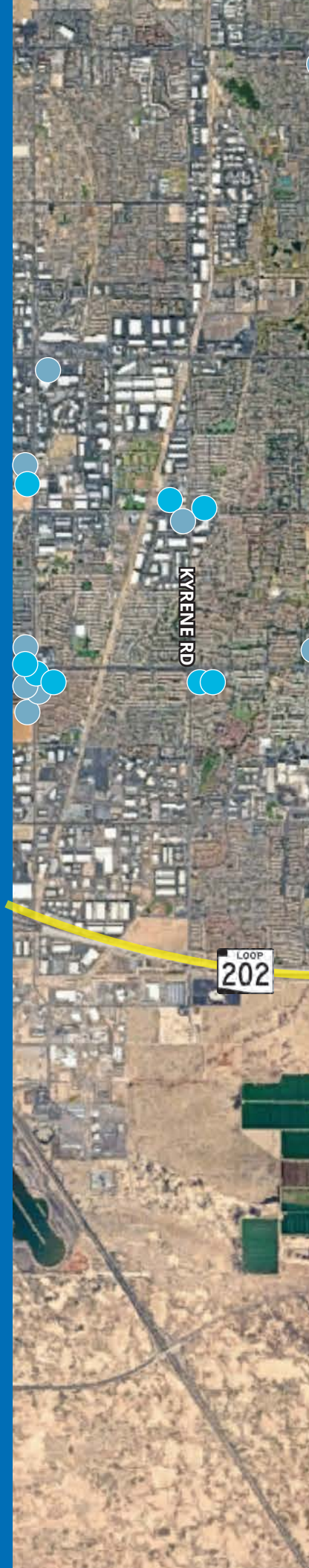
Chandler Fashion Center	WinCo Foods	Kohls	Walmart Supercenter	Fry's Marketplace	Hobby Lobby
Costco	Target	Lowe's	T.J. Maxx	Ross Dress for Less	The Home Depot
Trader Joe's	Planet Fitness	Safeway	Petsmart	Whole Foods Market	Nordstrom Rack
Intel - Chandler Campus	Ice Den	Goodwill	Sam's Club	San Marcos Golf Course	REI
JCPenney	AJ's	Urban Air	Petco	Sportsman's Warehouse	HomeGoods
PGA Tour Superstore	Ace Hardware	AMF Lanes	IKEA	Basha's	Intel - Ocotillo Campus

## DINING

Cooper's Hawk Winery	Firebirds Wood Fired Grill	Benihana	Hop Social Grill	Hash Kitchen	The Sicilian Butcher
In-N-Out Burger	Salad and Go	First Watch	Postino	The Porch	Thirsty Lion
The Cheesecake Factory	Chili's Grill & Bar	Olive Garden	Cheddar's Scratch Kitchen	Starbucks	Black Bear Diner
Pita Jungle	The Hub Grill & Bar	Over EAsy	Red Lobster	Outback Steakhouse	Fleming's
Barro's Pizza	Raising Canes	IHOP	Cornish Pasty	Native Grill & Wings	Amici Pizza

## HEALTHCARE

Chandler Regional Medical Center	Banner Ocotillo Medical Center	East Valley Dermatology Center	Phoenix Children's Pediatrics	HonorHealth Cancer Center	Phoenix ER
Banner Desert Medical Center	Dignity Health	Optum Primary Care	Village Medical	Tutera Medical	Presidio Primary Care





BASELINE RD

ALMA SCHOOL RD



WARNER RD

LOOP 101

DOBSON RD

RAY RD

ARIZONA 87

MCQUEEN RD

CHANDLER BLVD

FRYE RD



655 S DOBSON RD

LOOP 202

GERMANN RD

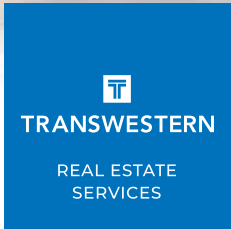
QUEEN CREEK RD



 **Dignity Health.**  
Chandler Regional  
Medical Center



# Chandler Medical Center



**Vince Femiano**  
Senior Vice President  
602.954.7559  
vince.femiano@transwestern.com

**Kevin Smigiel**  
Vice President  
602.265.5502  
kevin.smigiel@transwestern.com

The information provided herein was obtained from sources believed reliable; however, Transwestern makes no guarantees, warranties or representations as to the completeness or accuracy thereof. The presentation of this property is submitted subject to errors, omissions, change of price or conditions, prior sale or lease, or withdrawal without notice. Copyright © 2025 Transwestern.