



Crossroads - Parcel 5 | Visalia, CA

Property For Sale

1005 N Demaree St
Visalia, California 93291
O | 559.754.3020
F | 559.429.4016
www.mdgre.com

GRAHAM | **& ASSOCIATES**

Jim Abercrombie
Lic# 01917959
www.mdgre.com

to learn more, visit: www.mdgre.com

PROPERTY DETAILS

Address: Crossroads - Parcel 5 | Visalia, CA

APN: 085-080-048

Square Feet Available: 15,070 +/- Sq. Ft.

Zoning Commercial

Sales Price \$250,000.00

Additional Comments:

Open lot for sale on busy Mineral King Ave, situated between Demaree and Akers. This commercial lot is well located, positioned near many businesses, has easy on and off access to Highway 198 and many more advantageous qualities. Please call for further details.



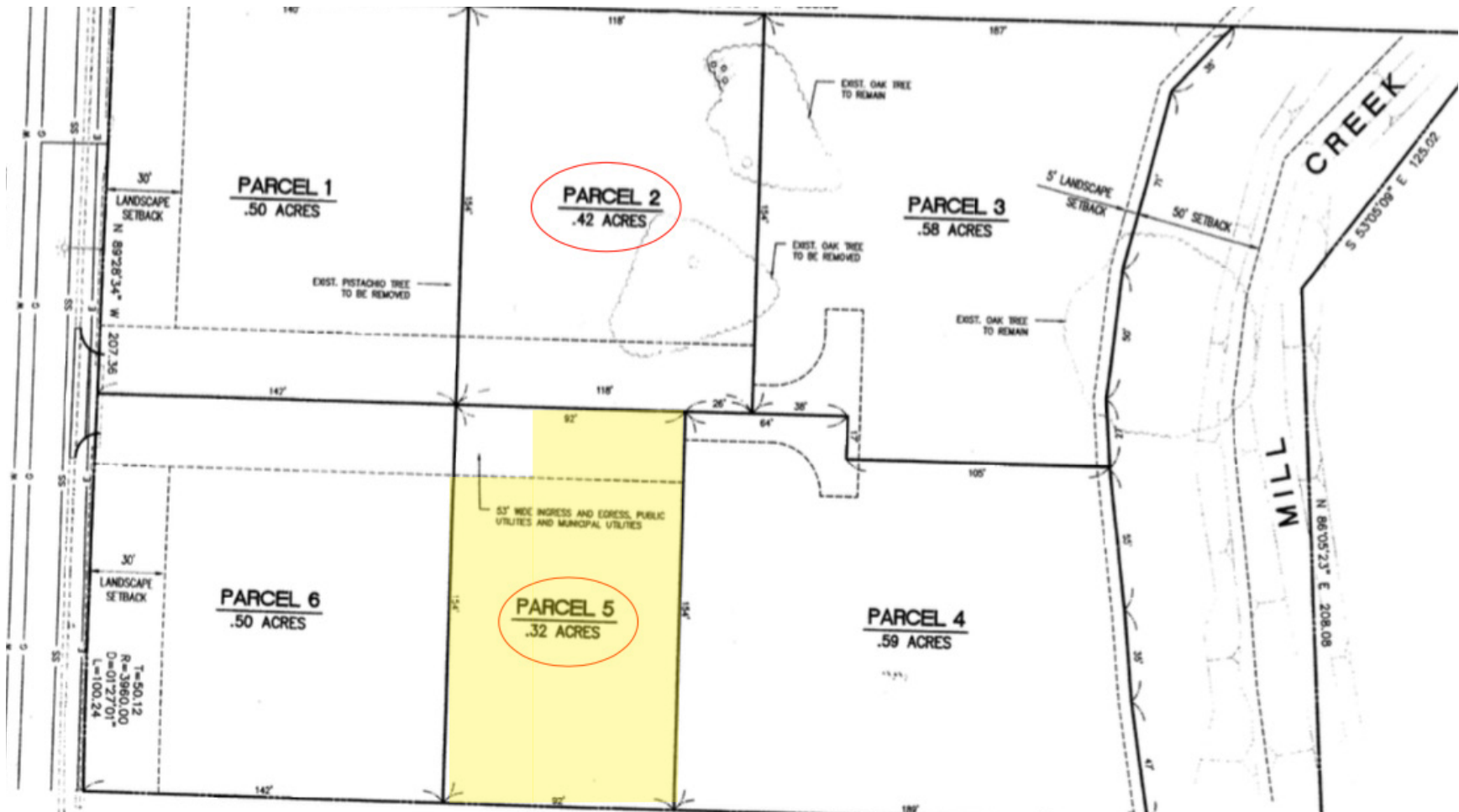
Contact Broker:
Jim Abercrombie
Lic# 01917959

to learn more, visit: www.mdgre.com

3714 West Mineral King Avenue
Visalia, California 93291
O | 559.754.3020

PLEASE NOTE: ALL INFORMATION AND REPRESENTATION MADE HEREIN, WHILE NOT GUARANTEED, HAVE BEEN SECURED FROM SOURCES WE BELIEVE TO BE RELIABLE, HOWEVER, THEY ARE NOT WARRANTED BY MATT GRAHAM & ASSOCIATES AND ARE SUBJECT TO CHANGE WITHOUT NOTICE.

SITE MAP



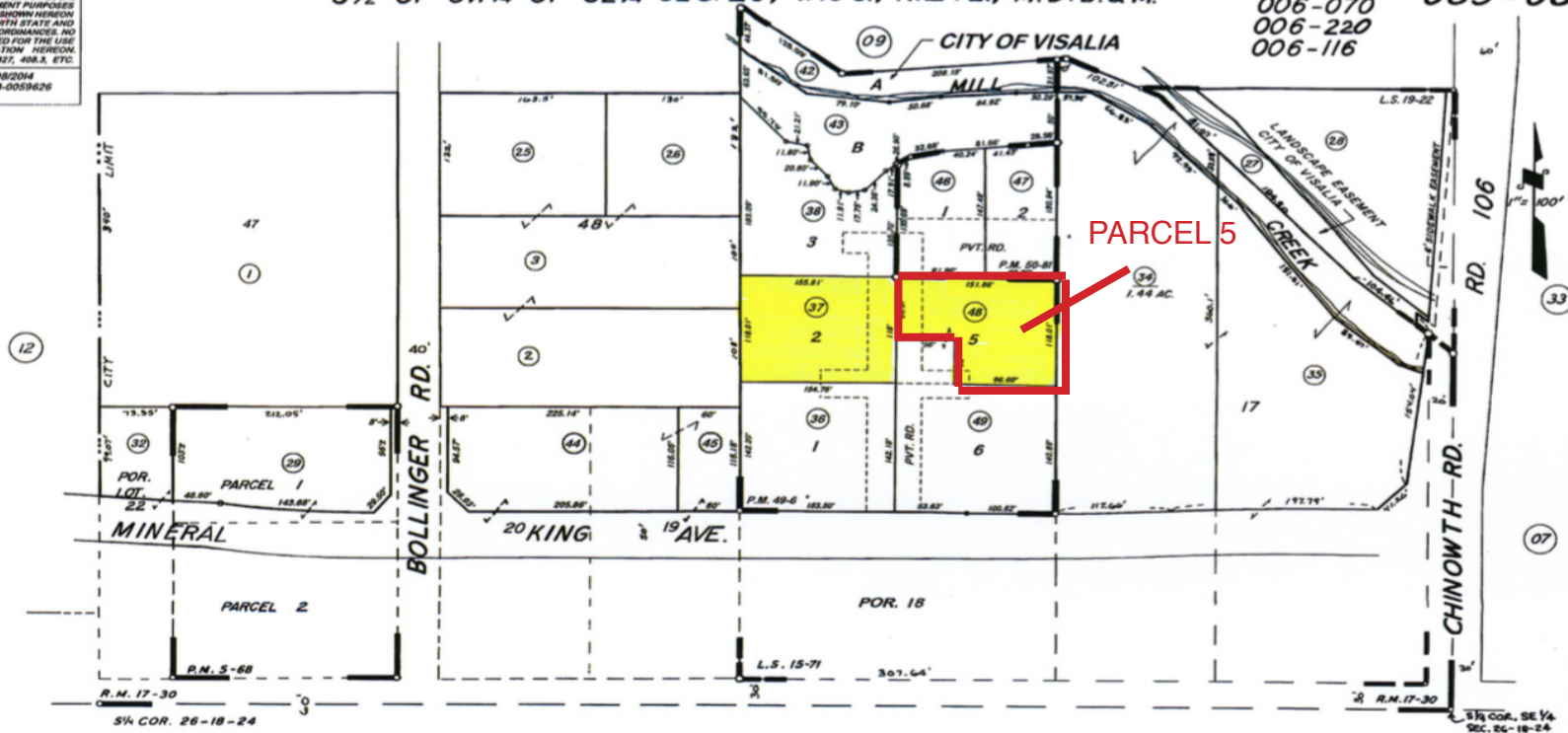
PLEASE NOTE: ALL INFORMATION AND REPRESENTATION MADE HEREIN, WHILE NOT GUARANTEED, HAVE BEEN SECURED FROM SOURCES WE BELIEVE TO BE RELIABLE, HOWEVER, THEY ARE NOT WARRANTED BY MATT GRAHAM & ASSOCIATES AND ARE SUBJECT TO CHANGE WITHOUT NOTICE.

TAX MAP

DISCLAIMER
 HIS MAP WAS PREPARED FOR LOCAL PROPERTY ASSESSMENT PURPOSES ONLY. THE PARCELS SHOWN HEREON MAY NOT COMPLY WITH STATE AND LOCAL SUBDIVISION ORDINANCES AND LIABILITY IS ASSUMED FOR THE USE OF THE INFORMATION HEREON.
 REVISIONS: 12/08/2014
 REASON: 2014-0059626
 AD TECH: NFL

1/2 OF SW 1/4 OF SE 1/4 SEC. 26, T.18 S., R.24 E., M.D.B.&M.

TAX CODE AREA
 006-070 085-08
 006-220
 006-116



RECORD OF SURVEY, L.S. 19-24 (E HWY 198)
 POR. FULGHAM HWY. ACRES TRACT NO. 2, R.M. 17-30
 PARCEL MAP 468, P.M. 5-68
 RECORD OF SURVEY, L.S. 15-71
 RECORD OF SURVEY, L.S. 19-22
 PARCEL MAP NO. 4801, P.M. 49-6
 PARCEL MAP NO. 4976, P.M. 50-81

ST. HWY. 198

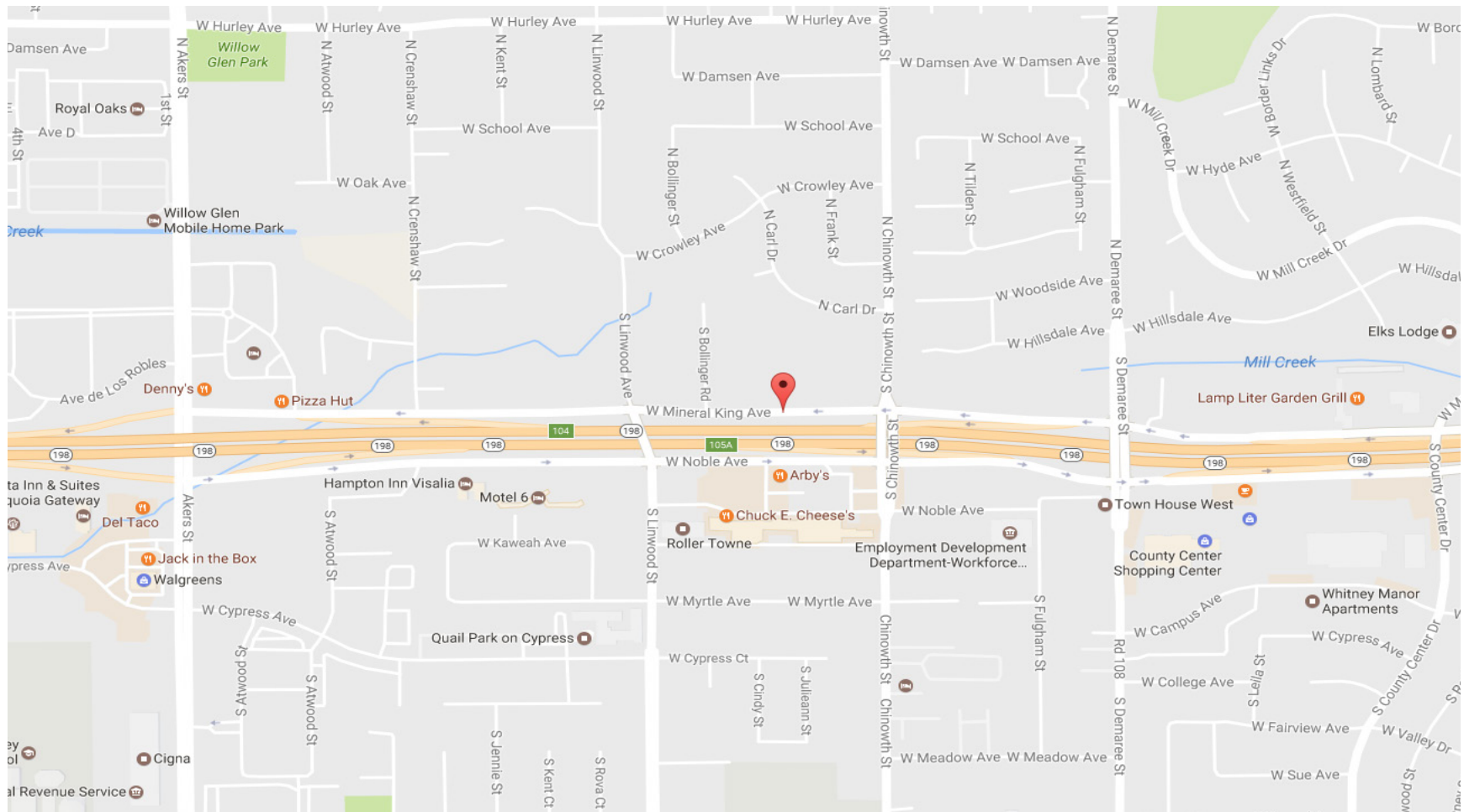
CITY OF VISALIA

ASSESSOR'S MAPS BK. 85. PG. 08
 COUNTY OF TULARE, CALIF.

BK. 87

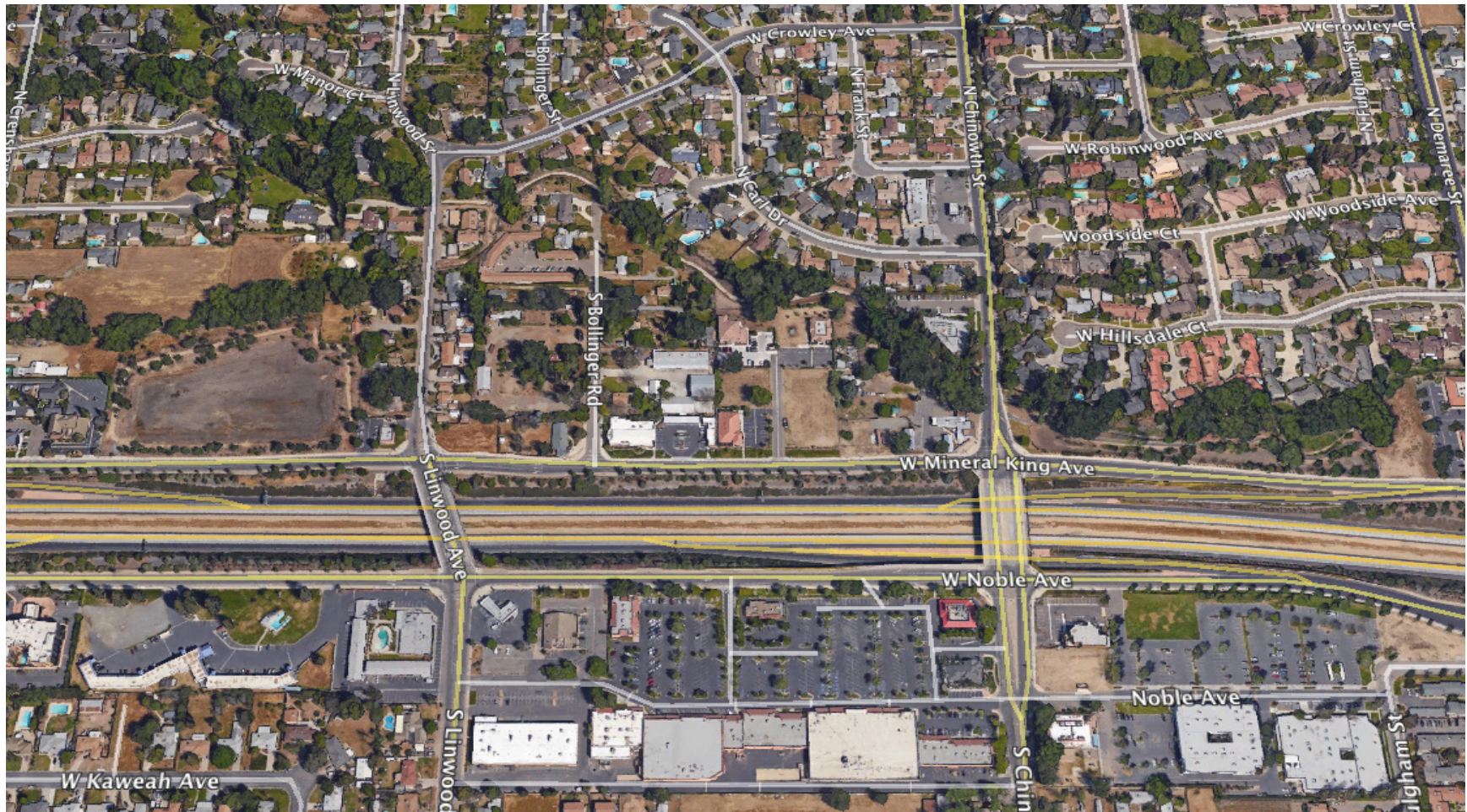
NOTE - ASSESSOR'S BLOCK NUMBERS SHOWN IN ELLIPSES

LOCATION MAP



PLEASE NOTE: ALL INFORMATION AND REPRESENTATION MADE HEREIN, WHILE NOT GUARANTEED, HAVE BEEN SECURED FROM SOURCES WE BELIEVE TO BE RELIABLE, HOWEVER, THEY ARE NOT WARRANTED BY MATT GRAHAM & ASSOCIATES AND ARE SUBJECT TO CHANGE WITHOUT NOTICE.

PROPERTY LAYOUT



PLEASE NOTE: ALL INFORMATION AND REPRESENTATION MADE HEREIN, WHILE NOT GUARANTEED, HAVE BEEN SECURED FROM SOURCES WE BELIEVE TO BE RELIABLE, HOWEVER, THEY ARE NOT WARRANTED BY MATT GRAHAM & ASSOCIATES AND ARE SUBJECT TO CHANGE WITHOUT NOTICE.

PROPERTY PHOTOS



PLEASE NOTE: ALL INFORMATION AND REPRESENTATION MADE HEREIN, WHILE NOT GUARANTEED, HAVE BEEN SECURED FROM SOURCES WE BELIEVE TO BE RELIABLE, HOWEVER, THEY ARE NOT WARRANTED BY MATT GRAHAM & ASSOCIATES AND ARE SUBJECT TO CHANGE WITHOUT NOTICE.