

4260 Glendale Milford Rd

Aeropointe Medical Building

Blue Ash, OH 45242

**Available
For Lease**

Medical Office Space

Lower Level \$14.00 Gross 1,551 SF

Suite 101 Available Q1 26 4,256 SF

Suite 202 \$13.50 NNN 3,606 SF



[Click for Suite 202 Video](#)

Ryan Van Dulman
Bob Fessler

NABergman



+1 513 769 1700



bergmancommercial.com



4695 Lake Forest Drive, Suite 100, Cincinnati, OH 45242

4260 Glendale Milford Rd

4260 Glendale Milford Road is located within the Aeropointe Medical Building, a highly visible property in Blue Ash directly across from Madtree Brewing and just minutes from Summit Park, the city's premier 130-acre community destination featuring walking and biking trails, playgrounds, sports fields, restaurants, year-round events, and an observation tower that attracts visitors from across the region. This central location provides excellent visibility and accessibility, with immediate connections to I-71, I-275, and Ronald Reagan Cross County Highway, and is surrounded by a strong mix of medical offices, corporate employers, and lifestyle amenities, making it an ideal spot for healthcare practices seeking both convenience and high-profile exposure.

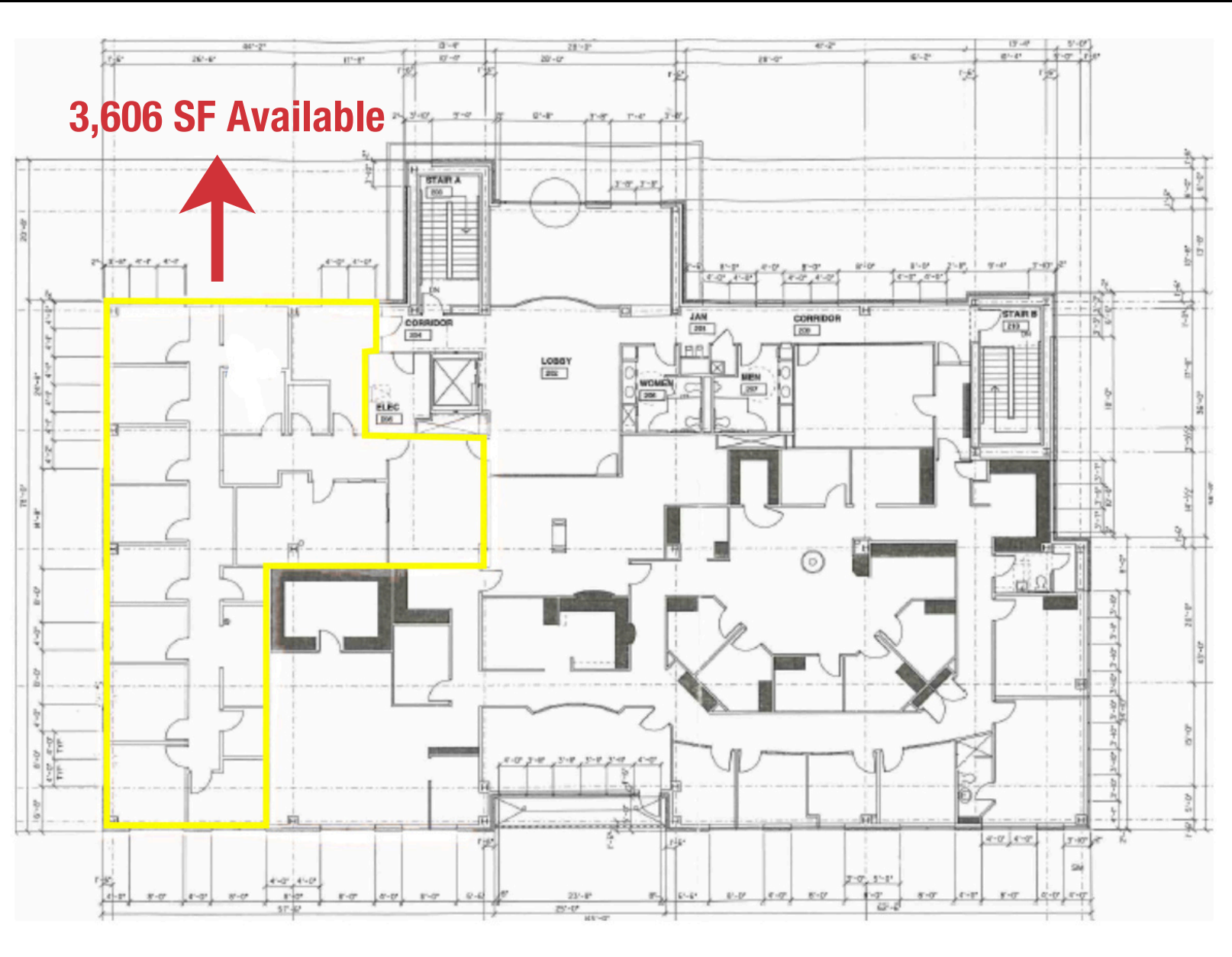
Highlights:

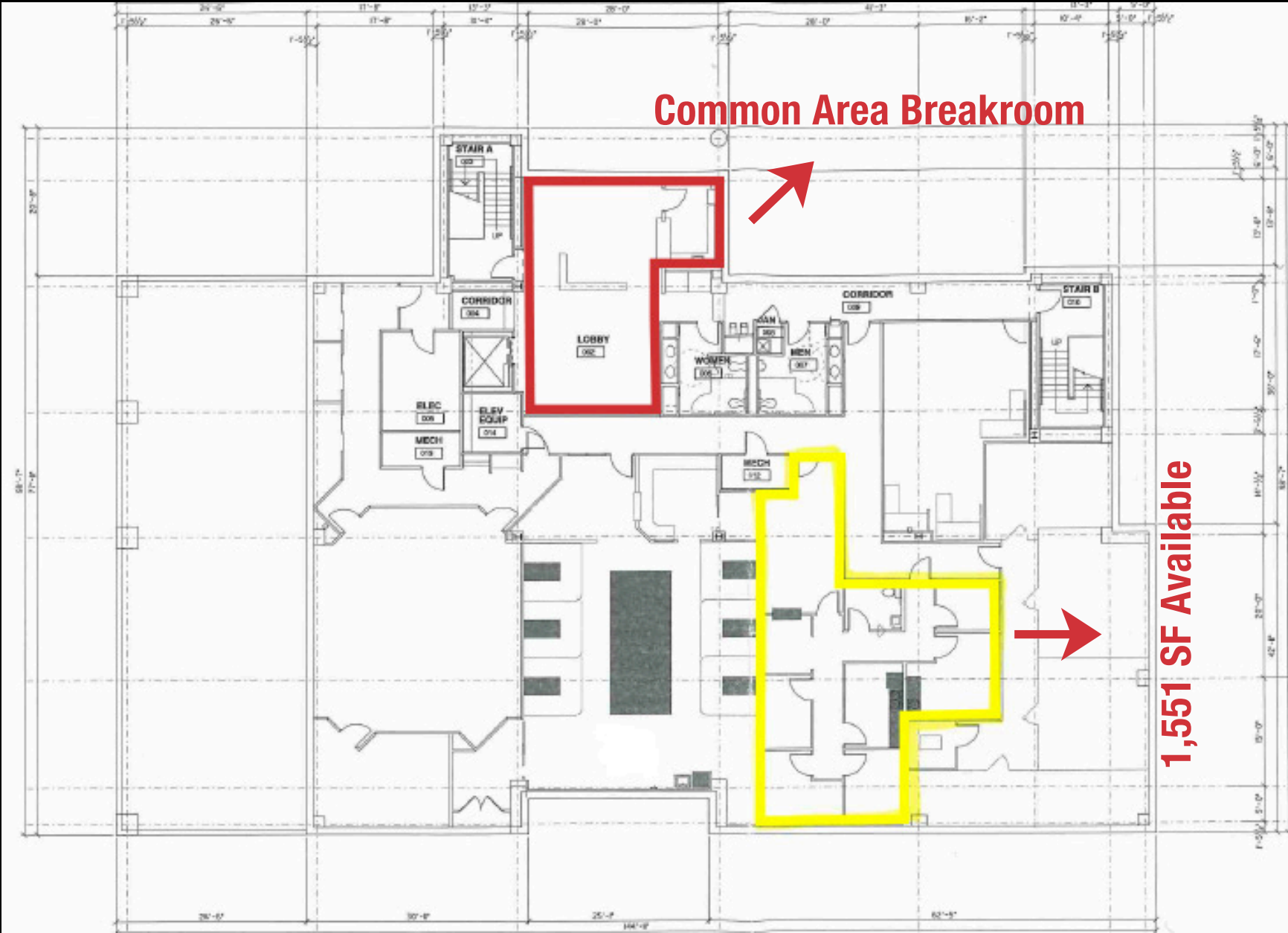
- Across the street from Madtree Brewing and near Summit Park
- Multiple medical and professional suites available
- Strong visibility and signage potential
- Convenient access to I-71, I-275, and Ronald Reagan Highway
- Surrounded by established medical providers, corporate offices, and lifestyle amenities
- Ample parking available on-site







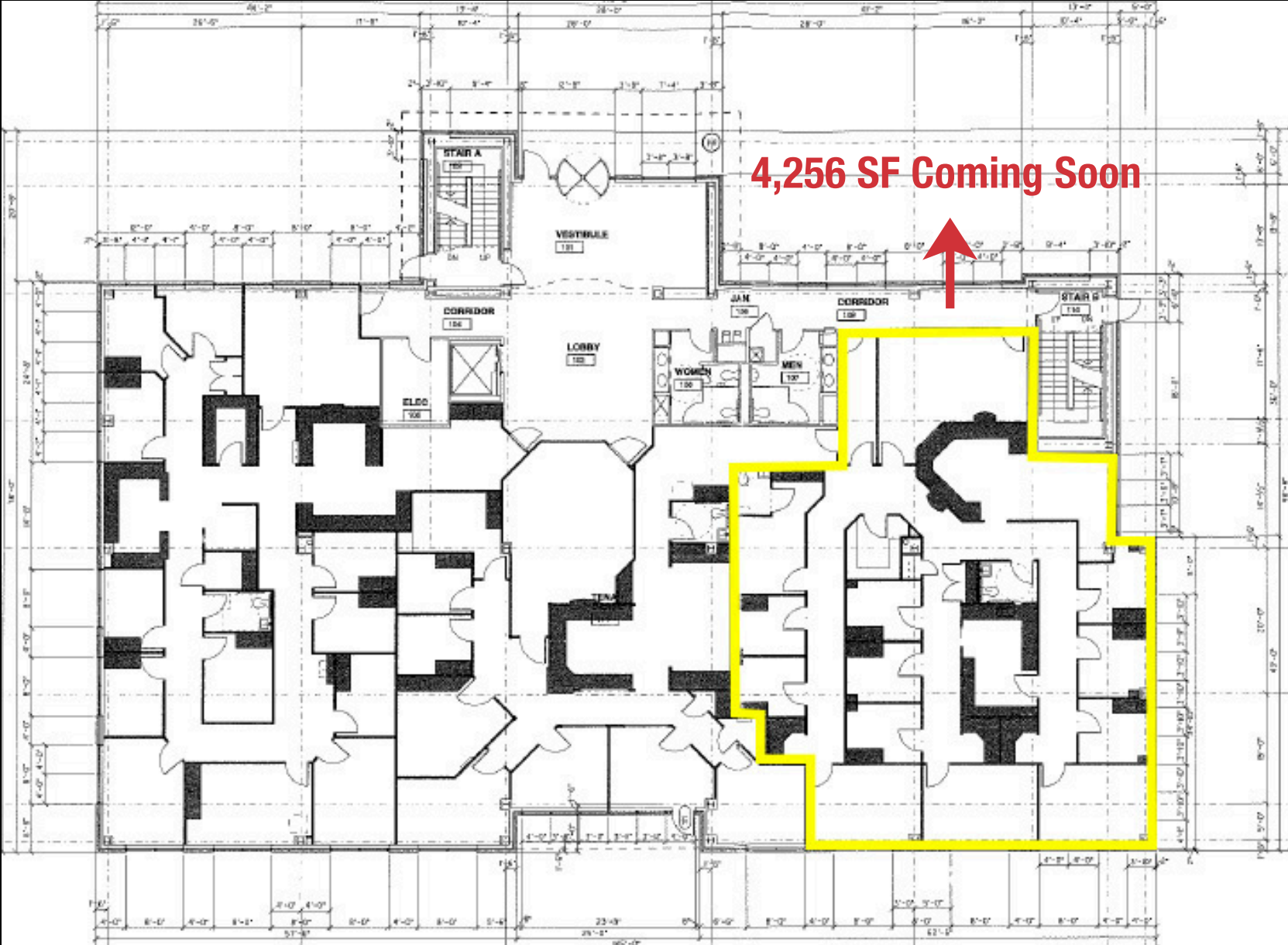








Suite 101 Available Q1 2026



For Lease | 4260 Glendale Milford Rd



THANK YOU

STAY CONNECTED



Ryan Van Dulman

rvandulman@bergman-group.com
513.377.0440

Bob Fessler

bfessler@bergman-group.com
513.322.6312