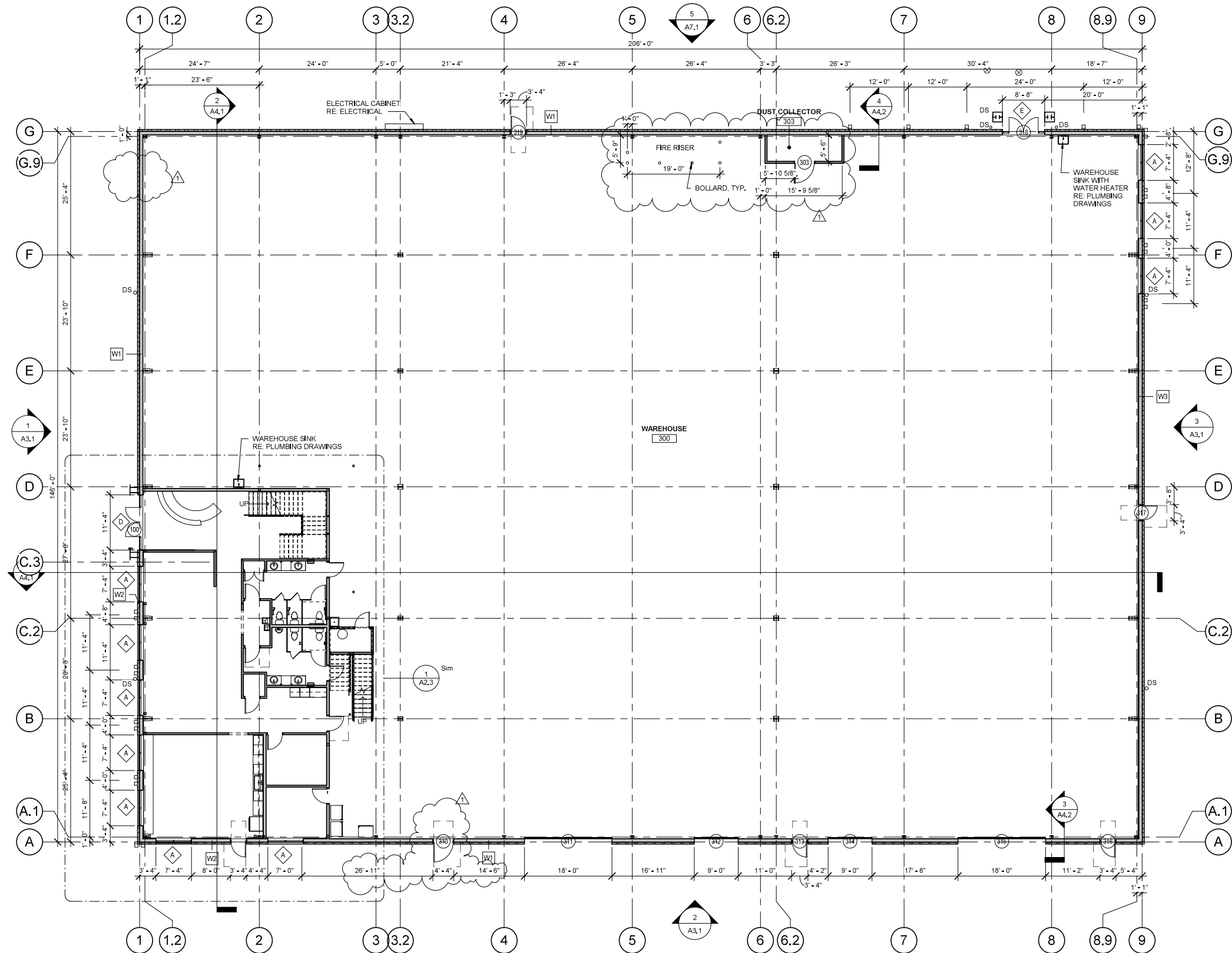


C:\Users\wilkinson\Grey Wolf Arch Dropbox\projects\579 Colorado Yurt\REV\1579\_Colorado Yurt - No Plasters.rvt  
9/8/2021 5:21:05 PM



# 1 FIRST FLOOR PLAN

A2.1 3/32" = 1'-0"

## FLOOR PLAN GENERAL NOTES

- CONTRACTOR TO IMMEDIATELY NOTIFY THE ARCHITECT OF ANY DISCREPANCIES, ERRORS, OR CONFLICTS DISCOVERED IN THE DRAWINGS, CONTRACTOR TO VERIFY ALL DIMENSIONS AND CONDITIONS PRIOR TO START OF WORK.
- USE 5/8" WR G.B. (FIBEROCK) @ WET SIDE OF PARTITION.
- ALL STUDS ARE 16" O.C. U.N.O.
- ALL DIMENSIONS ARE TO FACE OF METAL STUD U.N.O.
- PROVIDE CONTROL JOINTS IN EXPOSED CONCRETE FLOOR IN REQUIRED DISTANCES, RE. STRUCT.
- ALL INTERIOR DOORS ARE LOCATED 4" FROM ADJACENT WALL ON HINGE SIDE U.N.O.
- PROVIDE DOUBLE 20 GA. STUDS (MIN.) AT ALL DOOR JAMBS.
- COORDINATE LOCATION & TYPE OF KNOX BOX WITH LOCAL FIRE DEPARTMENT, PORTABLE FIRE EXTINGUISHERS SHALL BE FURNISHED BY G.C. AS REQUIRED BY THE INTERNATIONAL FIRE CODE.
- ALL FULL HEIGHT WALLS SHALL HAVE SLIP TRACK AT STRUCTURE ABOVE.
- ALL EXTERIOR WALLS TO BE W1 U.N.O.
- ALL INTERIOR WALLS TO BE W1 U.N.O.
- PROVIDE CONTROL JOINT IN DRYWALL SPACE PER MANUF. RECOMMENDATION.
- RED CHALK NOT ALLOWED ANYWHERE ON THIS PROJECT. SCRUB CONC. FLOOR TO REMOVE RELEASING AGENT AND LAYOUT MARKS ON THE FLOOR, PROVIDE 'BURKE' HONEY COLORED EPOXY PATCH AT ALL FORM HOLES, SPALLED CONC. FLOOR SHRINKAGE CRACKS AND SAW CUT JOINT OVERCUT IN THE SLAB. FLOOR SAND EPOXY TO SMOOTH FINISH. WHERE SPALLING OR CHIPPING HAS OCCURRED AT SLAB COLD JOINT OR SAW CUT CONTROL JOINTS, SAW CUT SURFACE BACK TO SPALL POINT, FILL WITH 'MM-80' AND RE-SAW JOINT.
- PROVIDE 1/8" TOOLED EDGE AT ALL CONCRETE SLAB CONSTRUCTION JOINTS AND COLD JOINTS.
- PAINT ALL EXPOSED EXTERIOR CONDUITS, PIPES AND OTHER EQUIPMENTS TO MATCH ADJACENT WALL.
- MOUNT FIRE EXTINGUISHERS ON SIDE OF COLUMN, VERIFY LOCATION & QUANTITY OF F.E.'S W/ FIRE DEPARTMENT

## PARTITION TYPE

- W1 TYP. EXTERIOR WALL @ WAREHOUSE:  
8" GRTS W/ R-13 CAVITY INSULATION W/ 1/2 SHEATHING, AIR INFILTRATION BARRIER, AND METAL SIDING ON EXTERIOR SIDE, AT BASE OF WALL, 8" INTEGRAL COLORED CMU BLOCK VENEER WITH 1" AIR SPACE.
- W2 TYP. EXTERIOR WALL @ OFFICES:  
8" GRTS W/ R-13 CAVITY INSULATION W/ 1/2 SHEATHING, AIR INFILTRATION BARRIER, AND METAL SIDING ON EXTERIOR SIDE, AT BASE OF WALL, 8" INTEGRAL COLORED CMU BLOCK VENEER WITH 1" AIR SPACE, ON INTERIOR, 7/8" FURRING CHANNEL WITH 5/8" GYP BOARD FULL HEIGHT OF WALL.
- W3 THIS EXTERIOR WALL @ EAST WALL ONLY: UL No. 263  
8" GRTS W/ R-13 CAVITY INSULATION W/ 1/2 SHEETROCK FIRECODE CORE GYPSUM SHEATHING (OR EQ), AIR INFILTRATION BARRIER, AND METAL SIDING ON EXTERIOR SIDE, AT BASE OF WALL, 8" INTEGRAL COLORED CMU BLOCK VENEER WITH 1" AIR SPACE, ON INTERIOR, 7/8" HAT CHANNEL @ 24" O.C. WITH 1/2" FIRECODE CORE GYP BOARD FULL HEIGHT OF WALL.
- W4 TYP. INTERIOR WALL (NOT KEYS ON PLANS):  
3-5/8" 25 GA METAL STUDS @ 16" O.C. W/ 5/8" GYP. BOARD ON BOTH SIDES WITH SOUND INSULATION, HEIGHT 6" ABOVE CEILING.
- W5 TYP. INTERIOR PLUMBING WALL:  
6" 25 GA METAL STUDS @ 16" O.C. W/ 5/8" GYP. BOARD ON BOTH SIDES & SOUND INSULATION, HEIGHT 6" ABOVE CEILING.  
NOTE: USE 5/8" WR G.B. (FIBEROCK) ON THE WET SIDE OF PARTITION OR 5/8" CEMENT BOARD UNDER WALL TILES
- W6 TYP. FULL HT. INTERIOR WALL:  
6" 20 GA METAL STUDS @ 16" O.C. W/ 5/8" GYP. BOARD ON BOTH SIDES & SOUND INSULATION, HEIGHT TO THE ROOF DECK ABOVE, (VERIFY GAUGE OF METAL STUDS W/ MANUFACTURER), PROVIDE SLIP TRACK AT STRUCTURE ABOVE, RE: 4/A7.3
- W7 1 HR INTERIOR WALL @ WAREHOUSE STAIR ONLY: UL NO. U419  
3-5/8" 25 GA METAL STUDS @ 16" O.C. W/ 5/8" TYPE X GYP. BOARD ON BOTH SIDES, HEIGHT TO UNDERSIDE OF STAIR.
- W8 1 HR INTERIOR WALL @ WAREHOUSE STAIR ONLY: UL NO. U419  
6" 20 GA METAL STUDS @ 16" O.C. W/ 5/8" TYPE X GYP. BOARD ON BOTH SIDES.

GREY WOLF ARCHITECTURE

COLORADO YURT COMPANY

1227 MAYFLY DR.  
MONTROSE, CO



ALL DRAWN AND WRITTEN INFORMATION APPEARING HEREIN IS COPYRIGHTED INFORMATION AND SHALL NOT BE DUPLICATED, DISCLOSED, OR OTHERWISE REPRODUCED WITHOUT THE WRITTEN CONSENT OF GREY WOLF ARCHITECTURE

PROJECT NUMBER		21-579
DRAWN BY		JH
CHECKED BY		KWH
DATE	ISSUE	REV. #
05.11.21	PROGRESS	
05.21.21	90% SET	
05.26.21	PERMIT	
09.08.21	ASB 002	1

OVERALL 1ST FLOOR PLAN

A2.1



ALL DRAWN AND WRITTEN INFORMATION  
APPEARING HEREIN IS COPYRIGHTED  
INFORMATION AND SHALL NOT BE  
DUPLICATED, DISCLOSED, OR OTHERWISE  
DUPLICATED WITHOUT THE WRITTEN  
CONSENT OF GREY WOLF ARCHITECTURE

PROJECT NUMBER	21-579
DRAWN BY	Author
CHECKED BY	KWH

DATE	ISSUE	REV. #
05.11.21	PROGRESS	
05.21.21	90% SET	
05.28.21	PERMIT	
09.05.21	ASB 002	1

OVERALL 2ND FLOOR  
PLAN

## A2.2

## FLOOR PLAN GENERAL NOTES

1. CONTRACTOR TO IMMEDIATELY NOTIFY THE ARCHITECT OF ANY DISCREPANCIES, ERRORS, OR CONFLICTS DISCOVERED IN THE DRAWINGS. CONTRACTOR TO VERIFY ALL DIMENSIONS AND CONDITIONS PRIOR TO START OF WORK.
2. USE 5/8" WR G.B. (FIBEROCK) @ WET SIDE OF PARTITION.
3. ALL STUDS ARE 16" O.C., U.N.O.
4. ALL DIMENSIONS ARE TO FACE OF METAL STUD U.N.O.
5. PROVIDE CONTROL JOINTS IN EXPOSED CONCRETE FLOOR IN REQUIRED DISTANCES, RE. STRUCT.
6. ALL INTERIOR DOORS ARE LOCATED 4" FROM ADJACENT WALL ON HINGE SIDE U.N.O.
7. PROVIDE DOUBLE 20 GA. STUDS (MIN.) AT ALL DOOR JAMBS.
8. COORDINATE LOCATION & TYPE OF KNOX BOX WITH LOCAL FIRE DEPARTMENT. PORTABLE FIRE EXTINGUISHERS SHALL BE FURNISHED BY G.C. AS REQUIRED BY THE INTERNATIONAL FIRE CODE.
9. ALL FULL HEIGHT WALLS SHALL HAVE SLIP TRACK AT STRUCTURE ABOVE.
10. ALL EXTERIOR WALLS TO BE W1 U.N.O.
11. ALL INTERIOR WALLS TO BE W4 U.N.O.
12. PROVIDE CONTROL JOINT IN DRYWALL SPACE PER MANUF. RECOMMENDATION.
13. RED CHALK NOT ALLOWED ANYWHERE ON THIS PROJECT. SCRUB CONC. FLOOR TO REMOVE RELEASING AGENT AND LAYOUT MARKS ON THE FLOOR. PROVIDE "BURKE" HONEY COLORED EPOXY PATCH AT ALL FORM HOLES. SPALLED CONC. FLOOR SHRINKAGE CRACKS AND SAW CUT JOINT OVERCUT IN THE SLAB. FLOOR SAND EPOXY TO SMOOTH FINISH. WHERE FEASIBILITY OF CHIPPING HAS OCCURRED AT SLAB COLD JOINT OR SAW CUT CONTROL JOINTS: SAW CUT SURFACE BACK TO SPALL POINT. FILL WITH "MM-80" AND RE-SAW JOINT.
14. PROVIDE 1/8" TOOLED EDGE AT ALL CONCRETE SLAB CONSTRUCTION JOINTS AND COLD JOINTS.
15. PAINT ALL EXPOSED EXTERIOR CONDUITS, PIPES AND OTHER EQUIPMENTS TO MATCH ADJACENT WALL.
16. MOUNT FIRE EXTINGUISHERS ON SIDE OF COLUMN. VERIFY LOCATION & QUANTITY OF F.E.'S W/ FIRE DEPARTMENT

## | PARTITION TYPE

- W1** **TYP. EXTERIOR WALL @ WAREHOUSE.**  
 6" GRTS W/R-13 CAVITY INSULATION W/ 1/2" SHEATHING, AIR INFLTRATION BARRIER, AND METAL SIDING ON EXTERIOR SIDE, AT BASE OF WALL, 8" INTEGRAL COLORED CMU BLOCK VENEER W/TH 1" AIR SPACE.

**W2** **TYP. EXTERIOR WALL @ OFFICES.**  
 6" GRTS W/R-13 CAVITY INSULATION W/ 1/2" SHEATHING, AIR INFLTRATION BARRIER, AND METAL SIDING ON EXTERIOR SIDE, AT BASE OF WALL, 8" INTEGRAL COLORED CMU BLOCK VENEER W/TH 1" AIR SPACE, ON INTERIOR, 7/8" TYP. FURRING CHANNEL W/TH 5/8" GYP BOARD FULL HEIGHT OF WALL.

**W3** **1HR EXTERIOR WALL @ EAST WALL ONLY : U/L No. 263**  
 6" GRTS W/R-13 CAVITY INSULATION W/1/2" SHEETROCK, PRECOED CORE GYP BOARD, SHEATHING (OR EQ), AIR INFLTRATION BARRIER, AND METAL SIDING ON EXTERIOR SIDE, AT BASE OF WALL, 8" INTEGRAL COLORED CMU BLOCK VENEER W/TH 1" AIR SPACE, ON INTERIOR, 7/8" TYP. CHANNEL @24" O.C. WITH 1/2" PRECODED CORE GYP BOARD FULL HEIGHT OF WALL.

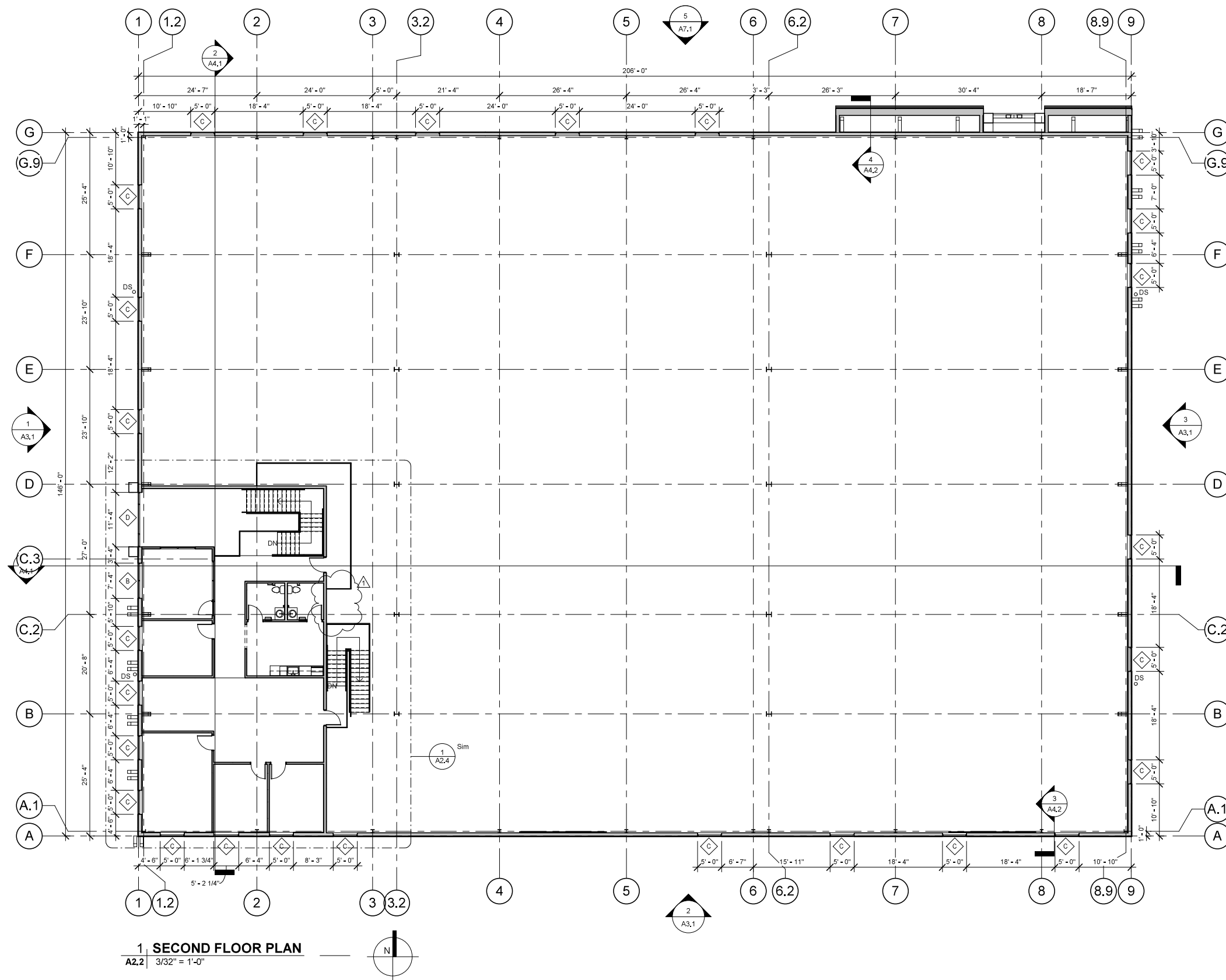
**W4** **TYP. INTERIOR WALL (NOT KEYED ON PLAN):**  
 3-5/8" 25 GA METAL STUDS @ 16" O.C. W/ 5/8" GYP. BOARD ON BOTH SIDES WITH SOUND INSULATION, HEIGHT 8' TYP. ABOVE CEILING,

**W5** **TYP. INTERIOR PLUMBING WALL.**  
 3-5/8" GYP. BOARD @ 16" O.C. W/ 5/8" GYP. BOARD ON BOTH SIDES & SOUND INSULATION, HEIGHT 8' TYP. ABOVE CEILING.  
 NOTE: USE 5/8" W/RT. G.B. (FIBEROCK) ON THE WET SIDE OF PARTITION OR 5/8" CEMENT BOARD UNDER WALL TILES

**W6** **TYP. FULL HT. INTERIOR WALLING:**  
 6" 20 GAMP METAL STUDS @ 16" O.C. W/ 5/8" GYP. BOARD ON BOTH SIDES & SOUND INSULATION, HEIGHT TO THE ROOF DECK ABOVE, (VERIFY GAMP METAL STUDS WITH MANUFACTURER), PROVIDE SLIP TRAC AT STRUCTURE ABOVE, RE. 41A/7.3

**W7** **TYP. INTERIOR WALL @ WAREHOUSE STAR ONLY** U/L No. U419  
 3-5/8" 25 GA METAL STUDS @ 16" O.C. W/ 5/8" TYPE X GYP. BOARD ON BOTH SIDES, HEIGHT TO UNDERSIDE OF STAR.

**W8** **1 HR INTERIOR WALL @ WAREHOUSE STAR ONLY** U/L No. U419  
 8" 20 GA METAL STUDS @ 16" O.C. W/ 5/8" TYPE X GYP. BOARD ON BOTH SIDES.



1	<b>SECOND FLOOR PLAN</b>
A2.2	3/32" = 1'-0"