

Rear—S. Crater Road

Prince George, VA

For Sale



Features

- Located off of South Crater Road
- In close proximity to Bon Secours Hospital, business offices, retail, restaurants and visibility to I-95
- Approximately 36 Acres
- Tax Parcel #330(0A)000-013-0
- Zoned Commercial—Light Industrial
- Land lease is a consideration
- Owner/Agent
- **SALES PRICE—\$720,000**



Specter

Properties, Inc.

P.O. Box 2455
Chesterfield, VA 23832
(804) 777-7070

Principal Broker

Mark B. Specter

mspecter@specterproperties.com

Associate Broker

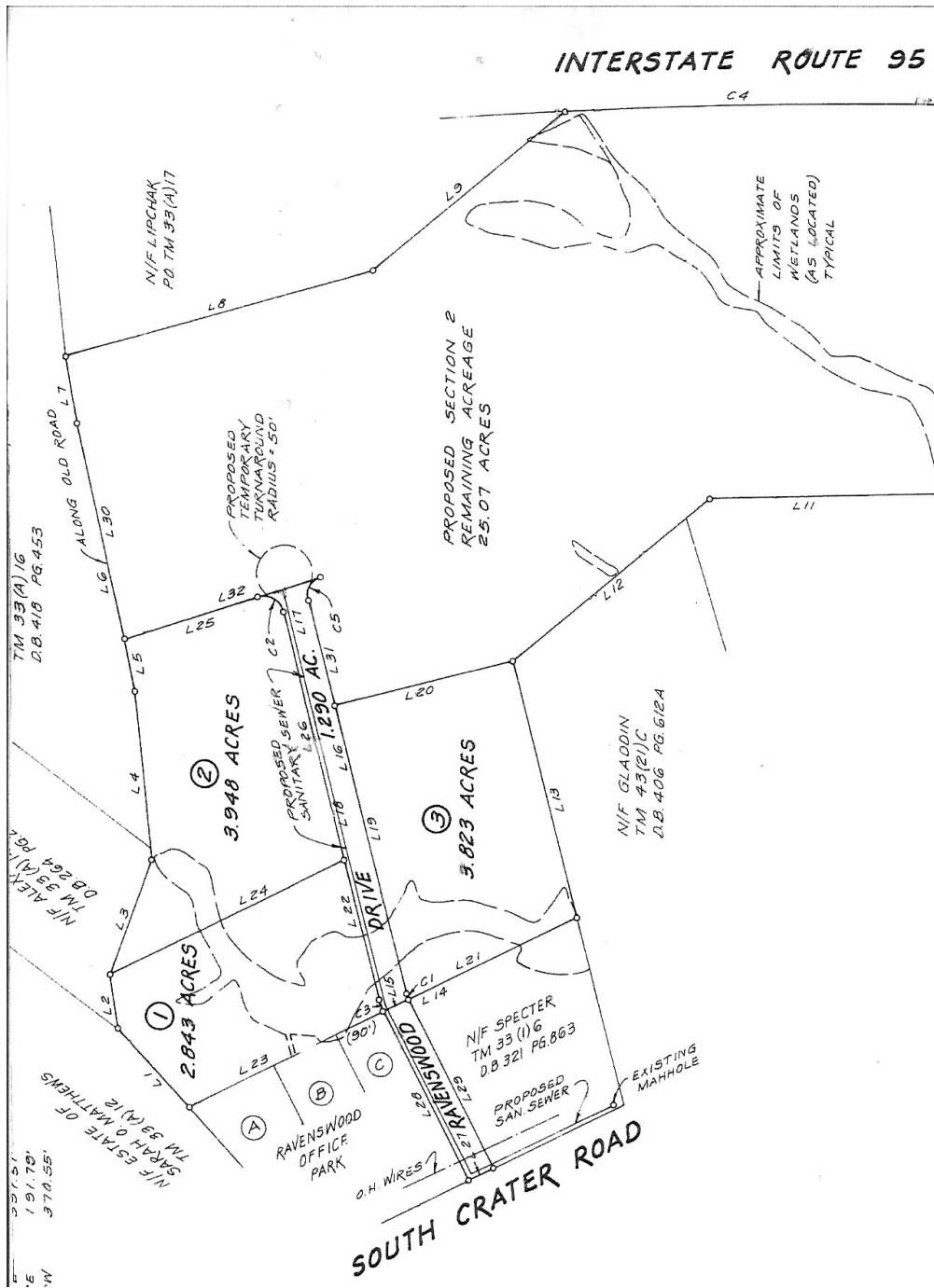
Kevin Y. Specter

kspecter@specterproperties.com

All information furnished to Specter Properties, Inc. is from sources judged to be reliable. However, no warranty or representation is made as to its accuracy or completeness. This applies to all pages within this document.

Rear—S. Crater Road

Prince George, VA



Lots 1-3 were conceptual ideas. The property has not been subdivided so it is one parcel.

All information furnished to Specter Properties, Inc. is from sources judged to be reliable. However, no warranty or representation is made as to its accuracy or completeness. This applies to all pages within this document.