

# 1515 MARKET STREET

1515 Market Street  
Philadelphia, PA 19102



Exclusive Multi-Floor Availability  
with Private Entrance & Lobby

# Reimagined. Reconnected. Ready for What's Next.

Step into the center of it all at 1515 Market Street, where exceptional location meets unparalleled connectivity. This 502,217 square foot office tower stands as the gateway to Philadelphia's Market Street West corridor, offering direct SEPTA concourse access for fast regional connections. Located at Market and 15th, overlooking Dilworth Plaza and City Hall, 1515 Market delivers prestige, accessibility, and flexibility.

## Property highlights



Institutional quality ownership + best-in-class property management



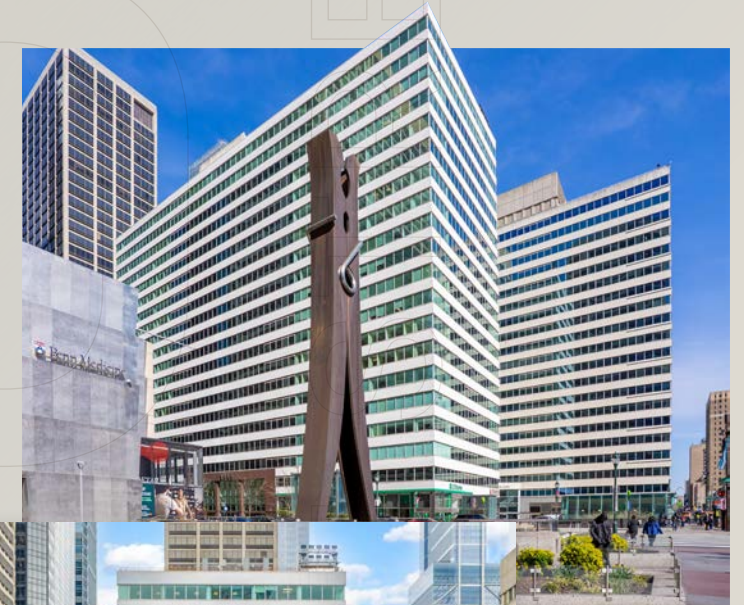
Immediate access to all public transportation, local amenities, and parking



On-site banking, tenant conference center, concierge, and full-service restaurant



Extensive capital improvements underway with premium spec-suites coming soon



## Accesso Club

An exclusive amenities program offered to clients and business employees of Accesso



Discounted tickets to local and national events for your business or personal needs



Exclusive discounts and tailored experiences in your local area



Personal and professional growth at your office with seminars and classes



Access to Accesso portfolio fitness centers, conference rooms, and co-working spaces

# Space for today, Flexibility for Tomorrow.



Full-Floor Flexibility



Capital Improvements Underway

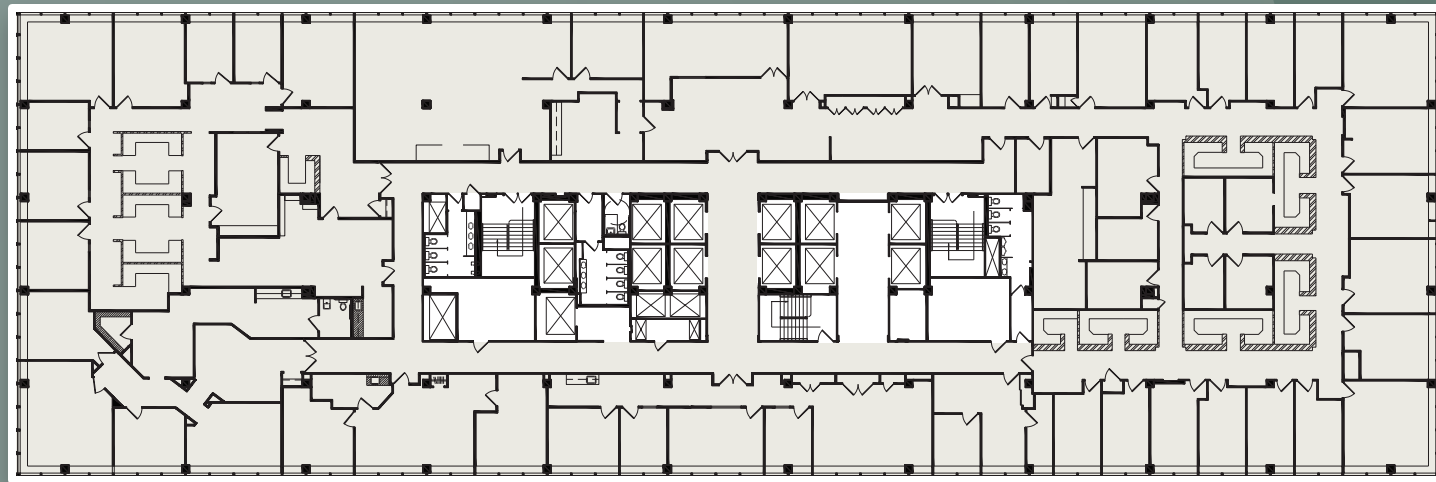


Efficient Floor Plans



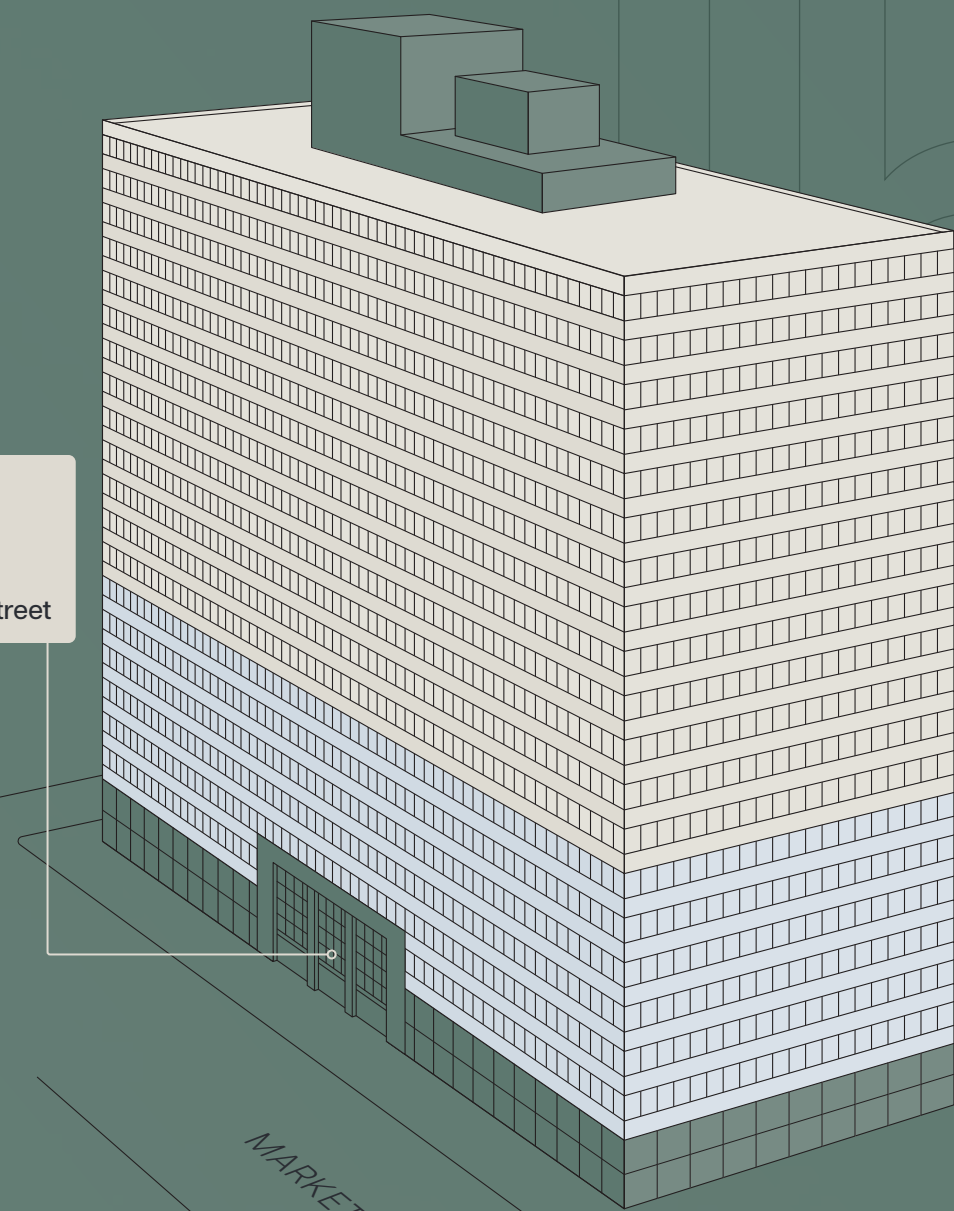
New Spec-Suites Coming Soon

Typical Floor Plan: 26,175 SF



Floors 7-20  
Main Tower Stack  
Accessible via main  
entrance on Market Street

Floors 2-6  
Private Lower Stack  
Accessible via private  
entrance in courtyard



MARKET STREET

15TH STREET

# Centered in the City

## Downtown Convenience

- 1 min. walk to City Hall
- 2 min. walk to Suburban Station
- 3 min. walk to Love Park
- 12 min. walk to Rittenhouse Square

## Driving Distances

- 1 mi. to I-676
- 1.5 mi. to I-76
- 2 mi. to I-95
- 12 mi. to Philadelphia International Airport



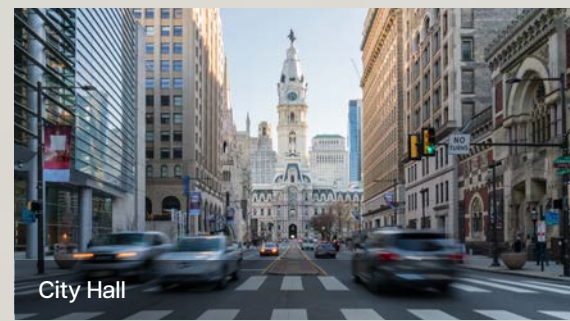
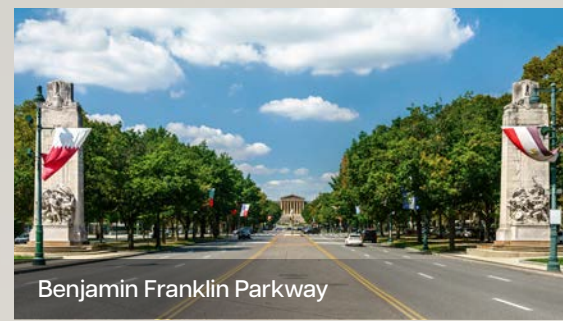
## Nearby Amenities

**300+**  
Restaurants, shops & hotels within a 15 minute walk

- Restaurants
- Shops
- Hotels

## Transit Legend

- SEPTA Station
- PATCO Station
- Amtrak Station
- Market-Frankford Line
- Broad Street Line
- PATCO Speedline



# 1515 MARKET STREET

## Contacts

**Alex Breitmayer**  
+1 215 399 1813  
alex.breitmayer@jll.com

**Joshua Sloan**  
+1 215 988 5554  
joshua.sloan@jll.com



Although information has been obtained from sources deemed reliable, neither Owner nor JLL makes any guarantees, warranties or representations, express or implied, as to the completeness or accuracy as to the information contained herein. Any projections, opinions, assumptions or estimates used are for example only. There may be differences between projected and actual results, and those differences may be material. The Property may be withdrawn without notice. Neither Owner nor JLL accepts any liability for any loss or damage suffered by any party resulting from reliance on this information. If the recipient of this information has signed a confidentiality agreement regarding this matter, this information is subject to the terms of that agreement. ©2026. Jones Lang LaSalle IP, Inc. All rights reserved.

