



FOR LEASE

Maple View Plaza

940 S 2000 W
Springville, UT 84663

Property Information

- 2nd floor office space available
- Right off I-15
- Excellent parking
- Elevator
- **Office Suite 217 - \$1,950/month**
 - 3 private offices
 - open space
 - Tenant pays for interior janitorial

Asking Price:
\$1,950/month

CONTACT US

Dan Ford

Senior Vice President
+1 801 420 0137
dan.ford@colliers.com



Colliers International

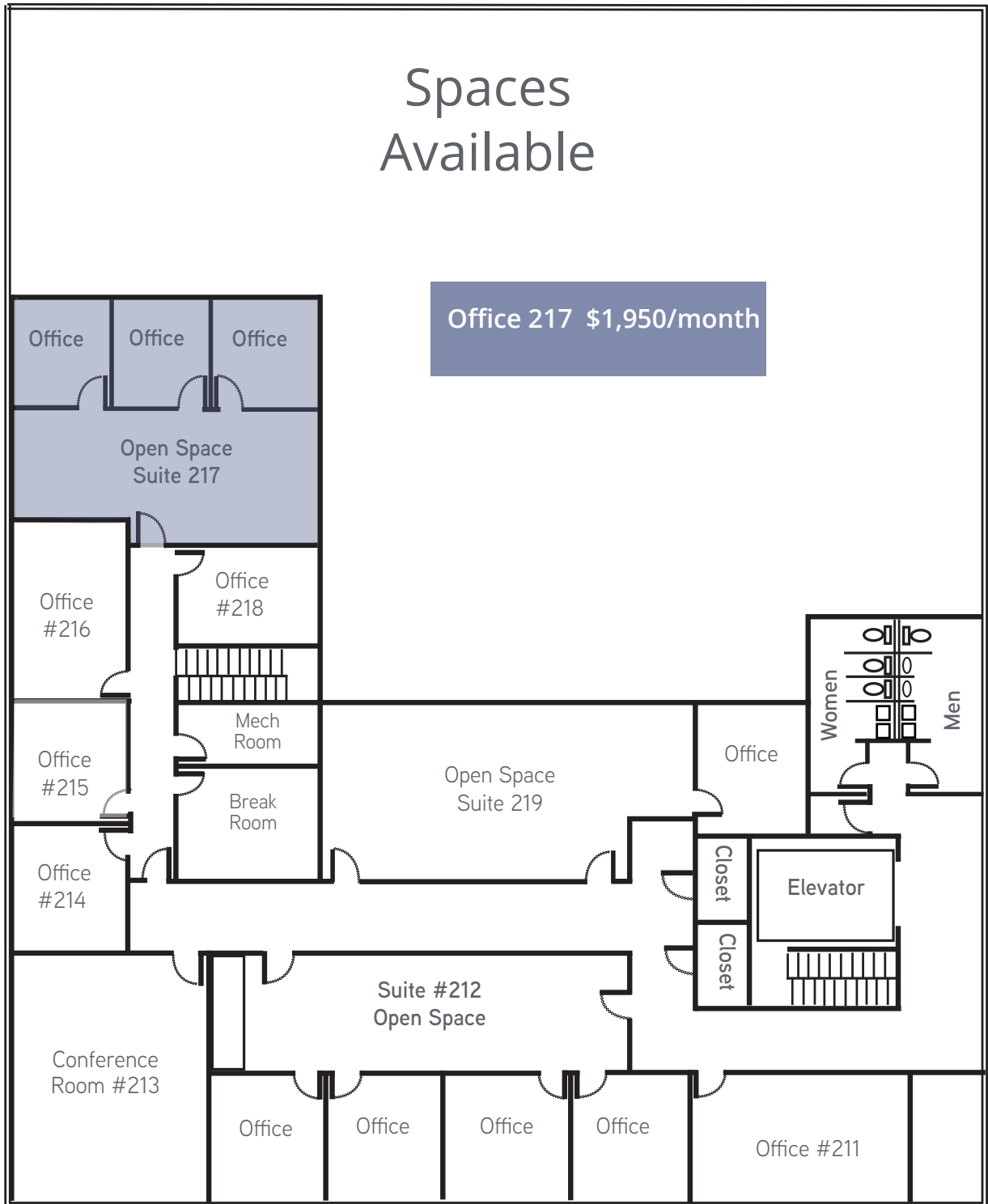
2100 Pleasant Grove Blvd, Suite 200
Pleasant Grove, UT 84062
Main: +1 801 610 1300
colliers.com

Accelerating success.

Floor Plan

Spaces Available

Office 217 \$1,950/month



Photos

Suite 217





CONTACT US

Dan Ford
Senior Vice President
+1 801 420 0137
dan.ford@colliers.com



This document has been prepared by Colliers International for advertising and general information only. Colliers International makes no guarantees, representations or warranties of any kind, expressed or implied, regarding the information including, but not limited to, warranties of content, accuracy and reliability. Any interested party should undertake their own inquiries as to the accuracy of the information. Colliers International excludes unequivocally all inferred or implied terms, conditions and warranties arising out of this document and excludes all liability for loss and damages arising there from. This publication is the copyrighted property of Colliers International and/or its licensor(s). ©2026 All rights reserved.