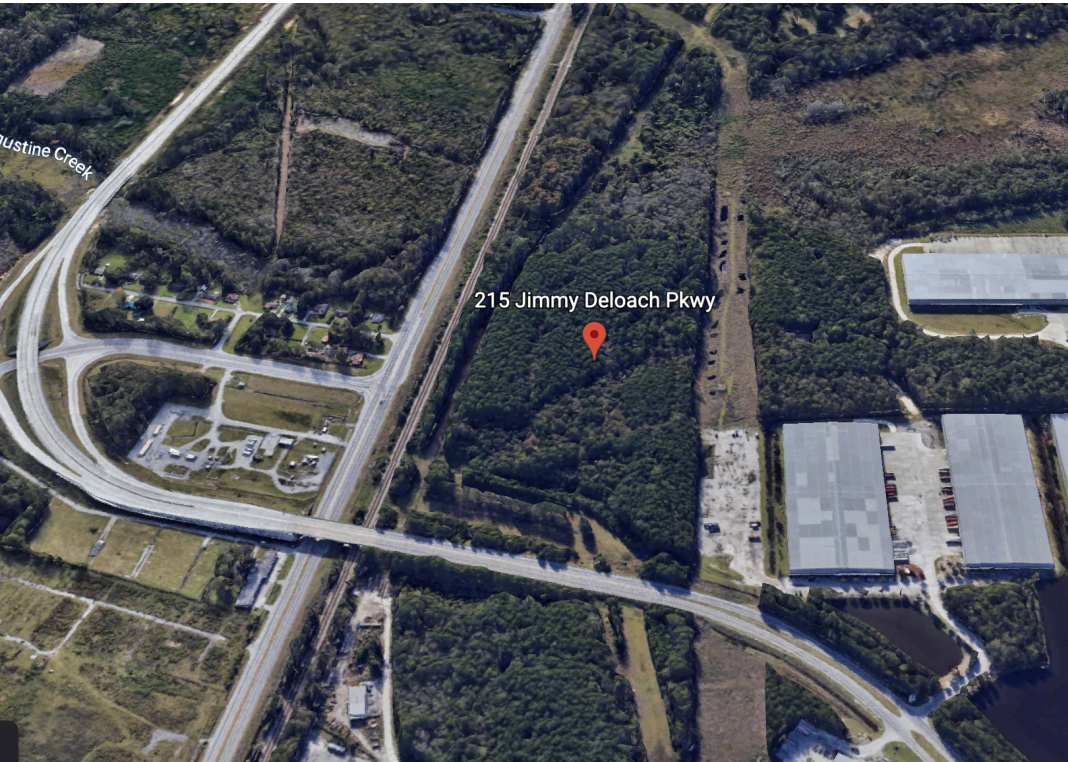


215 Jimmy DeLoach Parkway

Heavy Industrial Property | Savannah, Ga.

For Sale

\$8,000,000.00



Rare opportunity Heavy Industrial Property within three (3) miles of the Savannah Port.

Rare find Zoned Heavy Industrial 30.38 Acres 16 Uplands, 13 Wetlands Located within Three Miles of the Savannah Port. This property has 966 ft of frontage on Jimmy DeLoach Pkwy, and over 1394 Frontage on Hwy 21, with CSX Rail.



**BERKSHIRE
HATHAWAY**
HomeServices

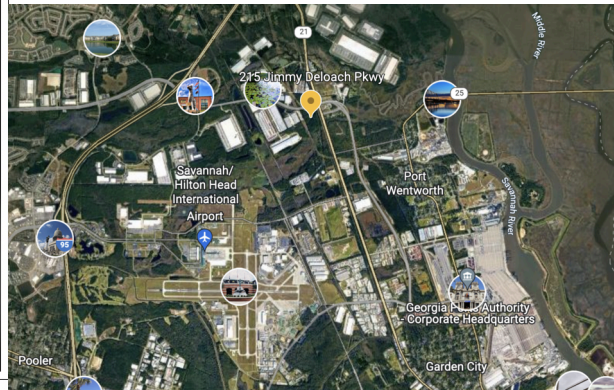
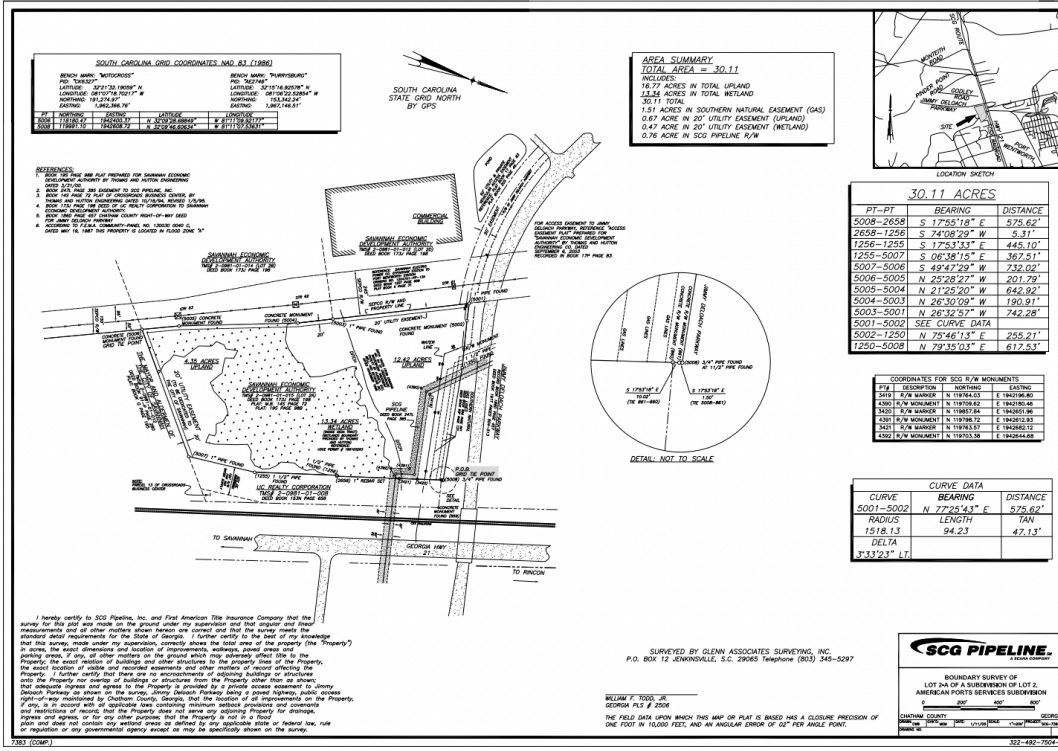
Cora Bett Thomas Realty

COMMERCIAL DIVISION

215 Jimmy DeLoach Parkway

Heavy Industrial Property | Savannah, Ga.

For Sale
\$8,000,000.00



Highly Visable and Easy Access off Jimmy DeLoach Parkway.

- Type - Heavy Industrial Land
- Location - Savannah, Ga.
- Utilities - Water, Sewer, Electric
- Zoning - P-I-2 Heavy Industrial
- Land AC - Gross 30.28, Upland 16.67 and 13.61 Wetlands
- Land SF - Gross 1,318,997 SF
- Frontage - 966' on Jimmy DeLoach Parkway
- Rail - CSX



Kim Lyle

Commercial Real Estate Specialist
kyle@baystreetrealtygroup.com
912-484-1330
www.berkshirehathawayhs.com/



BERKSHIRE HATHAWAY
HomeServices

Cora Bett Thomas Realty

5 East Perry Street Savannah, GA 31401

©2022 BHH Affiliates, LLC. Real Estate Brokerage Services are offered through the network member franchisees of BHH Affiliates, LLC. Most franchisees are independently owned and operated. Berkshire Hathaway HomeServices and the Berkshire Hathaway HomeServices symbol are registered service marks of Columbia Insurance Company, a Berkshire Hathaway affiliate. Information not verified or guaranteed. If your property is currently listed with a Broker, this is not intended as a solicitation. Equal Housing Opportunity.

COMMERCIAL DIVISION