

# RETAIL BUILDING FOR SALE

404 - 406 Thompson Lane, Nashville, Tennessee



## HIGHLIGHTS

**Size** 0.11 acres ; 1,450 sf

**Details** Zoned CS - Commercial Service

**Area** Positioned in South Nashville, this property sits within an active stretch of Thompson Lane surrounded by everyday retail and services. Its central location within provides access to surrounding communities, major connectors, and essential amenities.



Less than 5 miles from  
Downtown Nashville



Surrounded by established  
retail on Thompson Lane and  
Nolensville Pike



Double-sided billboard with lengthy  
lease in place



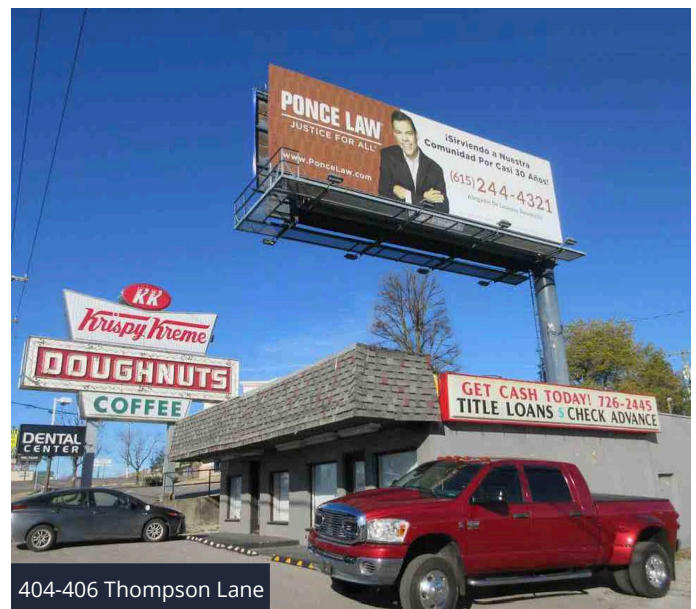
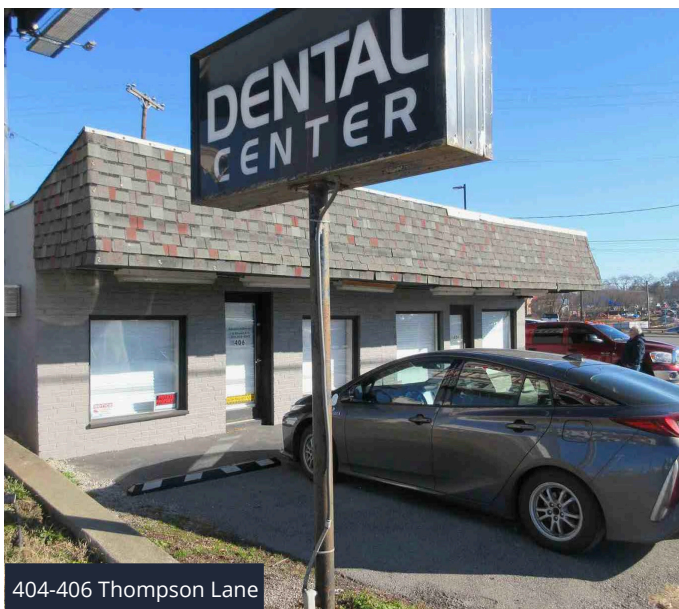
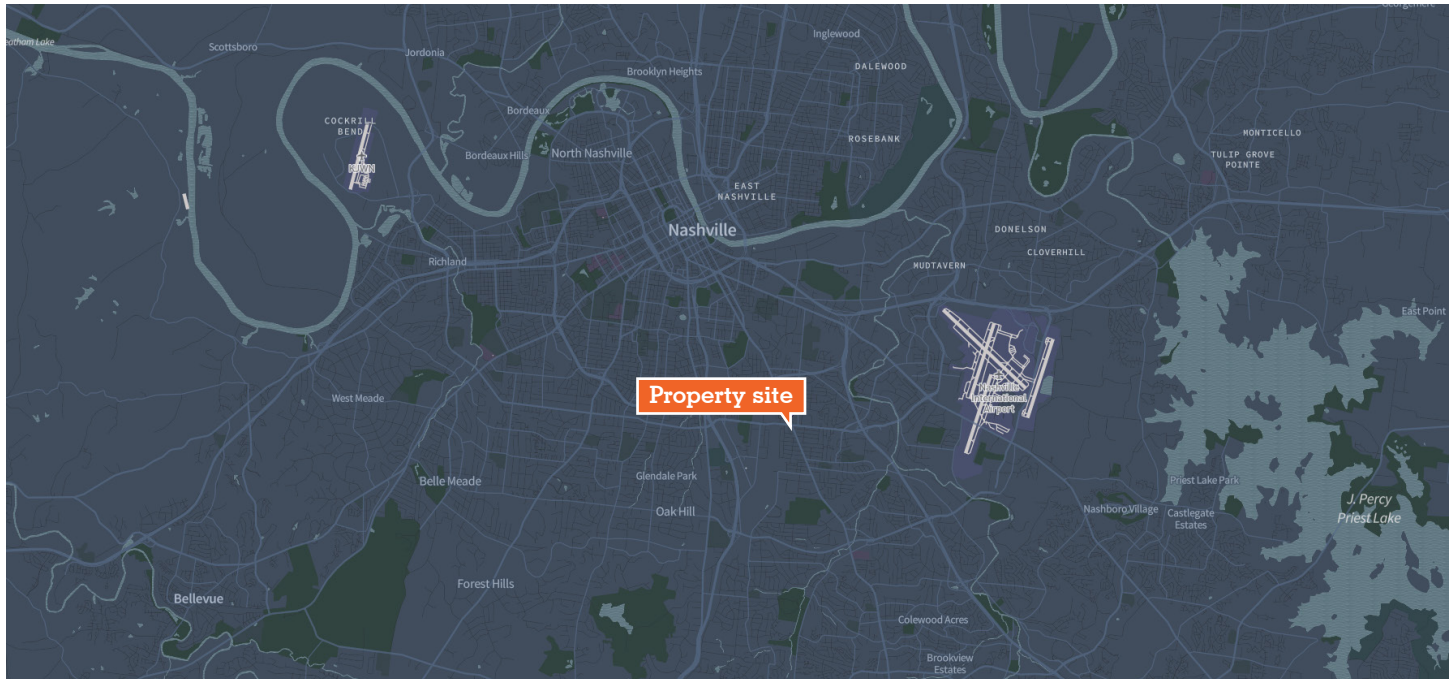
High visibility with average daily  
traffic count - 27,721 AADT

**Adam Dennis**  
Senior Associate  
+1 615 727 0003  
adam.dennis@avisonyoung.com

**AVISON  
YOUNG**

# LOCATION MAP

404 - 406 Thompson Lane  
Nashville, Tennessee



**Adam Dennis**  
Senior Associate  
+1 615 727 0003  
adam.dennis@avisonyoung.com

**AVISON  
YOUNG**