

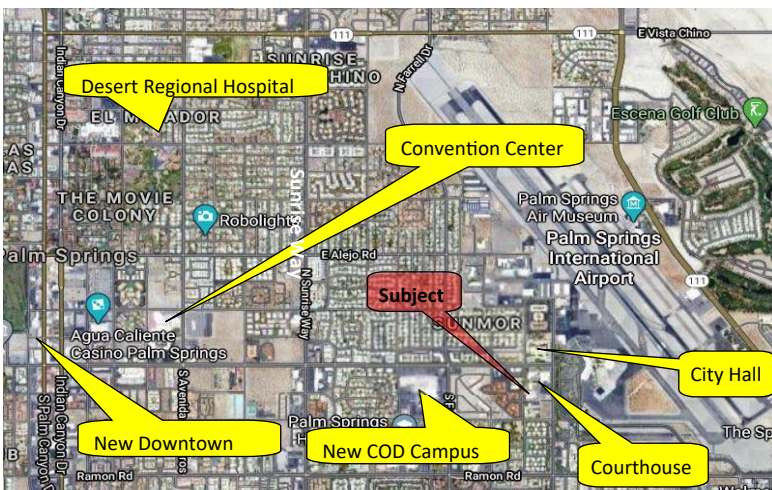
**PROFESSIONAL OFFICE CONDO**

**225 S Civic Dr. #2-13**  
**Palm Springs, CA**

*Professional Park III*



- ◆ **Sales Price \$359,000.**
- ◆ **For lease for \$1800.00 per month**
- ◆ **Approx. 1059sf +/-**
- ◆ **Common area fee: \$280.**
- ◆ **Ample parking**
- ◆ **Outstanding location**
- ◆ **Three private offices**
- ◆ **Conference room**
- ◆ **Lobby**
- ◆ **Large secretarial space**
- ◆ **Large bright offices with views**
- ◆ **Elevator and bathrooms**
- ◆ **More pictures on page 3**
- ◆ **Walking distance to the courthouse**

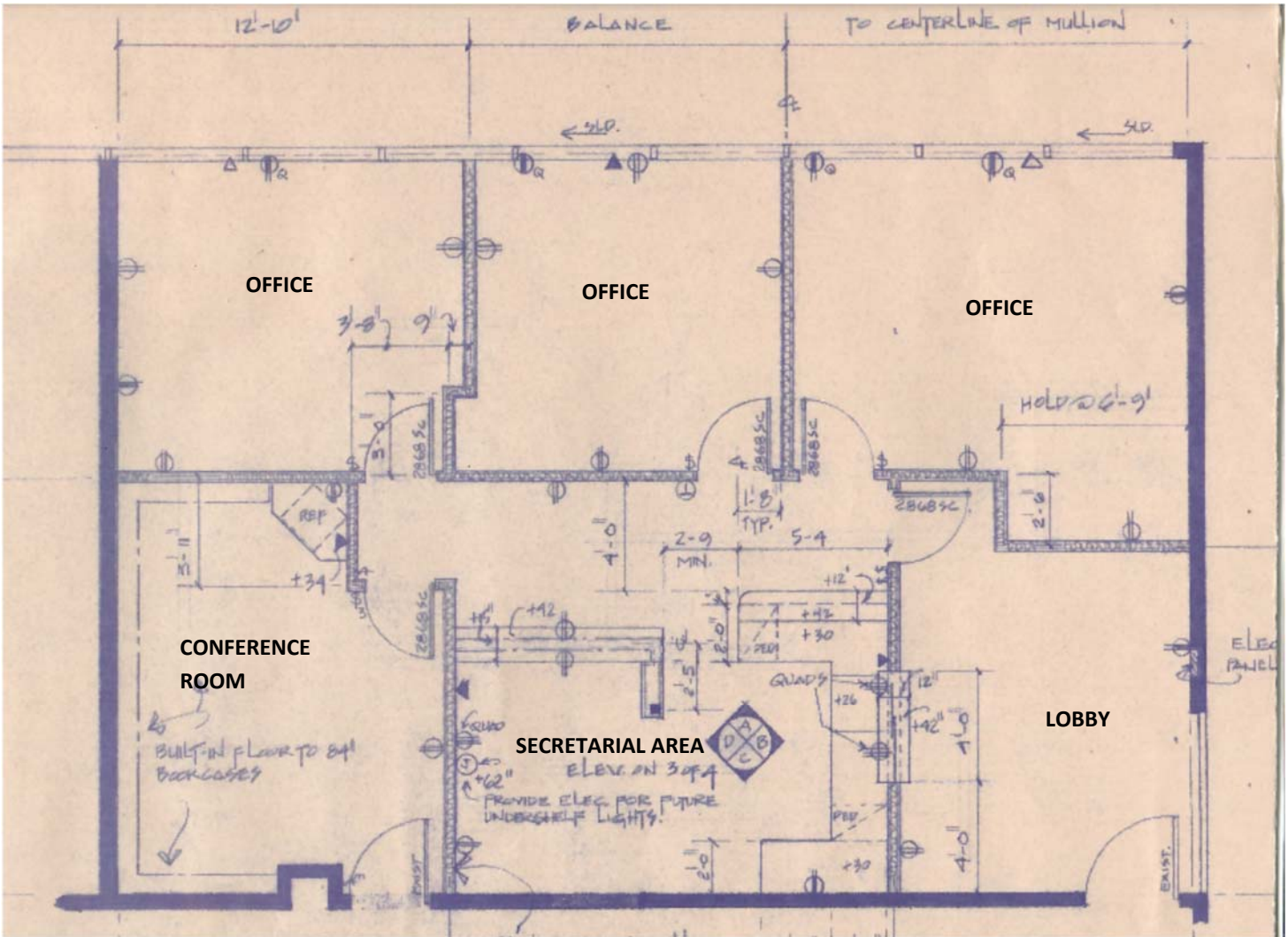


**BADDOUR & ASSOCIATES COMMERCIAL REALTORS**  
1401 N. PALM CANYON DR., #200 PALM SPRINGS, CA  
WWW.BADDOURREALESTATE.COM

**INGRID BADDOUR, CCIM**  
PH. 760-272-9543  
INGRID@BADDOURREALESTATE.COM  
DRE #00751437

**Floorplan for Condo**

**Approx 1059 SF**



**BADDOUR & ASSOCIATES COMMERCIAL REALTORS**

1401 N. PALM CANYON DR., #200 PALM SPRINGS,

**INGRID BADDOUR, CCIM**

**PH. 760-272-9543**

[INGRID@BADDOURREALESTATE.COM](mailto:INGRID@BADDOURREALESTATE.COM)

**DRE #00751437**



Lobby



Lobby



Office 2



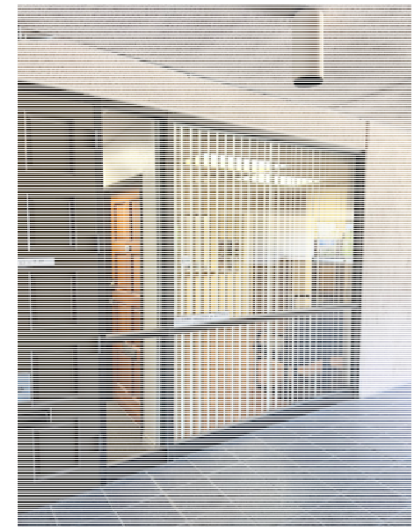
Office 3



Conference Room



Entrance Walkway



Entrance