



FOR RENT

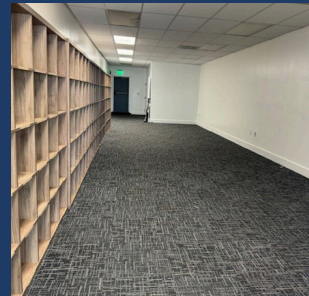
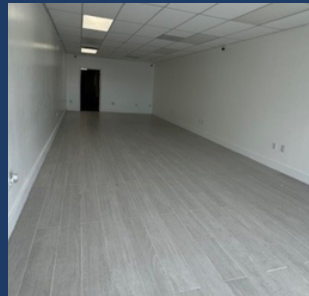
1,500 SQFT AT SOCIAL SECURITY BUILDING

8343 BISCAYNE BOULEVARD
MIAMI, FL 33138



1,500 SQFT AVAILABLE

**Prominent
Signage
Opportunities
Attracts
Attention From
All Directions
Ideal Fit For
Insurance
Companies,
Medical
Practices, Various
Retail, & Office
Establishments**



**Perfectly Situated to Capture Very
High Visibility, Thanks to Its Strategic
Location Next to a Major Social
Security Office. High Visibility Steady
Stream of Customers & Clients Right at
Your Doorstep**

**Contact Us Today! 305-386-0540
Richard@CohenInvestmentsRealty.com**