

LAND FOR DEVELOPMENT



2.72 Acre Lot With 282 Feet of Frontage

24W523-541 Lake St. Roselle IL

Brad Bullington

630-674-6989

GC Realty & Development LLC 219 E. Irving Pk. Rd. Roselle IL 60172

Sale Price: \$900,000



PROPERTY INFORMATION

- ◆ Building Size: 1,200 SF
- ◆ Land Site: 117,612 SF
- ◆ Zoning: R-1
- ◆ County: Dupage
- ◆ Township: Bloomingdale
- ◆ Taxes: \$11,363
- ◆ Pins: 0209302060
0209302059
0209302027

PROPERTY SUMMARY

2.72 Acres for sale on Lake St with 282 feet of frontage. Site can be redeveloped for commercial uses. Can easily be rezoned to B-2 which can accommodate many retail type businesses. Contractor yards are a permitted use in B-2. Zoning will be more flexible in unincorporated Dupage County.



Brad Bullington

630-674-6989

brad@gcrealtyinc.com

Tony Bonavolonta

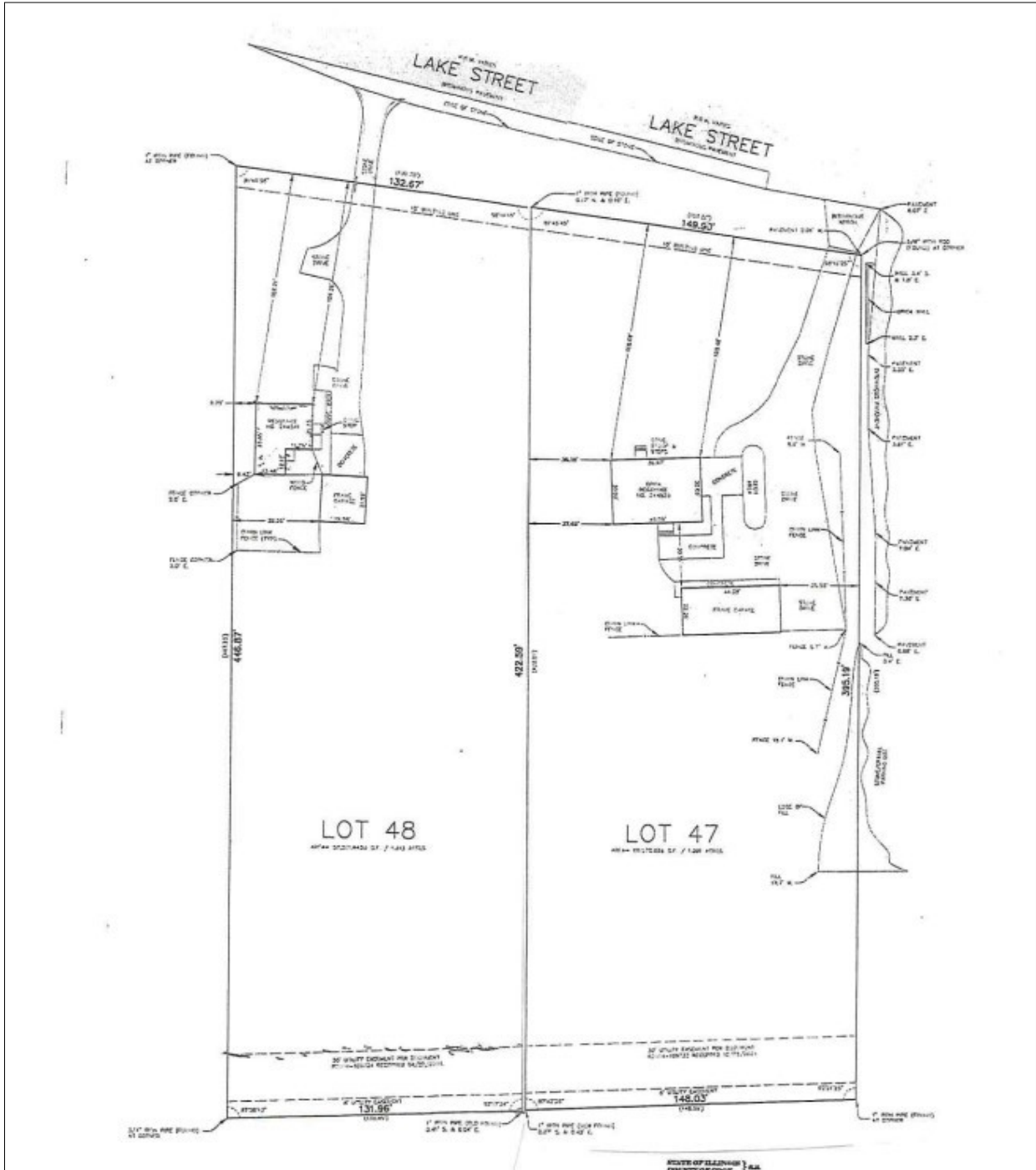
312-613-8377

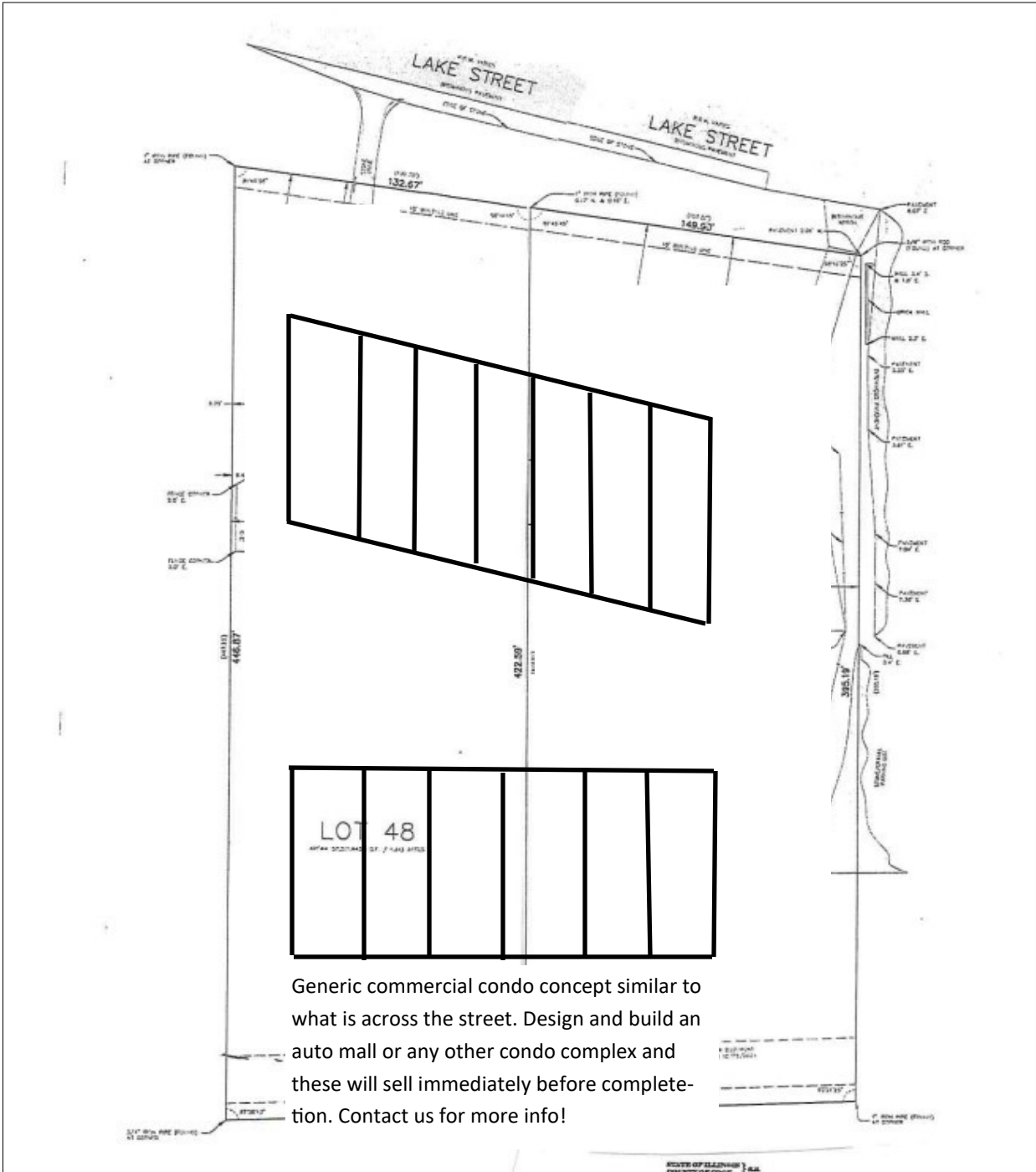
aabxxi@aol.com

GC Realty & Development LLC

219 E. Irving Pk. Rd. Roselle IL 60172

bradbullington.com





Generic commercial condo concept similar to what is across the street. Design and build an auto mall or any other condo complex and these will sell immediately before completion. Contact us for more info!