

FOR LEASE

INDUSTRIAL FLEX UNITS WITH I-75 FRONTAGE

14261 JETPORT LOOP, FORT MYERS, FLORIDA 33913



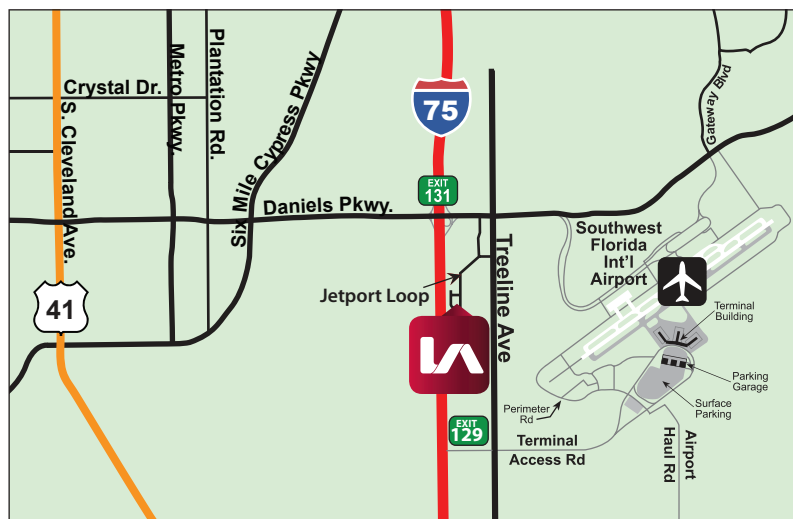
I-75 FRONTAGE!

■ **AVAILABLE:** Units 5-6 - 5,000 SF
Units 7-8 - 5,000 SF
TOTAL - 10,000 SF

■ **RATE:** \$20.00 / SF Gross
(Plus Sales Tax)

PROPERTY FEATURES

- **UNIT SIZES:** 5,000 SF to 10,000 SF
- **5,000 SF Unit** Consists of 3,000 SF Warehouse, 1,000 SF Office, and 1,000 SF Mezzanine, with Two (2) Grade-Level Doors
- **10,000 SF Unit** Consists of 6,000 SF Warehouse, 2,000 SF Office, and 2,000 SF Mezzanine, with Four (4) Grade-Level Doors
- 18' Clear Height
- Concrete Tilt-Up Construction



Please Contact:
The Industrial Team

Frank Martone
Vice President

📞 **239.210.7605**

✉️ fmartone@lee-associates.com

All information furnished regarding property for sale, rental or financing is from sources deemed reliable, but no warranty or representation is made to the accuracy thereof and same is subject to errors, omissions, change of price, or other conditions prior to sale, lease or financing or withdrawal without notice. No liability of any kind is to be imposed on the broker herein.

YOUR LOCAL MARKET **EXPERT**

11215 Metro Parkway, Suite 1 | Fort Myers, Florida 33966 | Lee-FL.com

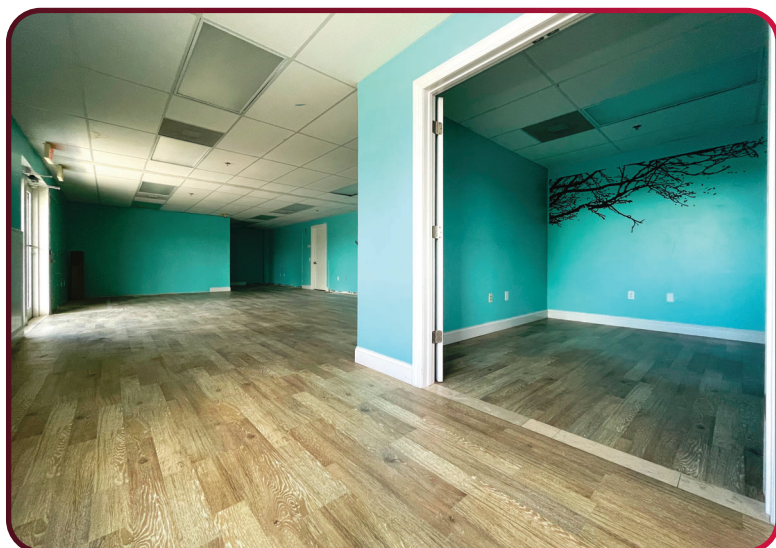


FOR LEASE

INDUSTRIAL FLEX UNITS WITH I-75 FRONTAGE

14261 JETPORT LOOP, FORT MYERS, FLORIDA 33913

LEE & ASSOCIATES
COMMERCIAL REAL ESTATE SERVICES



YOUR LOCAL MARKET **EXPERT**

11215 Metro Parkway, Suite 1 | Fort Myers, Florida 33966 | Lee-FL.com

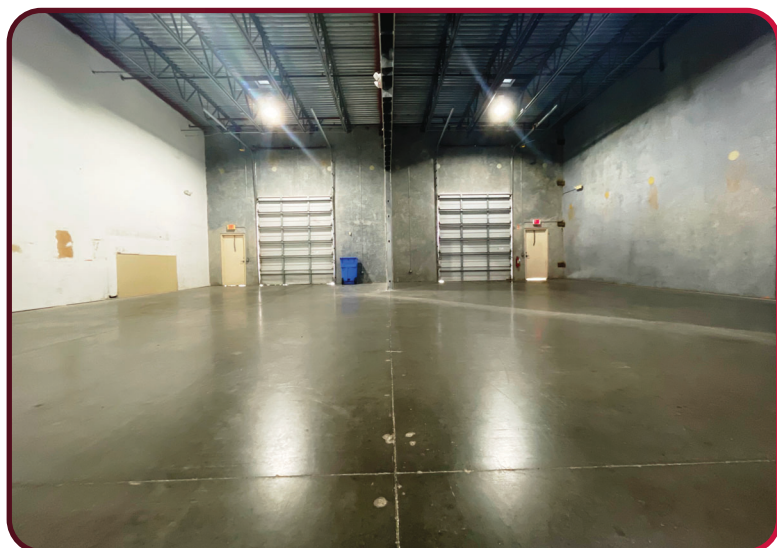
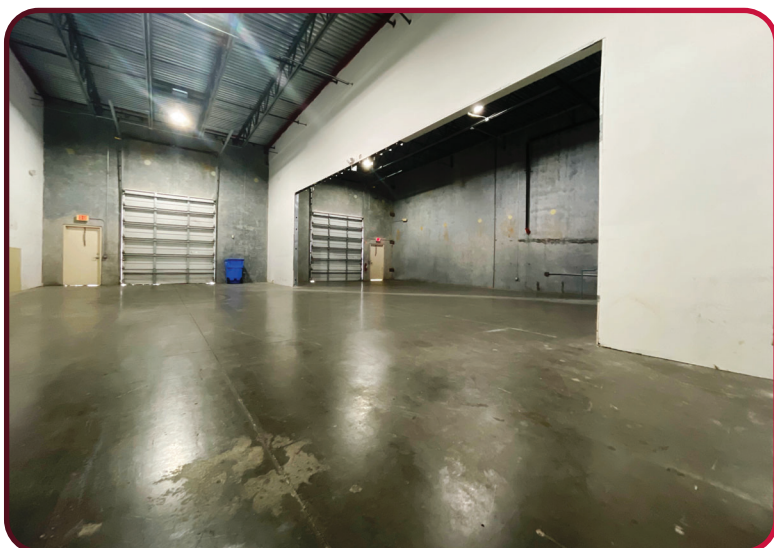
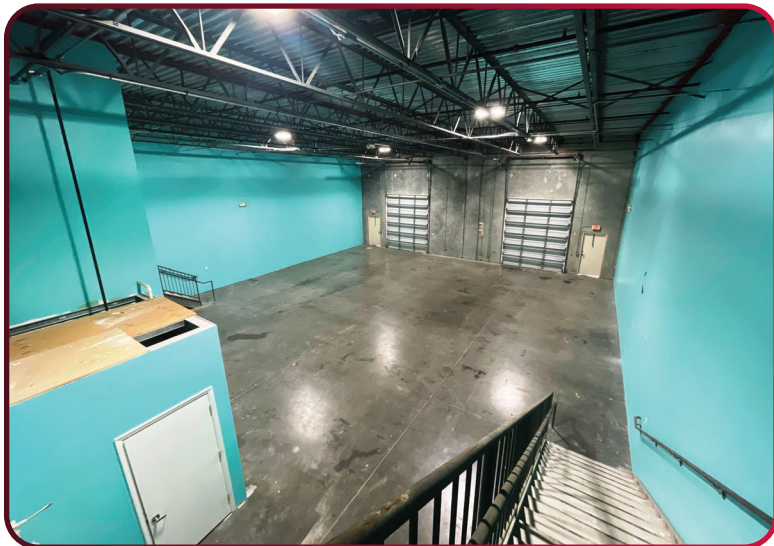


FOR LEASE

INDUSTRIAL FLEX UNITS WITH I-75 FRONTAGE

14261 JETPORT LOOP, FORT MYERS, FLORIDA 33913

LEE & ASSOCIATES
COMMERCIAL REAL ESTATE SERVICES



YOUR LOCAL MARKET **EXPERT**

11215 Metro Parkway, Suite 1 | Fort Myers, Florida 33966 | Lee-FL.com



FOR LEASE

INDUSTRIAL FLEX UNITS WITH I-75 FRONTAGE

14261 JETPORT LOOP, FORT MYERS, FLORIDA 33913



LEASED	LEASED	LEASED	AVAILABLE 5,000 SF	AVAILABLE 5,000 SF
UNIT 1	UNIT 2	UNITS 3 & 4	UNITS 5 & 6	UNITS 7 & 8

YOUR LOCAL MARKET **EXPERT**

11215 Metro Parkway, Suite 1 | Fort Myers, Florida 33966 | Lee-FL.com