



- ✓ 2050 SF on second floor / left side
- ✓ Convenient parking
- ✓ Condo association dues are \$808.18/qtr
- ✓ Nicely built out space which is subdividable
- ✓ Lovely courtyard
- ✓ Easy access to I-40 and Stratford Road
- ✓ Built in 1983; and several renovations including new roof & exterior stairs

FOR SALE: \$320,000

Cindy Christopher

336.926.1411

1080 West Fourth Street, Winston-Salem, NC

Cindy@ChristopherCommercialNC.com



**Christopher
Commercial**
COMMERCIAL REAL ESTATE

PHOTOS



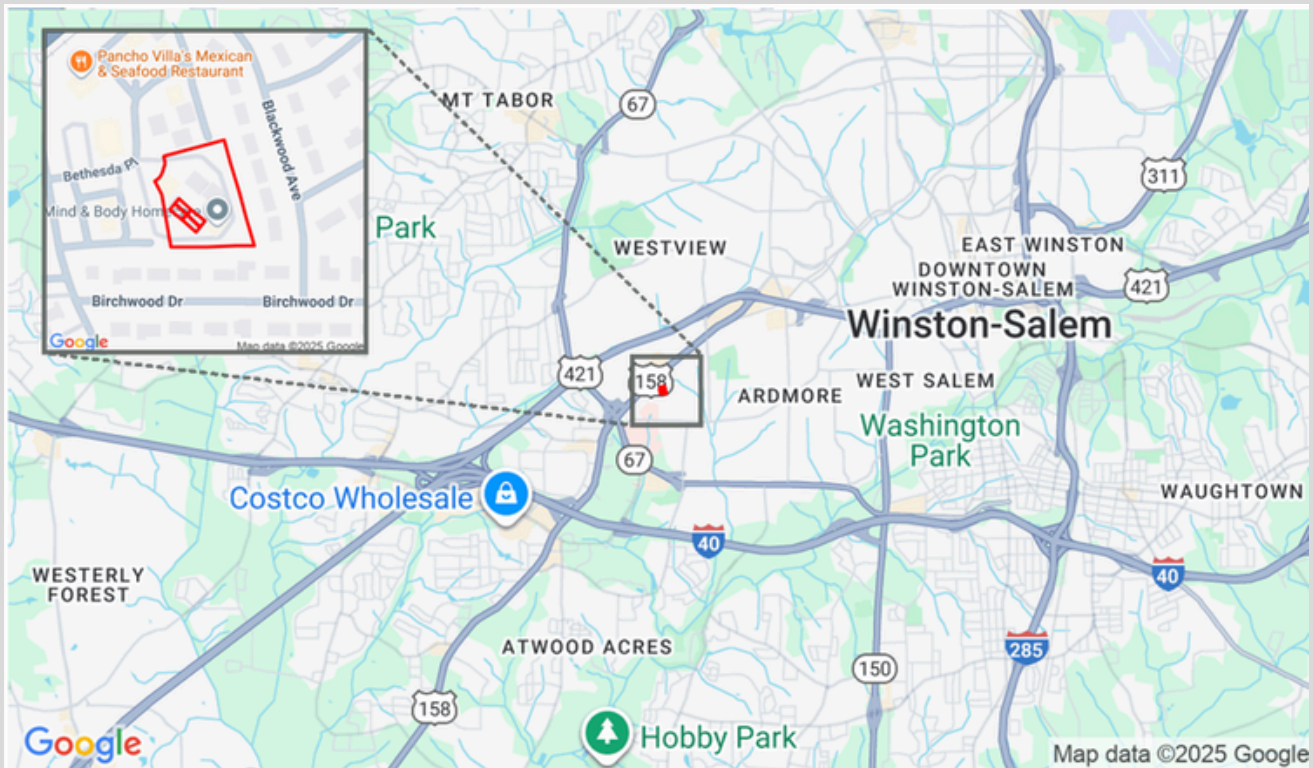
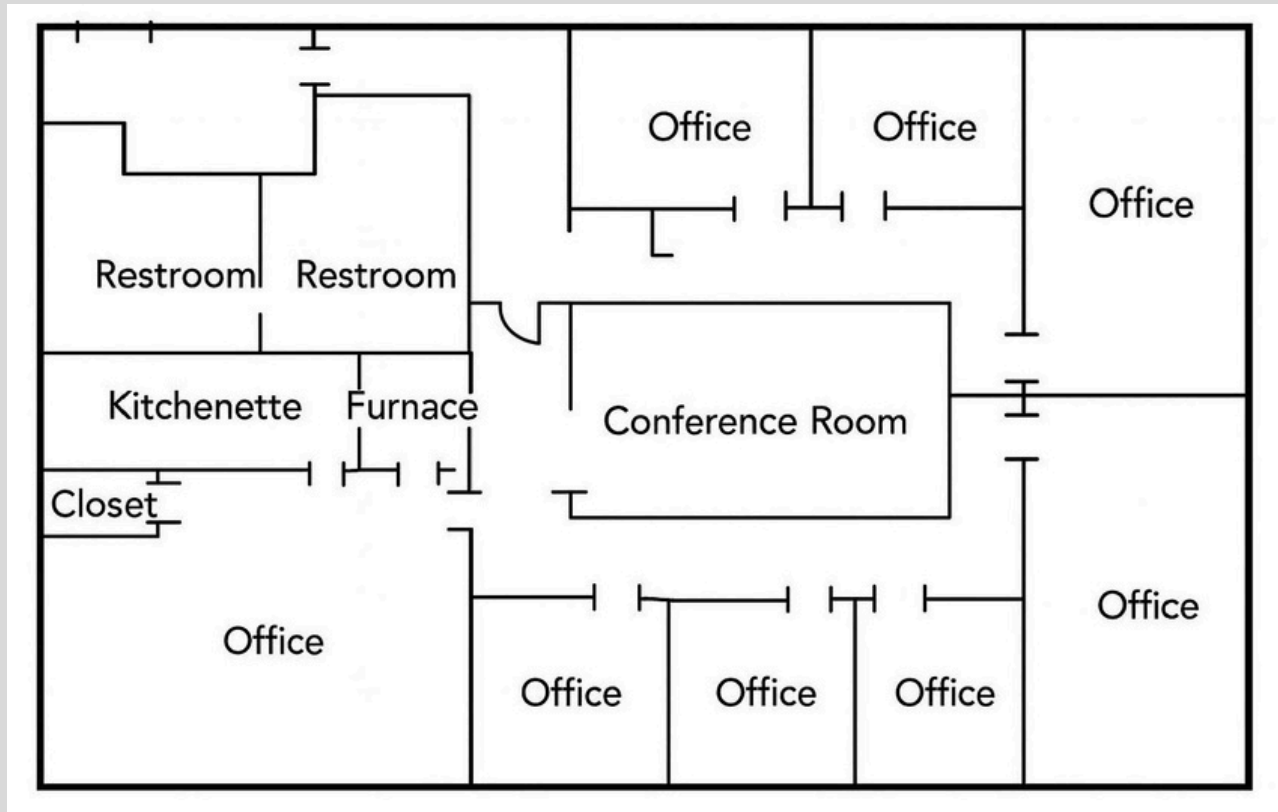
☎ 336.926.1411

🏠 1080 West Fourth Street, Winston-Salem, NC

✉ Cindy@ChristopherCommercialNC.com

**Christopher
Commercial**
COMMERCIAL REAL ESTATE

FLOOR PLAN & MAP



The information contained herein has been taken from sources deemed to be reliable. Christopher Commercial makes no representation or warranties, expressed or implied, as to the accuracy of this information. All information in this document is subject to verification prior to purchase or lease.

☎ 336.926.1411

🏠 1080 West Fourth Street, Winston-Salem, NC

✉ Cindy@ChristopherCommercialNC.com

**Christopher
Commercial**
COMMERCIAL REAL ESTATE