

INDUSTRIAL  
OFFICE AVAILABLE

# 688 GIBRALTAR

MILPITAS, CA



## ROGER FIELDS

(650) 327-2014 OFFICE  
(650) 207-1610 CELL  
FIELDS@PENINSULALAND.COM

## PARKER FIELDS

(650) 327-2014 OFFICE  
(650) 208-9979 CELL  
PARKER@PENINSULALAND.COM

## CASDON JARDINE

(650) 327-2014 OFFICE  
(208) 358-1578 CELL  
CASDON@PENINSULALAND.COM





**688 GIBRALTAR CT**  
MILPITAS, CA

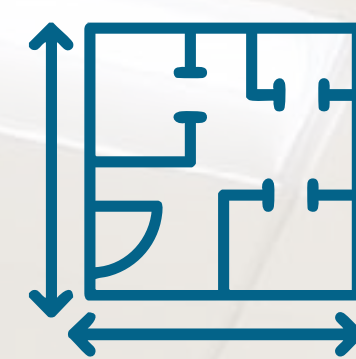
# PROPERTY HIGHLIGHTS



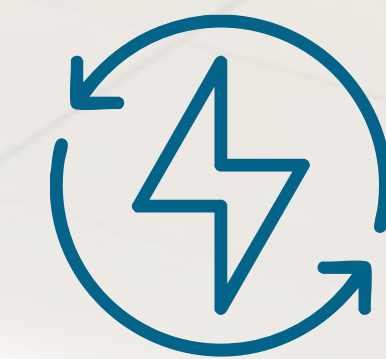
**PRIME MILPITAS  
INDUSTRIAL LOCATION**



**EXCELLENT FREEWAY  
AND TRANSIT ACCESS**



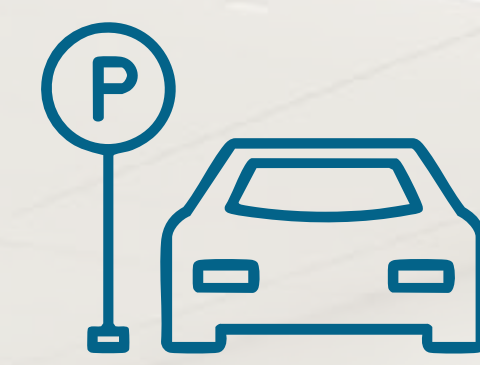
**FLEXIBLE R&D OR  
WAREHOUSE LAYOUT**



**HIGH-POWER  
ELECTRICAL  
INFRASTRUCTURE**



**MODERN OFFICE  
BUILD-OUT  
INCLUDED**



**AMPLE ON-SITE  
PARKING AVAILABLE**



**ZONED FOR LIGHT  
INDUSTRIAL USE**



**IDEAL FOR TECH OR  
MANUFACTURING**





688 GIBRALTAR CT  
MILPITAS, CA

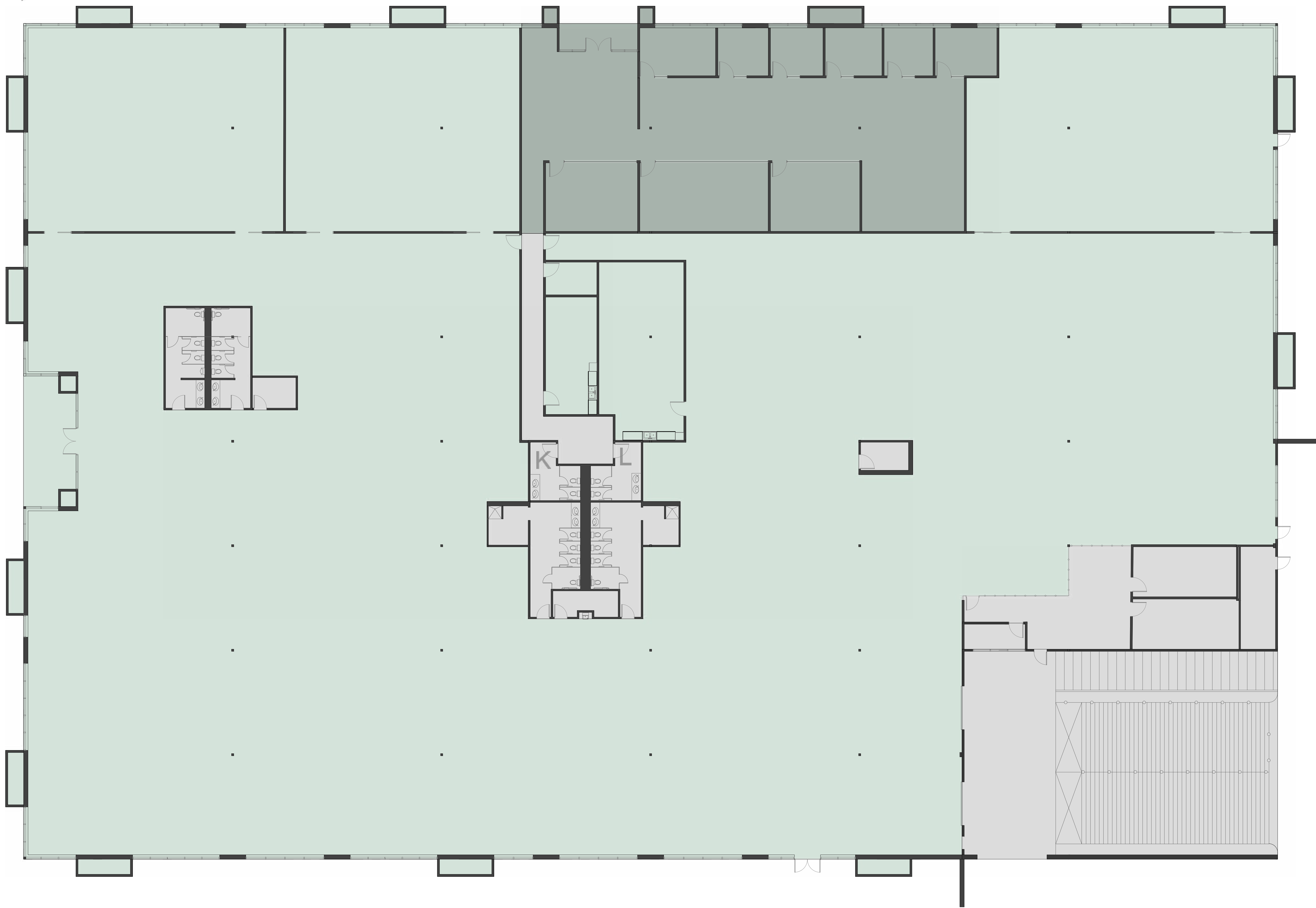


 **PENINSULA**  
land & capital



# FLOOR PLAN

688 GIBRALTAR CT  
MILPITAS, CA







688 GIBRALTAR CT

SURROUNDING  
AMENITIES



FOR MORE INFORMATION,  
PLEASE **CONTACT THE  
LISTING AGENTS:**

**ROGER FIELDS**

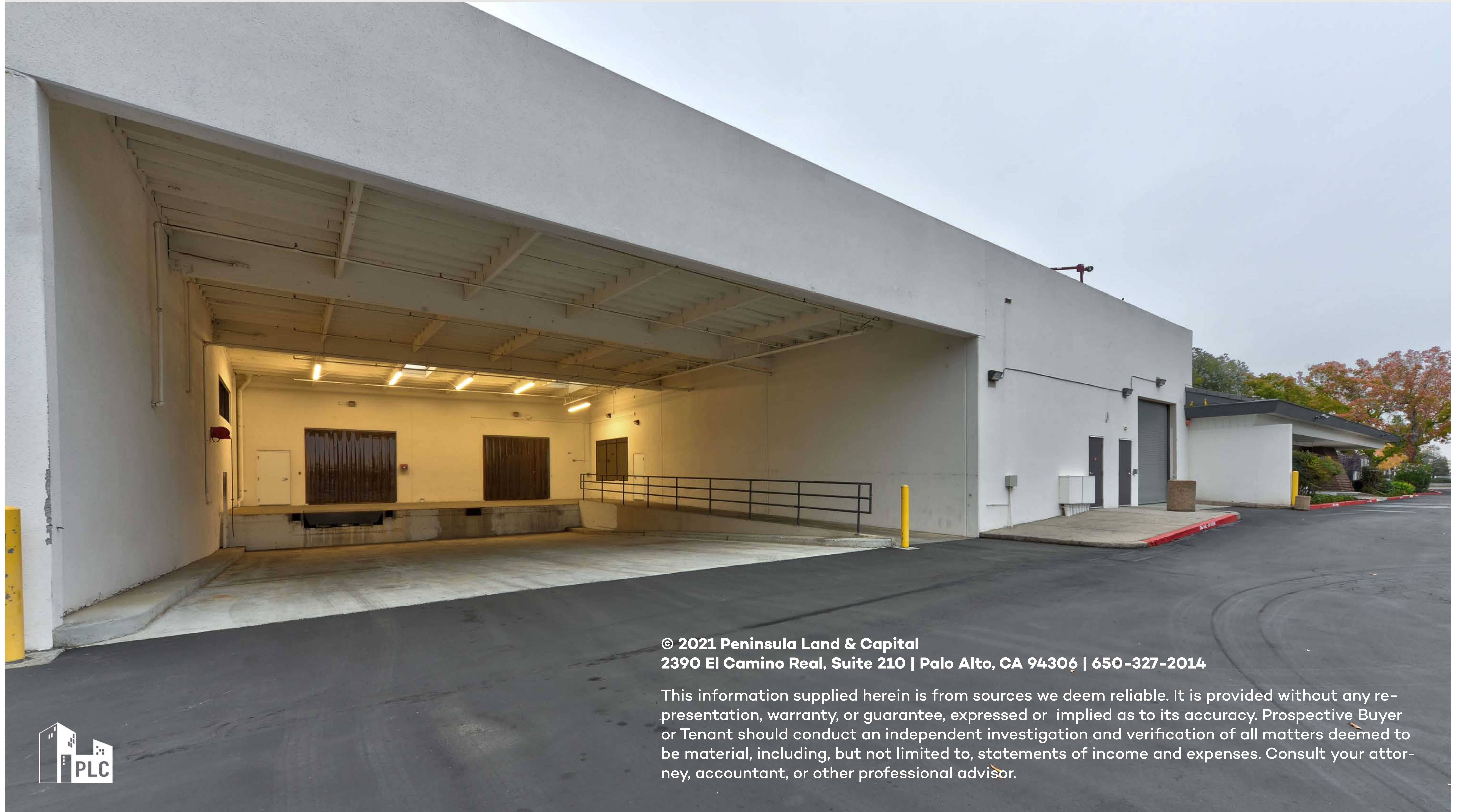
(650) 327-2014 OFFICE  
(650) 207-1610 CELL  
FIELDS@PENINSULALAND.COM

**PARKER FIELDS**

(650) 327-2014 OFFICE  
(650) 208-9979 CELL  
PARKER@PENINSULALAND.COM

**CASDON JARDINE**

(650) 327-2014 OFFICE  
(208) 358-1578 CELL  
CASDON@PENINSULALAND.COM



© 2021 Peninsula Land & Capital  
2390 El Camino Real, Suite 210 | Palo Alto, CA 94306 | 650-327-2014

This information supplied herein is from sources we deem reliable. It is provided without any representation, warranty, or guarantee, expressed or implied as to its accuracy. Prospective Buyer or Tenant should conduct an independent investigation and verification of all matters deemed to be material, including, but not limited to, statements of income and expenses. Consult your attorney, accountant, or other professional advisor.

