



M E R I D I A N

147 S. CHERRY STREET, SUITE 200 | WINSTON-SALEM, NC 27101 | P 336.722.1986 | F 336.723.3173 | MERIDIANREALTY.COM

# 720 W Main St Jamestown, NC 27282

Owner User or Investment  
Pro-Forma Cap Rate 8.1%



## Green Building



- Fully Leased
- 5,860± SF
- Lower Level Engineering Firm & Salon Suites
- Upper Level Dental Office

## Yellow Building



- Fully Leased
- 1,462± SF
- Built 1834

## Red Building



- 3,806± SF
- Lower Level Leased
- Upper Level Vacant
  - 2,066± SF Available

For more information:

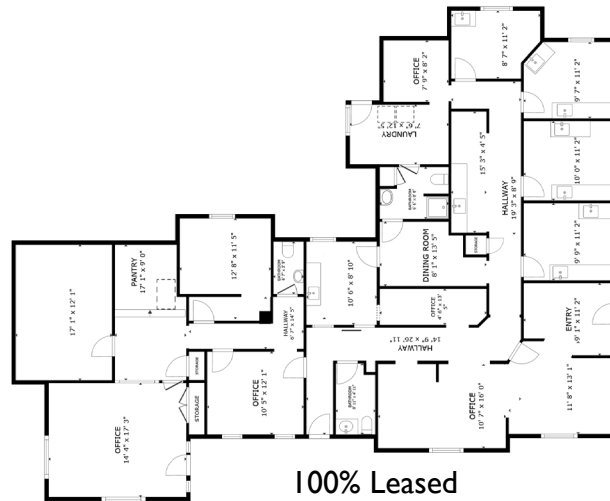
**Spencer T. Bennett, CCIM**

Spencer@meridianrealty.com

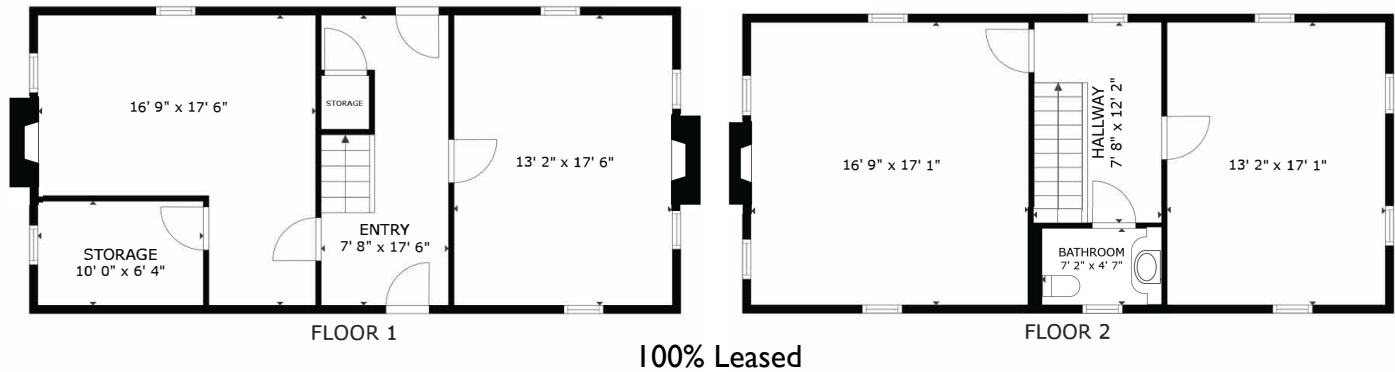
336.480.2327

**FOR SALE: \$1,100,000**

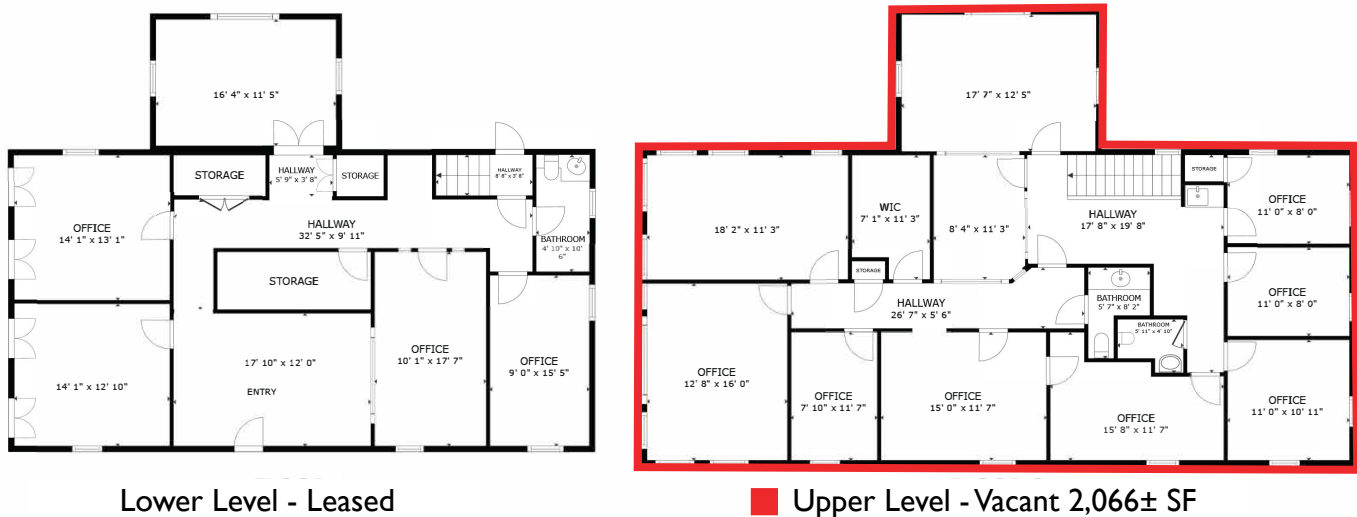
## Green Building



## Yellow Building



## Red Building





## Green Building



## Yellow Building

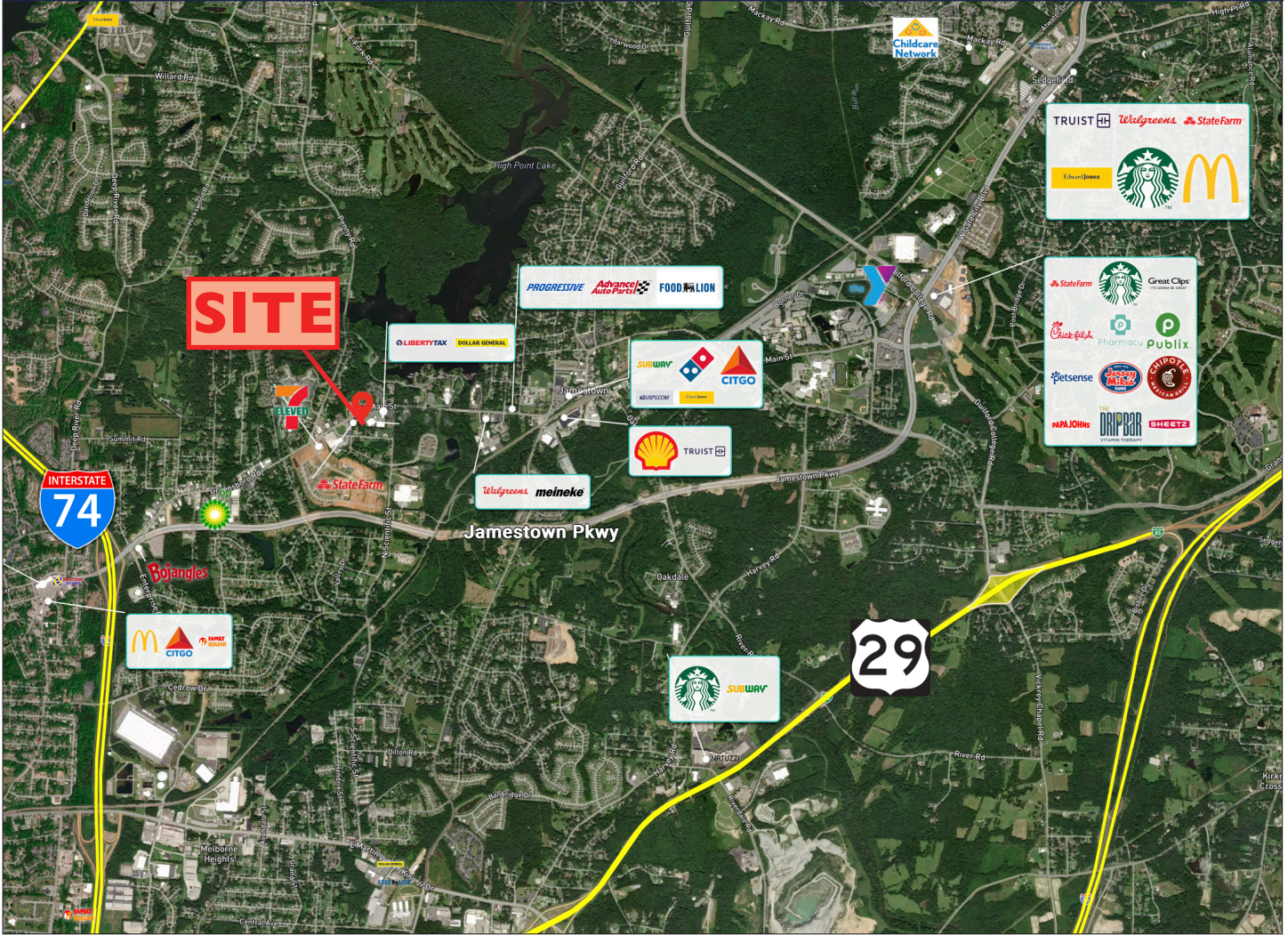


## Red Building





Aerial



Property Details

- 11,128± Total SF | 1.03± AC
- 2,066± SF Available
- Ample Parking
- Value Add Opportunity
- Excellent access to major corridors

Demographics

	1mi	3mi	5mi
Population	4,234	49,369	127,143
Household	1,774	18,632	51,431
Household Income	\$110,287	\$97,478	\$96,790

