

# 2700 Napa Valley Corporate Dr., Napa

## Suite B ~ ±13,304 SF ~ \$1.25/SF/Mo. NNN



- Reception Area
- Conference Room
- ±17 Private Offices
- Cubicle Areas
- Kitchenette
- Mail Room & Server Room
- Oversized Restrooms w/Showers
- Single Story Office in City of Napa
- Separately Metered
- Walking Distance to Dining Options
- Generous Full-Height Windows
- Bus Stop Nearby

**Procuring Broker  
Fee 5%\***

**A lease of five years or more will be granted a concession of three months free Base Rent if lease is signed by the end of 2025.**

**NOTE:** This space is divisible to ±4,210 SF. Divisions will affect the price, but be reasonably negotiated. Minimum divisibility within the complex is ±2,142 SF, and maximum contiguous space is ±23,121.

Virtual Tour: <https://www.youtube.com/watch?v=LPh30-BTnMQ>

\*For up to 5 Years, then 1.5% for any extended term.



**Michael Moffett**

License #00946472

707.479.1976

[mmoffett@cnapavalley.com](mailto:mmoffett@cnapavalley.com)

1775 Lincoln Ave.

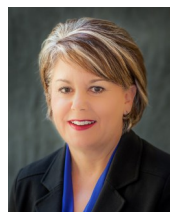
Napa, CA 94558

**Cathy D'Angelo Holmes**

License #01355085

707.304.3338

[cholmes@cnapavalley.com](mailto:cholmes@cnapavalley.com)



# 2700 Napa Valley Corporate Dr., Napa

## Suite B ~ ±13,304 SF ~ \$1.25/SF/Mo. NNN



Reception



Conference Room



Office Area



Signage



**Michael Moffett**

License #00946472

707.479.1976

[mmoffett@cbnapavalley.com](mailto:mmoffett@cbnapavalley.com)

1775 Lincoln Ave.  
Napa, CA 94558

**Cathy D'Angelo Holmes**

License #01355085

707.304.3338

[cholmes@cbnapavalley.com](mailto:cholmes@cbnapavalley.com)



# 2700 Napa Valley Corporate Dr., Napa

Suite B ~ ±13,304 SF ~ \$1.25/SF/Mo. NNN



**Michael Moffett**

License #00946472

707.479.1976

[mmoffett@cnapavalley.com](mailto:mmoffett@cnapavalley.com)

1775 Lincoln Ave.

Napa, CA 94558

**Cathy D'Angelo Holmes**

License #01355085

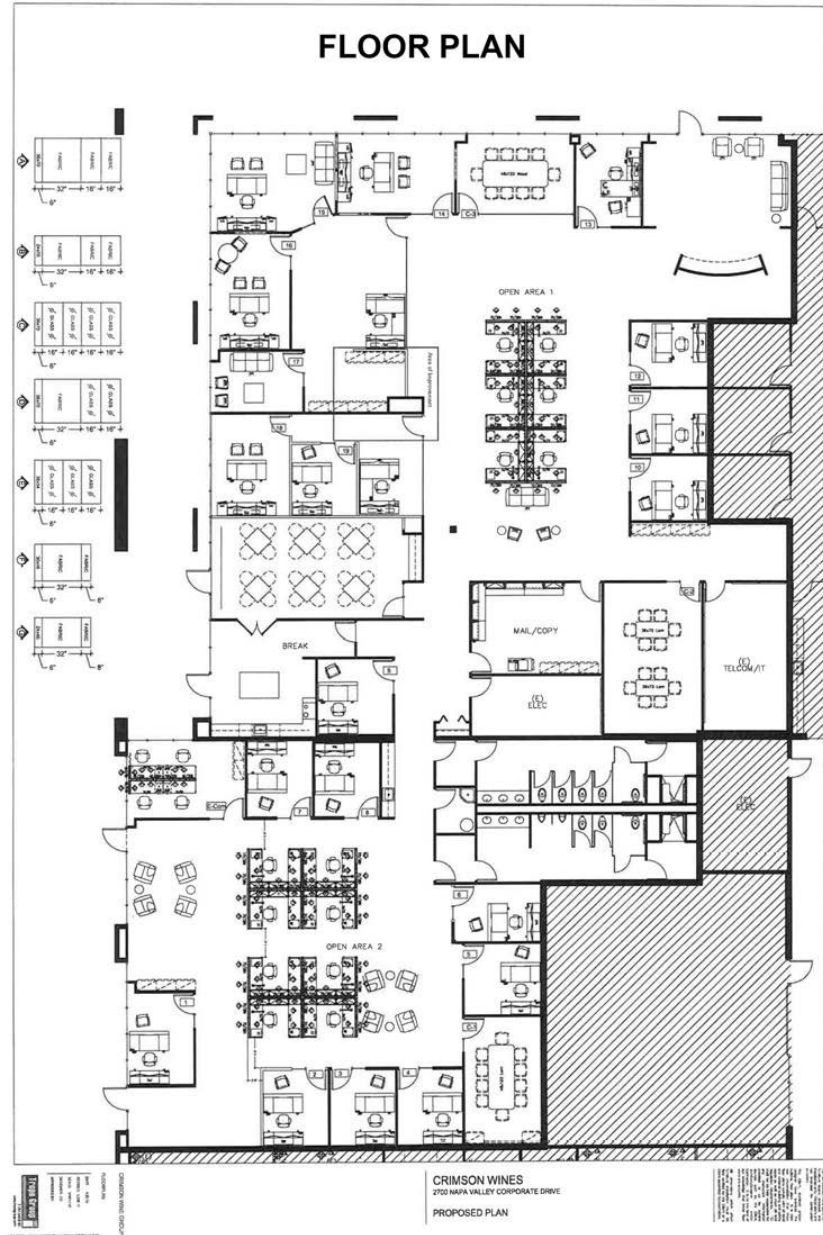
707.304.3338

[cholmes@cnapavalley.com](mailto:cholmes@cnapavalley.com)



# 2700 Napa Valley Corporate Dr., Napa

## Suite B ~ ±13,304 SF ~ \$1.25/SF/Mo. NNN



**Michael Moffett**

License #00946472

707.479.1976

[mmoffett@cnapavalley.com](mailto:mmoffett@cnapavalley.com)

1775 Lincoln Ave.  
Napa, CA 94558

**Cathy D'Angelo Holmes**

License #01355085

707.304.3338

[cholmes@cnapavalley.com](mailto:cholmes@cnapavalley.com)

