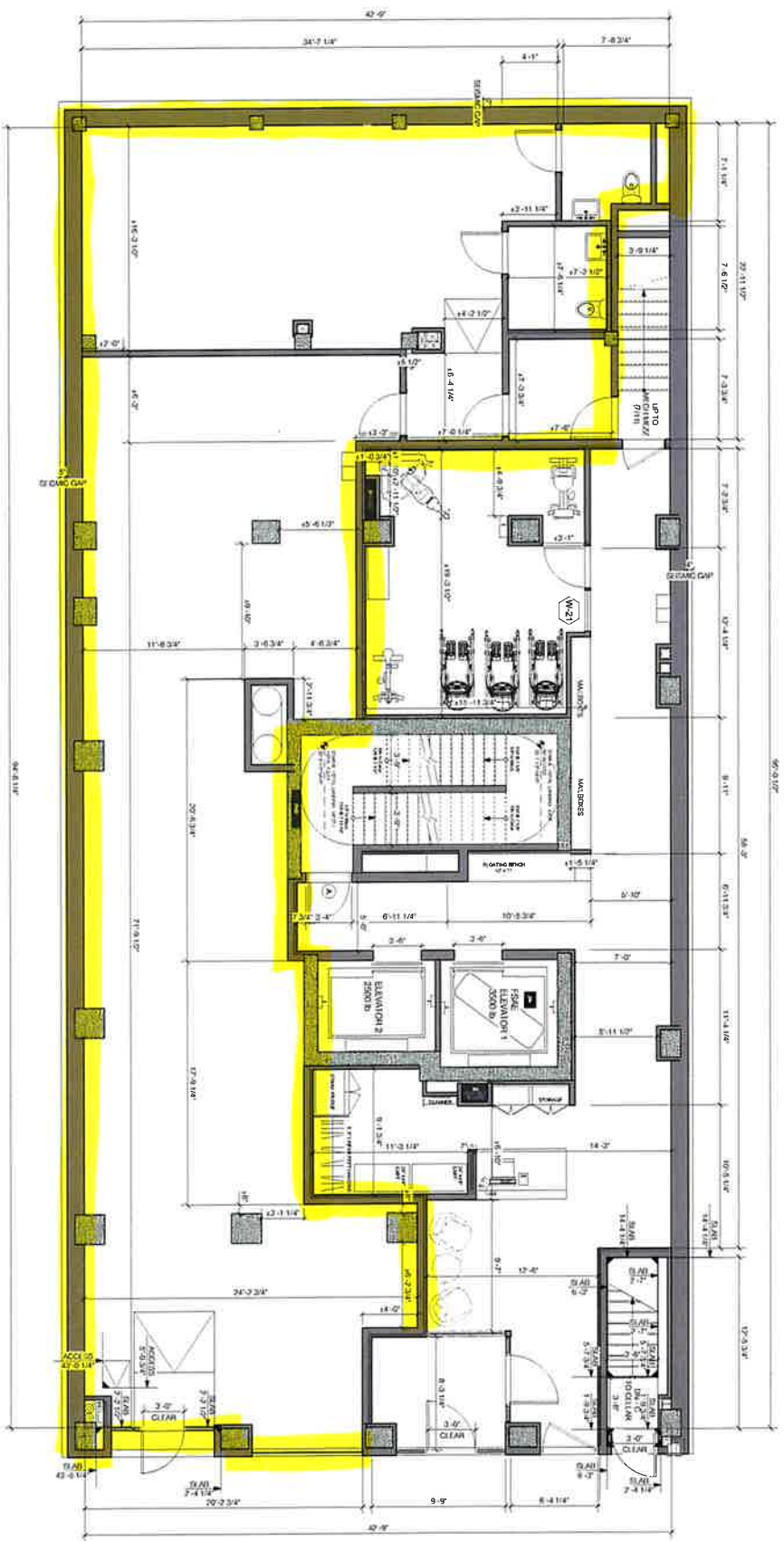


**GROUND FLOOR PLAN**  
 Scale: 1/4"=1'-0"



	<p>Zakrzewski + Hyde Architects          575 Cross Street, Suite 1C, New York, NY 10013          architects.com   212 366 0426</p>	<p><b>PROJECT:</b>          211 W 29th St          New York, NY 10013</p>	<p><b>DATE:</b>          09 SEPTEMBER          2019</p>	<p><b>DESCRIPTION:</b>          REVISED BACKGROUNDS</p>	<p><b>SCHEME:</b>  <b>BG-01</b></p>
--	--	---	---	---	---