

# FOR LEASE

Office Space  
Approx. 1,400 RSF

2732 N. Clark Street  
CHICAGO, IL 60614



## DETAILS:

Gorgeous greystone commercial building located at Lincoln Park's busiest intersection - Clark / Broadway / Diversey. 2nd floor space ideal for several commercial uses including: Office, Medical, Fitness Wellness, Education, Religious, etc.

*For more info, contact:*

Dave Schraufnagel  
(773) 430-6406  
dave@d4realtyinc.com

**D4 Realty, Inc.**

- Suite 200: Approx 1,400 RSF
- Suite has private office and private restroom
- \$23.00 per RSF, MG
- Dedicated On-site Parking available
- Next to Starbucks, Walgreens, Trader Joe's, Stan's Donuts
- .4 miles to Diversey El Station
- Abundant natural light, fronts on Clark Street
- Well maintained building
- Available immediately. Move-in ready

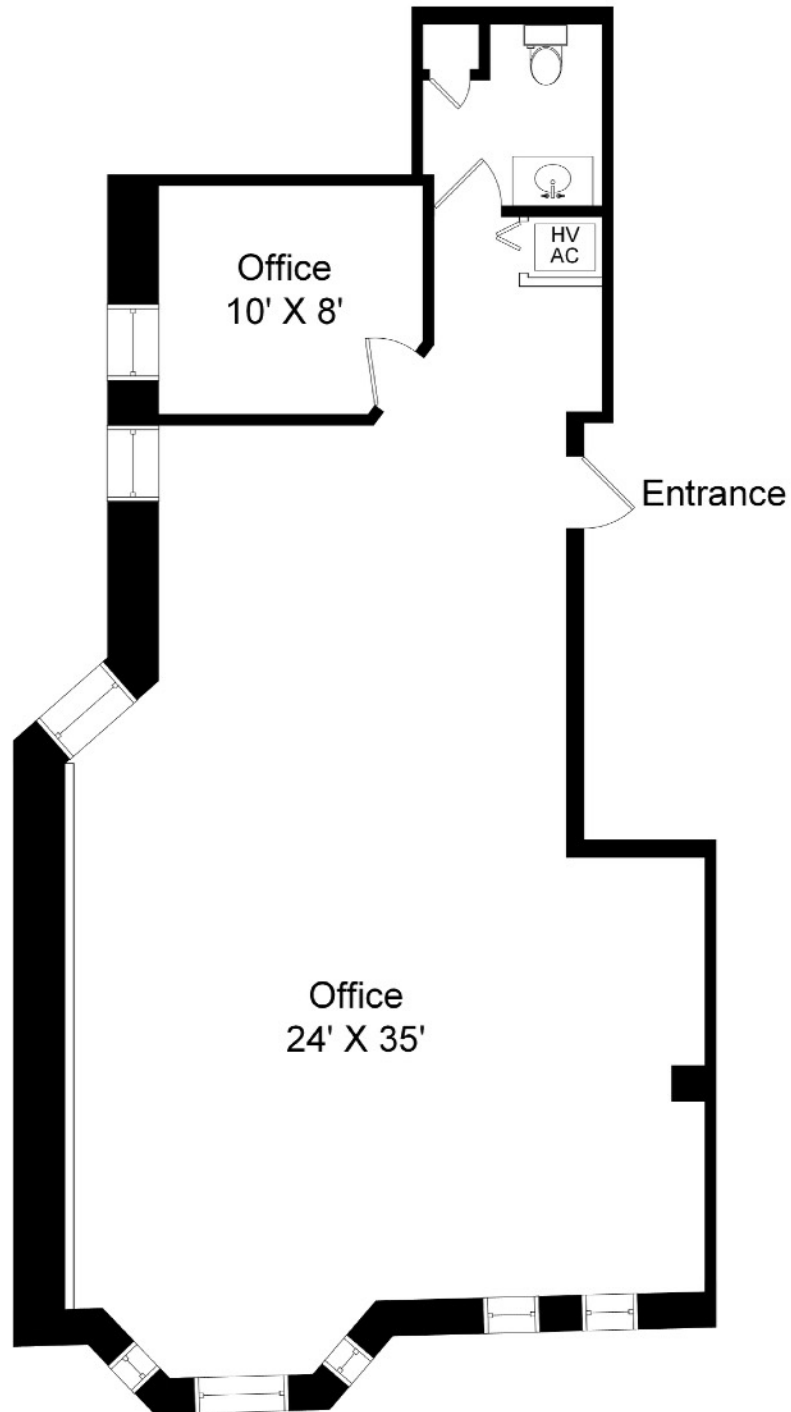


Brokerage | Consulting | Management | Acquisitions

# FOR LEASE

Office Space  
Approx. 1,400 RSF

2732 N. Clark Street  
CHICAGO, IL 60614



Brokerage | Consulting | Management | Acquisitions