

UofL HEALTH – PLAZA II

250 E Liberty Street



2nd Floor Availability:

Suite 200 | 1,435 rsf

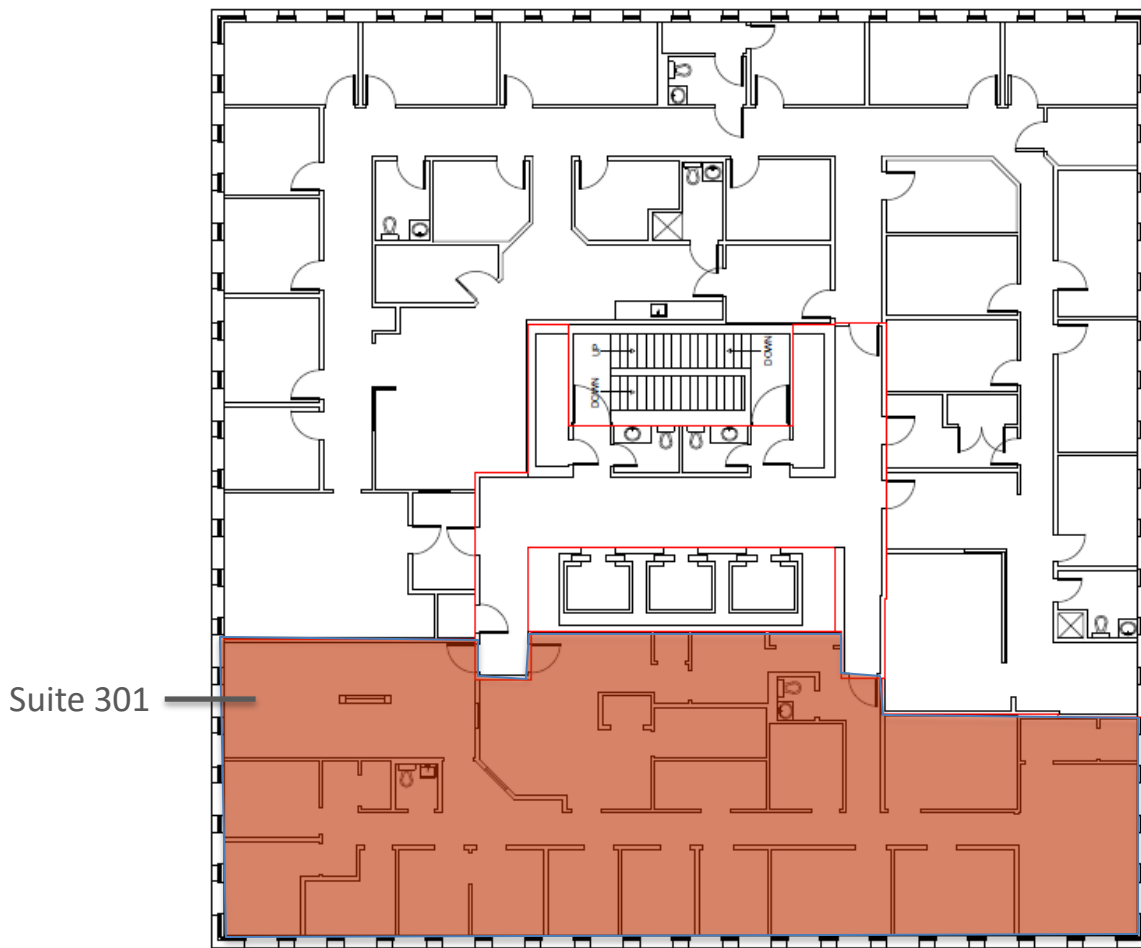


Tony Fluhr, SIOR, CCIM
Managing Director
502.429.9820 | tfluhr@ntsdevco.com

Mark Meredith, CCIM
Director of Commercial Leasing
502.429.9827 | mmeredith@ntsdevco.com

UofL HEALTH – PLAZA II

250 E Liberty Street



3rd Floor Availability:

Suite 301 | 3,435 rsf

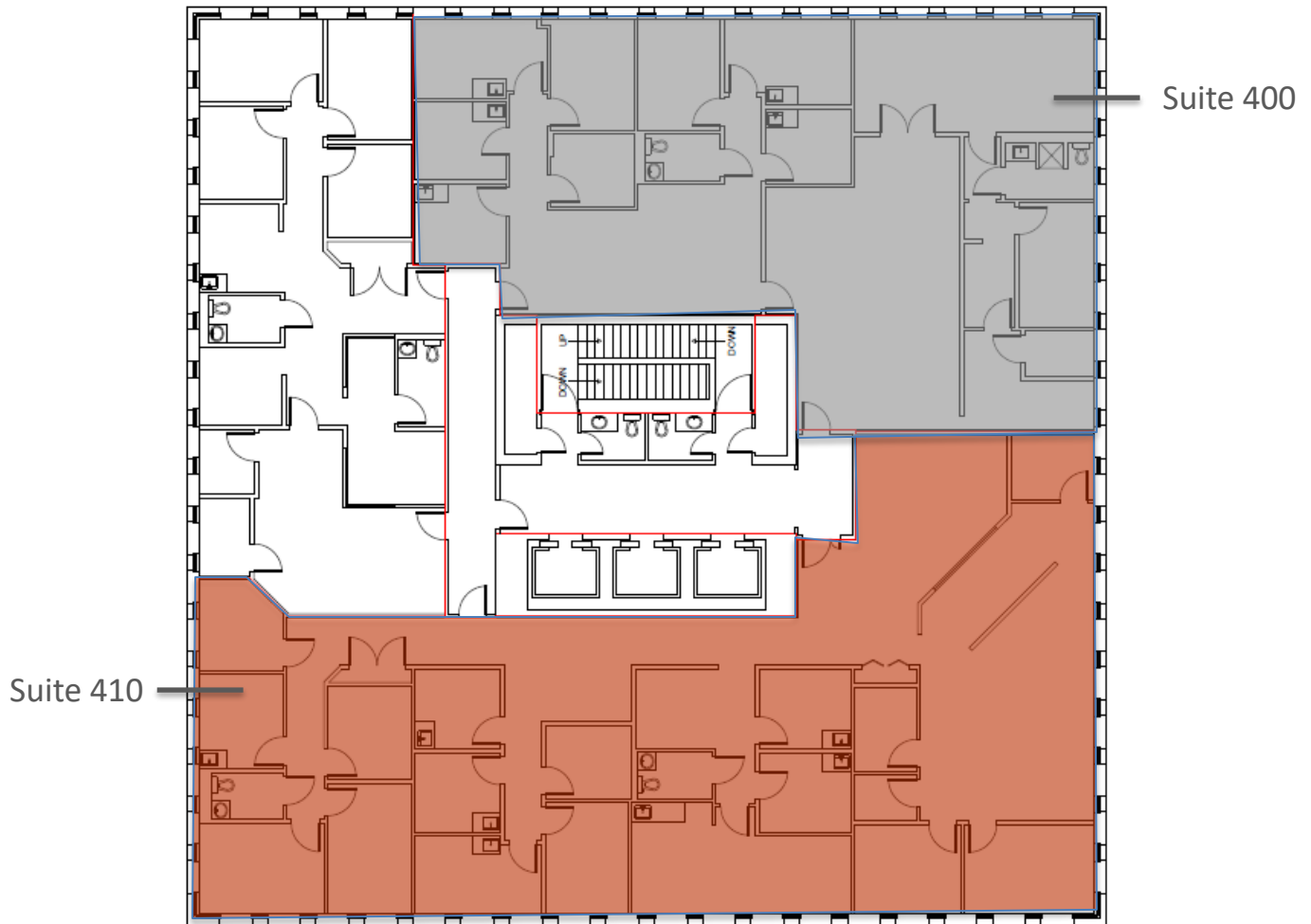


Tony Fluhr, SIOR, CCIM
Managing Director
502.429.9820 | tfluhr@ntsdevco.com

Mark Meredith, CCIM
Director of Commercial Leasing
502.429.9827 | mmeredith@ntsdevco.com

UofL HEALTH – PLAZA II

250 E Liberty Street



4th Floor Availability:

Suite 400 | 3,311 rsf

Suite 410 | 4,119 rsf



Suite 400
Click here for virtual tour



Suite 410
Click here for virtual tour

NTS

Tony Fluhr, SIOR, CCIM
Managing Director
502.429.9820 | tfluhr@ntsdevco.com

Mark Meredith, CCIM
Director of Commercial Leasing
502.429.9827 | mmeredith@ntsdevco.com

UofL HEALTH – PLAZA II

250 E Liberty Street



6th Floor Availability:

Suite 602 | 4,525 rsf

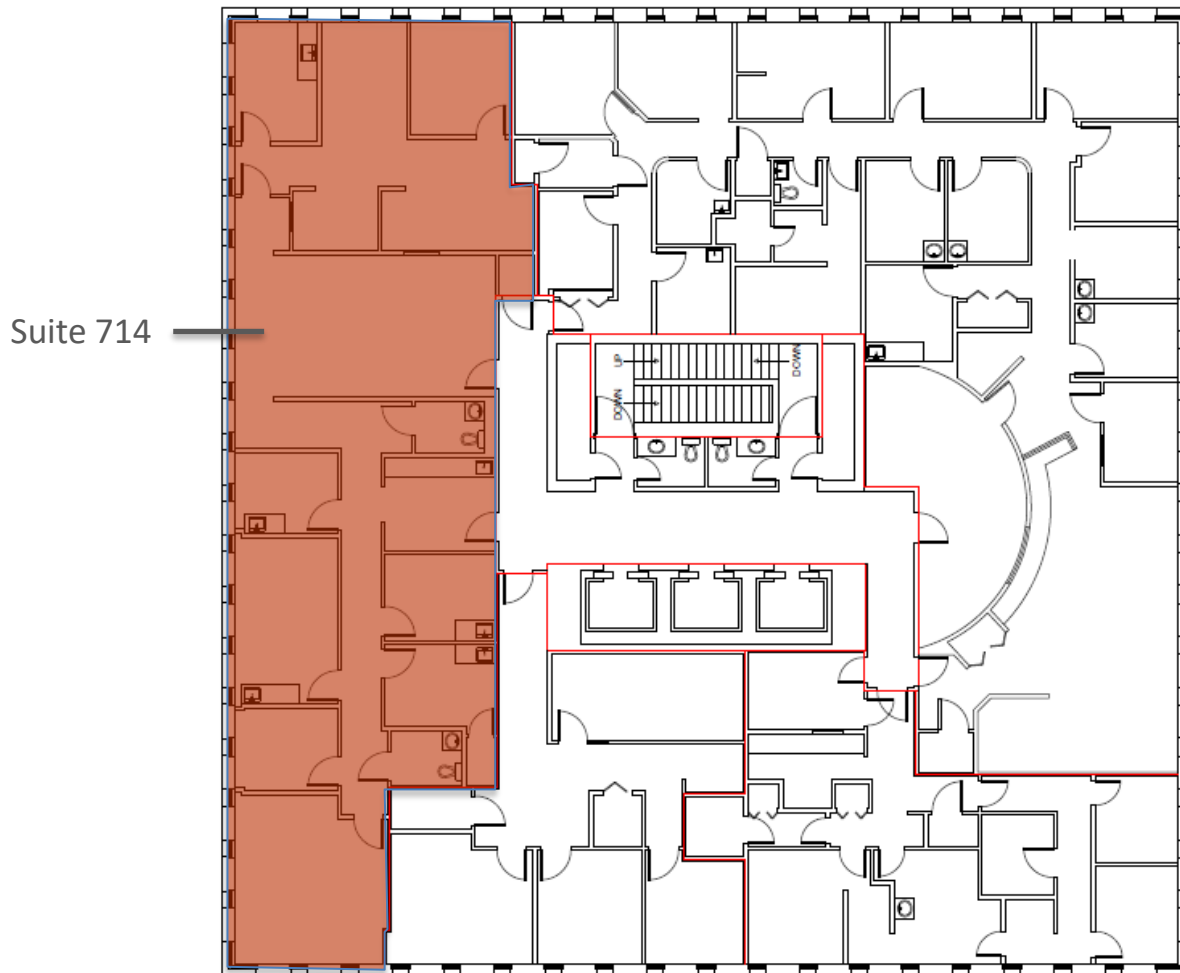


Tony Fluhr, SIOR, CCIM
Managing Director
502.429.9820 | tfluhr@ntsdevco.com

Mark Meredith, CCIM
Director of Commercial Leasing
502.429.9827 | mmeredith@ntsdevco.com

UofL HEALTH – PLAZA II

250 E Liberty Street



7th Floor Availability:

Suite 714 | 3,015 rsf

*Spec Suite



Suite 714
Click here for virtual tour

NTS

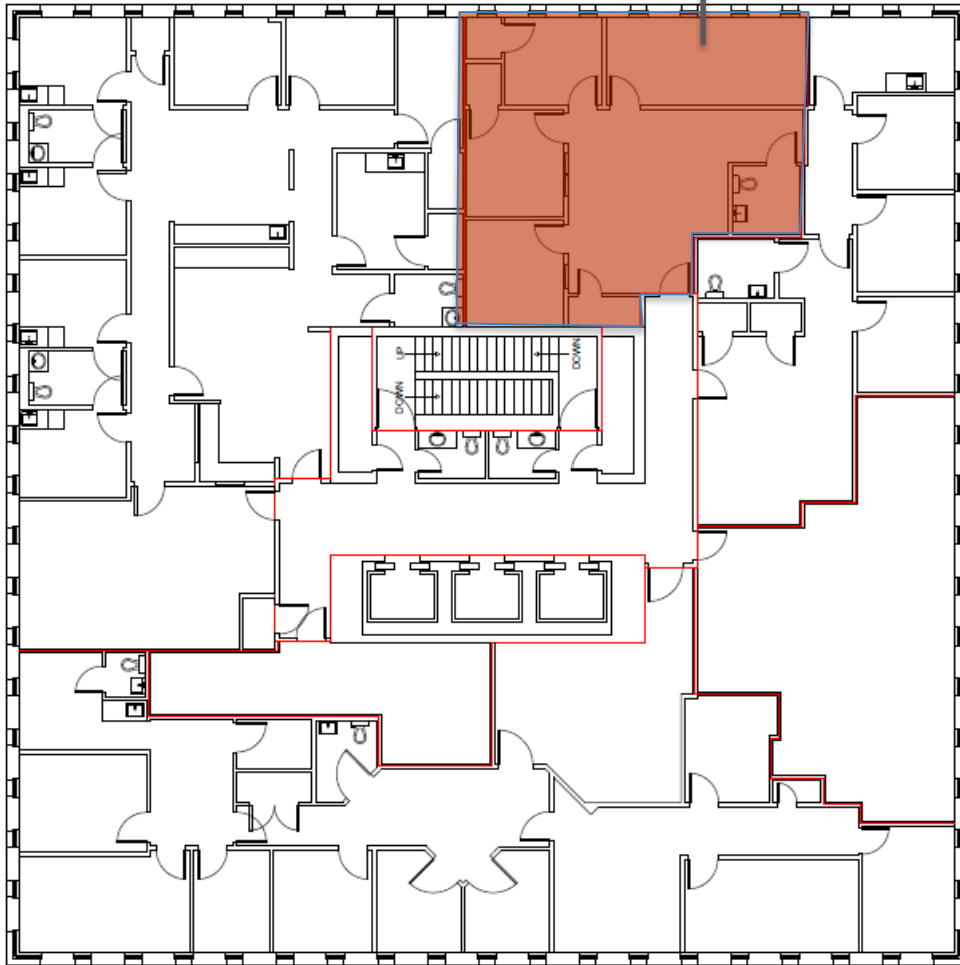
Tony Fluhr, SIOR, CCIM
Managing Director
502.429.9820 | tfluhr@ntsdevco.com

Mark Meredith, CCIM
Director of Commercial Leasing
502.429.9827 | mmeredith@ntsdevco.com

UofL HEALTH – PLAZA II

250 E Liberty Street

Suite 801



8th Floor Availability:

Suite 801 | 1,216 rsf

*Spec Suite



Suite 801
Click here for virtual tour

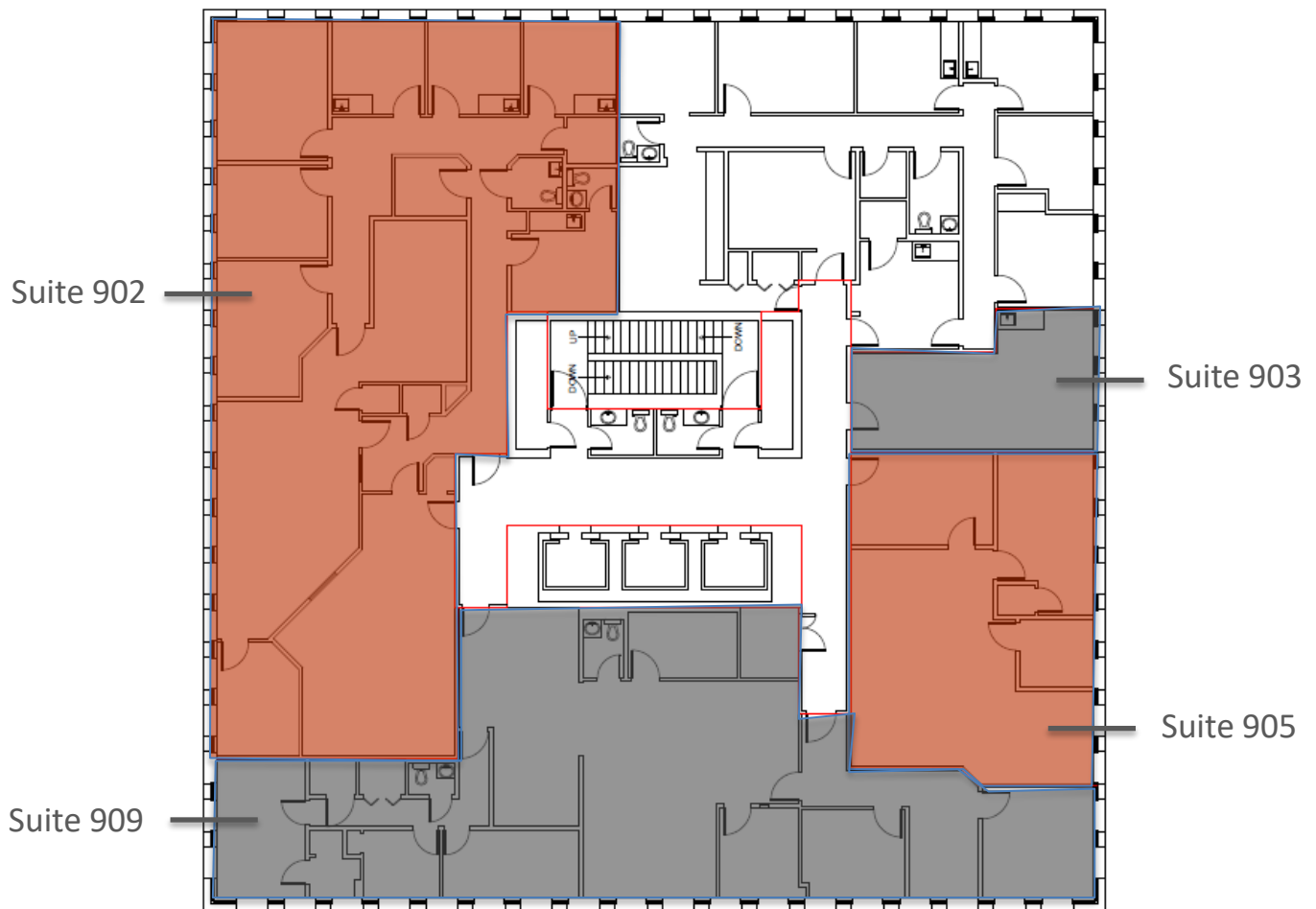
NTS

Tony Fluhr, SIOR, CCIM
Managing Director
502.429.9820 | tfluhr@ntsdevco.com

Mark Meredith, CCIM
Director of Commercial Leasing
502.429.9827 | mmeredith@ntsdevco.com

UofL HEALTH – PLAZA II

250 E Liberty Street



9th Floor Availability:

Suite 902 | 3,462 rsf

Suite 903 | 433 rsf

Suite 905 | 1,184 rsf

Suite 909 | 2,586 rsf



Suite 902
Click here for virtual tour

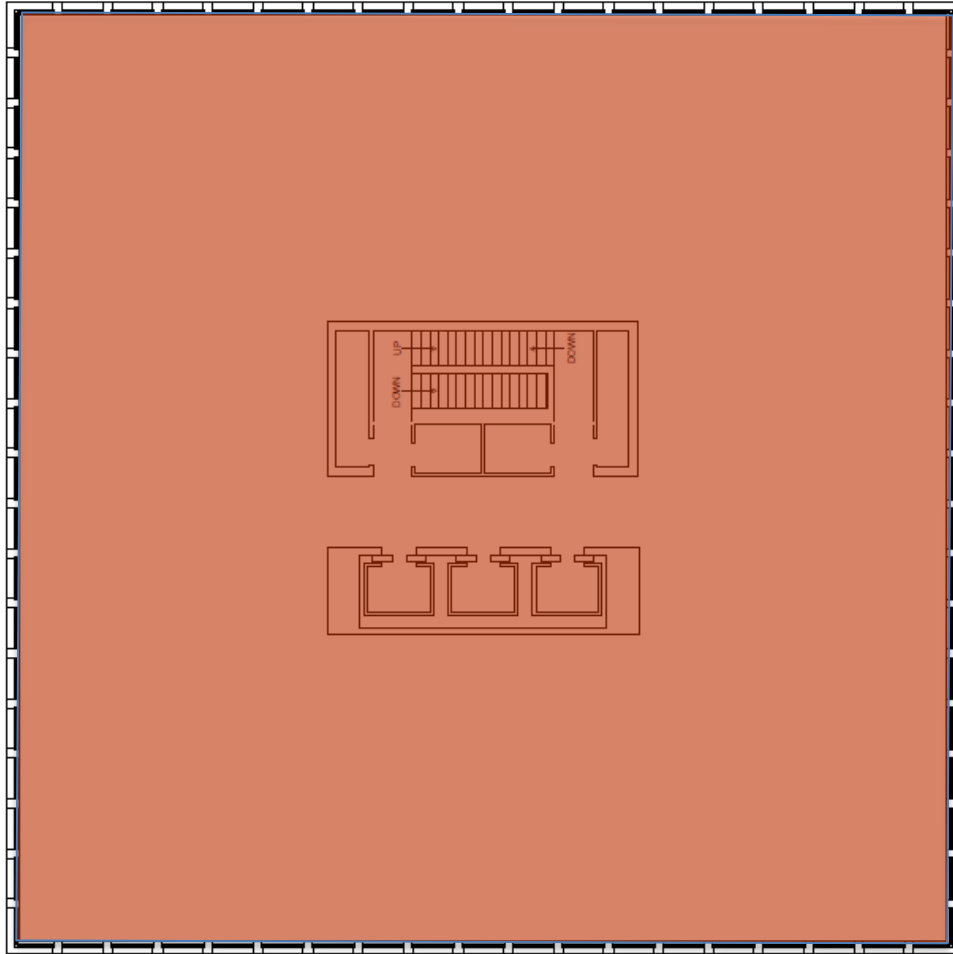


Tony Fluhr, SIOR, CCIM
Managing Director
502.429.9820 | tfluhr@ntsdevco.com

Mark Meredith, CCIM
Director of Commercial Leasing
502.429.9827 | mmeredith@ntsdevco.com

UofL HEALTH – PLAZA II

250 E Liberty Street



10th Floor Availability:

Suite 1001 | 9,871 rsf



Suite 1001

Click here for BeyondView tour



Tony Fluhr, SIOR, CCIM
Managing Director
502.429.9820 | tfluhr@ntsdevco.com

Mark Meredith, CCIM
Director of Commercial Leasing
502.429.9827 | mmeredith@ntsdevco.com