

575 Sixth Avenue

CHELSEA
NEW YORK, NY



NEWMARK

575 SIXTH AVENUE

Property Details

Location

Northwest corner of West 16th Street

Approximate Size

Ground Floor 2,477 SF

Lower Level 1,537 SF

Total 4,014 SF

Ceiling Height

Ground Floor 17 FT

Lower Level 10 FT

Frontage

30 FT on Sixth Avenue

70 FT on West 16th Street

Term

Long term

Possession

Immediate

Site Status

Currently Vacant

Rent

Upon Request

Neighbors

Bond Vet, Moscot, Restore Hyper Wellness, Think Coffee, The Hummus & Pita Co., West Elm, The Container Store, Old Navy, The Rubin Museum of Art

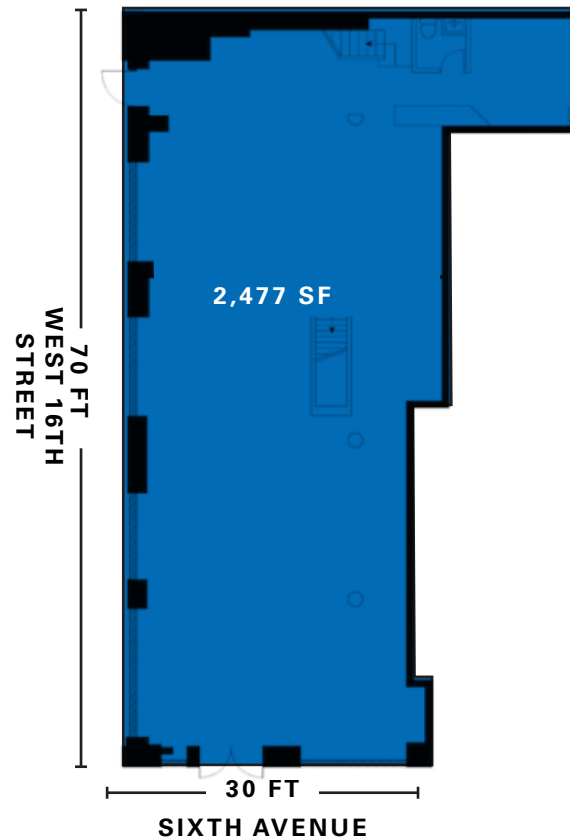
Comments

Selling Lower Level

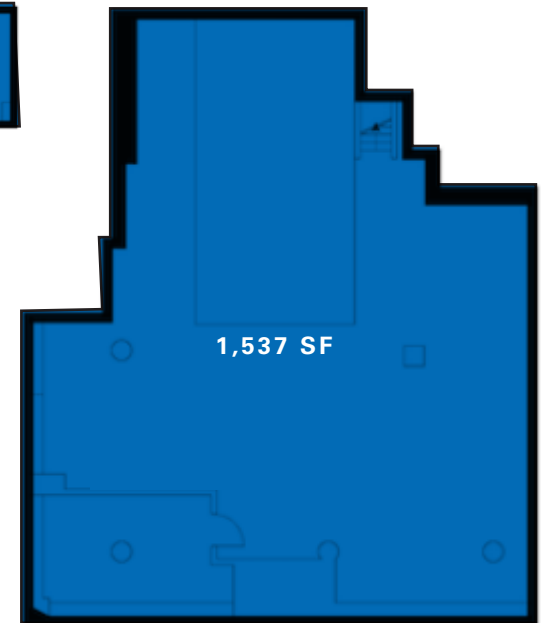
Electric cooking uses considered

Located directly in front of **F** **M** subway entrance, with additional access to the **1** **2** **3** **B** **D** **PATH** lines with over 16 million annual riders

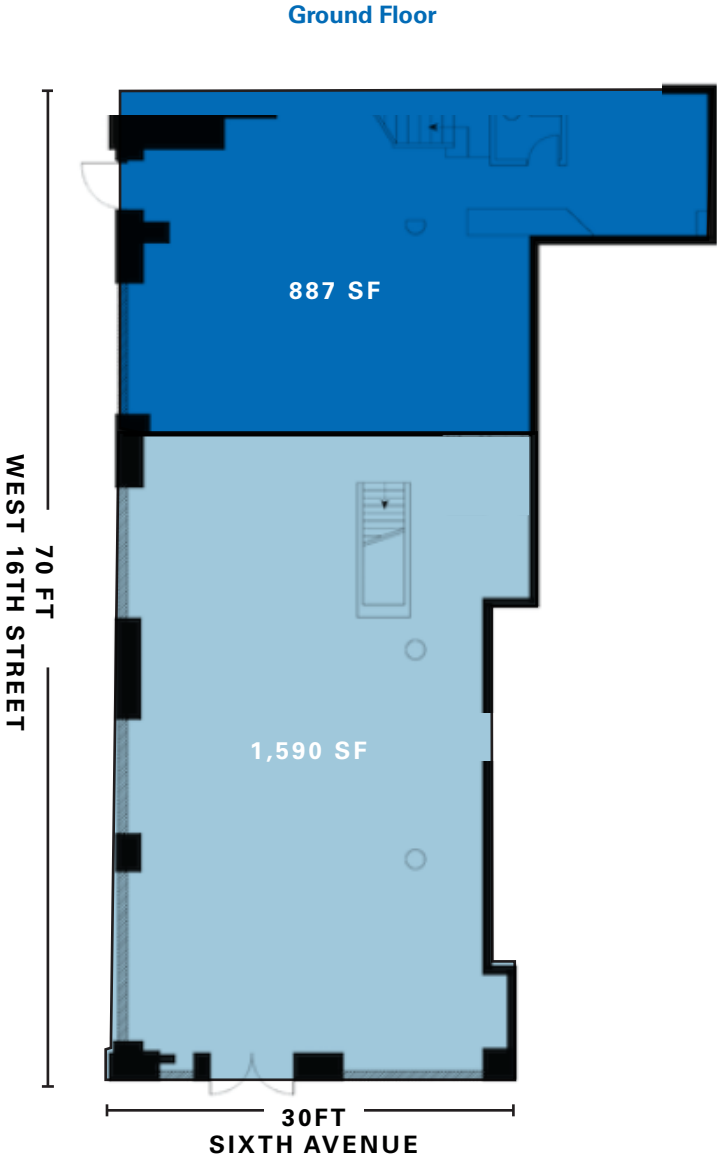
Ground Floor



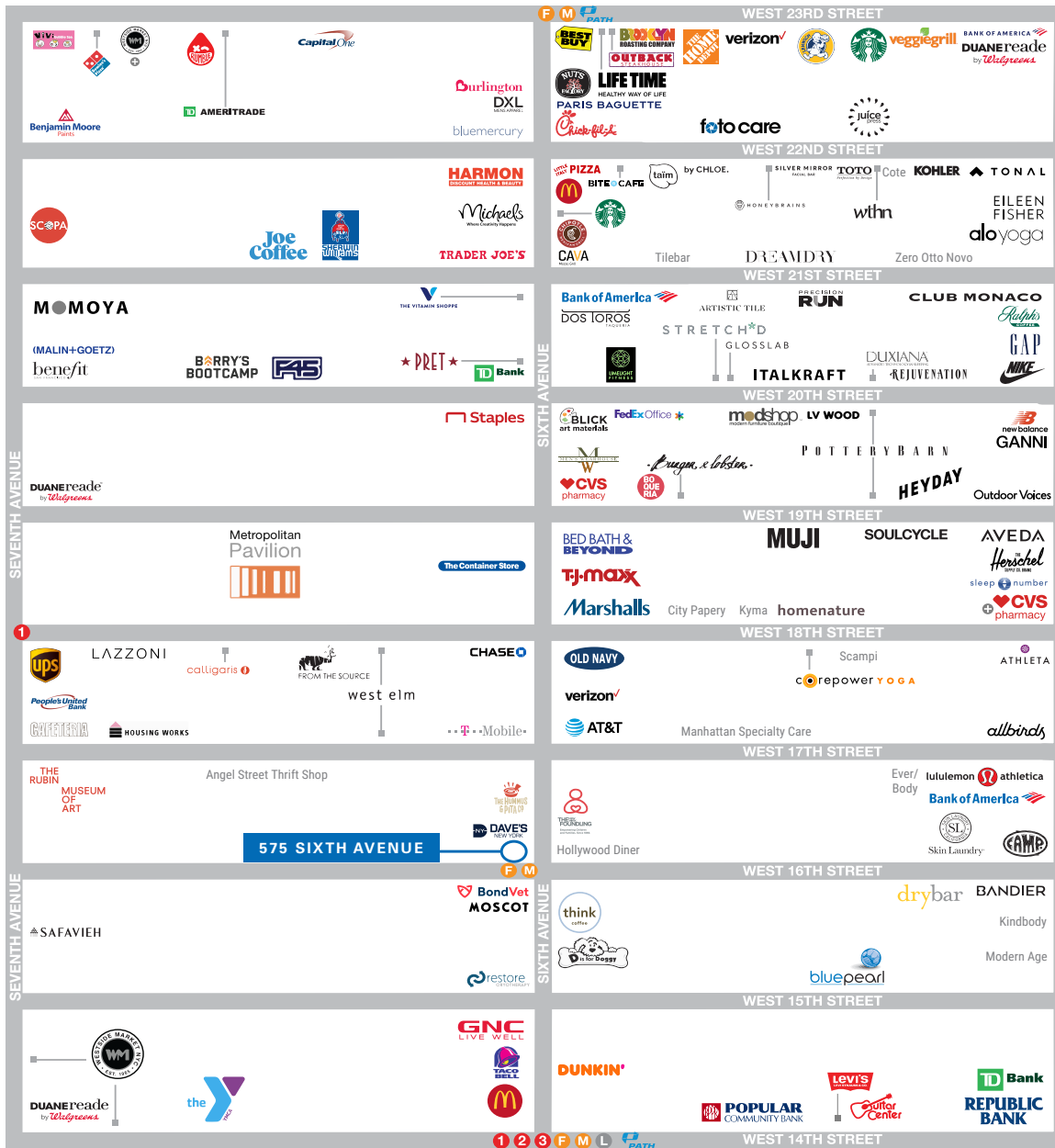
Lower Level



Proposed Division



575 SIXTH AVENUE



CONTACT

Logan Ryan
t 212-916-2936
logan.ryan@nmrk.com

Ariel Schuster
t 212-331-0132
ariel.schuster@nmrk.com
nmrk.com