



For Lease - Office / Medical / Retail Space

- Space can be demised, located near 5 Freeway off-ramp
- Gated Property, 24/7 Surveillance Cameras



LISTING AGENTS:

Ayda Kach

Managing Director

ayda@blvdreic.com

(949) 391-5670

License No 01945763

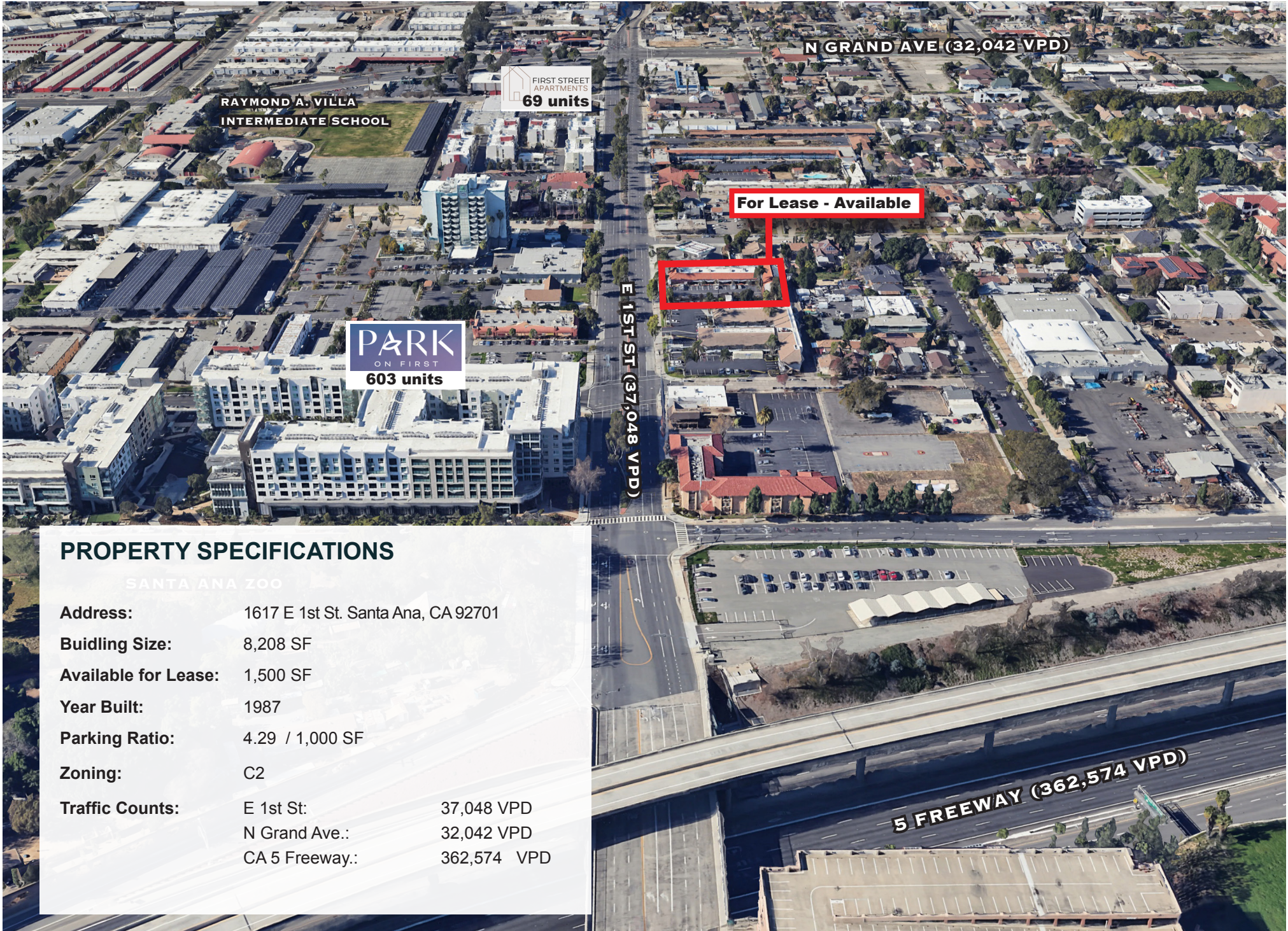
Riley Hanson

Director

riley@BLVDreic.com

(714) 906-5950

License No 02160473



N GRAND AVE (32,042 VPD)

**RAYMOND A. VILLA
INTERMEDIATE SCHOOL**

FIRST STREET
APARTMENTS
69 units

For Lease - Available

E 1ST ST (37,048 VPD)

**PARK
ON FIRST
603 units**

PROPERTY SPECIFICATIONS

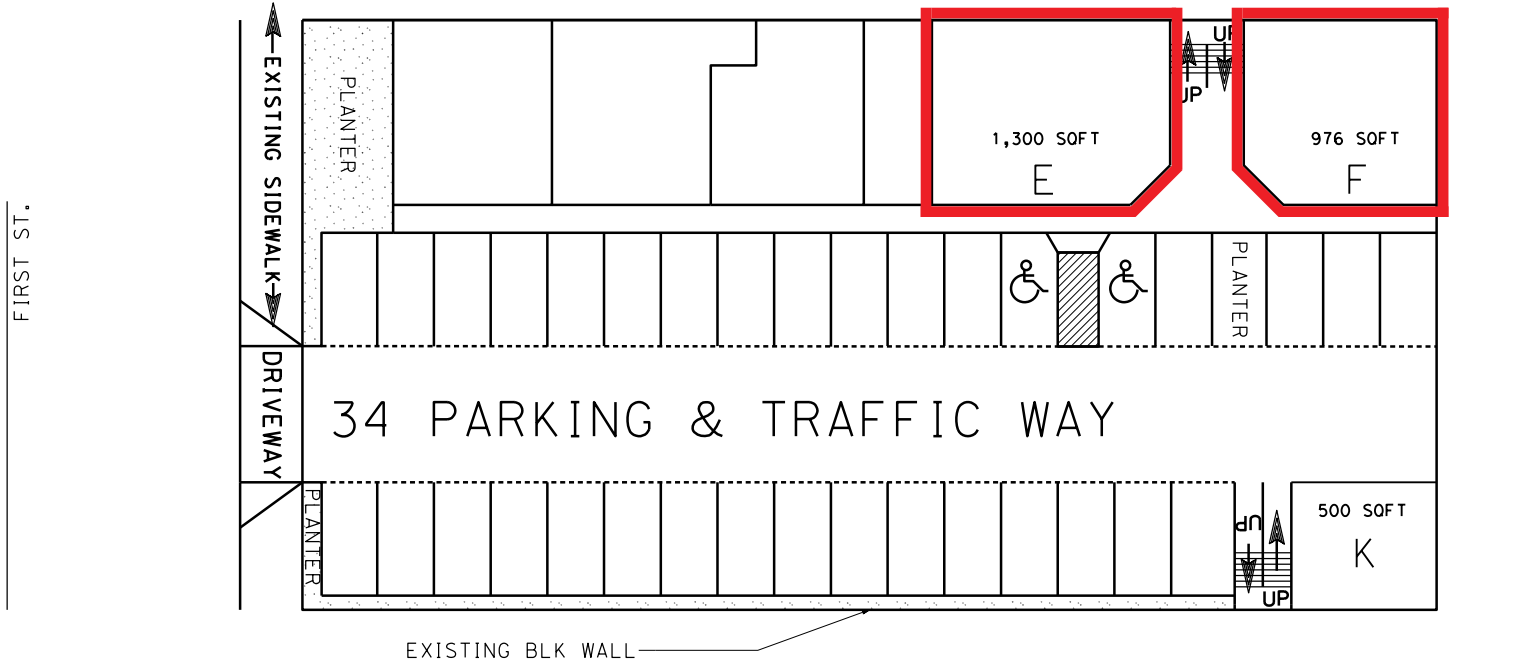
SANTA ANA ZOO

Address:	1617 E 1st St. Santa Ana, CA 92701	
Buidling Size:	8,208 SF	
Available for Lease:	1,500 SF	
Year Built:	1987	
Parking Ratio:	4.29 / 1,000 SF	
Zoning:	C2	
Traffic Counts:	E 1st St:	37,048 VPD
	N Grand Ave.:	32,042 VPD
	CA 5 Freeway.:	362,574 VPD

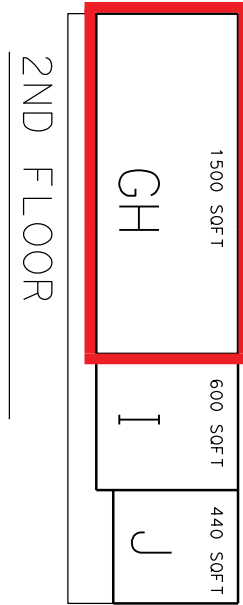
5 FREEWAY (362,574 VPD)

SITE PLAN

1617 E 1ST ST. A, SANTA ANA, CA 92701



- SITE PLAN
- Suite GH - 1,500 SF Available**
 - Suite E - 1,300 SF Available**
 - Suite F - 976 SF Available**



INTERIOR PHOTOS

