



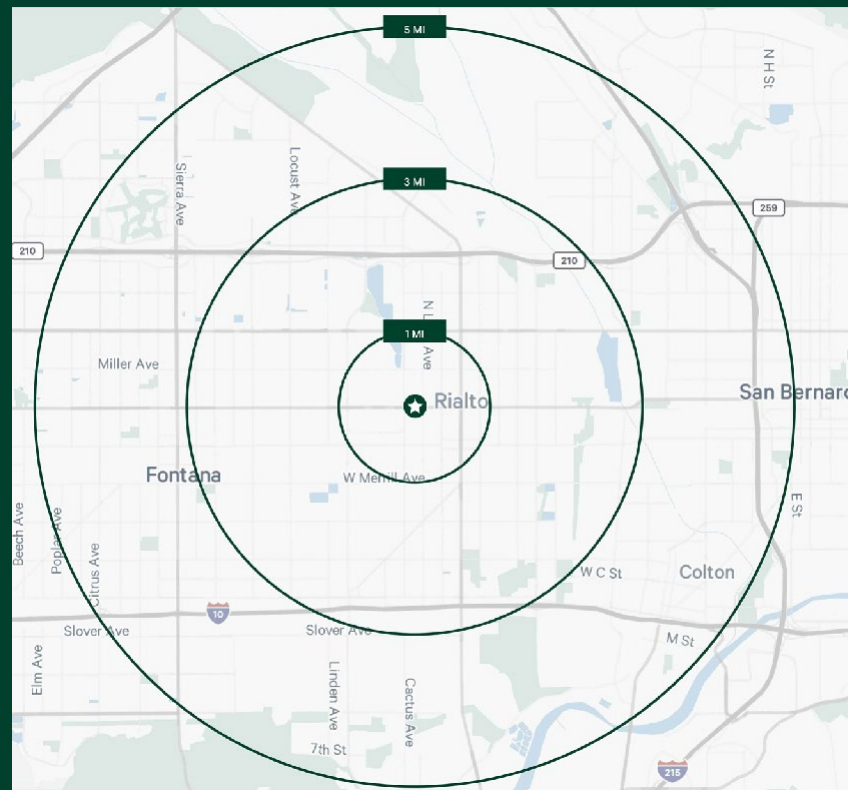
## Rialto Market Plaza | 560-592 W. Foothill Blvd, Rialto, CA 92376

### HIGHLIGHTS

- + Excellent Visibility from Foothill Blvd.
- + Join Aldi, Family Dollar, Carl's Jr, & WSS
- + Accessible Ingress/Egress from Both Directions
- + Abundant & Reciprocal Parking (5:1)
- + Ideal for Retailers Seeking High Hispanic Population
- + Rialto features a Young, Growing Population Base

### 2023 Demographics

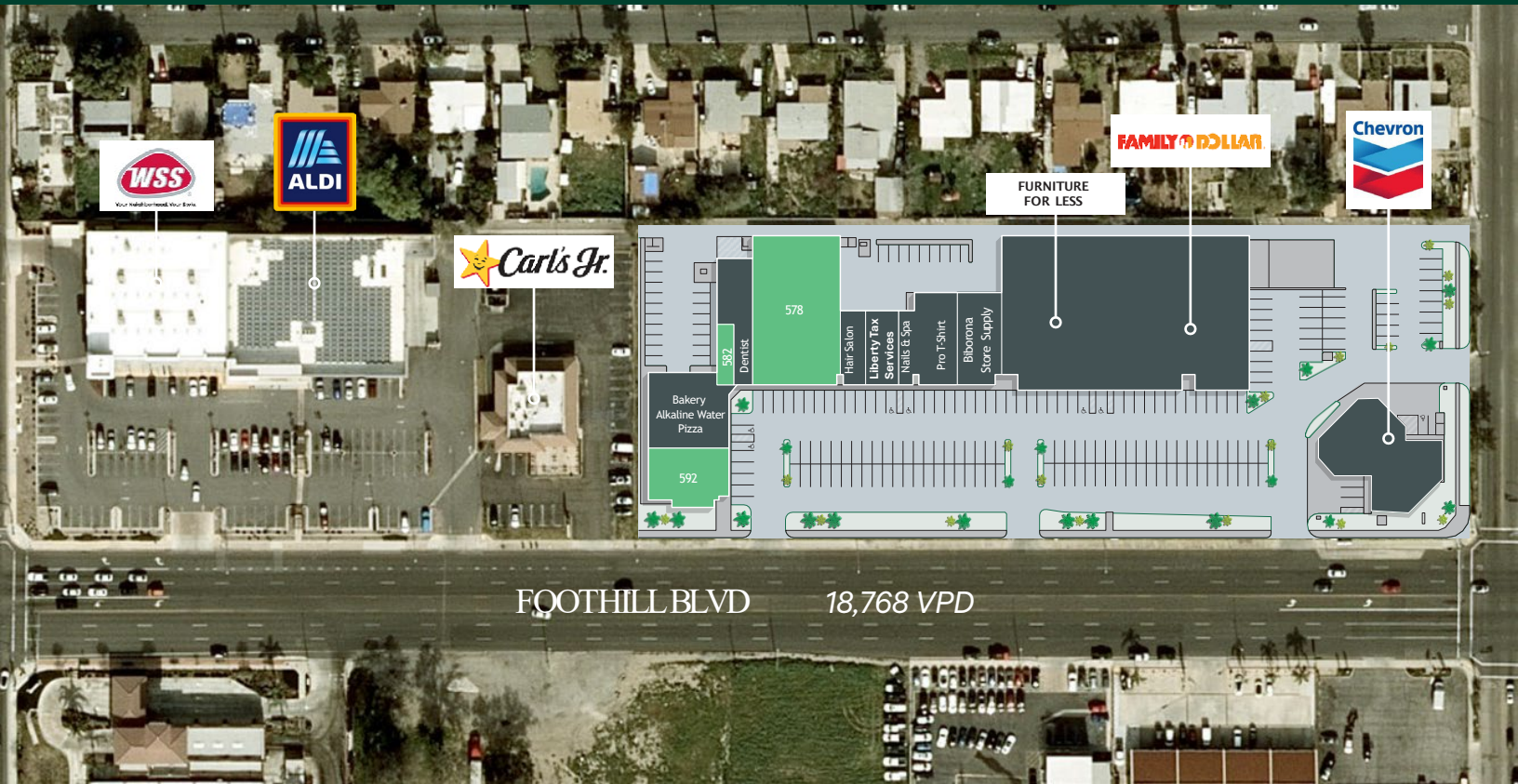
	1 Mile	3 Miles	5 Miles
Population	24,333	173,930	385,572
Households	6,504	45,891	101,528
Avg. HH Income	\$89,537	\$93,212	\$93,369
Daytime Population	19,856	136,769	325,983



## Rialto Market Plaza

560-592 W. Foothill Blvd, Rialto, CA 92376

# For Lease



Unit #	Occupant	SF
560	Biborona Store Supply	3205
564	Pro T-Shirt Outlet	2115
570	Nails & Spa	1603
572	Liberty Tax Services	1112
576	Barber Shop	929
578	<b>AVAILABLE (Jr. Box)</b>	10640

Unit #	Occupant	SF
580	Dentist	817
582	<b>AVAILABLE</b>	817
584	Bakery	1297
586	High Alkaline Water	1080
588	Pizza	1080
592	<b>AVAILABLE (End-Cap)</b>	3120

## Contact

**Jared Himes**

+1 949 344 1200

[Jared.Himes@cbre.com](mailto:Jared.Himes@cbre.com)

Lic. 01921954

© 2024 CBRE, Inc. All rights reserved. This information has been obtained from reliable sources but has not been verified for accuracy or completeness. CBRE, Inc. makes no guarantee, representation, or warranty and accepts no responsibility or liability for the accuracy, completeness, or reliability of the information contained herein. You should conduct a careful, independent investigation of the property and verify all information. Any reliance on this information is solely at your own risk. CBRE and the CBRE logo are service marks of CBRE, Inc. All other marks displayed on this document are the property of their respective owners, and the use of such marks does not imply any affiliation with or endorsement of CBRE. Photos herein are the property of their respective owners. Use of these images without the express written consent of the owner is prohibited.

# CBRE