

FOR LEASE: ±6,143 SF FORMER RESTAURANT ON 2.09 ACRES
1310 NJ-73, Mount Laurel, Burlington County, NJ 08054



PROPERTY FEATURES & DETAILS

- Former casual dining restaurant – recently renovated
- Over 39,000 vehicles/day on Route 73
- Average HHI: \$159,945 (3-mile radius)
- Population: 79,343 (3-mile radius)
- Located in front of 7 hotels totaling 650 rooms
- Liquor license available
- 142 parking spaces
- Centrally located between Mt. Laurel and Marlton trade areas

CONTACT

DAVID GOODMAN

dgoodman@equityretailbrokers.com

DIRECT 484.417.2219

KEITH SEYMOUR

kseymour@equityretailbrokers.com

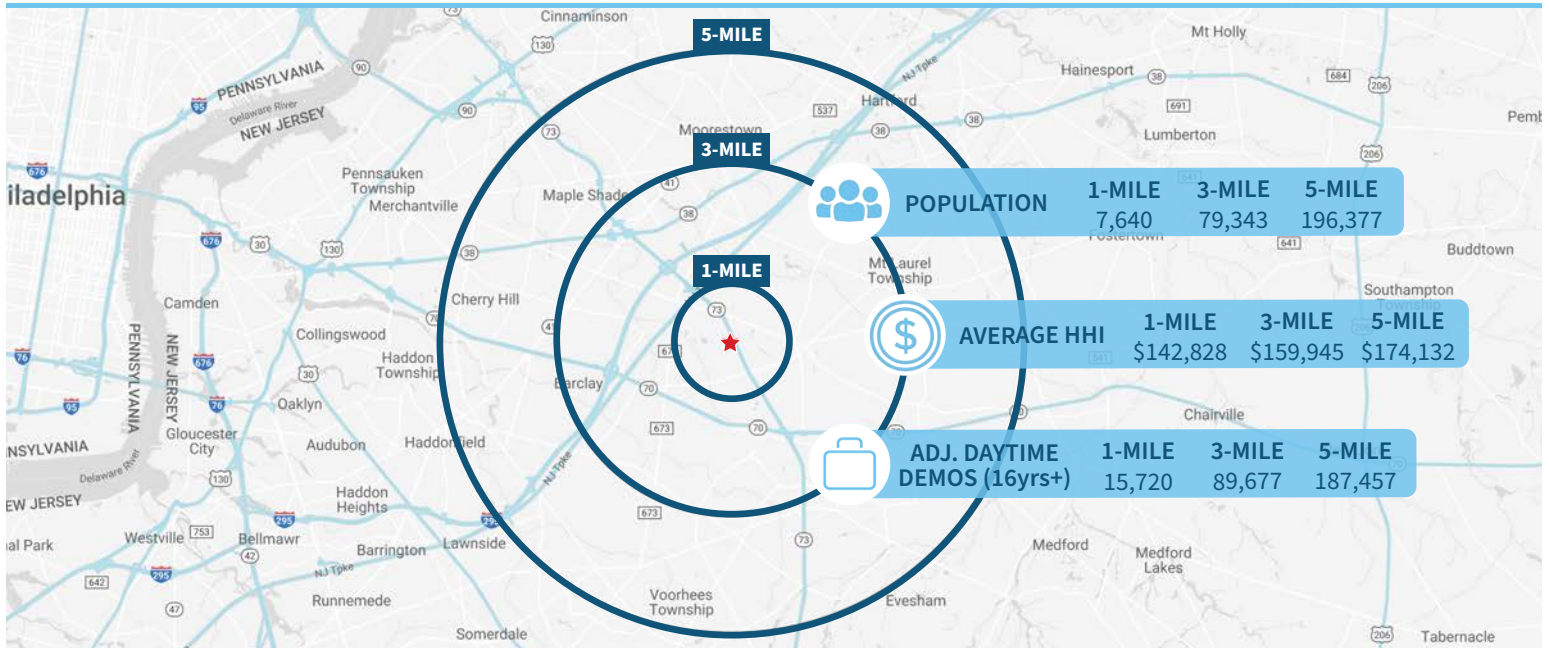
DIRECT 484.417.2249

FOR LEASE: ±6,143 SF FORMER RESTAURANT ON 2.09 ACRES
 1310 NJ-73, Mount Laurel, Burlington County, NJ 08054

EQUITY RETAIL BROKERS



Demographic Overview (1, 3, 5-mile radius)



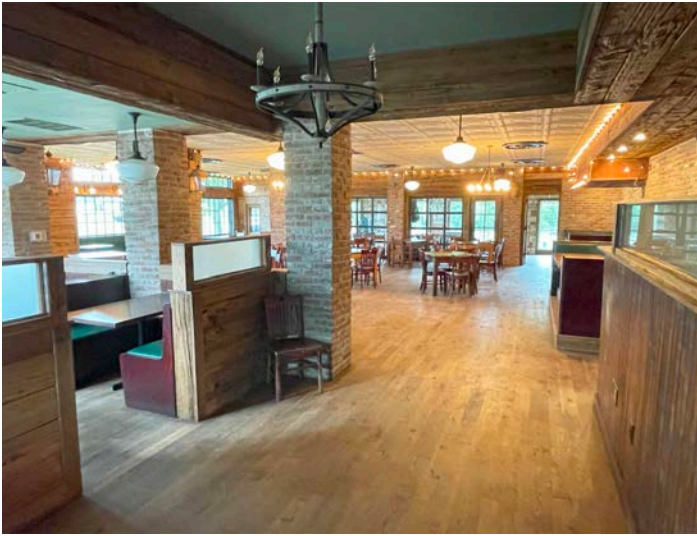
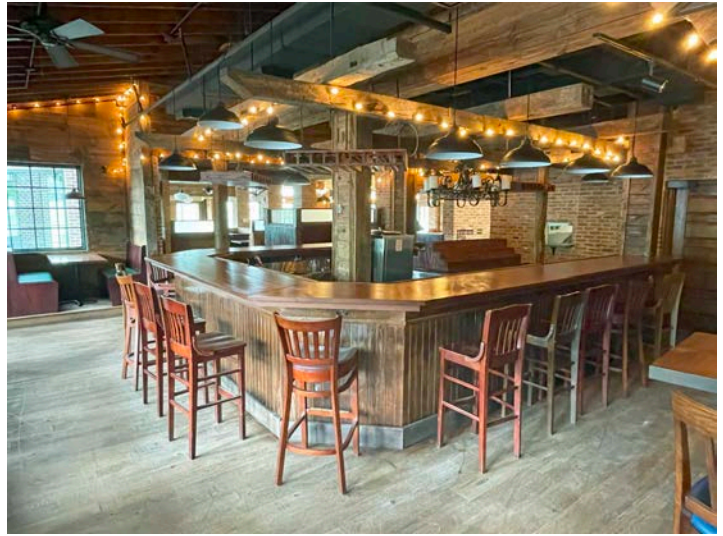
The right space. The right move.



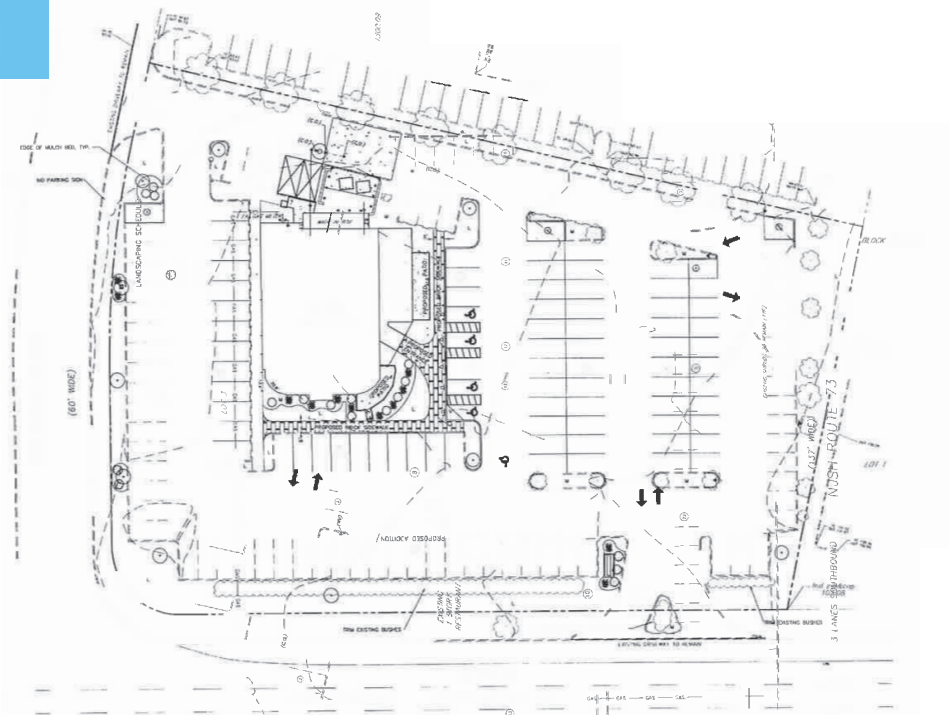
Information concerning this offering is from sources deemed reliable but no warranty is made to the accuracy thereof and it is submitted subject to errors, omissions, changes of price or other conditions, prior to sale or lease or withdrawal without notice. Equity Retail Brokers is licensed in PA, NJ, & DE. David Goodman & Keith Seymour are licensed salespersons in PA & NJ.

05/24

INTERIOR PHOTOS



SITE PLAN



MARKET AERIAL

1310 NJ-73, Mount Laurel | Burlington County, NJ



Aerial Source: Google Earth Pro & Traffic Count Source: Placer.ai ('22)

Compliments of:

Equity Retail Brokers ■ 531 W. Germantown Pike, Ste 103 ■ Plymouth Meeting, PA 19462 ■ 610.645.7700 ■ www.equityretailbrokers.com

