

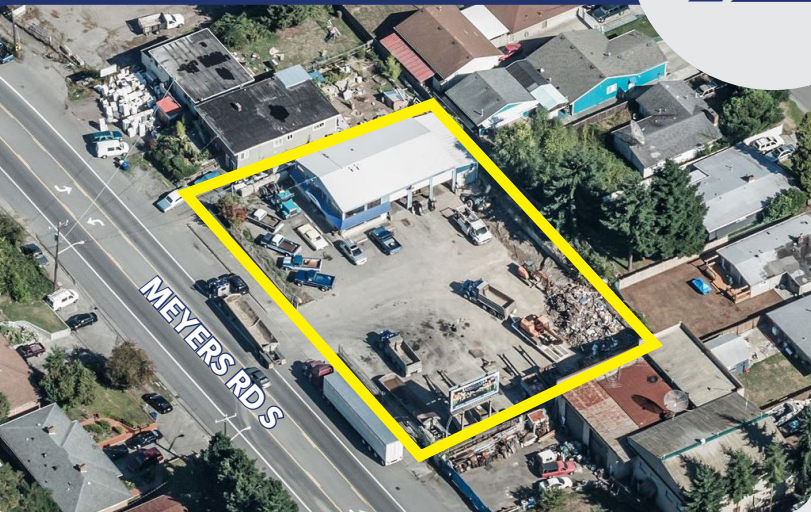
MYERS WAY BLDG

10740 MYERS WAY S
SEATTLE, WA

4,400 SF WITH YARD

FOR LEASE

STAND-ALONE
BUILDING WITH YARD



PROPERTY HIGHLIGHTS

- 4,400 SF WITH APPROX. 2,000 SF EXISTING OFFICE ON TWO FLOORS
- APPROX. 0.57 AC SITE
- STAND ALONE BUILDING WITH YARD SPACE
- OVERSIZED GRADE LEVEL LOADING
- FENCED AND SECURED LOT
- CLEAR HEIGHT 18'
- PLEASE CALL BROKERS FOR RATES

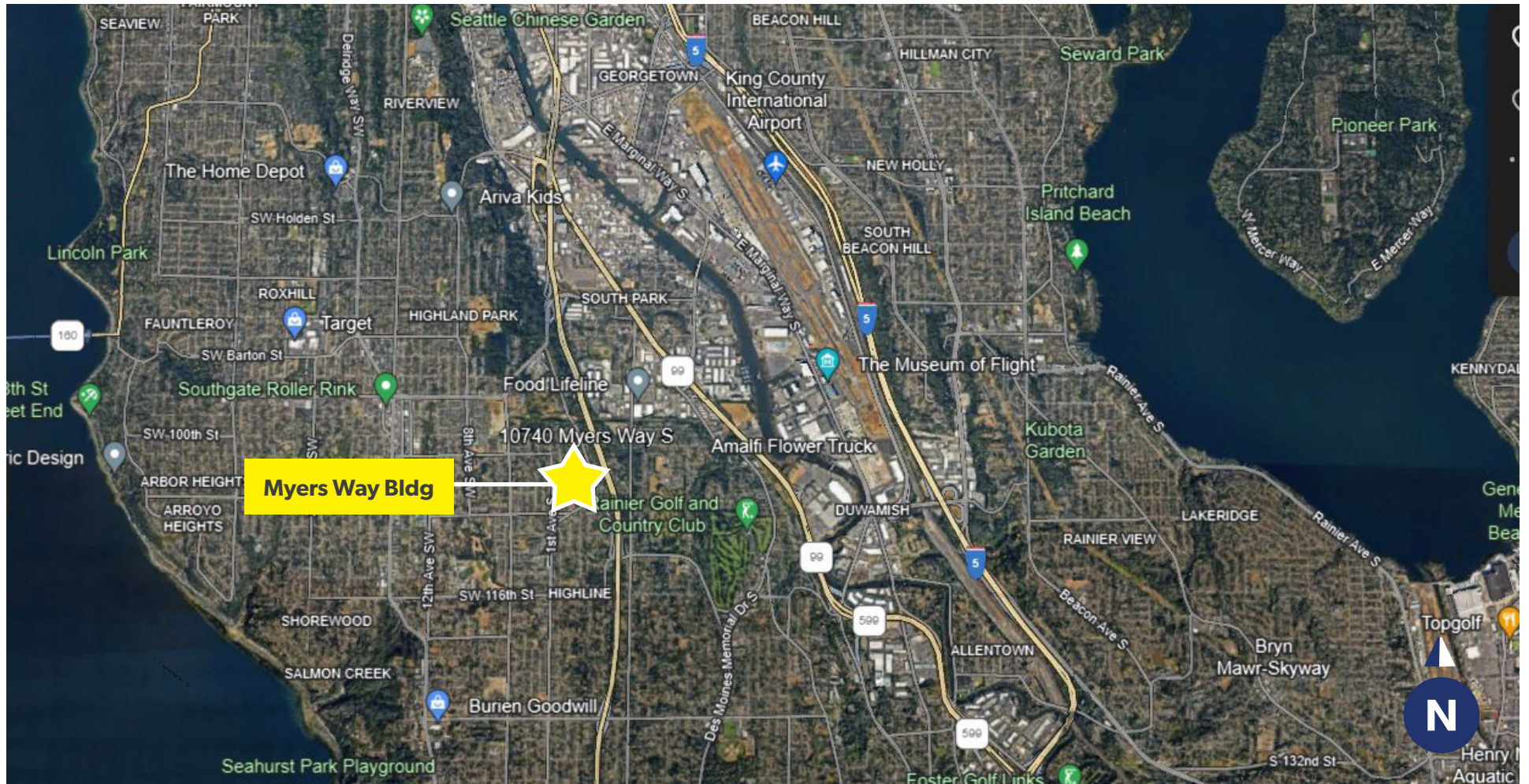
JACK CRANE
(206) 258-3159
jacklc@andoverco.com

SHANE MAHVI
(206) 336-5338
smahvi@andoverco.com

JEFF CRANE
(206) 336-5336
jcrane@andoverco.com

 **THE ANDOVER
COMPANY, INC.**
CORFAC INTERNATIONAL

AERIAL VIEW



The information contained herein has been obtained from reliable sources, but is not guaranteed. A prospective buyer/tenant should verify each item relating to this property and all information contained herein.

JACK CRANE
(206) 258-3159
jacklc@andoverco.com

SHANE MAHVI
(206) 336-5338
smahvi@andoverco.com

JEFF CRANE
(206) 336-5336
jcrane@andoverco.com

 **THE ANDOVER
COMPANY, INC.**
CORFAC INTERNATIONAL