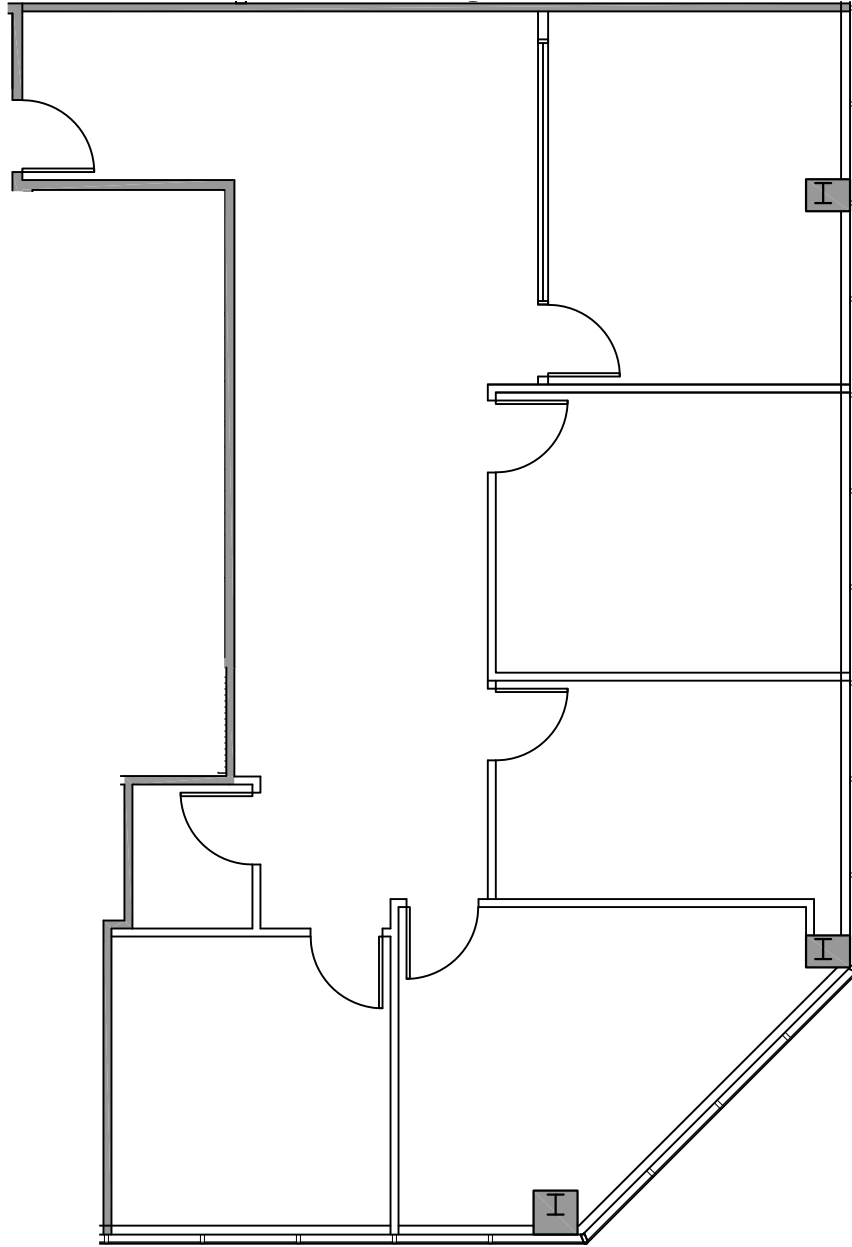


N:\Project files\Projects\99-00-01-02\347.00 Gateway Corporate Center - DB\347.01 As-Built - 21660 Copley Drive\347.01 As-Built - 21660 Copley Drive - 2nd Floor.dwg, 1/24/2023 1:55:37 AM



SCALE: 1/8"=1'-0"



INTERIOR ARCHITECTURE + SPACE PLANNING
12 MAUCHLY, SUITE E | CDLDESIGNGROUP.COM
IRVINE, CA 92618 | P: 949.679.6456

SUITE 210

GATEWAY CORPORATE CENTER
21660 COPLEY DRIVE
DIAMOND BAR, CA
1,662 R. SQ. FT.

THE ARCHITECT/DESIGNER ASSUMES NO RESPONSIBILITY FOR THE CONTRACT BIDS MADE FROM THIS DRAWING,
GOVERNING AUTHORITY REVIEW COMMENTS AND INTERPRETATIONS HAVE NOT BEEN ADDED TO THIS DRAWING.

PLAN LAYOUT SUBJECT TO FIELD CONDITIONS, FIELD CONDITIONS MAY DIFFER FROM PLAN AS SHOWN. ALL ROOM SIZES ARE APPROXIMATE. ALL INFORMATION REPRESENTED ON THIS DRAWING IS BELIEVED TO BE ACCURATE. HOWEVER, TENANT SHOULD VERIFY ALL PERTINENT INFORMATION PRIOR TO COMMITTING TO A LEASE. THIS PLAN IS NOT INTENDED FOR CONSTRUCTION PURPOSES. ANY FURNITURE OR FIXTURES REPRESENTED ON PLAN ARE TO BE PROVIDED BY TENANT AND ARE NOT INTENDED AS PART OF IT.