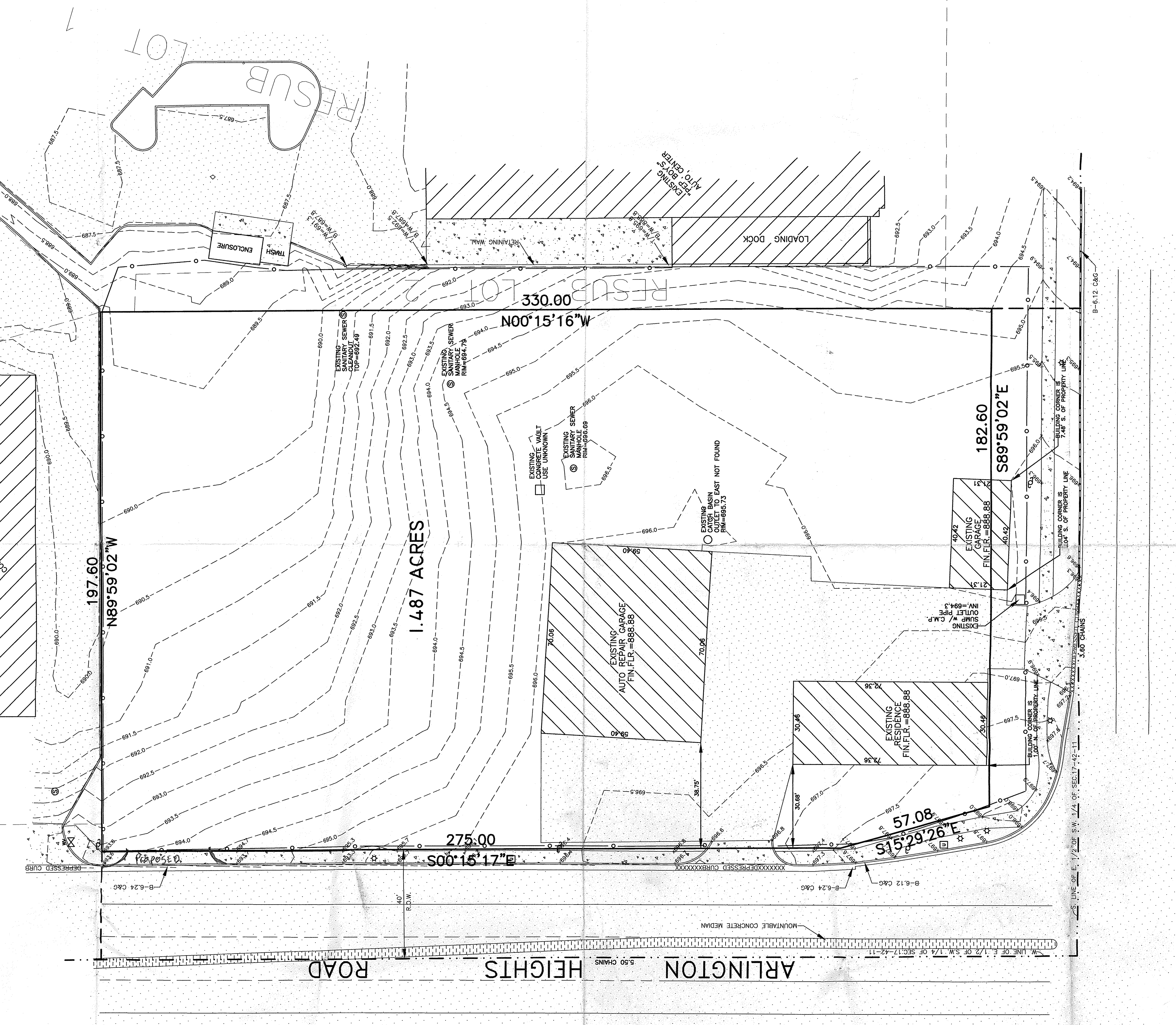
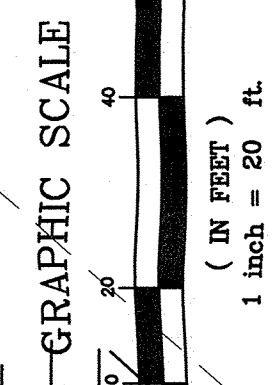


- LEGEND -**
- UTILITY POLE
 - TRAFFIC UTILITY VAULT
 - MANHOLE
 - ☆ LIGHT POST
 - ⊗ WATER VALVE
 - FENCE
 - ▨ BITUMINOUS PAVEMENT
 - ▩ CONCRETE WALK

NOTE:
 DUE TO THE STORING OF AUTOMOBILE WRECKAGE, ALL IMPROVEMENTS
 SHOWN ON THIS MAP ARE SUBJECT TO CHANGE. IMPROVEMENTS SHOWN HEREON
 ARE PER FIELD LOCATION AND MEASUREMENT.

ALTA/ACSM LAND TITLE SURVEY

THE WEST 3.60 CHAINS OF THE SOUTH 5.50 CHAINS (EXCEPT THAT PART TAKEN
 FOR ROADS) OF THE EAST HALF OF THE SOUTH-WEST QUARTER OF SECTION 17,
 TOWNSHIP 42 NORTH, RANGE 11 EAST OF THE THIRD PRINCIPAL MERIDIAN,
 IN COOK COUNTY, ILLINOIS.



PALATINE ROAD

W.C. DOLAND ENGINEERING, INC.
 -CIVIL ENGINEERING ~ LAND PLANNING ~ LAND SURVEYING-
 285 WEST DUNDEE ROAD
 PALATINE, ILLINOIS 60074
 (847) 991-5088
 (847) 934-3427 FAX

TO:
 THIS IS TO CERTIFY THAT THIS MAP OR PLAT AND THE SURVEY ON WHICH IT IS
 BASED WERE MADE IN ACCORDANCE WITH THE STANDARD DETAIL AND
 REQUIREMENTS FOR ALTA/ACSM TITLE SURVEYS AS ESTABLISHED AND
 ADOPTED BY ALTA, ACSM AND NSPS IN 1999, AND (ii) PURSUANT TO THE ACCURACY
 STANDARDS AS ADOPTED BY ALTA, NSPS AND ACSM AND IN EFFECT ON THE DATE
 OF THIS CERTIFICATION.

DATE: November 27, 2001
 M.C. Doland
 ILLINOIS PROFESSIONAL LAND SURVEYOR No. 1746