



FOR SALE
180 NW Hwy. 101
Waldport, Oregon

Description: The building is located at the SW corner of Hwy. 101 & Alsea Hwy. 34, the busiest intersection in Waldport. The mixed use building contains a ground floor retail / commercial space of approximately 5,073sf and (2) apartments on the second level. The building is currently fully rented but at rental rates substantially below market. Please refer to Agent for additional information.

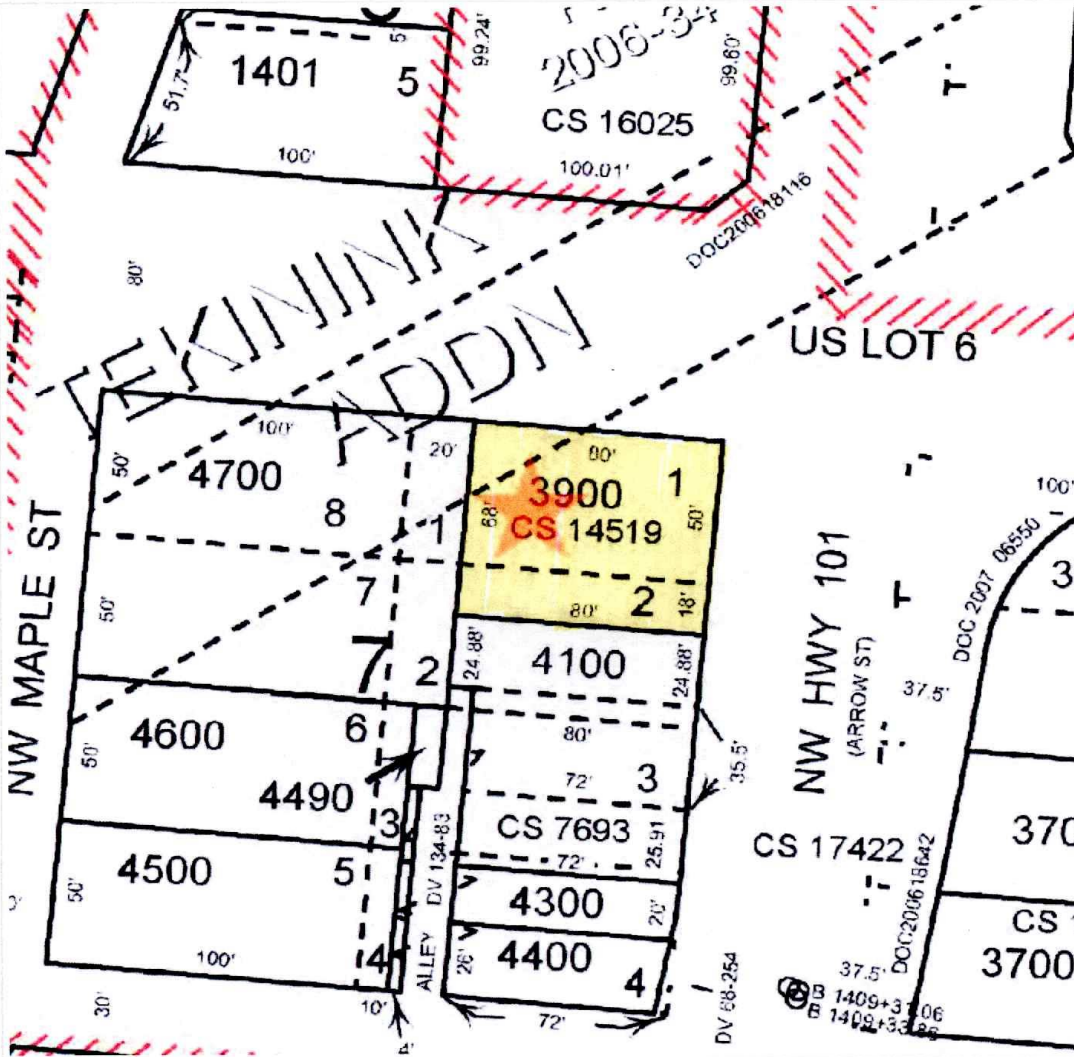
Asking Price: **\$1,150,000**

Agent:

*Alan Wells, CCIM
Commercial Associates /
Wells Investment Properties, LLC
PO Box 8250
Coburg, OR 97408
Cell phone: (541) 990-9613
E-mail: alan@commercialassociates.org*

PLAT MAP

Assessor Map



Parcel ID: R205186

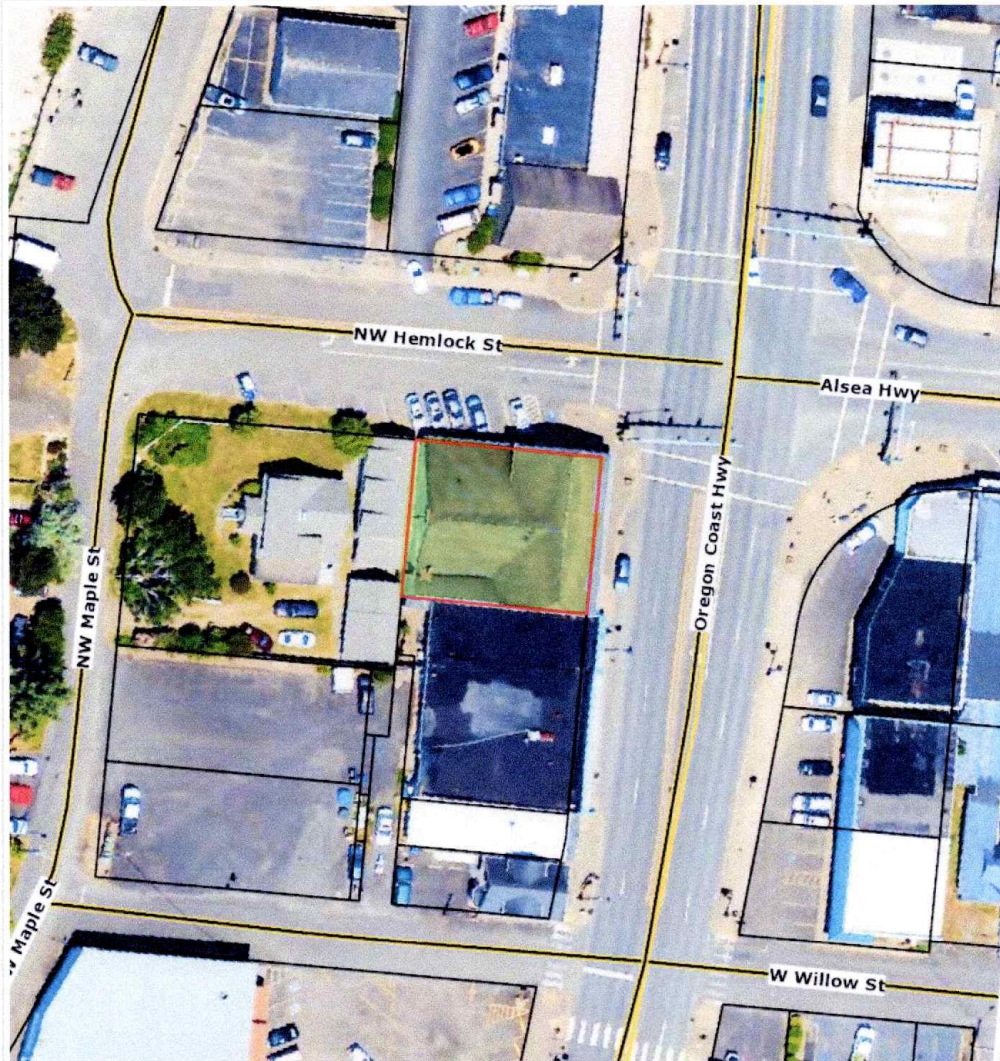
Site Address: 180 NW Hwy 101

Sentry Dynamics, Inc. and its customers make no representations, warranties or conditions, express or implied, as to the accuracy or completeness of information contained in this report.

Western Title & Escrow

AERIAL PHOTO

Aerial Map



Parcel ID: R205186

Sentry Dynamics, Inc. and its customers make no representations, warranties or conditions, express or implied, as to the accuracy or completeness of information contained in this report.


Western Title & Escrow