

CASCADE PROFESSIONAL PARK RETAIL/OFFICE CONDOMINIUM

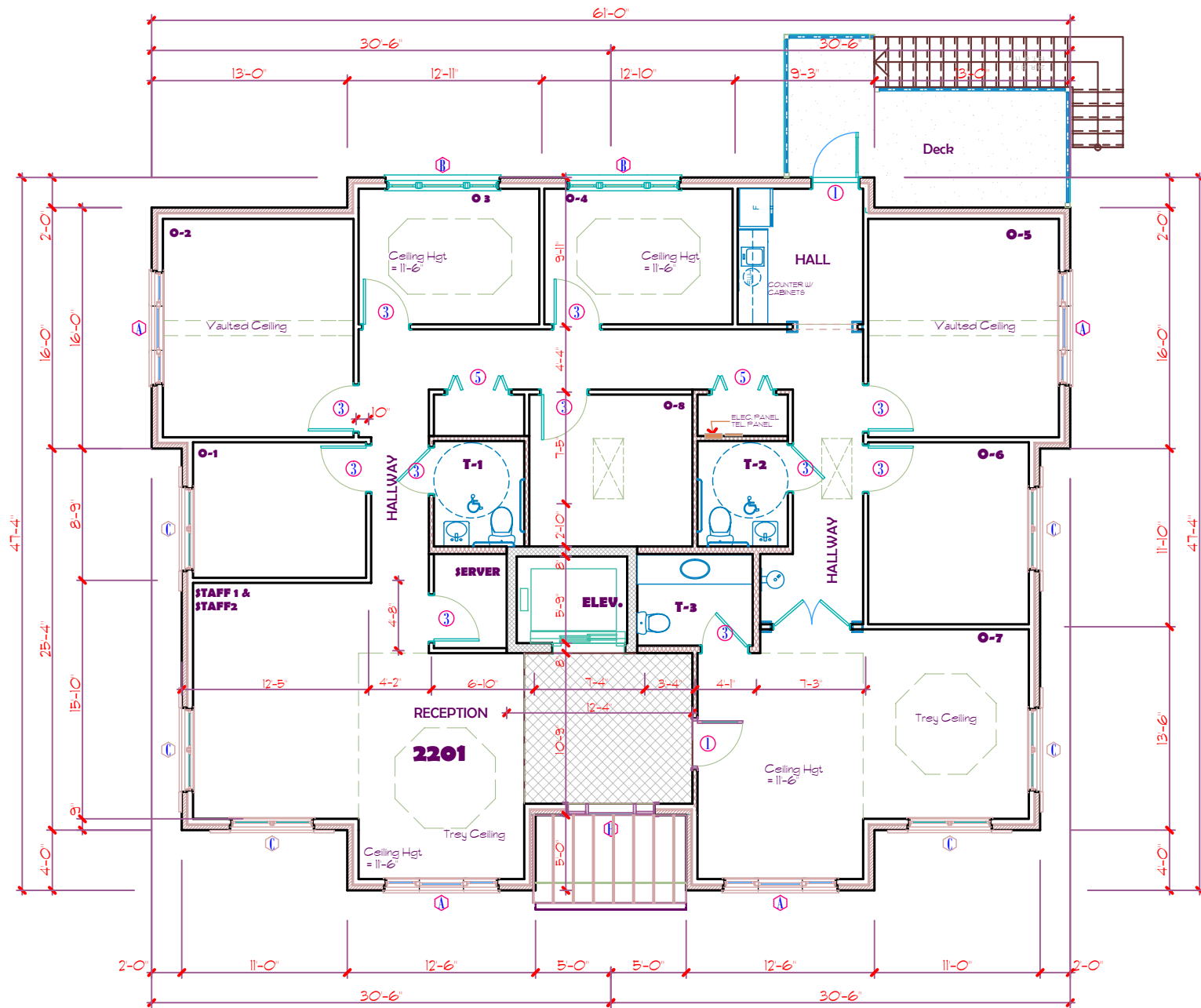
DEVELOPERS:
PARK PROPERTIES GROUP LLC,
3618 Rollins Road, Cumming GA
CONTACT PERSON: CARL SPRADLING
TEL: 770-883-6846

1st FLOOR PLAN

Architect

rjd architect, llc
 233 CANTON STREET
 ALPHARETTA, GA. 30004
 Phone: (770) 751-3393
 Cell: (770) 722-1965 Fax: (678) 393-9341

THIS DRAWING AS AN INSTRUMENT OF SERVICE SHALL REMAIN THE PROPERTY OF RICHARD J. DEBBAN ARCHITECT 233 CANTON STREET ALPHARETTA GEORGIA AND SHALL NOT BE REPRODUCED, PUBLISHED IN WHOLE OR IN PART OR USED IN ANY WAY WITHOUT THE WRITTEN PERMISSION OF RICHARD J. DEBBAN ARCHITECT. COPYRIGHT 2004 #



presentations
10/1/2005 -K3

CASCADE PROFESSIONAL PARK RETAIL/OFFICE CONDOMINIUM

DEVELOPERS:
PARK PROPERTIES GROUP LLC,
3618 Rollins Road, Cumming GA
CONTACT PERSON: CARL SPRADLING
TEL: 770-883-6846

2nd FLOOR PLAN

Architect

rjd architect, llc
 233 CANTON STREET
 ALPHARETTA, GA. 30004
 Phone: (770) 751-3393
 Cell: (770) 722-1965 Fax: (678) 393-9341

THIS DRAWING AS AN INSTRUMENT OF SERVICE SHALL REMAIN THE PROPERTY OF RICHARD J. DEBBAN ARCHITECT 233 CANTON STREET ALPHARETTA GEORGIA AND SHALL NOT BE REPRODUCED, PUBLISHED IN WHOLE OR IN PART OR USED IN ANY WAY WITHOUT THE WRITTEN PERMISSION OF RICHARD J. DEBBAN ARCHITECT. COPYRIGHT 2004 #