



FOR
LEASE

*Multiple office suites now available for lease, ranging
from $\pm 1,452$ to $\pm 3,742$ RSF in San Ramon*

2610 CROW CANYON RD, SAN RAMON, CA 94583

Property highlights

Office and medical uses permitted

Professionally managed and maintained office building

Close proximity to I-680

Walking distance to retail, restaurants and shops

Ample parking on-site

OFFICE AVAILABILITY

SUITE 300 ±2,290 RSF

SUITE 350 ±1,452 RSF

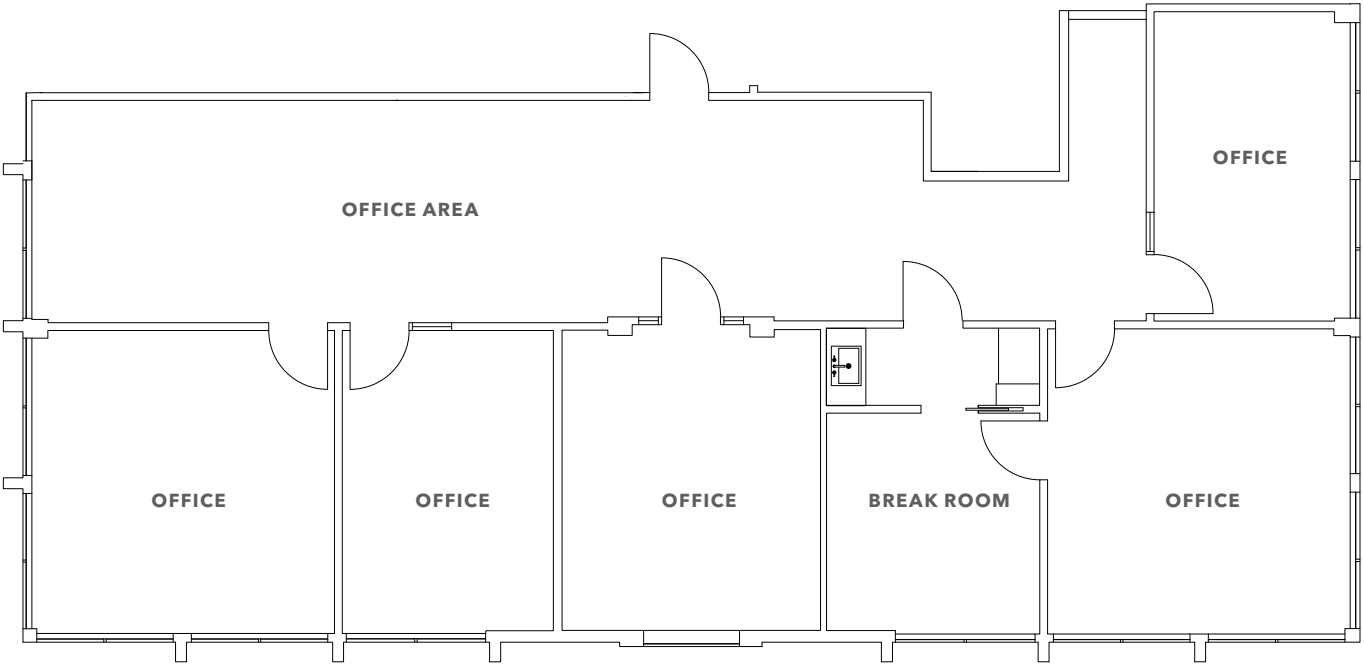
300 & 350 COMBINED ±3,742 RSF



KIDDER.COM

This information supplied herein is from sources we deem reliable. It is provided without any representation, warranty, or guarantee, expressed or implied as to its accuracy. Prospective Buyer or Tenant should conduct an independent investigation and verification of all matters deemed to be material, including, but not limited to, statements of income and expenses. Consult your attorney, accountant, or other professional advisor. All Kidder Mathews designs are the sole property of Kidder Mathews. Branded materials and layouts are not authorized for use by any other firm or person.

SUITE 300



±2,290 RSF

AVAILABLE

CALL

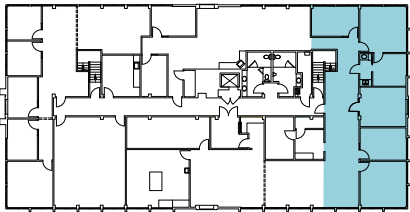
BROKER FOR LEASE RATE

NOW

AVAILABLE

FLOOR PLAN NOT TO SCALE

THIRD FLOOR



KIDDER.COM

This information supplied herein is from sources we deem reliable. It is provided without any representation, warranty, or guarantee, expressed or implied as to its accuracy. Prospective Buyer or Tenant should conduct an independent investigation and verification of all matters deemed to be material, including, but not limited to, statements of income and expenses. Consult your attorney, accountant, or other professional advisor. All Kidder Mathews designs are the sole property of Kidder Mathews. Branded materials and layouts are not authorized for use by any other firm or person.



SUITE 350



FLOOR PLAN NOT TO SCALE

KIDDER.COM

This information supplied herein is from sources we deem reliable. It is provided without any representation, warranty, or guarantee, expressed or implied as to its accuracy. Prospective Buyer or Tenant should conduct an independent investigation and verification of all matters deemed to be material, including, but not limited to, statements of income and expenses. Consult your attorney, accountant, or other professional advisor. All Kidder Mathews designs are the sole property of Kidder Mathews. Branded materials and layouts are not authorized for use by any other firm or person.

±1,452 RSF

AVAILABLE

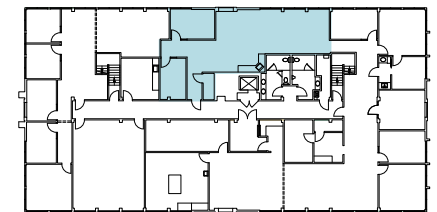
CALL

BROKER FOR LEASE RATE

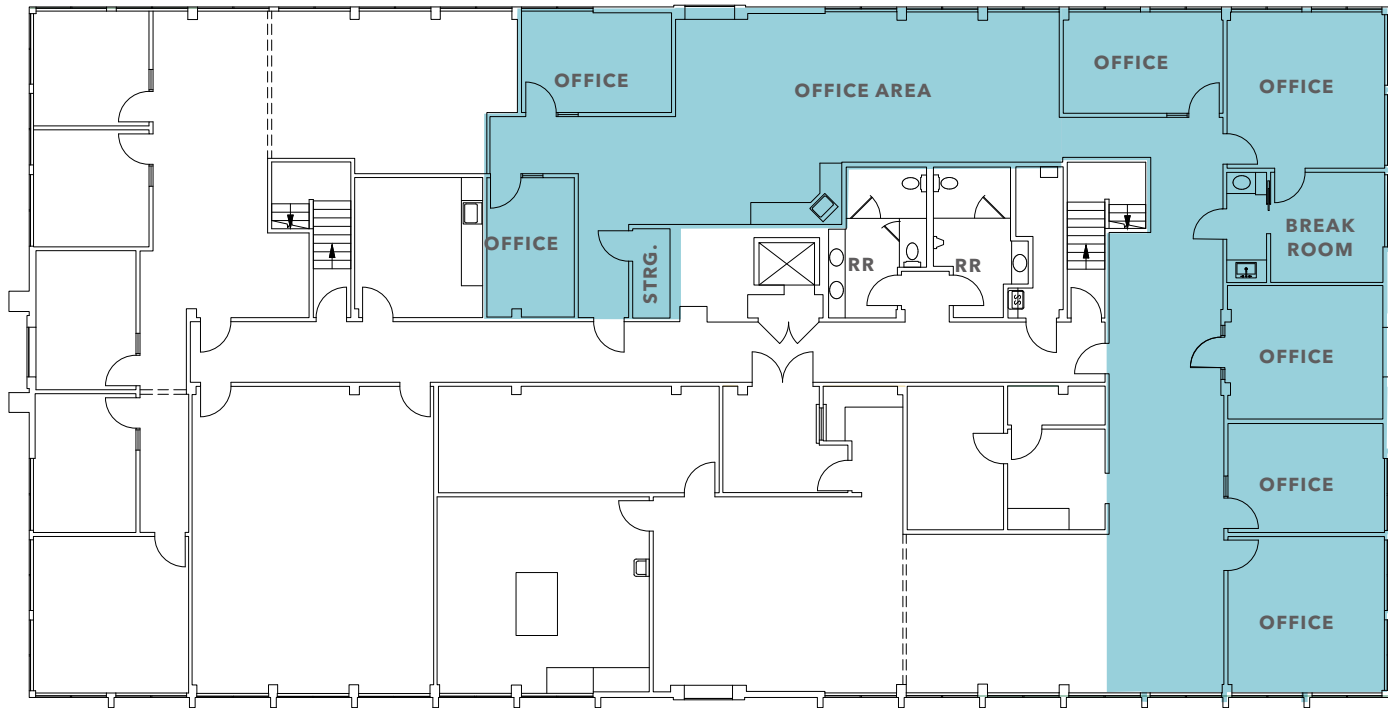
NOW

AVAILABLE

THIRD FLOOR



SUITE 300 & 350 COMBINED



±3,742 RSF

SUITES 300 & 350 COMBINED

CALL

BROKER FOR LEASE RATE

NOW

AVAILABLE

±1,452 RSF to ±3,742 RSF

Open area

Storage room

Break room

Multiple configurations
available

FLOOR PLAN NOT TO SCALE

KIDDER.COM

This information supplied herein is from sources we deem reliable. It is provided without any representation, warranty, or guarantee, expressed or implied as to its accuracy. Prospective Buyer or Tenant should conduct an independent investigation and verification of all matters deemed to be material, including, but not limited to, statements of income and expenses. Consult your attorney, accountant, or other professional advisor. All Kidder Mathews designs are the sole property of Kidder Mathews. Branded materials and layouts are not authorized for use by any other firm or person.





2610 CROW CANYON RD

*For more information on
this property, please contact*

SIMON VOGT, SIOR
925.905.1112
simon.vogt@kidder.com
LIC N° 01879314

KIDDER.COM

This information supplied herein is from sources we deem reliable. It is provided without any representation, warranty, or guarantee, expressed or implied as to its accuracy. Prospective Buyer or Tenant should conduct an independent investigation and verification of all matters deemed to be material, including, but not limited to, statements of income and expenses. Consult your attorney, accountant, or other professional advisor. All Kidder Mathews designs are the sole property of Kidder Mathews. Branded materials and layouts are not authorized for use by any other firm or person.

