

SIGNATURE COLLEGE PARKWAY PROPERTY

9299 College Pkwy | Fort Myers, FL 33919

Commercial Building For Sale



LQ Commercial
REAL ESTATE SERVICES

LQCRE.COM



\$8,900,000
PRICE



39,372 SF
SIZE



C1-A
ZONING



100%
OCCUPIED



1979 / 2005
BUILT / REN

- Existing back center/call center space.
- Includes 1,634 SF retail storefront.
- 4.03 acres fronting College Parkway.
- 543 parking spaces (5.75:1,000 SF)
- Negotiable opportunity for early occupancy or redevelopment, if beneficial.
- Net Operating Income: \$801,422



PROPERTIES.LQCRE.COM/COLLEGE-PKWY-CENTER



TOTAL POPULATION
160,410



AVERAGE HH INCOME
\$112,298



EMPLOYEES
98,366



3555 Kraft Rd #260
Naples, FL 34105
LQCRE.COM

Adam Palmer, CCIM, SIOR
Principal, Managing Director
D: 239.275.4922 x410
C: 239.898.8686
apalmer@lqcre.com

SIGNATURE COLLEGE PARKWAY PROPERTY

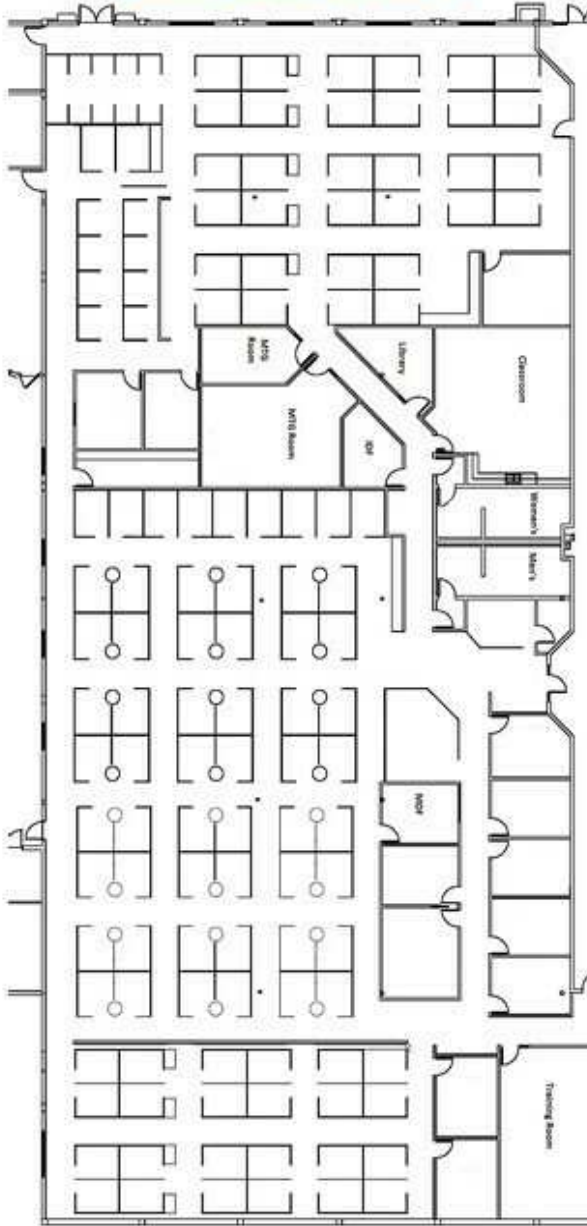
9299 College Pkwy | Fort Myers, FL 33919
Commercial Building For Sale



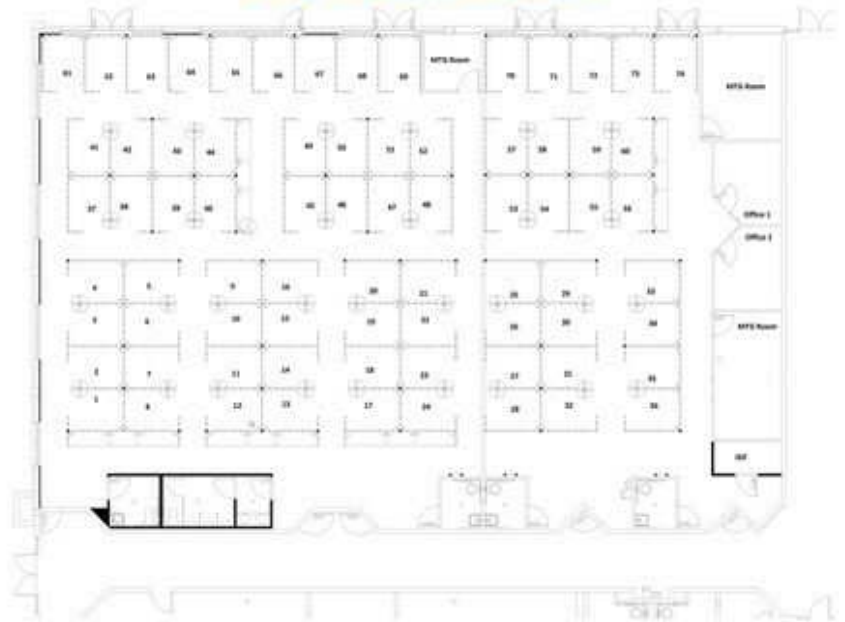
LQ Commercial
REAL ESTATE SERVICES

LQCRE.COM

BACK CENTER SPACE #1



BACK CENTER SPACE #2



BACK CENTER SPACE #3



LQ Commercial
REAL ESTATE SERVICES

3555 Kraft Rd #260
Naples, FL 34105
LQCRE.COM

Adam Palmer, CCIM, SIOR
Principal, Managing Director
D: 239.275.4922 x410
C: 239.898.8686
apalmer@lqcre.com

SIGNATURE COLLEGE PARKWAY PROPERTY

9299 College Pkwy | Fort Myers, FL 33919

Commercial Building For Sale



LQ Commercial
REAL ESTATE SERVICES

LQCRE.COM



LQ Commercial
REAL ESTATE SERVICES

3555 Kraft Rd #260

Naples, FL 34105

LQCRE.COM

Adam Palmer, CCIM, SIOR
Principal, Managing Director
D: 239.275.4922 x410
C: 239.898.8686
apalmer@lqcre.com

Information obtained from owner(s) or other sources deemed reliable. We have no reason to doubt its accuracy, but cannot guarantee it. All properties subject to change or withdrawal without notice.

SIGNATURE COLLEGE PARKWAY PROPERTY

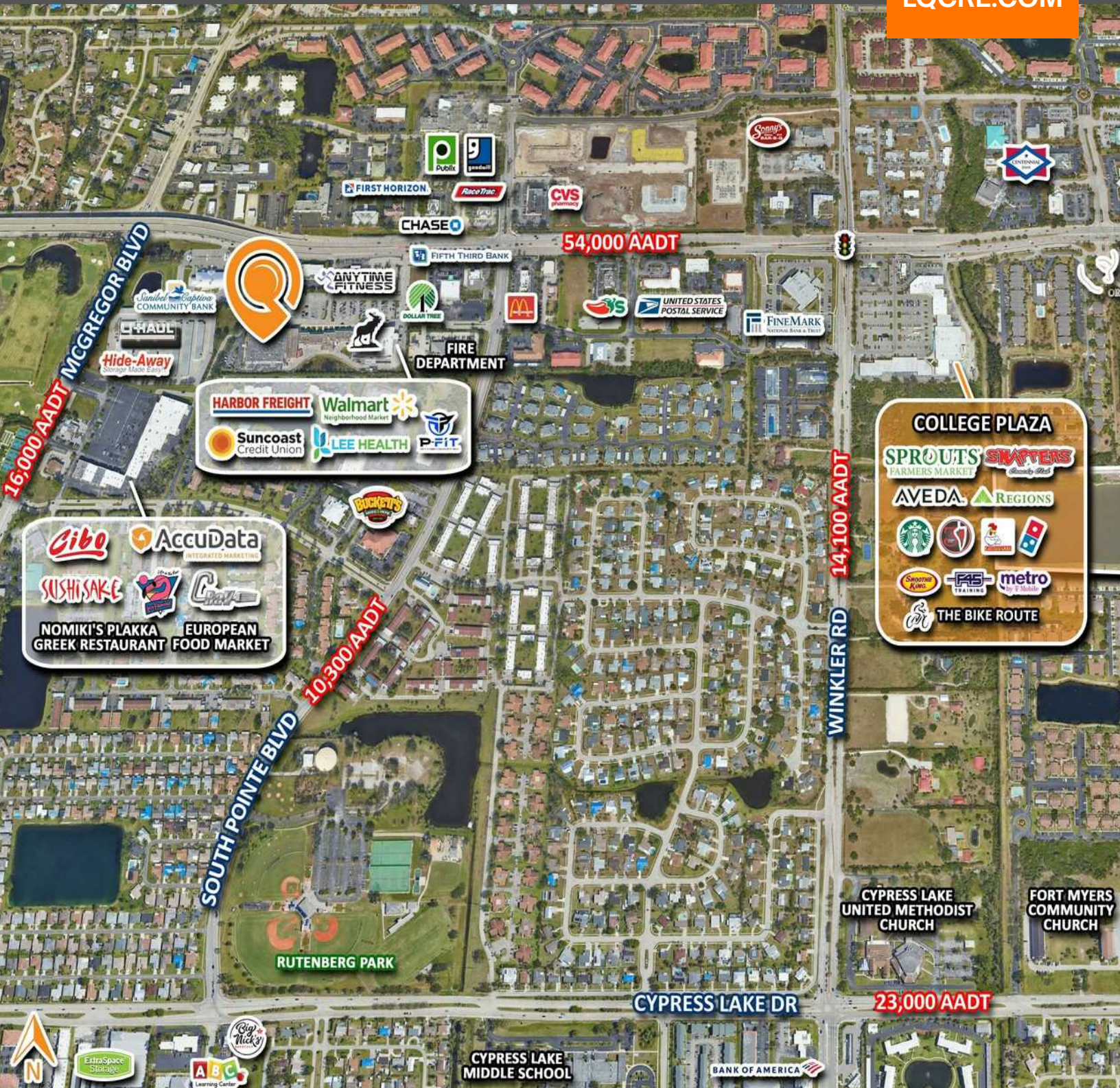
9299 College Pkwy | Fort Myers, FL 33919

Commercial Building For Sale



LQ Commercial
REAL ESTATE SERVICES

LQCRE.COM



LQ Commercial
REAL ESTATE SERVICES

3555 Kraft Rd #260
Naples, FL 34105
LQCRE.COM

Adam Palmer, CCIM, SIOR
Principal, Managing Director
D: 239.275.4922 x410
C: 239.898.8686
apalmer@lqcre.com

Information obtained from owner(s) or other sources deemed reliable. We have no reason to doubt its accuracy, but cannot guarantee it. All properties subject to change or withdrawal without notice.