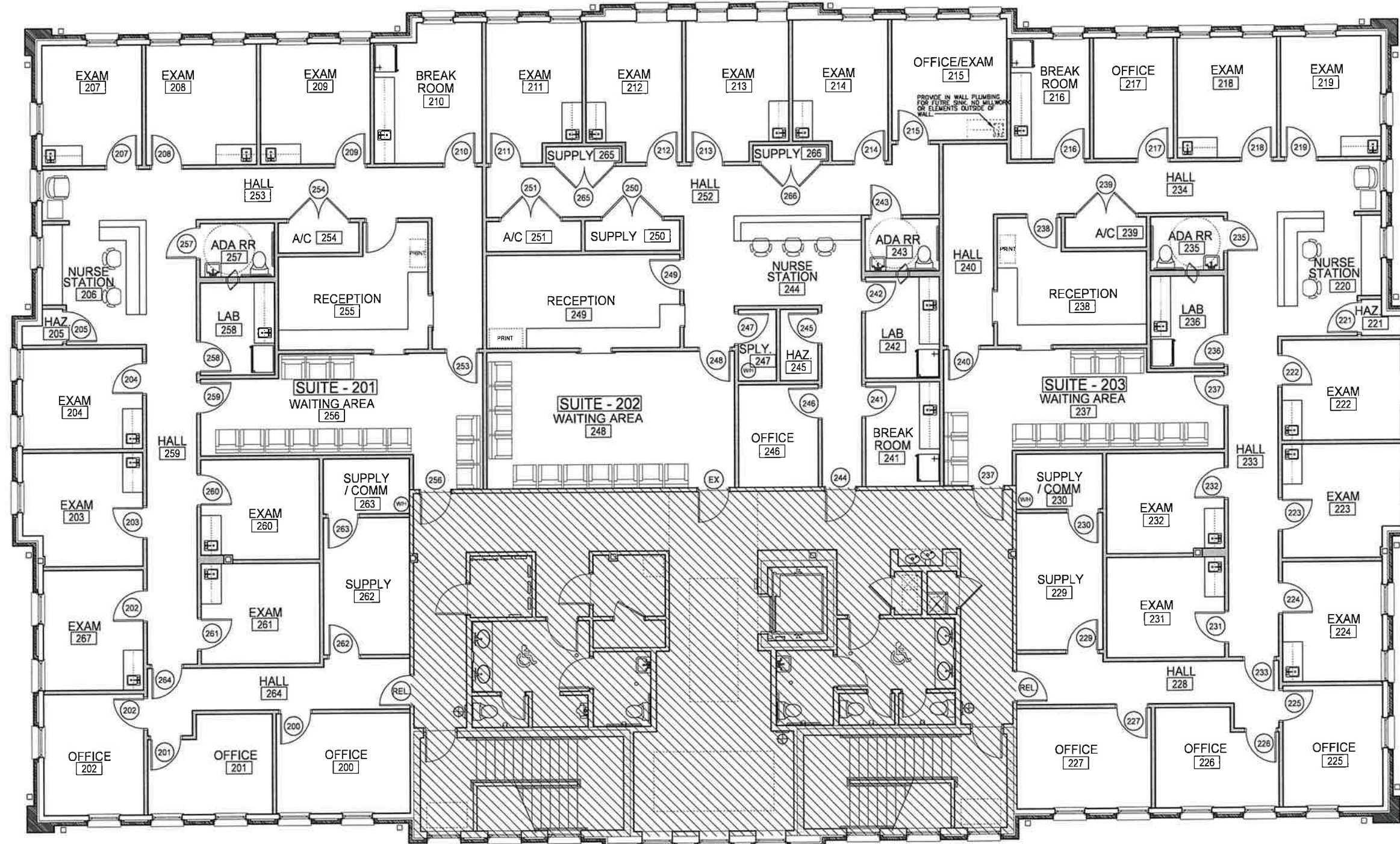


REVIEWED FOR BUILDING CODE COMPLIANCE
DATE: 06/30/2023 BY: B.H. (1312320000)

"Exhibit A"



LABELED FLOOR PLAN

DEMPSEY MAYO OFFICE PARK
BUILDING 300

SC: 3/16" = 1'-0"

A NEW DOCTORS OFFICE SECOND FLOOR - SUITE 201/202/203
DEMPSEY MAYO OFFICE PARK TALLAHASSEE, FLORIDA

LABELED FLOOR PLAN

CONN + ARCHITECTS
1500 C. Edward Boulevard | Tallahassee, Florida 32305 | 850.478.1781
www.connarchitects.com

DATE: JUNE 30, 2023

DRAWN BY: B.H.

REVISED:

ASPECT ARCHITECTS
SUBMITTED IN PART FOR APPROVAL BY
THE FLORIDA ARCHITECTURAL BOARD