

FirstBank DTC

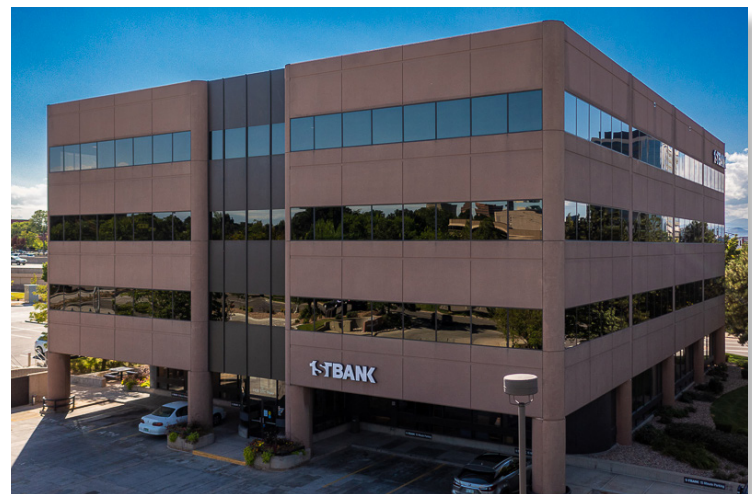
5105 DTC Parkway, Greenwood Village, CO 80111

GREAT LOCATION AT FRONT DOOR TO DTC



PROPERTY HIGHLIGHTS

- Front door to DTC with great visibility and access
- Walkable amenities including Eddie V's Prime Seafood, Shanahan's Steakhouse, Original Pancake House and Starbucks
- 2024 Lobby, elevator and corridor updates
- Easy access to I-25 and I-225
- Surface and covered parking
- Near Belleview Light Rail Station



For leasing information please contact:

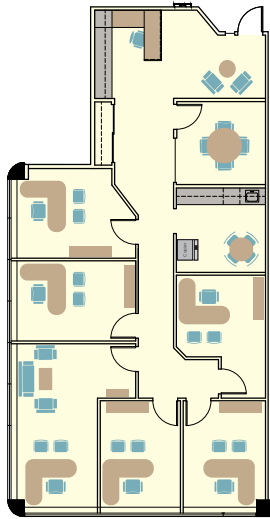
Matt Smith | 303.996.8460
msmith@premisescommercial.com

PREMISES
PREMISES COMMERCIAL REAL ESTATE, LLC
WWW.PREMISESCOMMERCIAL.COM

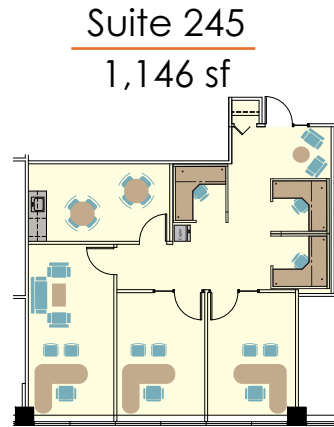
FirstBank DTC

5105 DTC Parkway, Greenwood Village, CO 80111

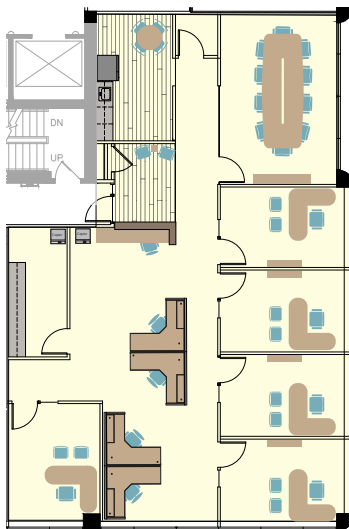
AVAILABLE SUITES



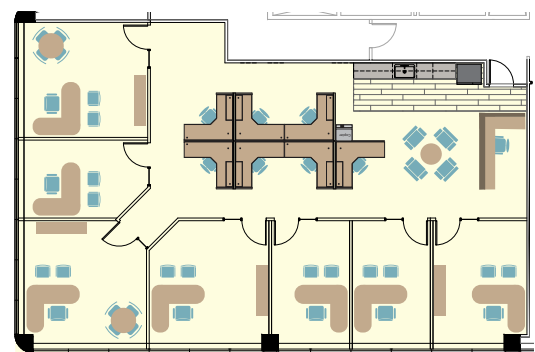
Suite 240
1,961 sf



Suite 245
1,146 sf



Suite 275
2,575 sf



Suite 450
2,703 sf

(Hypothetical)

WWW.PREMISESCOMMERCIAL.COM

The information contained herein, while not guaranteed, has been secured from sources we believe to be reliable. Different brokerage relationships are available which include Seller/Landlord Agency, Buyer/Tenant Agency and Transaction Broker. Premises Commercial Real Estate, LLC is acting in this capacity as Landlord's/Sublessor's Agent, unless otherwise agreed, and owes its fiduciary allegiance to Landlord/Sublessor as defined by Colorado Real Estate Commission.