

301 Mount Elliot St

Detroit, MI



For More Information, Contact:

Dan McCleary

248.770.3969

mccleary@farbman.com

Nathan Casey

586.871.5155

casey@farbman.com

Harrison Yaldoo

313.953.0430

yaldoo@farbman.com



301 MOUNT ELLIOT

DETROIT

NAI Farbman is pleased to offer the former ICE Enforcement Operation Building located at 301 Mount Elliott in Detroit's Rivertown neighborhood. The original structure was built in 1933. The portfolio features over 43,000 SF and 3.18 Acres of the total land. The Property enjoys excellent visibility on E Jefferson an abundance of parking. The location is primed for multiple businesses and has excellent access to I-75 and Belle Isle.

Property Information

Front Building

- 15,000 SF
- 3 Stories
- Elevator
- Kitchenette

Back Office Building

- 18,000 SF
- 2 Stories
- Beautifully Finished Office Space with Flexible Floor Plans

Parking Garage/Storage Warehouse

- Approx. 10,000 SF
- Very Clean Open Floor Plan
- 2 Over Head Doors

Boiler Room

- Approximately 2,000 SF
- 2 Fully Operational Boilers
- Small Mechanic Shop/Office

Fully Fenced Parking Lot

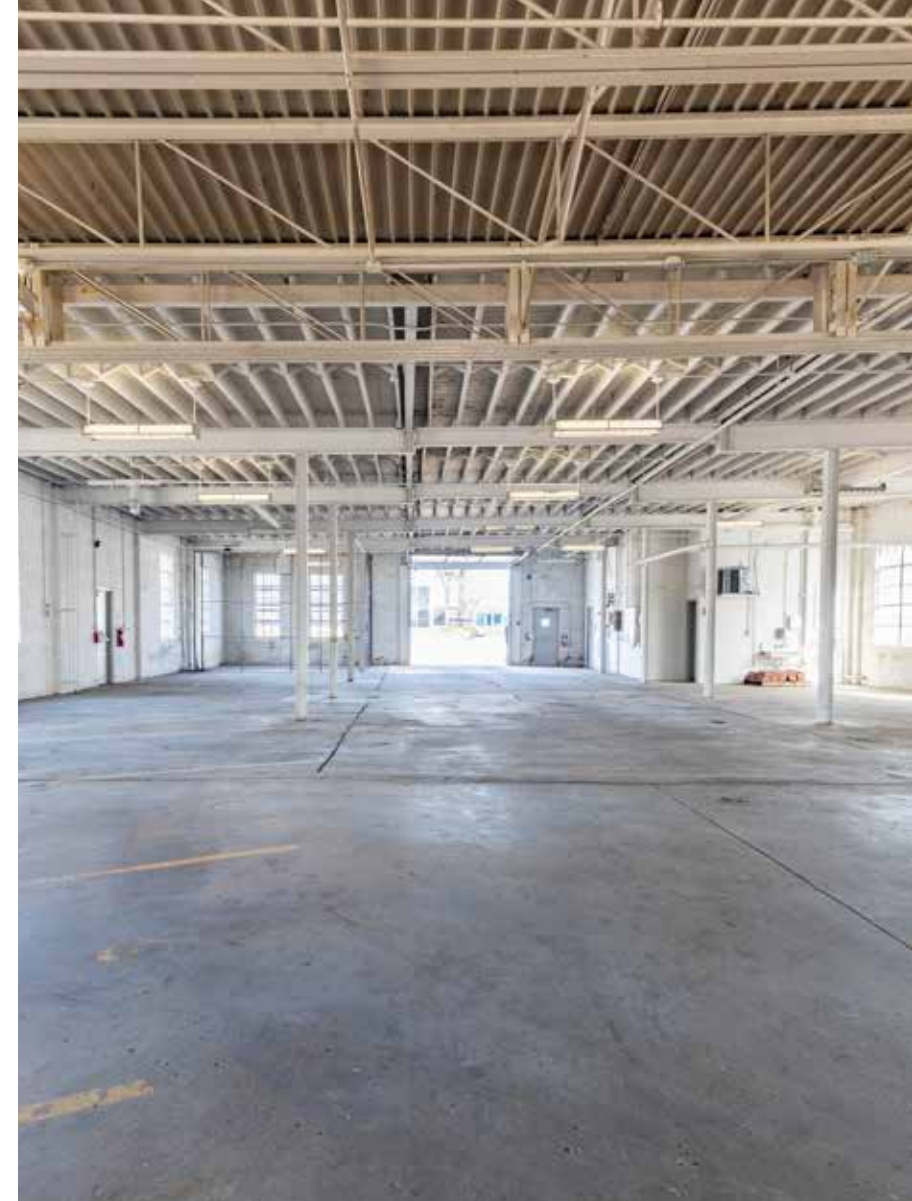
- 80,000 SF of Private Parking



**HISTORIC
FRONT
BUILDING**



**BACK
BUILDING**



GARAGE



BOILER





For More Information, Contact:

Dan McCleary

248.770.3969

mccleary@farbman.com

Nathan Casey

586.871.5155

casey@farbman.com

Harrison Yaldoo

313.953.0430

yaldoo@farbman.com

NAI Farbman | **Farbman Group**
Commercial Real Estate Services, Worldwide.
MIDWEST EXPERTISE, GLOBAL REACH.