

±20,688 SF FOR SALE

5300 ELM ST | HOUSTON TX, 77081



David Buescher
+1 713 888 4016
david.buescher@jll.com

Geoff Perrott
+1 713 888 4072
geoff.perrott@jll.com





ELM ST

ROYALTOWN ST

5300 ELM STREET

BUILDING BREAKDOWN

3 Buildings: ±20,688 SF on 1.646 AC

100% Climate Controlled

12' – 16' Eave Height

Five (5) Overhead Doors

Heavy Power

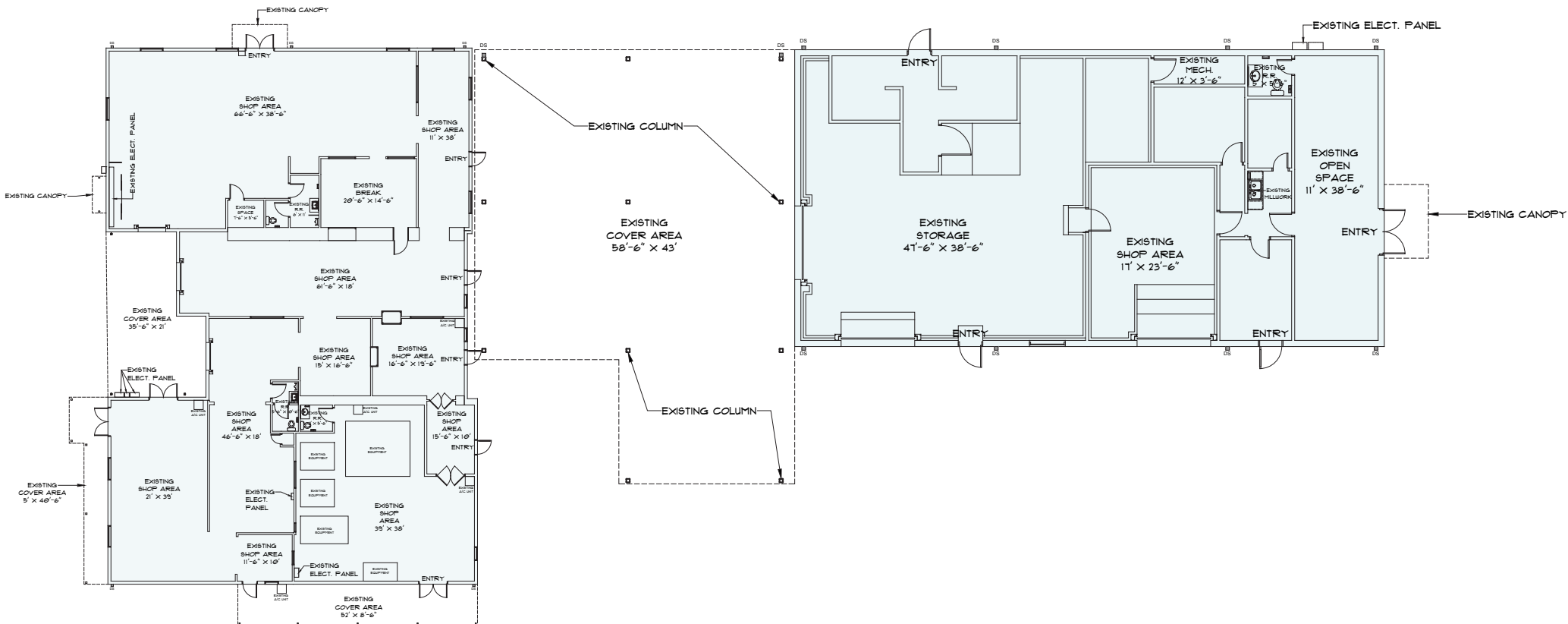
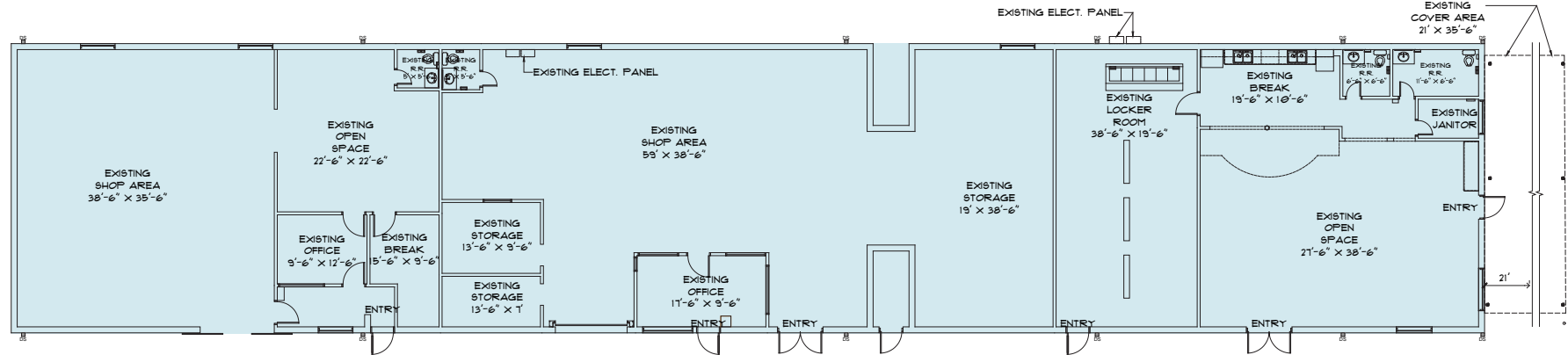
Concrete outside storage

Fully fenced and gated

Multiple ingress/egress access points

5300 ELM STREET

±20,688 SF Total (3 Bldgs.)





DRIVE TIMES

2 MINS.

I-610
±0.8 MILES

2 MINS.

WESTPARK TOLLWAY
±0.9 MILES

3 MINS.

I-69 / HWY 59
±0.9 MILES

5 MINS.

GALLERIA / UPTOWN
±2.5 MILES

10 MINS.

DOWNTOWN HOUSTON
±9.5 MILES

10 MINS.

I-10
±5.5 MILES

25 MINS.

HOBBY AIRPORT
±17.3 MILES

30 MINS.

IAH AIRPORT
±28.3 MILES

**David
Buescher**

+1 713 888 4016
david.buescher@jll.com

**Geoff
Perrott**

+1 713 888 4072
geoff.perrott@jll.com

Although information has been obtained from sources deemed reliable, JLL does not make any guarantees, warranties or representations, express or implied, as to the completeness or accuracy as to the information contained herein. Any projections, opinions, assumptions or estimates used are for example only. There may be differences between projected and actual results, and those differences may be material. JLL does not accept any liability for any loss or damage suffered by any party resulting from reliance on this information. If the recipient of this information has signed a confidentiality agreement with JLL regarding this matter, this information is subject to the terms of that agreement. ©2024 Jones Lang LaSalle Brokerage, Inc. All rights reserved.

