

# 653

N TOWN CENTER DR  
LAS VEGAS, NV 89144

## SUMMERLIN MEDICAL OFFICE I FOR LEASE

SUITES RANGING FROM  
**736 - 3,882 SF**



HEALTHCARE

**JAMIE KRAHNE**  
SENIOR VICE PRESIDENT  
702.216.2363 **CELL**  
jamiiek@dcghealthcare.com  
B.143850/PM.164496

**MIKE TYMCZYN**  
VICE PRESIDENT  
702.216.2371 **DIRECT**  
mtymczyn@dcghealthcare.com  
S.177844

## PROPERTY HIGHLIGHTS

- On the campus of Summerlin Hospital Medical Center
- Professional property management
- Generous tenant improvement allowances
- Current specialties include: **Primary Care - Cardiology - Urology  
Oncology - Orthopedics - Family Dentistry - Endocrinology  
Neurological Surgery - Plastic Surgery**

AREA MAP



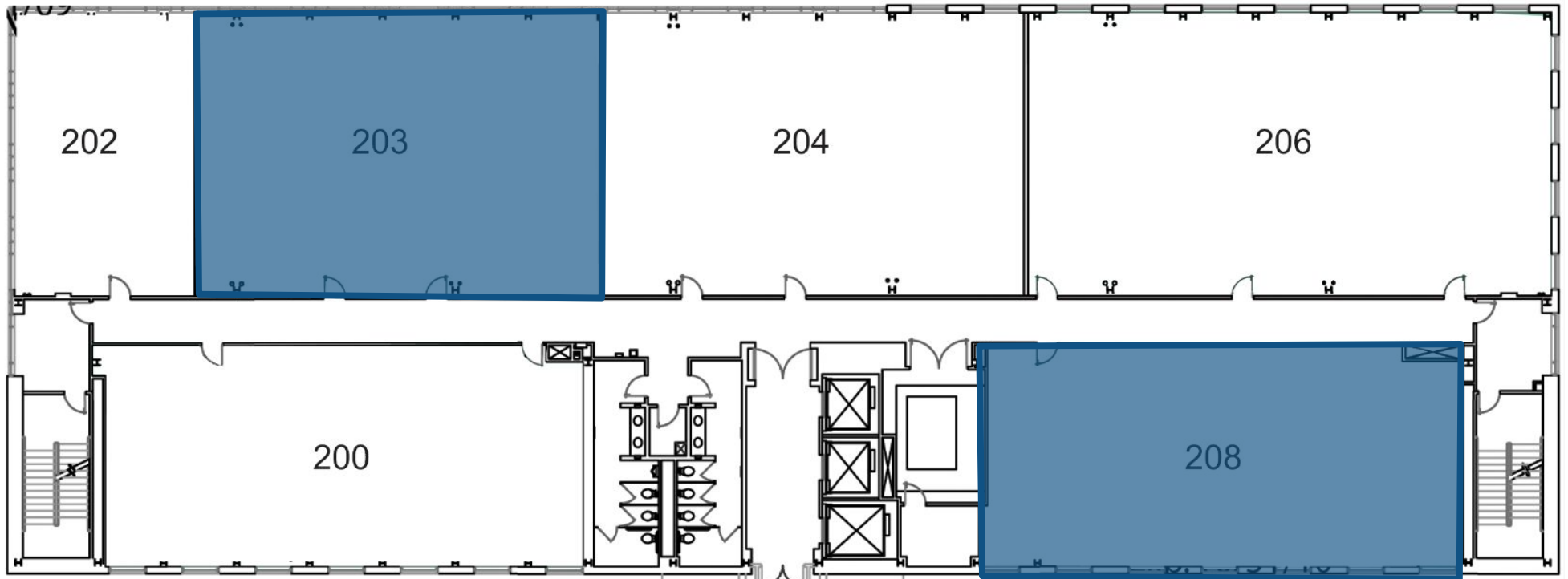
SUMMERLIN MEDICAL OFFICE I



## SECOND FLOOR

## AVAILABLE SUITES

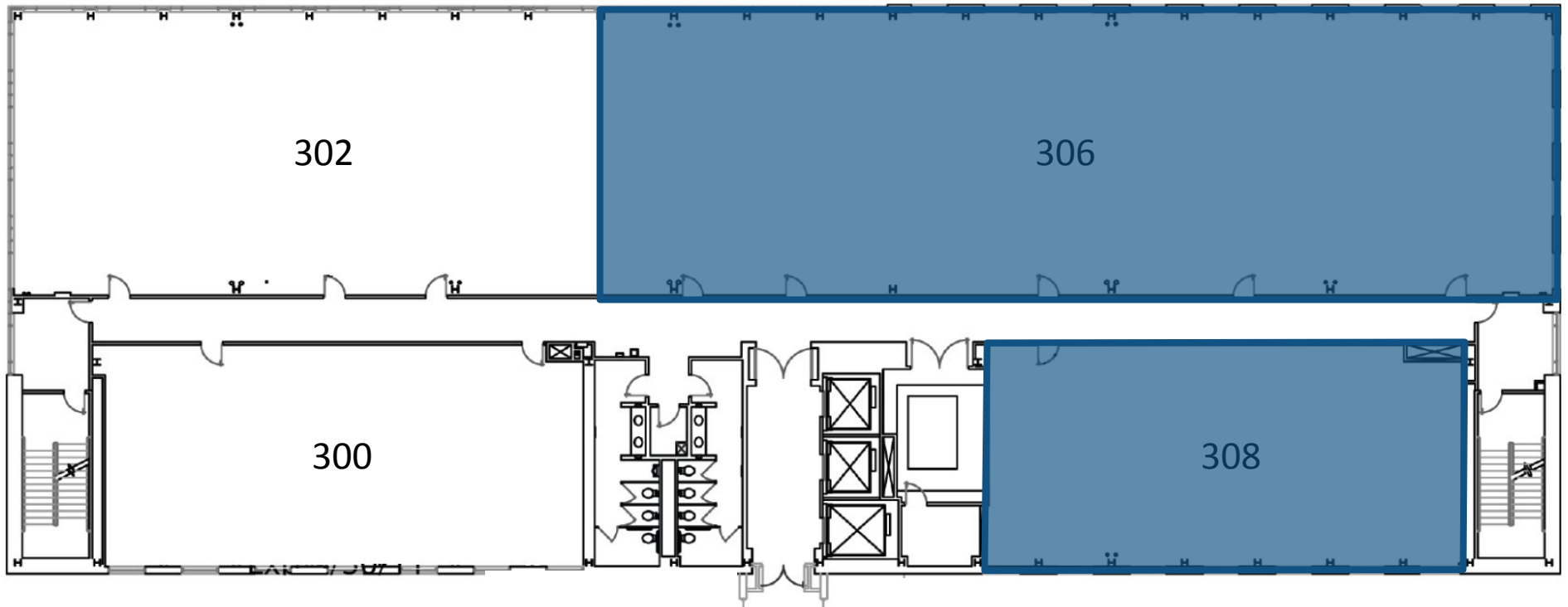
SUITE 203	749 SF
SUITE 208	2,356 SF



# THIRD FLOOR

## AVAILABLE SUITES

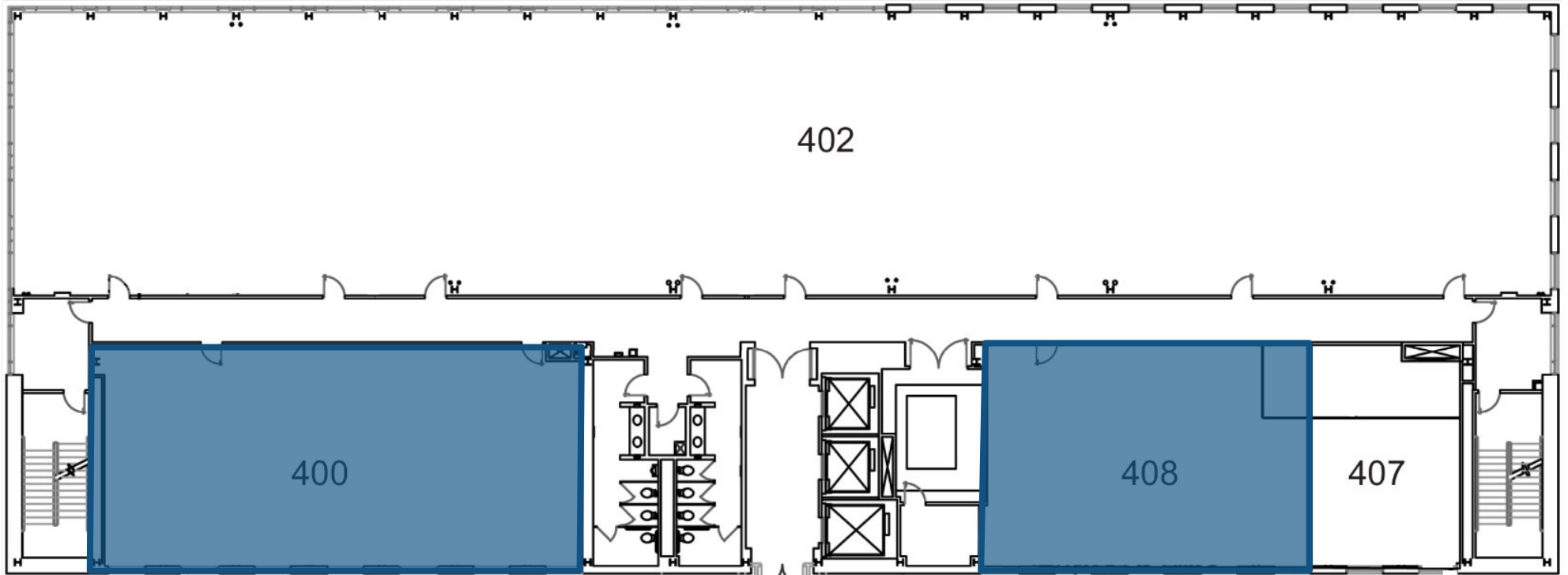
SUITE 308	2,356 SF
SUITE 306	5,930 SF



# FOURTH FLOOR

## AVAILABLE SUITES

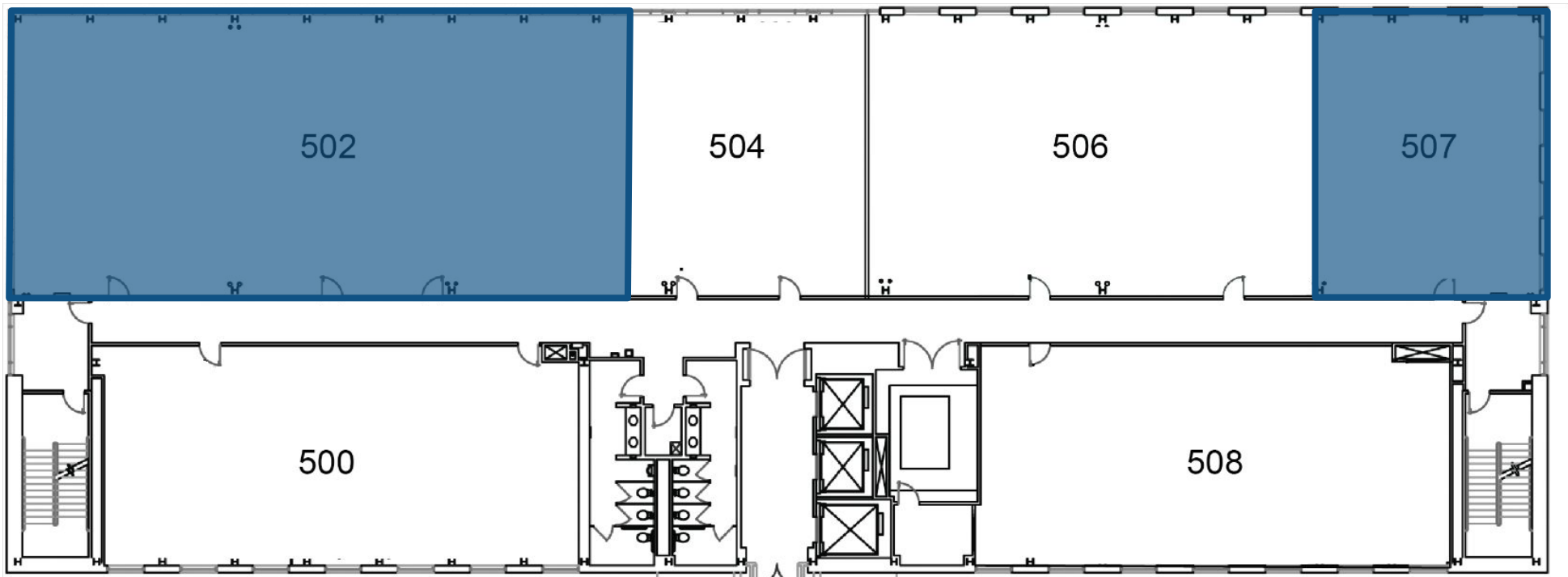
SUITE 400	2,390 SF
SUITE 408	1,380 SF



# FIFTH FLOOR

## AVAILABLE SUITES

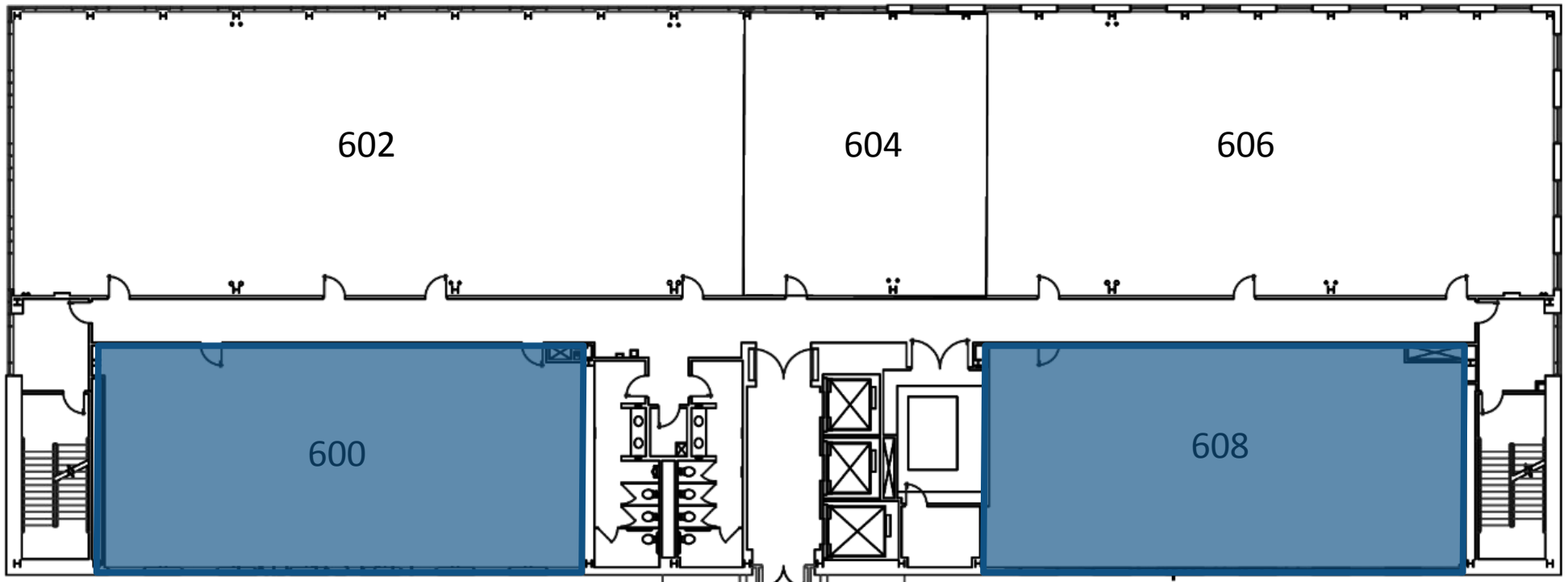
SUITE 502	3,882 SF
SUITE 507	2,024 SF



# SIXTH FLOOR

## AVAILABLE SUITES

SUITE 600	2,390 SF
SUITE 608	2,356 SF





## HOSPITAL SERVICES



### **Cardiovascular**

- Chest Pain Center
- Angioplasty
- Cardiac catheterization
- Pacemaker/defibrillator implants
- Bi-ventricular implants
- Peripheral vascular interventions
- Cardiovascular surgery
- Intravascular Ultrasound

### **Diabetes Treatment Center**

- Inpatient care

### **Dialysis**

- Inpatient care

### **Emergency Services**

- Urgent and emergency care 24/7
- Pediatric ER
- Advanced primary stroke center

### **Endoscopic Procedures**

### **Laboratory Services**

### **Maternity Services**

- Triage
- Antepartum
- Labor and Delivery
- Postpartum
- Level I-II-III Neonatal ICU

### **Orthopedics**

### **Radiology**

- Angiography
- CT scan
- MRI
- Nuclear Medicine
- X-ray
- Digital Mammography

### **Rehabilitation**

- Inpatient Physical Therapy
- Speech Therapy
- Occupational Therapy
- Short-term inpatient rehabilitation unit

### **Surgery**

- Inpatient
- Outpatient
- Robotic

### **Wound Care**

- Inpatient care
- Outpatient care
- Hyperbaric medicine