

# 2535

WALNUT



Modernized, historic office  
in the heart of RiNo





# 2535 Walnut Gateway to RiNo

- › Award-winning historic creative office space
- › 31 dedicated parking spaces available
- › Ideally positioned at the gateway to RiNo
- › \$2 million renovation completed in 2015
- › Minimalist concrete construction
- › High ceilings with exposed ductwork & skylights, large windows, and a solarium

## Details

Address	2535 Walnut Street Denver CO 80205
Building Size	24,350 SF
Availability	1,105 SF - 3,558 SF
Year Built	1957
Renovated	2015
Parking	31 On-Site Spaces



Virtual Tour



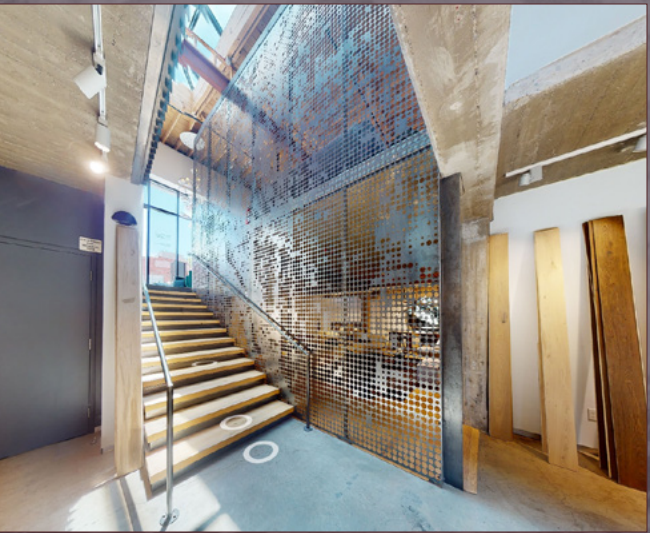
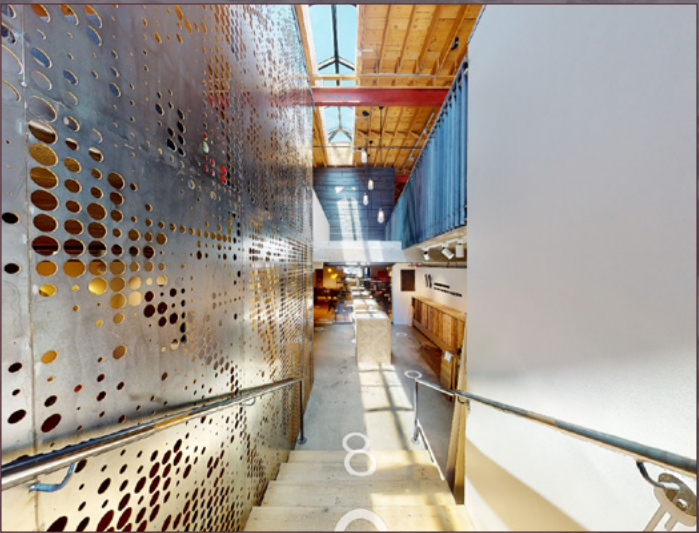
AVAILABLE



OCCUPIED











2535  
WALNUT

Proposed  
Mixed-Use  
100K SF

WALK SCORE®  
**98**  
WALKER'S  
PARADISE

TRANSIT SCORE®  
**67**  
GOOD  
TRANSIT

BIKE SCORE®  
**99**  
BIKER'S  
PARADISE



# 2535

## WALNUT



For more information please contact:

**James Roupp** | +1 303 217 7947 | [james.roupp@jll.com](mailto:james.roupp@jll.com) **Bo Pitto** | +1 303 260 6529 | [bo.pitto@jll.com](mailto:bo.pitto@jll.com)



Jones Lang LaSalle Americas, Inc.  
©2023 Jones Lang LaSalle LP, Inc. All rights reserved. All information contained herein is from  
sources deemed reliable; however, no representation or warranty is made to the accuracy thereof.